

Material Calculations (West Elevation Line-up)

Facade	Stone or Brick	Architectural Panels	Texture Coated Concrete	Stucco	E.I.F.S.	Accent Materials	Total
West	4660 sf, 23.5%	2,388 SF, 12%	6,873 SF, 34.7%	4,900 SF, 24.7%	553 SF, 2.8%	102 SF, 0.5%	19,000 SF, 100%

Facade Calculations

Facade	Face or mostly parallel to street	Area of Facade	Area of Windows	Percentage of Facade	Required	Meets
West (Kohl's only)	Yes	8,650 SF	726 SF	8.4%	15%	No
North	No	5,107 SF	52 SF	1%	Not required	N.A.
Total	Yes (WEST ELEVATION LINEUP)	23,643 SF	3,817 SF	16.1%	15%	Yes

Material Calculations (Kohl's Only)

Facade	Stone & Brick	Architectural Panels	Textured Coating on Concrete	Stucco	E.I.F.S.	Accent Materials	Total
West (Kohl's only)	2,234 sf 28.2%	1,022 sf., 12.9%	2,828 sf., 35.7%	1,521 sf., 19.2%	113 sf., 1.4%	206 sf., 2.6%	7,924 sf 100%
North (Kohl's only)	812 sf., 16%	46 sf., 1%	3,950 sf., 78.1%	128 sf., 2.5%	13 sf., 0.3%	106 sf., 2.1%	100%

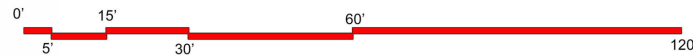
Building Design Menu Items	Legend
Material Mix	01
Color Contrast	02
Corner Treatment	03
Articulated Public Entrance	04
Buildings at Intersections	05
Roof Profile Variation	06
Canopy Variation	07
Design Elements	08

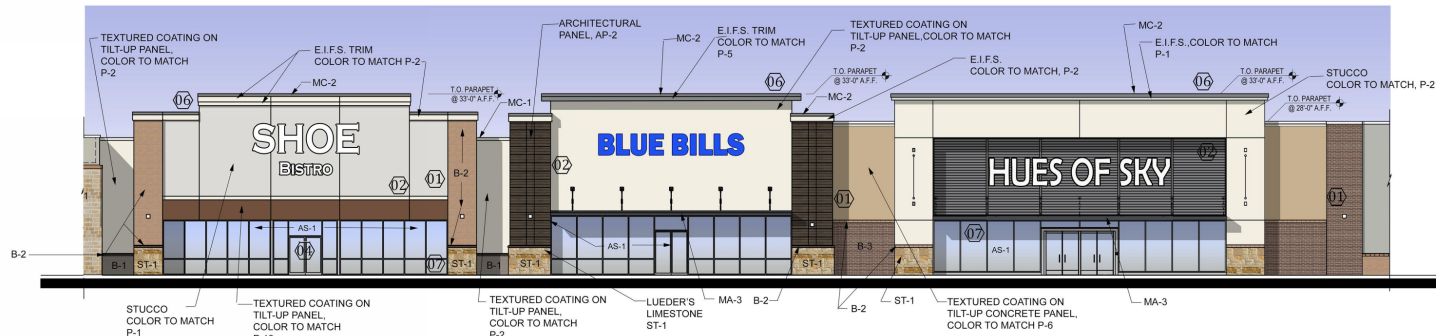
<b>BRICK</b>	Acme Brick	Marble Gray Smooth (King Size)
B-1	Acme Brick	Cinnamon Brown (King Size)
B-2	Acme Brick	Brookshire (King Size)
<b>STONE</b>		
ST-1	Lueder's Limestone	Color: Buff Type: Random Chopped 100% Roughback
ST-2	Lueder's Limestone	Color: Buff Type: Sawn 6 Sides.
<b>PAINT / TEXTURE COAT / E.I.F.S. / STUCCO</b>		
P-1	Sherwin Williams	SW7657 Tinsmith
P-2	Sherwin Williams	SW7666 Fleur de Sel
P-3	Sherwin Williams	SW7658 Gray Clouds
P-4	Sherwin Williams	SW7650 Ellie Gray
P-5	Sherwin Williams	SW9163 Tin Lizzie
P-6	Sherwin Williams	SW7536 Bittersweet Stem
P-7	Sherwin Williams	SW9108 Double Latte
P-8	Sherwin Williams	SW7031 Mega Greige
P-9	Sherwin Williams	SW9168 Elephant Ear
P-10	Sherwin Williams	SW7025 Backdrop
P-11	Sherwin Williams	SW7019 Gauntlet Gray
P-12	Sherwin Williams	SW7026 Griffin
P-13	Sherwin Williams	SW9052 Iced Mocha
P-14	Sherwin Williams	SW7705 Wheat Penny
P-15	Sherwin Williams	SW2808 Rookwood Dark Brown
<b>METAL COPING / METAL ROOFING</b>		
MC-1	Berridge Manufacturing	Shasta White
MC-2	Berridge Manufacturing	Berridge Manufacturing Zinc Grey
<b>METAL AWNING</b>		
MA-1	Berridge Manufacturing	Burgundy
MA-2	Berridge Manufacturing	Terra-Cotta
MA-3	Berridge Manufacturing	Bark
MA-4	Berridge Manufacturing	Shasta White
<b>ALUMINUM STOREFRONT</b>		
AS-1	Kawneer	Clear Anodized
<b>ARCHITECTURAL PANELS</b>		
AP-1	Nichia Vintagewood	Redwood
AP-2	Nichia Vintagewood	Bark
AP-3	Nichia Vintagewood	Ash

Materials and colors subject to change based on availability. Substituted color to remain in a similar color palette.

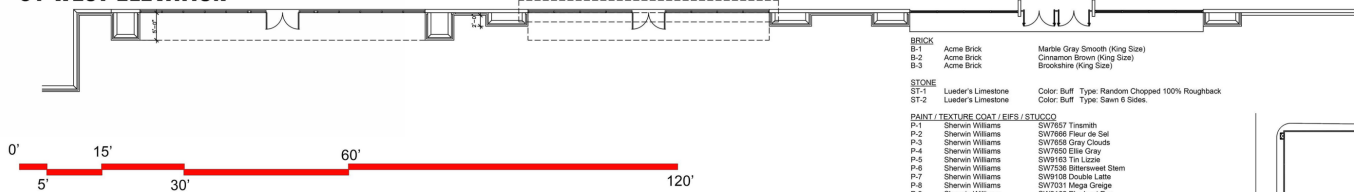
02 NORTH ELEVATION

PLAN PROFILE

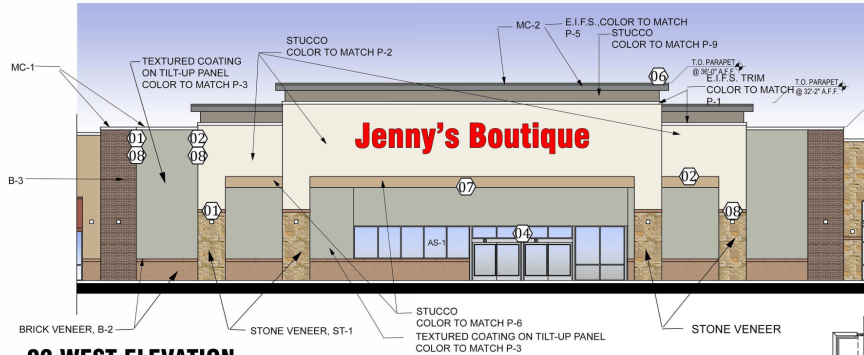




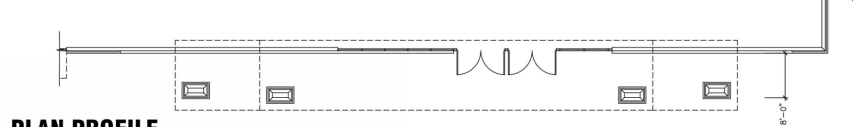
## 01 WEST ELEVATION



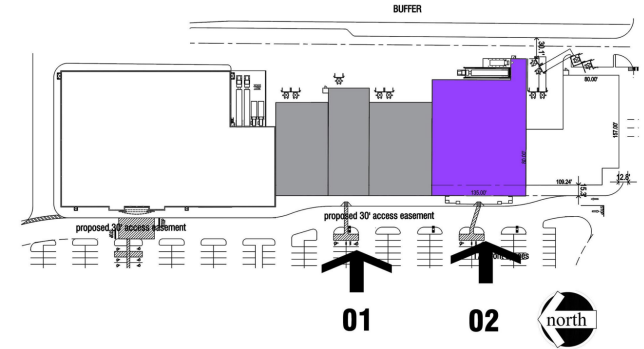
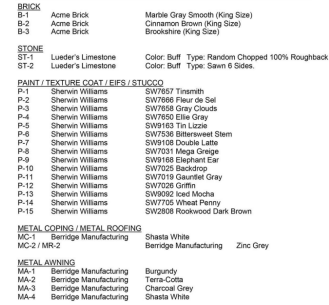
## PLAN PROFILE



## 02 WEST ELEVATION



## PLAN PROFILE



NOTE: ALL AWNINGS ARE AT 6' IN DEPTH

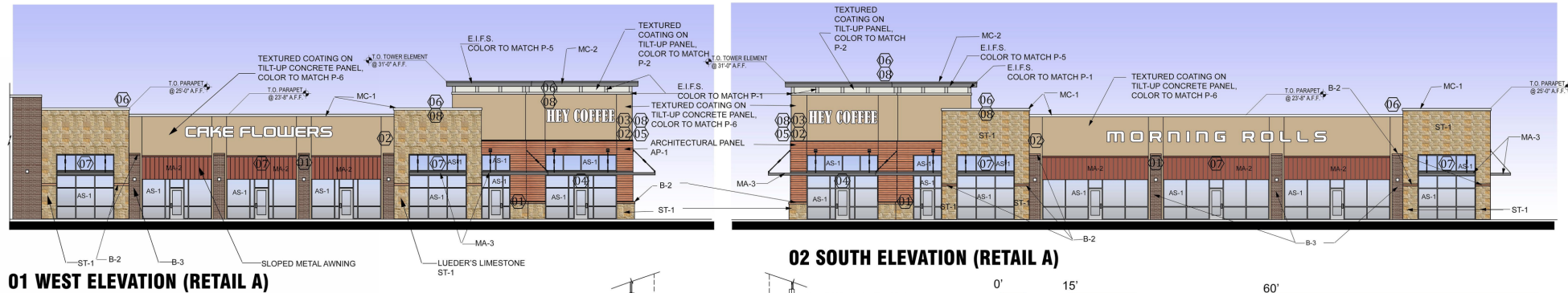
### Material Calculations (West Elevation Line-up)

Facade	Stone or Brick	Architectural Panels	Texture Coated Concrete	Stucco	EIFS	Accent Materials	Total
West	4,660 sf, 23.5%	2,388 SF, 12%	6,873 SF, 34.7%	4,900 SF, 24.7%	553 SF, 2.8%	452 SF, 2.3%	19,826SF, 100%

### Facade Calculations (West Elevation Line-up)

Facade	Face or mostly parallel to street	Area of Facade	Area of Windows	Percentage of Facade	Required	Meets
West	Yes	23,643 SF	3,817 SF	16.1%	15%	Yes
Total		23,643 SF	3,817 SF	16.1%	15%	Yes

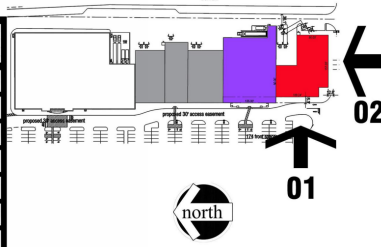




PLAN PROFILE

PLAN PROFILE

Building Design Menu Items	Legend
Material Mix	01
Color Contrast	02
Corner Treatment	03
Articulated Public Entrance	04
Buildings at Intersections	05
Roof Profile Variation	06
Canopy Variation	07
Design Elements	08



BRICK	Acme Brick	Marble Gray Smooth (King Size)
B-1	Acme Brick	Cinnamon Brown (King Size)
B-2	Acme Brick	Brookshire (King Size)
B-3	Acme Brick	
STONE	Lueder's Limestone	Color: Buff Type: Random Chopped 100% Roughback
ST-1	Lueder's Limestone	Color: Buff Type: Sawn 8 Sides
P-1	Sherwin Williams	SW7657 Tinsmith
P-2	Sherwin Williams	SW7666 Fleur de Sel
P-3	Sherwin Williams	SW7658 Gray Clouds
P-4	Sherwin Williams	SW7650 Ellie Gray
P-5	Sherwin Williams	SW9163 Tin Lizzie
P-6	Sherwin Williams	SW7536 Buttercream Stem
P-7	Sherwin Williams	SW9108 Double Latte
P-8	Sherwin Williams	SW7031 Mega Greige
P-9	Sherwin Williams	SW9168 Elephant Ear
P-10	Sherwin Williams	SW7025 Backdrop
P-11	Sherwin Williams	SW7019 Gauntlet Gray
P-12	Sherwin Williams	SW7026 Griffin
P-13	Sherwin Williams	SW9092 Iced Mocha
P-14	Sherwin Williams	SW7702 Wheat Penny
P-15	Sherwin Williams	SW2808 Rookwood Dark Brown
METAL COPING / METAL ROOFING	Shasta White	
MC-1	Berridge Manufacturing	Zinc Grey
MC-2	Berridge Manufacturing	
METAL AWNING	Burgundy	
MA-1	Berridge Manufacturing	Terra-Cotta
MA-2	Berridge Manufacturing	Charcoal Grey
MA-3	Berridge Manufacturing	Shasta White
ALUMINUM STOREFRONT	Clear Anodized	
AS-1	Kavner	
ARCHITECTURAL PANELS	Redwood	
AP-1	Nichia Vintagewood	Bark
AP-2	Nichia Vintagewood	Ash
AP-3	Nichia Vintagewood	

Material Calculations (Retail A-South)

Facade	Stone or Brick	Architctural Panels	Texture Coated Concrete	Stucco	EIFS	Accent Materials	Total
South	780 sf., 29%	230sf., 8.5%	1,541 SF, 57.3%	0	64 SF 2.4%	76 SF 2.8%	2,691 sf 100%

Facade Calculations (Retail A-South)

Facade	Face or mostly parallel to street	Area of Facade	Area of Windows	Percentage of Facade	Required	Meets
South	Yes	4,075 SF	1,384 sf	34%	15%	Yes
Total		4,075 SF	1,384SF	34%	15%	Yes

Facade Calculations (West Elevation Line-up)

Facade	Face or mostly parallel to street	Area of Facade	Area of Windows	Percentage of Facade	Required	Meets
West	Yes	23,643 SF	3,817 SF	16.1%	15%	Yes
Total		23,643 SF	3,817 SF	16.1%	15%	Yes

Material Calculations (West Elevation Line-up)

Facade	Stone or Brick	Architctural Panels	Texture Coated Concrete	Stucco	EIFS	Accent Materials	Total
West	4660 sf, 23.5%	2,388 SF, 12%	6,873 SF, 34.7%	4,900 SF, 24.7%	553 SF 2.8%	452 SF 2.3%	19,826SF 100%



# EPIC EAST TOWNE CROSSING

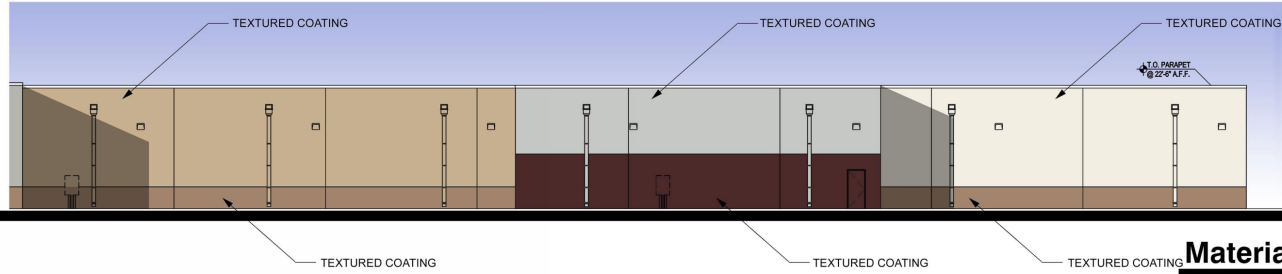
NOTE: ALL AWNINGS ARE AT 6' IN DEPTH



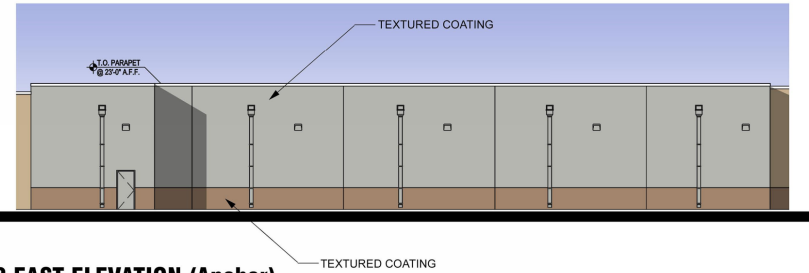
S191001

14043-01, SP-52, 09-20-2019, Sheet-3

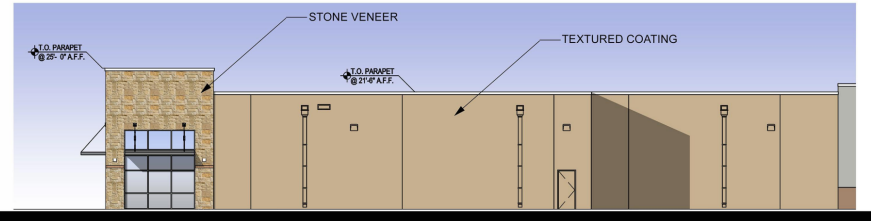




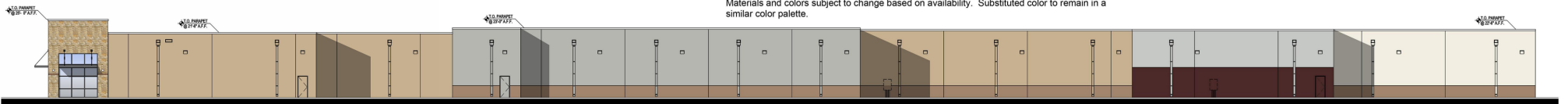
### 01 EAST ELEVATION (Junior Anchors-22'-6" Option))



### 02 EAST ELEVATION (Anchor)

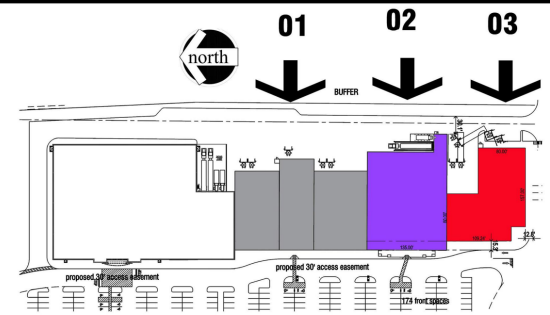


### 03 EAST ELEVATION (Retail A)



## Material Calculations

Facade	Stone or Brick	Architectural Panels	Texture Coated Concrete	Stucco	EIFS	Accent Materials	Total
East	3%	0%	95%	0%	0%	2%	100%

BRICK  
D.4

B-1	Acme Brick
B-2	Acme Brick
B-3	Acme Brick

Marble Gray Smooth (King Size)  
Cinnamon Brown (King Size)  
Brookshire (King Size)

STONE  
ET. 1

ST-1	Lueder's Limestone
ST-2	Lueder's Limestone

Color: Buff Type: Random Chopped 100% Roughback  
Color: Buff Type: Sawn 6 Sides.

PAINT / TEXTURE COAT / EIFS / STUCCO		
B-1	Shingles Milling	CM-7

P-1	Sherwin Williams	SW7665 Tinsmith
P-2	Sherwin Williams	SW7666 Fleur de Sel
P-3	Sherwin Williams	SW7668 Gray Clouds
P-4	Sherwin Williams	SW7650 Ellie Gray
P-5	Sherwin Williams	SW9163 Tin Lizzie
P-6	Sherwin Williams	SW7536 Bittersweet Stem
P-7	Sherwin Williams	SW9168 Double Lattice
P-8	Sherwin Williams	SW7031 Meade Grange
P-9	Sherwin Williams	SW9168 Elephant Ear
P-10	Sherwin Williams	SW7025 Backdrop
P-11	Sherwin Williams	SW7019 Gauntlet Gray
P-12	Sherwin Williams	SW7025 Griffin
P-13	Sherwin Williams	SW7025 Iced Mocha
P-14	Sherwin Williams	SW7705 Wheat Penny
P-15	Sherwin Williams	SW2808 Rookwood Dark Brown

### METAL COPING / METAL ROOFING

MC-1	Berridge Manufacturing	Shasta White	
MC-2 / MR-2	Berridge Manufacturing	Zinc Grey	

METAL AWNING

MA-1	Berridge Manufacturing	Burgundy
MA-2	Berridge Manufacturing	Terra-Cotta
MA-3	Berridge Manufacturing	Charcoal Grey
MA-4	Berridge Manufacturing	Shasta White

## ALUMINUM STOREFRONT

AS-1 Kawneer Clear Anodized

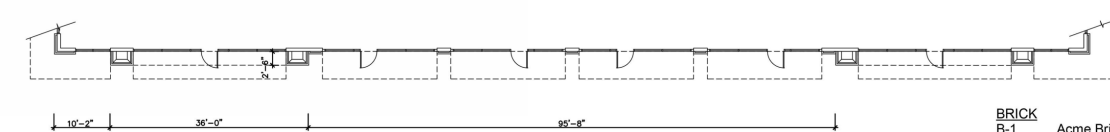
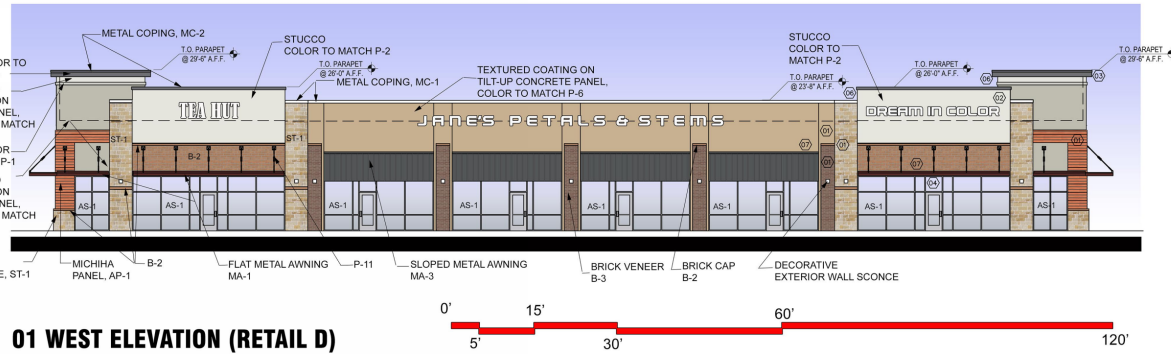
## ARCHITECTURAL PANELS

AP-1	Nichiha Vintagewood	Redwood
AP-2	Nichiha Vintagewood	Bark
AP-3	Nichiha Vintagewood	Ash

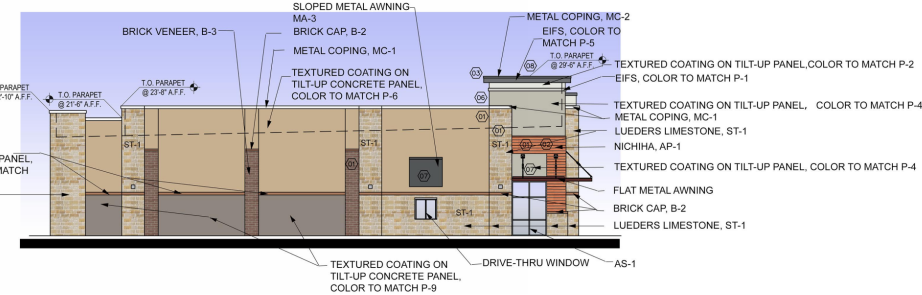
Materials and colors subject to change based on availability. Substituted color to remain in a similar color palette.



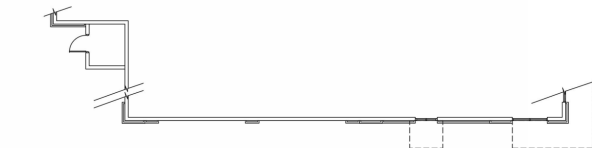




PLAN PROFILE



02 NORTH ELEVATION (RETAIL D)



PLAN PROFILE

NOTE: ALL AWNINGS ARE AT 6" IN DEPTH

## Facade Calculations (Retail D)

Facade	Face or mostly parallel to street	Area of Facade	Area of Windows	Percentage of Facade	Required	Meets
West	Yes	4,746 SF	1,541 SF	32.5%	25%	Yes
North	No	2,339 SF	80 SF	3.4%	Not required	Yes

## Material Calculations (Retail D)

Facade	Stone or Brick	Architectural Panels	Textured Coating on Concrete	Stucco	EIFS	Accent Materials	Total
West	942 sf, 28.5%	136 sf, 4.3%	1,549 sf, 46.8%	536 sf, 16%	46 sf, 1.4%	96 sf, 3%	3,305 sf 100%
North	777 sf, 34.4%	68 sf, 3%	1,345 sf, 59.5%	0	20 sf, 0.9%	49 sf, 2.2%	2,259 sf 100%

**BRICK**  
B-1 Acme Brick  
B-2 Acme Brick  
B-3 Acme Brick

**STONE**  
ST-1 Lueder's Limestone  
ST-2 Lueder's Limestone

### PAINT / TEXTURE COAT / EIFS / STUCCO

P-1 Sherwin Williams SW7657 Tinsmith  
P-2 Sherwin Williams SW7666 Fleur de Sel  
P-3 Sherwin Williams SW7658 Gray Clouds  
P-4 Sherwin Williams SW7650 Ellie Gray  
P-5 Sherwin Williams SW9163 Tin Lizzie  
P-6 Sherwin Williams SW7536 Bittersweet Stem  
P-7 Sherwin Williams SW9108 Double Latte  
P-8 Sherwin Williams SW7031 Mega Greige  
P-9 Sherwin Williams SW9168 Elephant Ear  
P-10 Sherwin Williams SW7025 Backdrop  
P-11 Sherwin Williams SW7019 Gauntlet Gray  
P-12 Sherwin Williams SW7026 Griffin  
P-13 Sherwin Williams SW9092 Iced Mocha  
P-14 Sherwin Williams SW7705 Wheat Penny  
P-15 Sherwin Williams SW2808 Rookwood Dark Brown

### METAL COPING / METAL ROOFING

MC-1 Berridge Manufacturing Shasta White  
MC-2 / MR-2 Berridge Manufacturing Zinc Grey

### METAL AWNING

MA-1 Berridge Manufacturing Burgundy  
MA-2 Berridge Manufacturing Terra-Cotta  
MA-3 Berridge Manufacturing Charcoal Grey  
MA-4 Berridge Manufacturing Shasta White

### ALUMINUM STOREFRONT

AS-1 Kawneer Clear Anodized

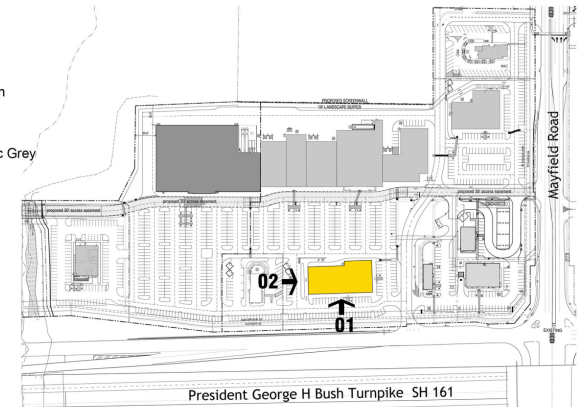
### ARCHITECTURAL PANELS

AP-1 Nichiha Vintagewood Redwood  
AP-2 Nichiha Vintagewood Bark  
AP-3 Nichiha Vintagewood Ash

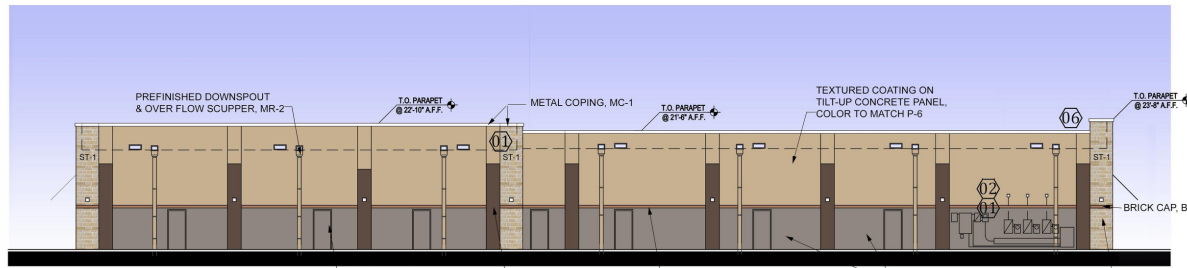
Marble Gray Smooth (King Size)  
Cinnamon Brown (King Size)  
Brookshire (King Size)

Color: Buff Type: Random Chopped 100% Roughback  
Color: Buff Type: Sawn 6 Sides.

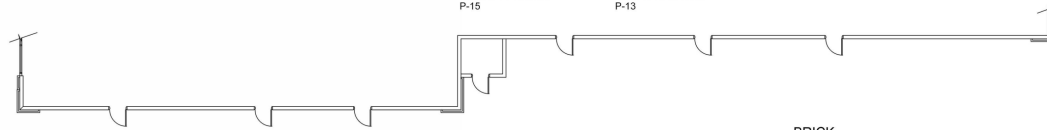
Building Design Menu Items	Legend
Material Mix	01
Color Contrast	02
Corner Treatment	03
Articulated Public Entrance	04
Buildings at Intersections	05
Roof Profile Variation	06
Canopy Variation	07
Design Elements	08



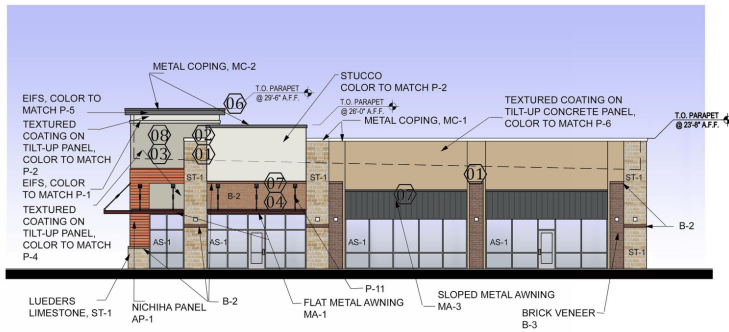
Materials and colors subject to change based on availability. Substituted color to remain in a similar color palette.



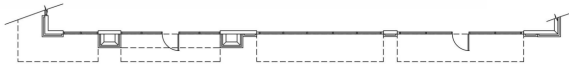
01 EAST ELEVATION (RETAIL D)



PLAN PROFILE



02 SOUTH ELEVATION (RETAIL D)



PLAN PROFILE



### Facade Calculations (Retail D)

Facade	Face or mostly parallel to street	Area of Facade	Area of Windows	Percentage of Facade	Required	Meets
East	No	4,159 SF	0 SF	0%	Not required	N.A
South	Yes	2,350 SF	703 SF	30%	25%	Yes

### Material Calculations (Retail D)

Facade	Stone or Brick	Architectural Panels	Textured Coating on Concrete	Stucco	EIFS	Accent Materials	Total
East	276 sf., 6.6%	0 sf., 0%	3,621 sf., 87.1%	0	0 sf., 0%	262sf., 6.3%	4,159 sf 100%
South	529 sf., 32.1%	69 sf., 4.2%	970 sf., 59.2%	174sf., 10.6%	23 sf., 1.4%	48 sf., 2.9%	1,647 sf 100%

#### BRICK

B-1	Acme Brick	Marble Gray Smooth (King Size)
B-2	Acme Brick	Cinnamon Brown (King Size)
B-3	Acme Brick	Brookshire (King Size)

#### STONE

ST-1	Lueder's Limestone	Color: Buff Type: Random Chopped 100% Roughback
ST-2	Lueder's Limestone	Color: Buff Type: Sawn 6 Sides.

#### PAINT / TEXTURE COAT / EIFS / STUCCO

P-1	Sherwin Williams	SW7657 Tinsmith
P-2	Sherwin Williams	SW7666 Fleur de Sel
P-3	Sherwin Williams	SW7658 Gray Clouds
P-4	Sherwin Williams	SW7650 Ellie Gray
P-5	Sherwin Williams	SW9163 Tin Lizzie
P-6	Sherwin Williams	SW7536 Bittersweet Stem
P-7	Sherwin Williams	SW9108 Double Latte
P-8	Sherwin Williams	SW7031 Mega Greige
P-9	Sherwin Williams	SW9168 Elephant Ear
P-10	Sherwin Williams	SW7025 Backdrop
P-11	Sherwin Williams	SW7019 Gauntlet Gray
P-12	Sherwin Williams	SW7026 Griffin
P-13	Sherwin Williams	SW9092 Iced Mocha
P-14	Sherwin Williams	SW7705 Wheat Penny
P-15	Sherwin Williams	SW2808 Rookwood Dark Brown

#### METAL COPING / METAL ROOFING

MC-1	Berridge Manufacturing	Shasta White
MC-2 / MR-2	Berridge Manufacturing	Berridge Manufacturing Zinc Grey

#### METAL AWNING

MA-1	Berridge Manufacturing	Burgundy
MA-2	Berridge Manufacturing	Terra-Cotta
MA-3	Berridge Manufacturing	Charcoal Grey
MA-4	Berridge Manufacturing	Shasta White

#### ALUMINUM STOREFRONT

AS-1	Kawneer	Clear Anodized
------	---------	----------------

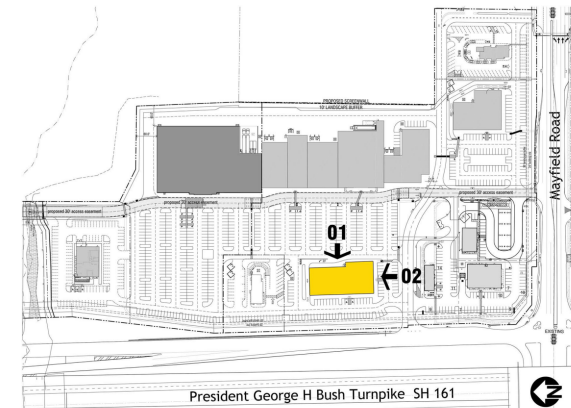
#### ARCHITECTURAL PANELS

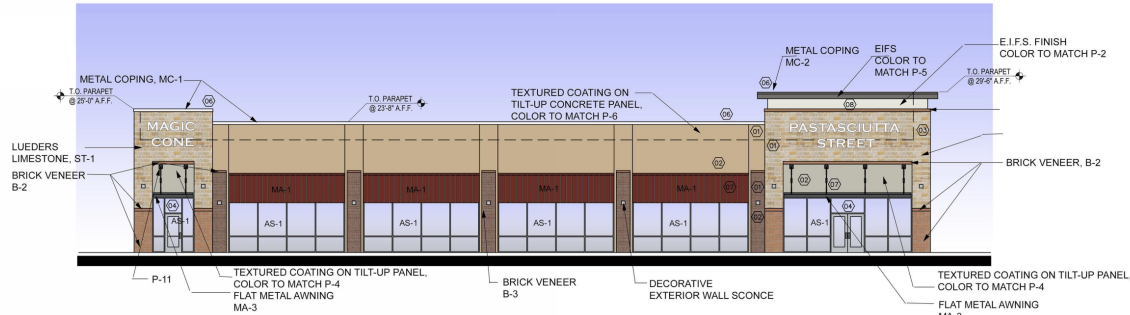
AP-1	Nichiha Vintagewood	Redwood
AP-2	Nichiha Vintagewood	Bark
AP-3	Nichiha Vintagewood	Ash

Materials and colors subject to change based on availability. Substituted color to remain in a similar color palette.

NOTE: ALL AWNINGS ARE AT 6" IN DEPTH

Building Design Menu Items	Legend
Material Mix	01
Color Contrast	02
Corner Treatment	03
Articulated Public Entrance	04
Buildings at Intersections	05
Roof Profile Variation	06
Canopy Variation	07
Design Elements	08



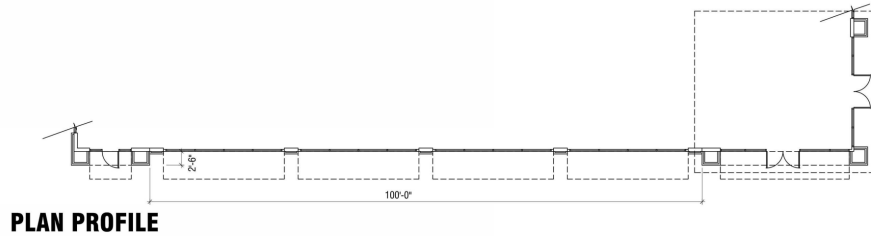


### Facade Calculations (Retail B)

Facade	Face or mostly parallel to street	Area of Facade	Area of Windows	Percentage of Facade	Required	Meets
West	Yes	3,622 SF	1,184 SF	32.7%	25%	Yes
North	No	2,749 SF	89 SF	3.2%	Not required	NA

### Material Calculations (Retail B)

Facade	Stone or Brick	Architectural Panels	Textured Coating on Concrete	Stucco	EIFS	Accent Materials	Total
West	834 sf 34.2%	0	1,441 sf., 59.1%	0	95 sf. 3.9%	68sf., 2.8%	2,438 sf 100%
North	525 sf., 19.7%	0	2,075 sf., 78%	0	0	60 sf., 2.3%	2,660 sf 100%



#### BRICK

- B-1 Acme Brick
- B-2 Acme Brick
- B-3 Acme Brick

Marble Gray Smooth (King Size)  
Cinnamon Brown (King Size)  
Brookshire (King Size)

#### STONE

- ST-1 Lueder's Limestone
- ST-2 Lueder's Limestone

Color: Buff Type: Random Chopped 100% Roughback  
Color: Buff Type: Sawn 6 Sides.

#### PAINT / TEXTURE COAT / EIFS / STUCCO

- P-1 Sherwin Williams SW7657 Tinsmith
- P-2 Sherwin Williams SW7666 Fleur de Sel
- P-3 Sherwin Williams SW7658 Gray Clouds
- P-4 Sherwin Williams SW7650 Ellie Gray
- P-5 Sherwin Williams SW9163 Tin Lizzie
- P-6 Sherwin Williams SW7536 Bittersweet Stem
- P-7 Sherwin Williams SW9108 Double Latte
- P-8 Sherwin Williams SW7031 Mega Greige
- P-9 Sherwin Williams SW9168 Elephant Ear
- P-10 Sherwin Williams SW7025 Backdrop
- P-11 Sherwin Williams SW7019 Gauntlet Gray
- P-12 Sherwin Williams SW7026 Griffin
- P-13 Sherwin Williams SW9092 Iced Mocha
- P-14 Sherwin Williams SW7705 Wheat Penny
- P-15 Sherwin Williams SW2808 Rookwood Dark Brown

#### METAL COPING / METAL ROOFING

- MC-1 Berridge Manufacturing
- MC-2 / MR-2

Shasta White  
Berridge Manufacturing Zinc Grey

#### METAL AWNING

- MA-1 Berridge Manufacturing
- MA-2 Berridge Manufacturing
- MA-3 Berridge Manufacturing
- MA-4 Berridge Manufacturing

Burgundy  
Terra-Cotta  
Charcoal Grey  
Shasta White

#### ALUMINUM STOREFRONT

- AS-1 Kawneer

Clear Anodized

#### ARCHITECTURAL PANELS

- AP-1 Nichiha Vintagewood
- AP-2 Nichiha Vintagewood
- AP-3 Nichiha Vintagewood

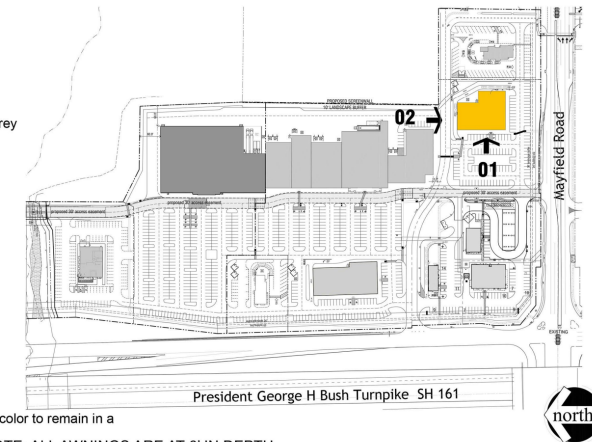
Redwood  
Bark  
Ash

Materials and colors subject to change based on availability. Substituted color to remain in a similar color palette.

NOTE: ALL AWNINGS ARE AT 6" IN DEPTH

14043-01, SP-52, 09-20-2019, Sheet-7

Building Design Menu Items	Legend
Material Mix	01
Color Contrast	02
Corner Treatment	03
Articulated Public Entrance	04
Buildings at Intersections	05
Roof Profile Variation	06
Canopy Variation	07
Design Elements	08

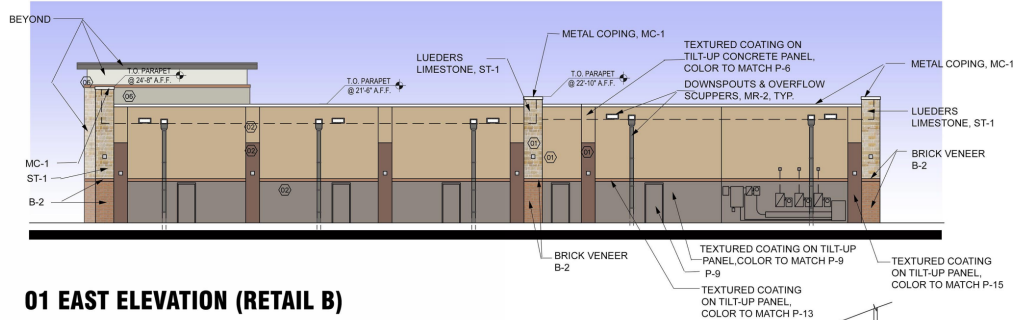


# EPIC EAST TOWNE CROSSING -- RETAIL B

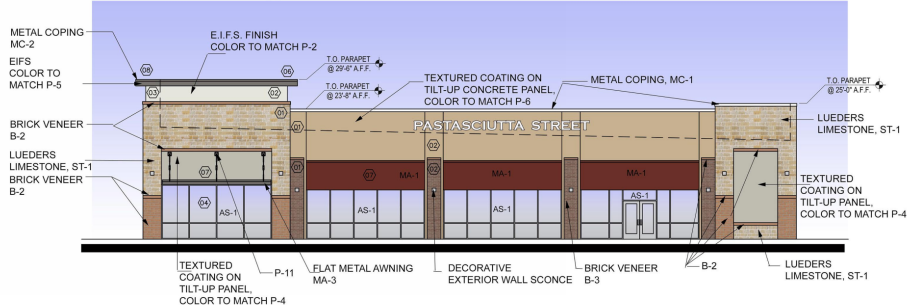
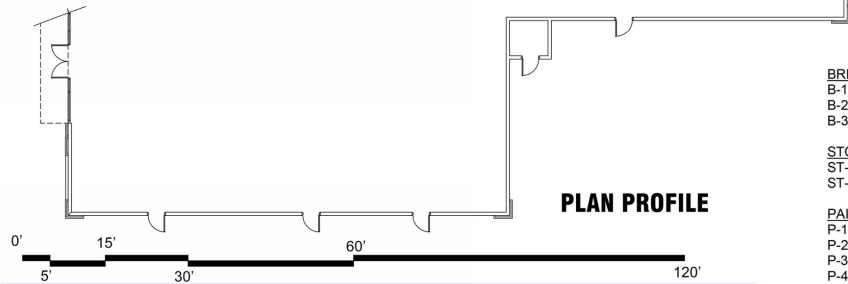


S191001

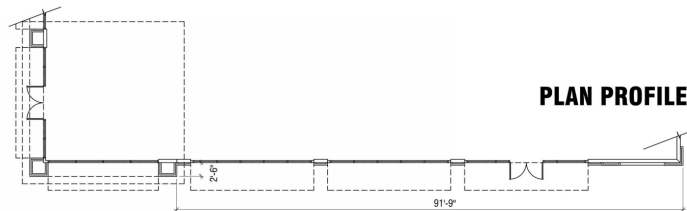




01 EAST ELEVATION (RETAIL B)



02 SOUTH ELEVATION (RETAIL B)



<b>BRICK</b>		
B-1	Acme Brick	Marble Gray Smooth (King Size)
B-2	Acme Brick	Cinnamon Brown (King Size)
B-3	Acme Brick	Brookshire (King Size)
<b>STONE</b>		
ST-1	Lueder's Limestone	Color: Buff Type: Random Chopped 100% Roughback
ST-2	Lueder's Limestone	Color: Buff Type: Sawn 6 Sides.
<b>PAINT / TEXTURE COAT / EIFS / STUCCO</b>		
P-1	Sherwin Williams	SW7657 Tinsmith
P-2	Sherwin Williams	SW7666 Fleur de Sel
P-3	Sherwin Williams	SW7658 Gray Clouds
P-4	Sherwin Williams	SW7650 Ellie Gray
P-5	Sherwin Williams	SW9163 Tin Lizzie
P-6	Sherwin Williams	SW7536 Bittersweet Stem
P-7	Sherwin Williams	SW9108 Double Latte
P-8	Sherwin Williams	SW7031 Mega Greige
P-9	Sherwin Williams	SW9168 Elephant Ear
P-10	Sherwin Williams	SW7025 Backdrop
P-11	Sherwin Williams	SW7019 Gauntlet Gray
P-12	Sherwin Williams	SW7026 Griffin
P-13	Sherwin Williams	SW9092 Iced Mocha
P-14	Sherwin Williams	SW7705 Wheat Penny
P-15	Sherwin Williams	SW2808 Rookwood Dark Brown

<b>METAL COPING / METAL ROOFING</b>	
MC-1	Berridge Manufacturing Shasta White
MC-2 / MR-2	Berridge Manufacturing Zinc Grey

<b>METAL AWNING</b>	
MA-1	Berridge Manufacturing Burgundy
MA-2	Berridge Manufacturing Terra-Cotta
MA-3	Berridge Manufacturing Charcoal Grey
MA-4	Berridge Manufacturing Shasta White

<b>ALUMINUM STOREFRONT</b>	
AS-1	Kawneer Clear Anodized

<b>ARCHITECTURAL PANELS</b>	
AP-1	Nichiha Vintagewood Redwood
AP-2	Nichiha Vintagewood Bark
AP-3	Nichiha Vintagewood Ash

Materials and colors subject to change based on availability. Substituted color to remain in a similar color palette.



## Facade Calculations (Retail B)

Facade	Face or mostly parallel to street	Area of Facade	Area of Windows	Percentage of Facade	Required	Meets
East	No	3,077 SF	0	0	0	N.A.
South	Yes	2,978 SF	869 SF	29.2%	25%	Yes

## Material Calculations (Retail B)

Facade	Stone or Brick	Architectural Panels	Textured Coating on Concrete	Stucco	EIFS	Accent Materials	Total
East	230 sf, 7.5%	0	2,655 sf., 86.3%	0	0	192sf., 6.2%	3,077 sf 100%
South	776 sf., 36.8%	0	1,193 sf., 56.5%	0	84 sf., 4%	56 sf., 2.7%	2,109 sf 100%

Building Design Menu Items	Legend
Material Mix	01
Color Contrast	02
Corner Treatment	03
Articulated Public Entrance	04
Buildings at Intersections	05
Roof Profile Variation	06
Canopy Variation	07
Design Elements	08

