

SUPPLEMENTAL EXHIBITS 2

I.L. TEXAS—
GRAND PRAIRIE

OWNERS
ROBERT J. & LOLA D. ELLICH
2431 COUNTY ROAD 290
CARBON, TX 76435
CONTACT: ROBERT J. ELLICH

DEVELOPER
THE CHARTER SCHOOL FUND II, LLC.
855 BRAD STREET, SUITE 300
BOISE, ID 83702
CONTACT: BRIAN HUFFAKER
PH: 208-968-5505
FAX: 208-439-1954

**ENGINEER/SURVEYOR/
LANDSCAPE ARCHITECT**
MYCOSKE+MUNN+ASSOCIATES
200 E. ADAM STREET
ARLINGTON, TEXAS 76010
CONTACT: JACOB SUMPTER, AEP
PH: 817-469-1671
FAX: 817-274-8757

ARCHITECT
BRS ARCHITECTS
1010 ALLANIE PLACE, STE. 100
BOISE, ID 83709
CONTACT: JOE FEALEY
PH: 208-336-8370
FAX: 208-336-8380

SITE PLAN DATA TABLE

[illegible]

SITE PLAN DATA TABLE (CONT.)

[illegible]

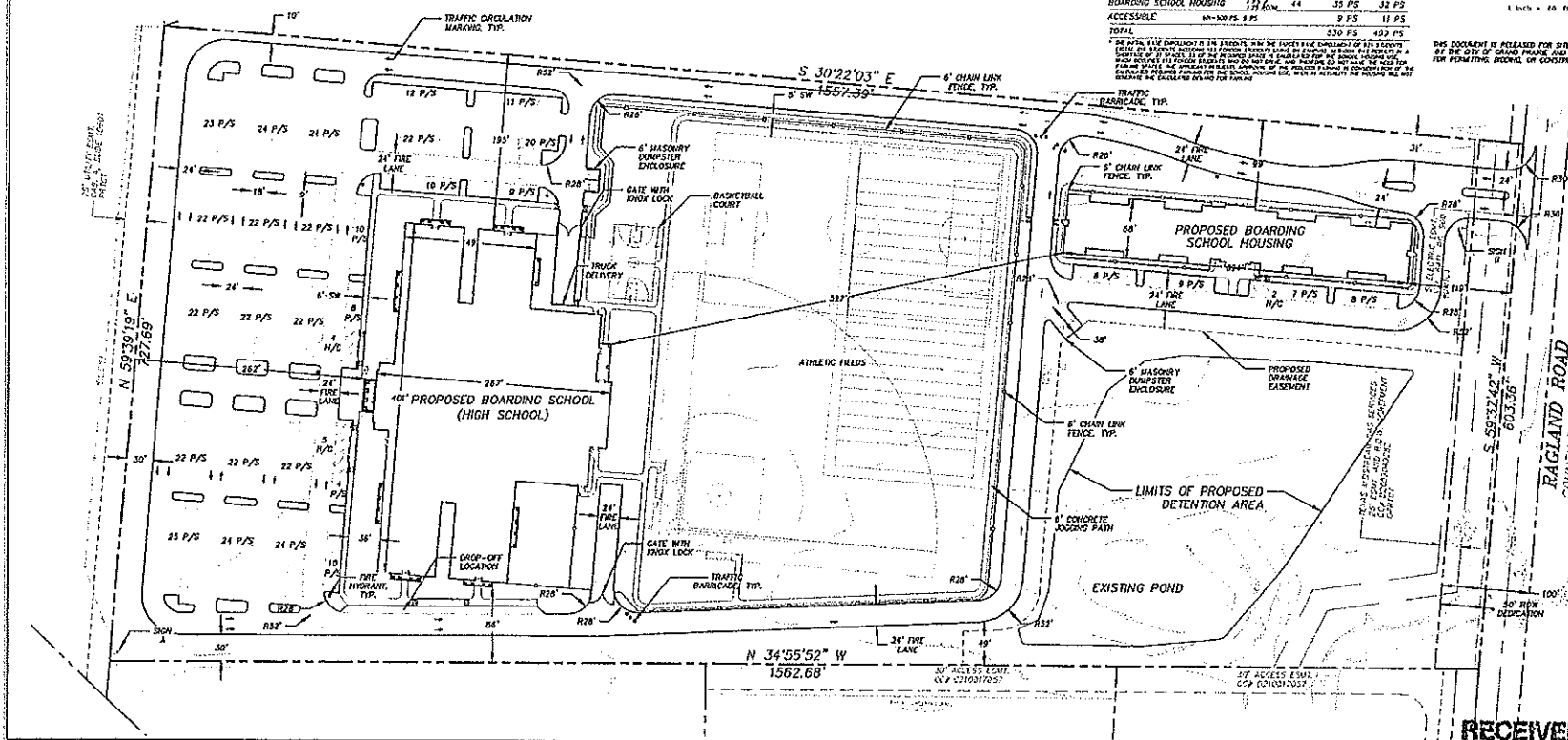
PARKING TABLE

	REQUIREMENT	#	SPACES REQUIRED	SPACES AVAILABLE
BOARDING SCHOOL	1 PS / 15 STUDENT + 624*	416	416 PS	384 PS
	1 PS / 15 STUDENT + 1141*	70	70 PS	70 PS
BOARDING SCHOOL HOUSING	1 PS / 10	44	35 PS	32 PS
ACCESSIBLE	60-100 PS. 9 PS		9 PS	11 PS
TOTAL			510 PS	497 PS

VICINITY MAP



THIS DOCUMENT IS RELEASED FOR SITE PLAN APPROVAL
OF THE CITY OF GRAND PRairie AND IS NOT INTENDED
FOR PERMITTING, BIDDING, OR CONSTRUCTION PURPOSES



TEXAS GRAND PRAIRIE
SITE PLAN
2851 RAGLAND ROAD
GRAND PRAIRIE, TEXAS

PROJECT NAME
1.1. TEXAS GRAND PRAIRIE
SITE PLAN

mim
mycoside / mirris / associates
and engineering, serving foreign contractors plant
design and construction
11200 Highway 100, Suite 200
Dallas, Texas 75243
Tel: 214-343-7111
Fax: 214-343-7111
214-343-7111

PROJECT NUMBER	2748-00-0
PROJECT MANAGER	J. SHAPIRO
ORIGINATOR	J. SHAPIRO
CREATED BY	J. SHAPIRO
PLATE DATE	09/25/2004

REV.	DATE	DESCR.	B
SHEET CONTAINS:			
SITE PLAN			
S141001			

2851 RAGLAND RD.

SECRET 1/2

1

OCT 01 2014

PLANNING DEPARTMENT

SUPPLEMENTAL EXHIBITS 2



NORTHEAST CORNER PERSPECTIVE



SOUTHEAST CORNER PERSPECTIVE



SOUTHWEST CORNER PERSPECTIVE

DATE	REVISIONS	NO.

1010 S. ALLANTE PL.
SUITE 100
DALLAS, TX 75240 83709
(214) 336-8370
FAX (214) 336-8380

BPS
ARCHITECTS

PROPOSED DEVELOPMENT FOR:
**INTERNATIONAL LEADERSHIP
OF TEXAS**
BOARDING SCHOOL
GRAND PRAIRIE, TX

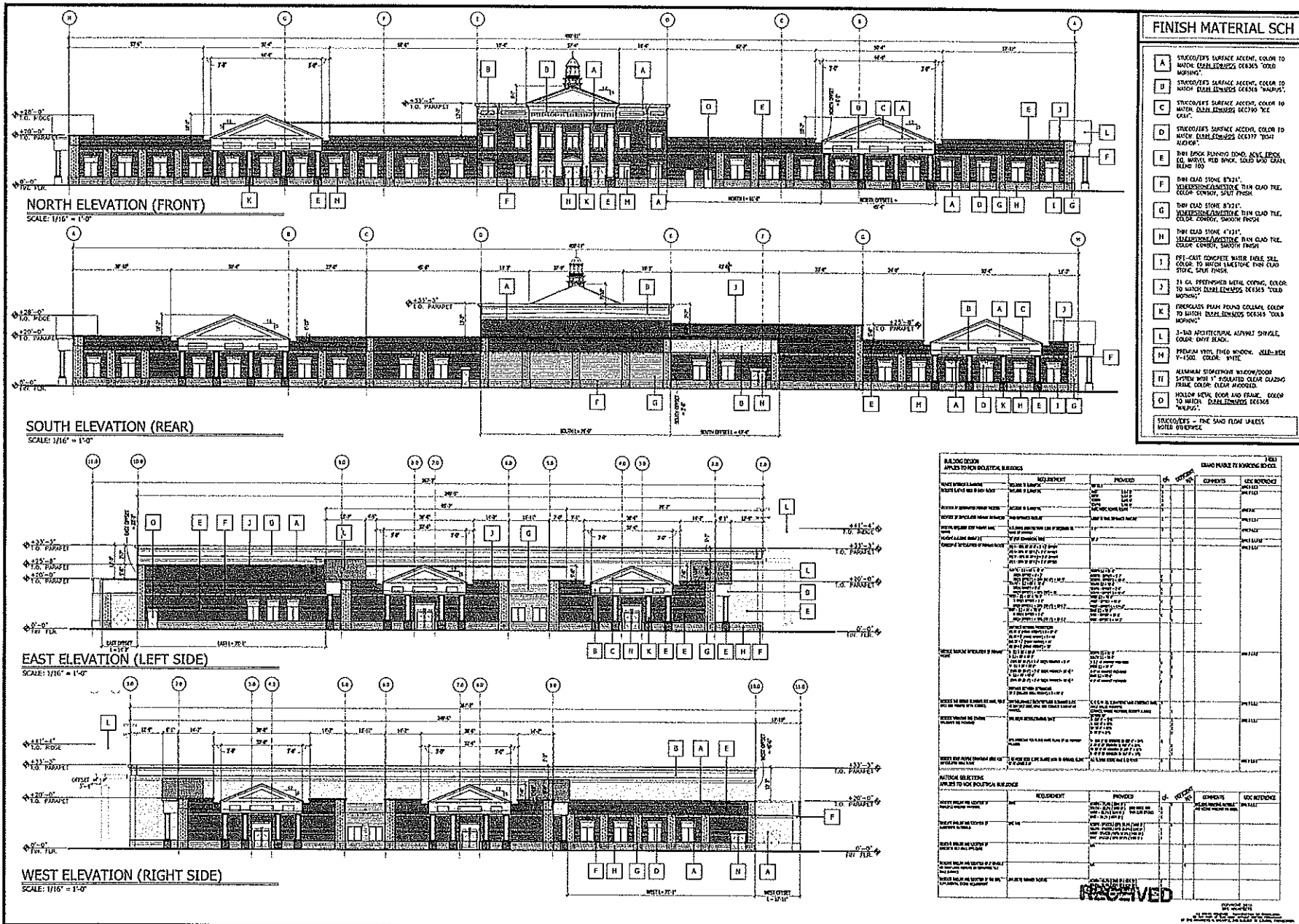
DRAWN	TJK
DATE	08.18.14
CHECKED	TJK
JOB NO.	14063
SHEET	A3.0

RECEIVED

OCT 01 2014

PLANNING DEPARTMENT

SUPPLEMENTAL EXHIBITS 2



DATE	
REVISIONS	
NO.	

1010 S. ALLAMANT PL
SUITE 100
BOISE, IDAHO 83709
(208) 333-1100
FAX (208) 333-1880



PROPOSED DEVELOPMENT FOR:
**INTERNATIONAL LEADERSHIP
SCHOOL OF TEXAS**

DRAWN: AUR
DATE: 9/12/14
CHECKED: TJK
JOB NO.: 14053

A2.0

OCT 01 2014

PLANNING DEPARTMENT

SUPPLEMENTAL EXHIBITS 2



NORTHWEST CORNER PERSPECTIVE

SCALE: 1/8" = 1'-0"



SOUTHEAST CORNER PERSPECTIVE

SCALE: 1/8" = 1'-0"



NORTHEAST CORNER PERSPECTIVE

SCALE: 1/8" = 1'-0"

DATE	
REVISIONS	
NO.	

1010 S. ALAMITE PL.
BOISE, IDAHO 83709
(208) 336-5370
FAX (208) 336-8380

BRS
ARCHITECTS

PROPOSED DEVELOPMENT FOR
**INTERNATIONAL LEADERSHIP
OF TEXAS**
BOARDING SCHOOL, HOUSING

GRAND PRISSE, TX

DRAWN	JEP - JAB
DATE	08.18.14
CHECKED	ADR
JOB NO.	14054
SHEET	

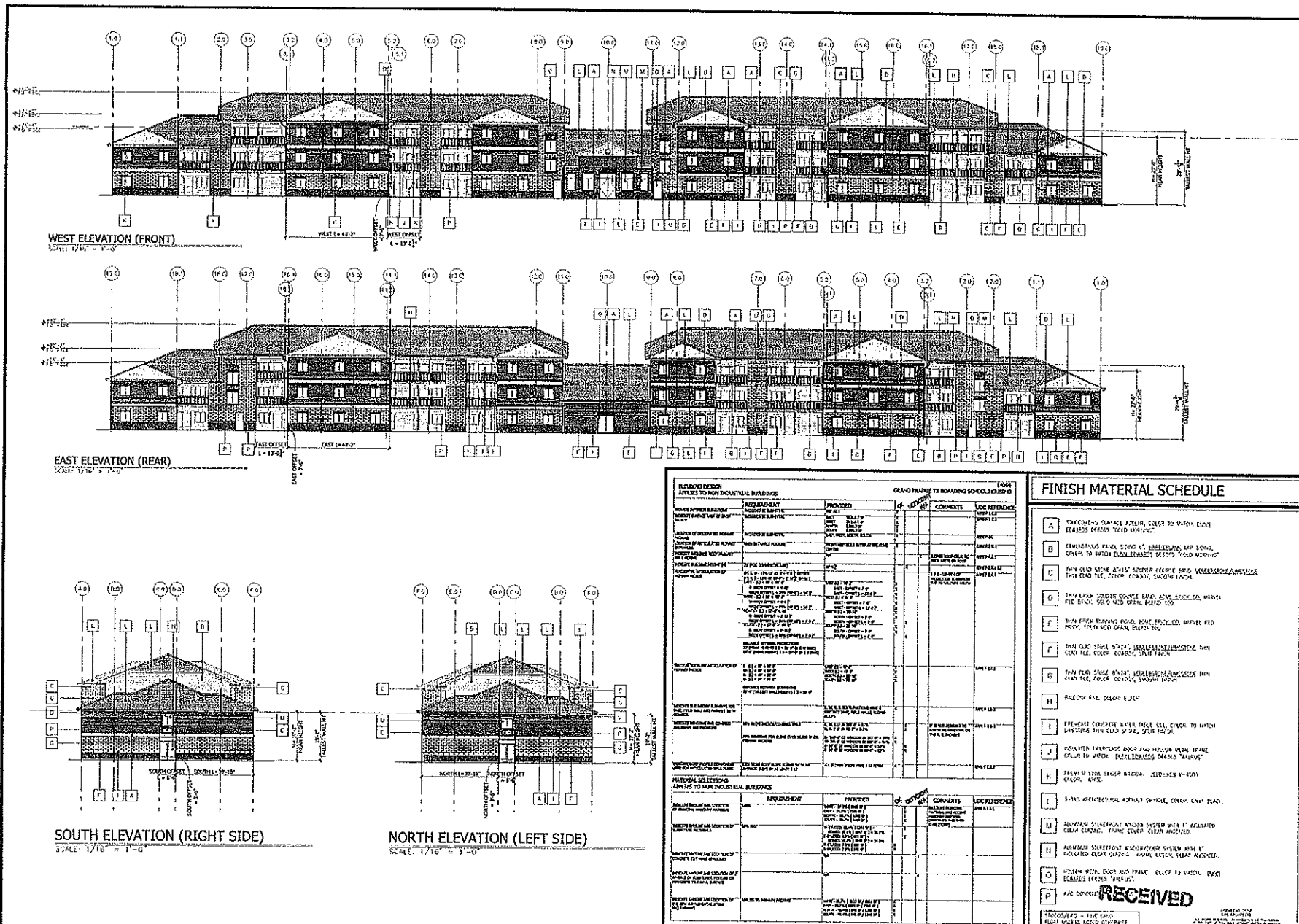
A3.1

RECEIVED

OCT 01 2014

PLANNING DEPARTMENT

SUPPLEMENTAL EXHIBITS 2

[illegible]

BRS
ARCHITECTS

1010 S. ALLANTO PL.
SUITE 100
BOISE, IDAHO 83709
(208) 336-8370
FAX (208) 336-8380

MODIFIED DEVELOPMENT FOR:

INTERNATIONAL LEADERSHIP
OF TEXAS

CARDING SCHOOL HOUSING GRAND PRICING, TX

DRAWN	ALR
DATE	9/23/14
CHECKED	JPV
DWG NO.	14054
SHEET	A2.1

OCT 01 2014

PLANNING DEPARTMENT