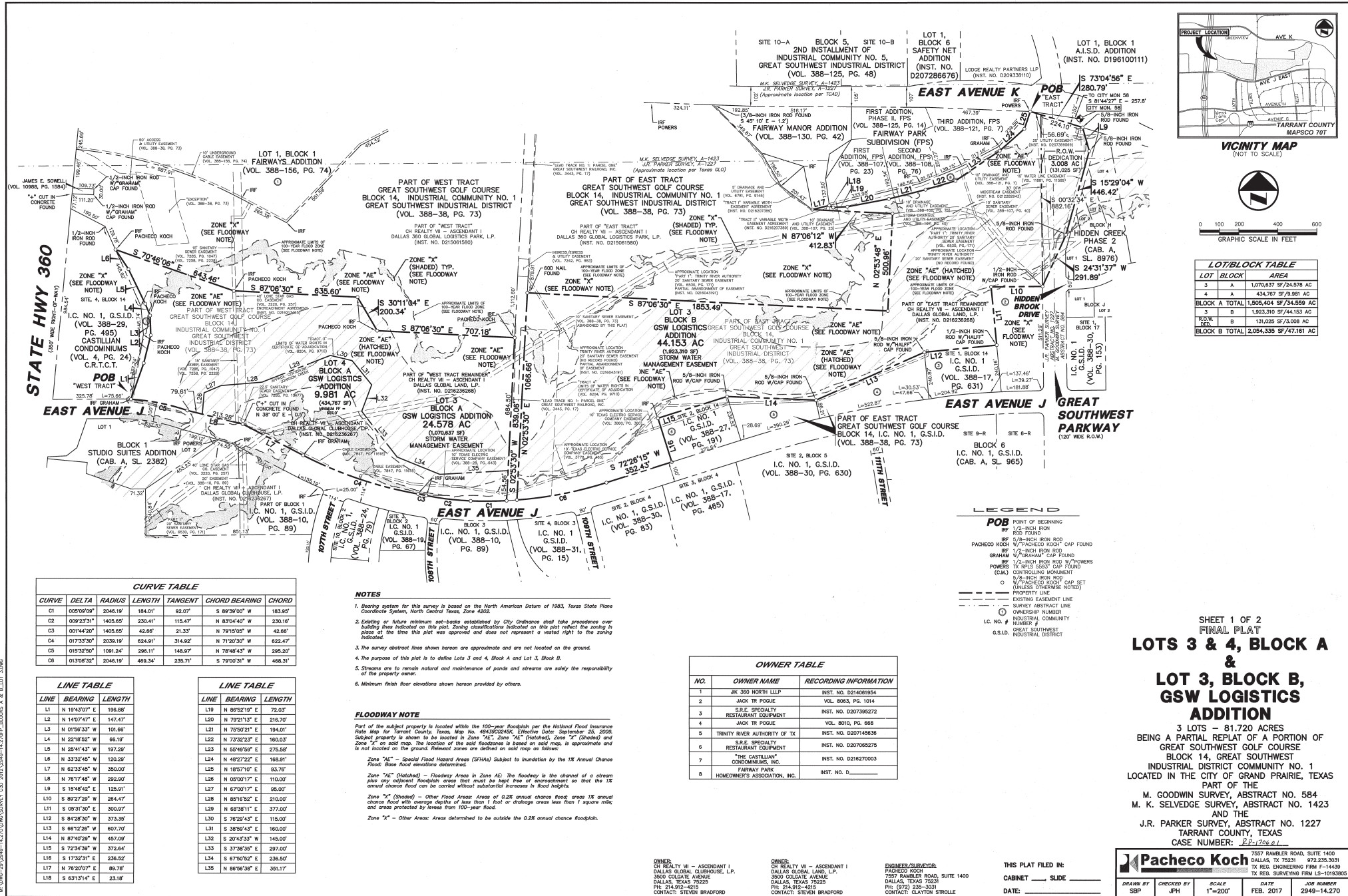




CASE LOCATION MAP
Case Number: SU181201/S181201
GSW Logistics Addition, **623** E. Avenue J



City of Grand Prairie
Planning and Development
☎ (972) 237-8257 🌐 www.gptx.org



DATE: 02/01/2017 BY: A. BROWN
FILE: 20170201-142707P-BLOCKS A & B LOT 3

FINAL PLAT - LOTS 3 & 4, BLOCK A & LOT 3, BLOCK B, GSW LOGISTICS ADDITION

SHEET 1 OF 2
FINAL PLAT
LOTS 3 & 4, BLOCK A & LOT 3, BLOCK B, GSW LOGISTICS ADDITION
3 LOTS - 81,720 ACRES
BEING A PARTIAL REPLAT OF A PORTION OF
GREAT SOUTHWEST GOLF COURSE
BLOCK 14, GREAT SOUTHWEST
INDUSTRIAL DISTRICT COMMUNITY NO. 1
LOCATED IN THE CITY OF GRAND PRAIRIE, TEXAS
PART OF THE
M. GOODWIN SURVEY, ABSTRACT NO. 584
M. K. SELVEDGE SURVEY, ABSTRACT NO. 1423
AND THE
J.R. PARKER SURVEY, ABSTRACT NO. 1227
TARRANT COUNTY, TEXAS
CASE NUMBER: EP-120621

Pacheco Koch		7557 RAMBLER ROAD, SUITE 1400 DALLAS, TX 75231 972.285.3031
DRAWN BY SBP	CHECKED BY JPH	SCALE 1"=200'
DATE: FEB. 2017		JOB NUMBER 2949-14.270

DWG. FILE: 2949-14.2707P-BLOCKS A & B LOT 3.DWG
XREF FILE: 2949-14.2707A-2015.DWG