

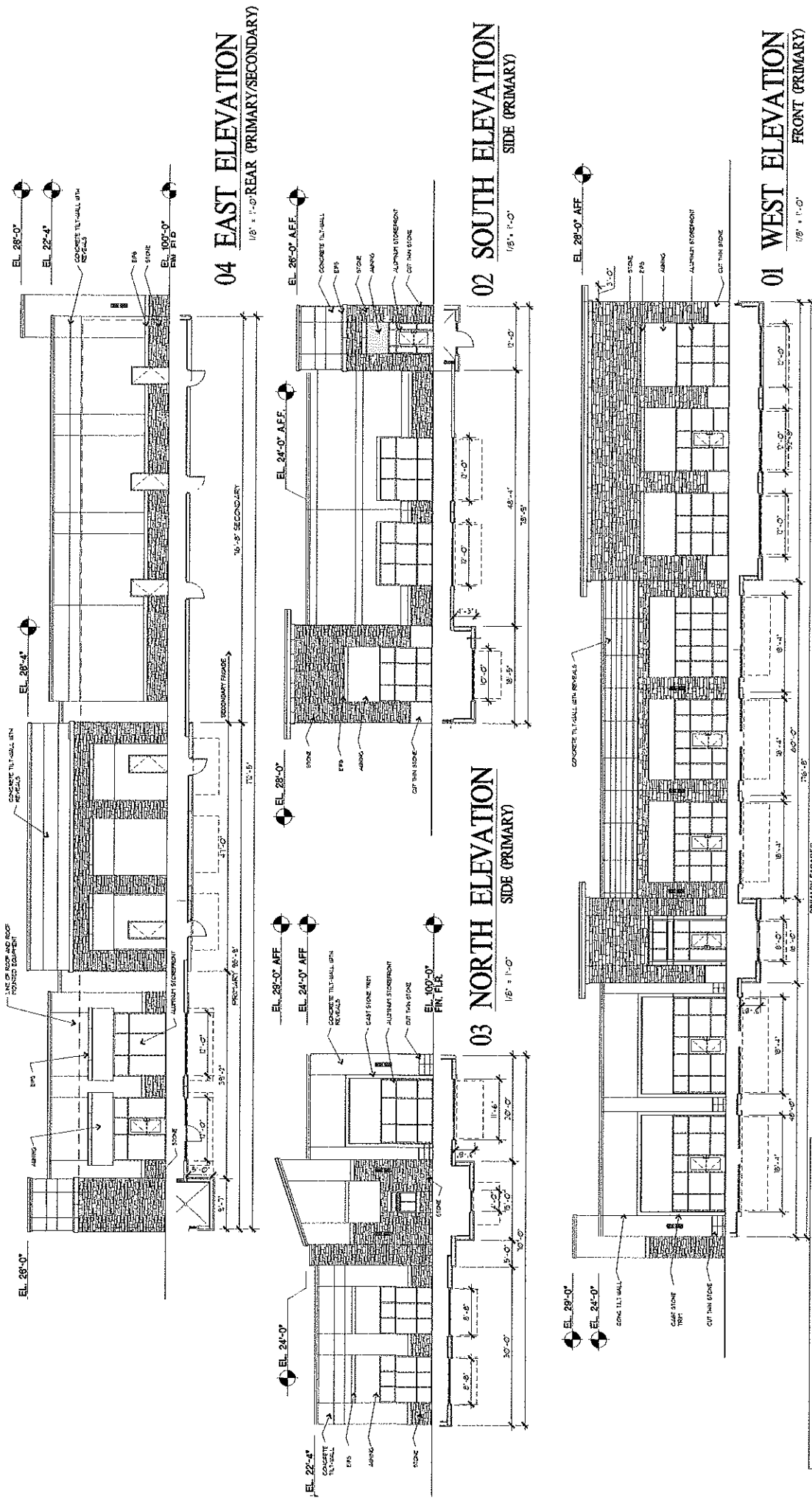
Case Number SU170501/5170507

Project No
17014

04-28/17	04-28/17	04-28/17
----------	----------	----------

PRAIRIE, TEXAS 76014

ALL INFORMATION CONTAINED HEREIN IS UNCLASSIFIED
DATE 08-01-2001 BY 60322 UCBAW/STP



NOTES:
ROOF MOUNTED EQUIPMENT WILL NOT BE VISIBLE FROM THE RIGHT OF WAY.
ROOF MOUNTED EQUIPMENT WILL NOT BE PLACED LESS THAN 10' OF BUILDING EDGE.

TABULATIONS

ELEVATION	OVERALL	AREA OF OPENINGS	RESULTANT AREA	STONE	CAST STONE	CONCRETE	EIFS
NORTH (SIDE)	1,553.0	264.0	1,289.0	386.0	20.0%	298.0	75.0%
SOUTH (SIDE)	1,965.0	396.0	1,569.0	606.0	38.0%	867.0	55.0%
EAST (REAR) (PRIMARY/SECONDARY)	4,400.0	359.0	4,041.0	1,171.0	29.0%	2,743.0	67.0%
WEST (FRONT)	4,538.0	329.0	4,209.0	1,170.0	27.8%	2,743.0	65.4%
TOTAL	12,456.0	1,348.0	11,108.0	3,336.0	29.1%	5,437.0	48.7%

PRIMARY FACADE:
EVERY 11' HEIGHT MIN 600'
HORIZONTAL PROJECTION IS WALL HEIGHT
150' OF 20' MIN. REQUIRED
LENGTH OF HORIZONTAL PROJECTION 25' OF LENGTH
25' OF 6' MIN. REQUIRED
EVERY 60' FRONTAGE 15' MIN. LENGTH
VERTICAL ARTICULATION 15' MIN. HEIGHT
150' OF 20' MIN. REQUIRED
LENGTH OF ELEVATION 25' OF 6' MIN. REQUIRED

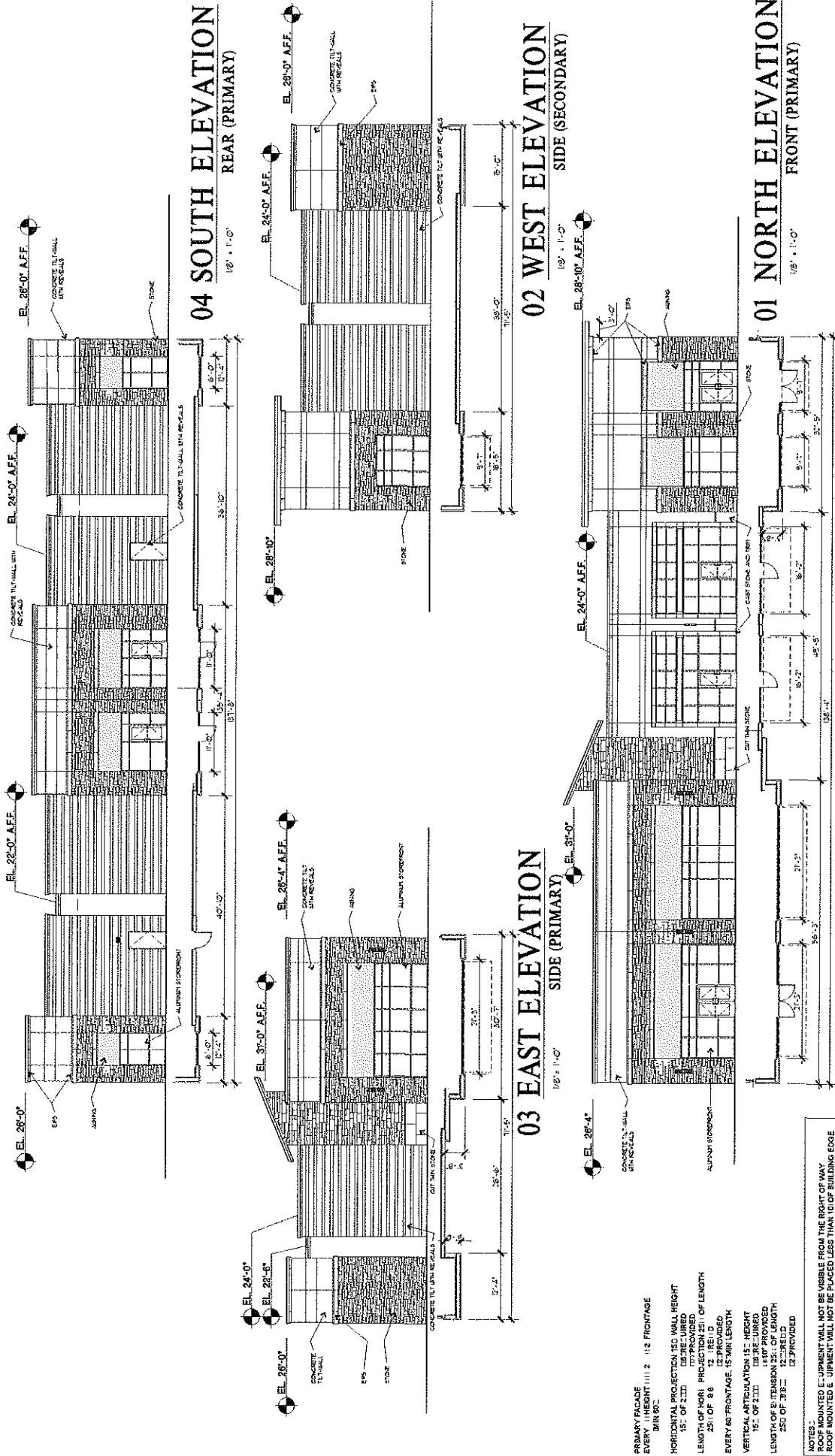


Client: GRAND PRAIRIE RETAIL 012K BUILDING A
PROJECT: RETAIL AND RESTAURANTS AT GRAND PRAIRIE CORNERS
NDC HOLDINGS, L.P.
GRAND PRAIRIE, TEXAS

Sheet No. A1E00
ISSUE DATE: 07/2017
Project No. 17-001

APR 25 2017

Received



PRIMARY FACADE
EVERY 11'-0" HEIGHT 11'-0" FRONTAGE
MIN 60"

HORIZONTAL PROJECTION 15' WALL HEIGHT
15'-0" OF 2'10"

LENGTH OF HORIZONTAL PROJECTION 25' OF LENGTH
25' OF 9' 6" 12' PROVIDED
EVERY 60' FRONTAGE 15' MIN LENGTH
15'-0" OF 2'10"

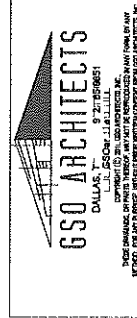
VERTICAL PROJECTION 15' HEIGHT
15'-0" OF 2'10"

LENGTH OF VERTICAL PROJECTION 25' OF LENGTH
25' OF 9' 6" 12' PROVIDED

NOTES:
1. ROOF MOUNTED EQUIPMENT WILL NOT BE VISIBLE FROM THE FRONT OF MAY
2. ROOF MOUNTED EQUIPMENT WILL NOT BE PLACED LESS THAN 10' OF BUILDING EDGE

TABULATIONS

ELEVATION	OVERALL	AREA OF OPENINGS	STONE	CAST STONE	CONCRETE TILT-UP WALL	EPS
NORTH (FRONT)	3,683 sf	1,102 sf	1,102 sf	1,102 sf	1,102 sf	1,102 sf
SOUTH (REAR)	3,683 sf	1,102 sf	1,102 sf	1,102 sf	1,102 sf	1,102 sf
EAST (SIDE)	3,683 sf	1,102 sf	1,102 sf	1,102 sf	1,102 sf	1,102 sf
WEST (SIDE) (SECONDARY)	3,683 sf	1,102 sf	1,102 sf	1,102 sf	1,102 sf	1,102 sf
TOTAL	14,672 sf	4,408 sf	4,408 sf	4,408 sf	4,408 sf	4,408 sf

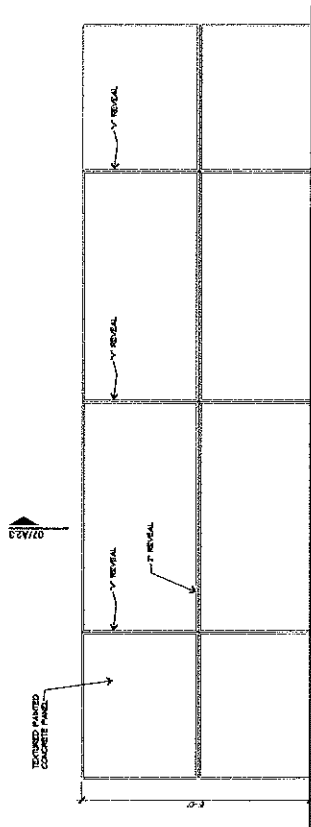


PRELIMINARY PLAN
NOT FOR CONSTRUCTION

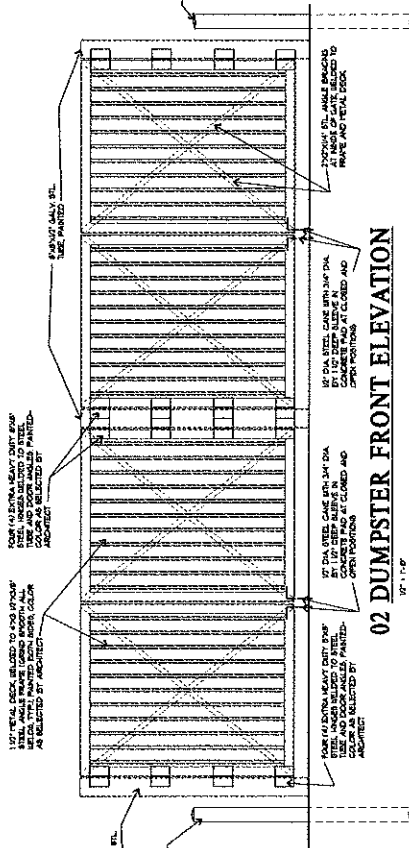
Client: GRAND PRAIRIE RETAIL CENTER	Project No: 17-011
Architect: GSO ARCHITECTS	Sheet No: B1E106
Building: BUILDING 8	Issue Date: 04/20/17
Project: GRAND PRAIRIE RETAIL CENTER	Project: GRAND PRAIRIE RETAIL CENTER

APR 25 2017

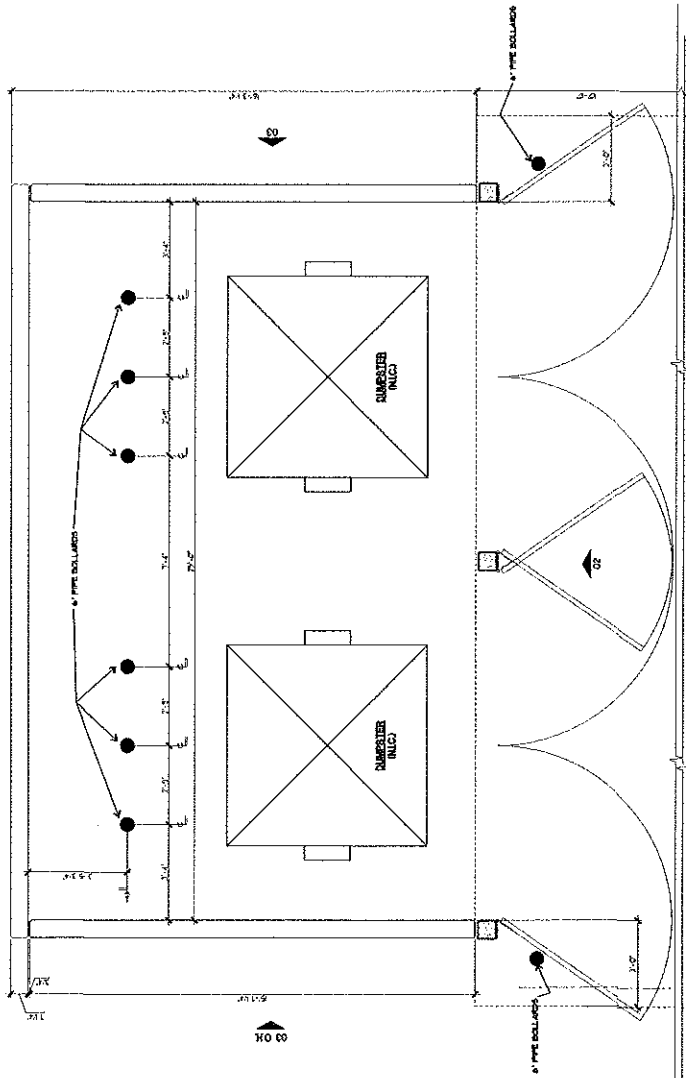
Received



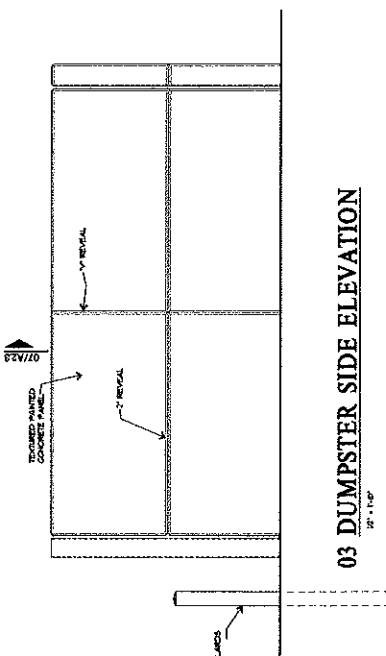
04 DUMPSTER REAR ELEVATION
12' x 12'



02 DUMPSTER FRONT ELEVATION
12' x 12'



01 DUMPSTER ENCLOSURE PLAN
12' x 12'



03 DUMPSTER SIDE ELEVATION
12' x 12'

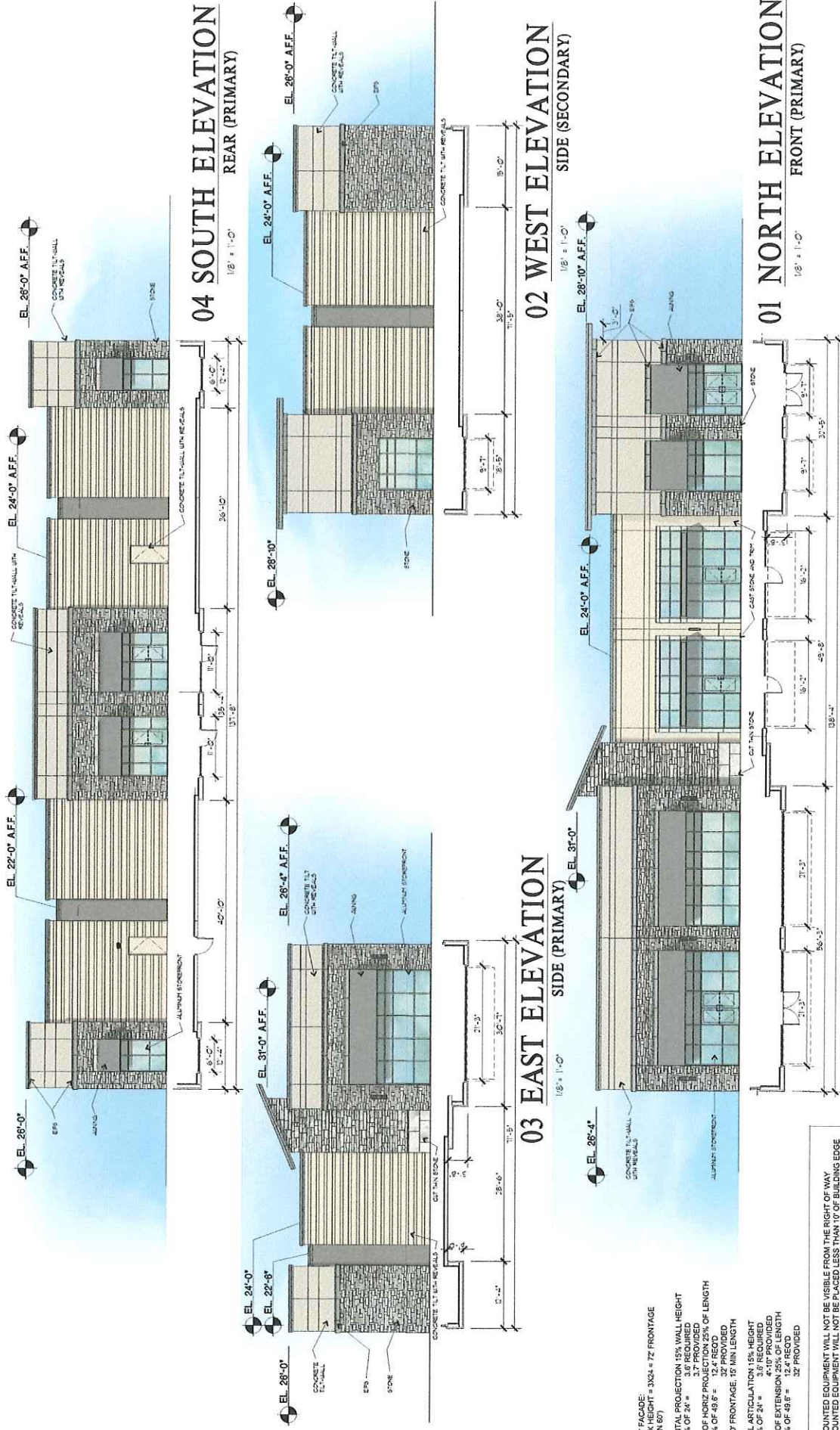
650 ARCHITECTS
DALLAS, TX 75201-1188
OFFICE: 214.760.0000
FAX: 214.760.0001
WWW.650ARCHITECTS.COM

Case Number: SUT0501/3170407
Sheet No.: TYP
TYPE: RETAIL AND RESTAURANTS AT GRAND PRAIRIE CORNERS
PROJECT NO.: 17-011
ISSUE DATE: 8/20/17

Planning Department

APR 25 2017

Drawn: [Name]



GSO ARCHITECTS
DALLAS, TEXAS
872.300.9651
GSOARCHITECTS.COM

DESIGNED BY: GSO ARCHITECTS, INC.
DRAWN BY: GSO ARCHITECTS, INC.
CHECKED BY: GSO ARCHITECTS, INC.
REVIEWED BY: GSO ARCHITECTS, INC.

Case Number: 801171504 / 25171504

GRAND PRAIRIE RETAIL - 9K
BUILDING B

Sheet No. **B-EL06**

ISSUE DATE: **04/20/17**

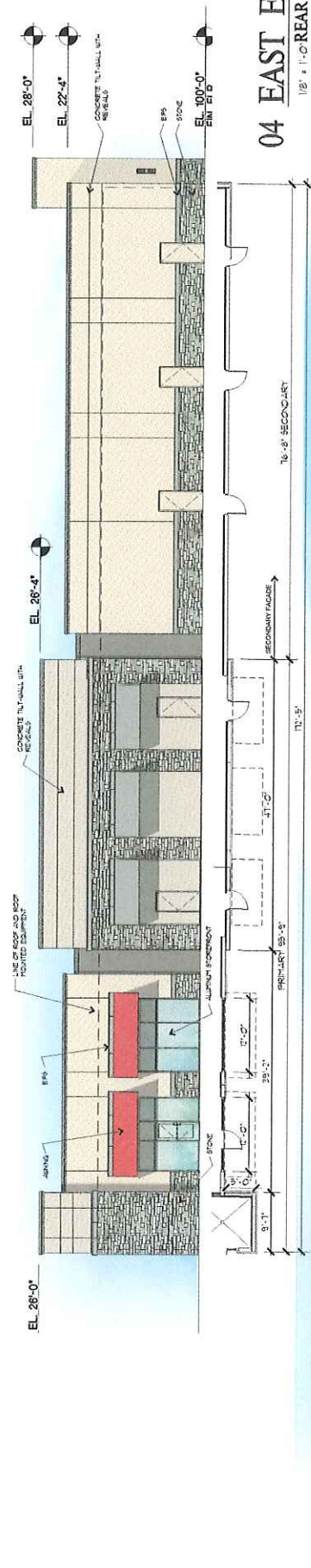
Project No. **17-111**

GRAND PRAIRIE, TEXAS

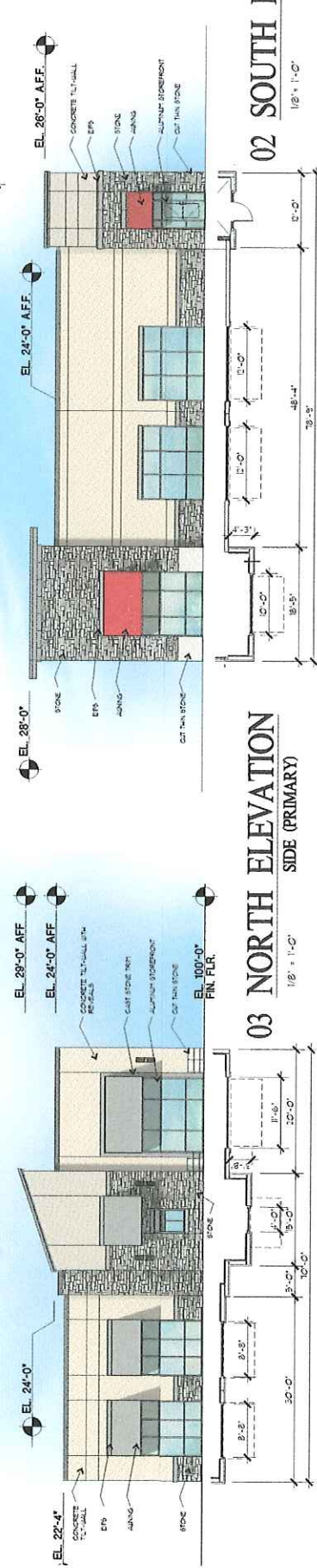
PRELIMINARY PLAN
NOT FOR CONSTRUCTION

APR 25 2017

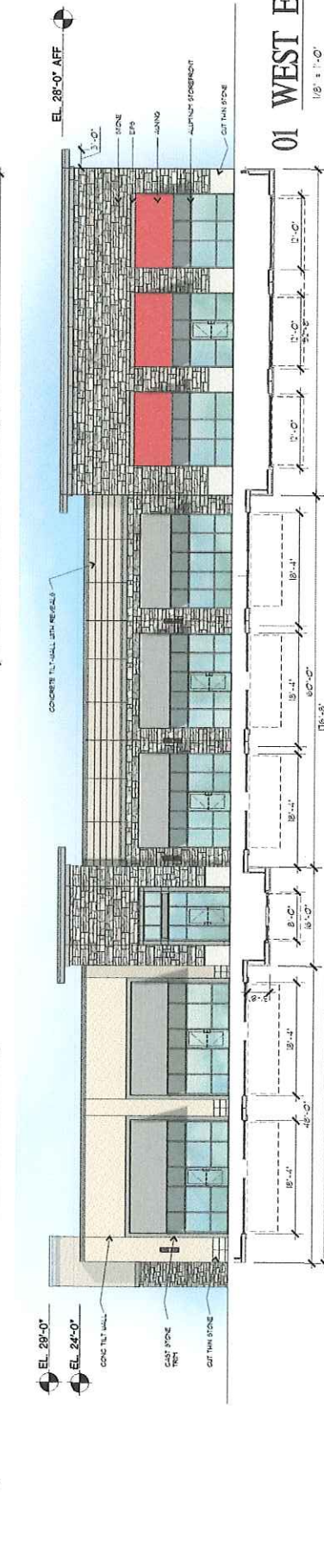
Received



04 EAST ELEVATION
1/8" = 1'-0" REAR (PRIMARY/SECONDARY)



02 SOUTH ELEVATION
1/8" = 1'-0" SIDE (PRIMARY)



01 WEST ELEVATION
1/8" = 1'-0" FRONT (PRIMARY)

NOTES:
ROOF MOUNTED EQUIPMENT WILL NOT BE VISIBLE FROM THE RIGHT OF WAY
ROOF MOUNTED EQUIPMENT WILL NOT BE PLACED LESS THAN 10' OF BUILDING EDGE

TABULATIONS

ELEVATION	OVERALL	AREA OF OPENINGS	REINFORCED AREA	STONE	CAST STONE	CONCRETE	EIFS
NORTH (SIDE)	1,553 sf	264 sf	1,289 sf	306 sf	29.04 sf	755 sf	53.04 sf
SOUTH (SIDE)	1,669 sf	396 sf	1,273 sf	606 sf	38.55 sf	867 sf	53.04 sf
EAST (REAR)	4,409 sf	359 sf	4,050 sf	1,071 sf	26.46 sf	2,769 sf	67.04 sf
WEST (FRONT)	4,538 sf	1,259 sf	3,279 sf	1,787 sf	55.24 sf	1,043 sf	32.26 sf
TOTAL	12,469 sf	2,318 sf	10,151 sf	3,850 sf	127 sf	6,437 sf	737 sf

PRIMARY FACADE:
EVERY 3X HEIGHT = 3024" = 72' FRONTAGE (MIN 60')
HORIZONTAL PROJECTION 15% WALL HEIGHT
15% OF 24' = 3.6' PROVIDED MIN.
3.6' PROVIDED MIN.
LENGTH OF HORIZ PROJECTION 25% OF 48' = 12' REQUIRED
25% OF 48' = 12' PROVIDED MIN.
EVERY 60' FRONTAGE = 15' MIN LENGTH
VERTICAL ARTICULATION 15% HEIGHT
15% OF 24' = 3.6' PROVIDED MIN.
3.6' PROVIDED MIN.
LENGTH OF EXTENSION 25% OF 48' = 12' REQUIRED
25% OF 48' = 12' PROVIDED MIN.



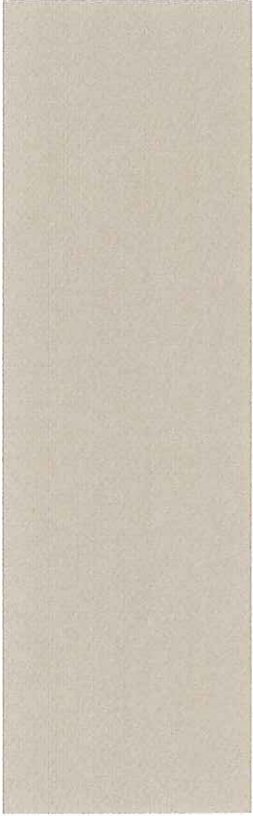
Case Number: SUT 75061 / SUT 75067
Sheet No.
GRAND PRAIRIE RETAIL - 12K BUILDING A
RETAIL AND RESTAURANTS AT
GRAND PRAIRIE CORNERS
NDG HOLDINGS LP
Project No.
17-1411

PRELIMINARY PLAN
NOT FOR CONSTRUCTION

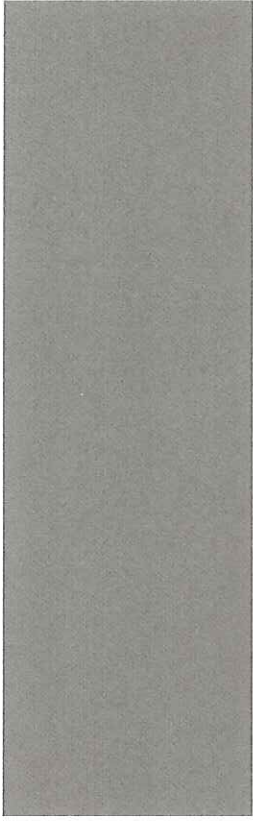
Planning Department

APR 25 2017

Received



PAINT
SHERWIN WILLIAMS SW7503 STICKS AND STONES



PAINT
SHERWIN WILLIAMS SW7505 MANOR HOUSE



PAINT
SHERWIN WILLIAMS SW7030 ANEW GREY



PAINT
SHERWIN WILLIAMS SW7048 URBANE BRONZE



STONE: FRANKLIN SPRINGS BLEND
DISTRIBUTOR: BLACKSON BRICK



CANVAS AWNING
SUNBRELLA - GREY



CANVAS AWNING (MATTRESS FIRM ONLY)
SUNBRELLA - CRIMSON RED

 GSO ARCHITECTS DALLAS, TX 75201 972.385.5851 www.GSOarchitects.com <small>THESE DRAWINGS OR SPECIFICATIONS MAY NOT BE REPRODUCED IN ANY FORM, BY ANY METHOD, FOR ANY PURPOSE, WITHOUT PRIOR WRITTEN CONSENT FROM GSO ARCHITECTS, INC.</small>	Case Number SU170001/SU170507	
	MATERIAL BOARD	
	RETAIL AND RESTAURANTS AT GRAND PRAIRIE CORNERS NDC HOLDINGS, LP	
	Planning Department Project No. 17-011	

APR 25 2017

Received