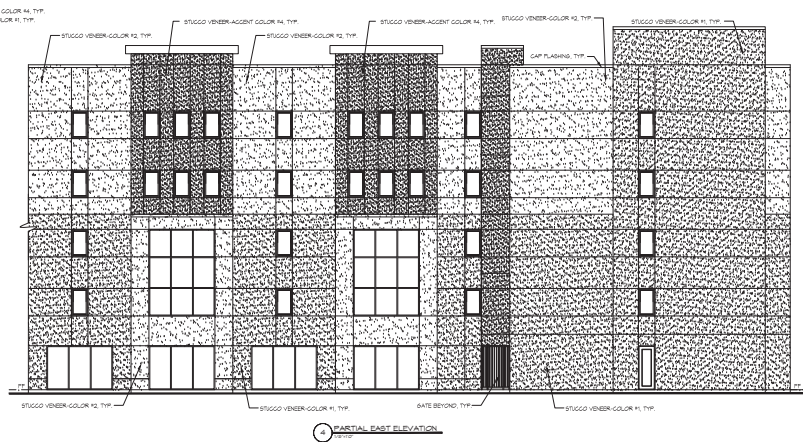


NOTE : EXTERIOR IS 100% STUCCO



190426

THE
GIBSON

N. PIONEER PARKWAY(303)
LOT --- BLOCK ---
GRAND PRAIRIE, TX
DALLAS COUNTY

DATE: 8-20-19
10-1-19

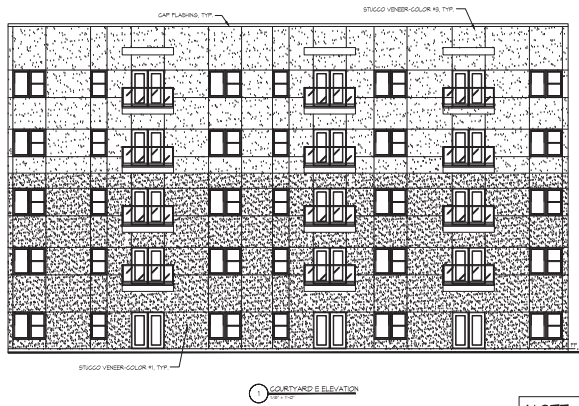
GENERAL NOTES:
1. ALL WORK SHALL BE IN ACCORDANCE WITH THE LATEST EDITIONS OF THE FOLLOWING:
a. THE 2015 INTERNATIONAL RESIDENTIAL CODE (IRC)
b. THE 2015 INTERNATIONAL BUILDING CODE (IBC)
c. THE 2015 INTERNATIONAL PLUMBING CODE (IPC)
d. THE 2015 INTERNATIONAL MECHANICAL AND ELECTRICAL CODE (IMC/IEC)
e. THE 2015 INTERNATIONAL FIRE AND SAFETY CODE (IFSC)
f. THE 2015 INTERNATIONAL ENERGY CODE (IEC)
g. THE 2015 INTERNATIONAL SWEET'S BUILDING DIRECTORY (SBD)
h. THE 2015 INTERNATIONAL SWEET'S ELECTRICAL DIRECTORY (SED)
i. THE 2015 INTERNATIONAL SWEET'S MECHANICAL AND PLUMBING DIRECTORY (SMPD)
j. THE 2015 INTERNATIONAL SWEET'S FIRE AND SAFETY DIRECTORY (SFD)
k. THE 2015 INTERNATIONAL SWEET'S ENERGY DIRECTORY (SED)
l. THE 2015 INTERNATIONAL SWEET'S BUILDING MATERIALS DIRECTORY (SBMD)
m. THE 2015 INTERNATIONAL SWEET'S ELECTRICAL MATERIALS DIRECTORY (SEMD)
n. THE 2015 INTERNATIONAL SWEET'S MECHANICAL AND PLUMBING MATERIALS DIRECTORY (SMPMD)
o. THE 2015 INTERNATIONAL SWEET'S FIRE AND SAFETY MATERIALS DIRECTORY (SFDMD)
p. THE 2015 INTERNATIONAL SWEET'S ENERGY MATERIALS DIRECTORY (SEMDMD)
q. THE 2015 INTERNATIONAL SWEET'S BUILDING MATERIALS DIRECTORY (SBMDMD)
r. THE 2015 INTERNATIONAL SWEET'S ELECTRICAL MATERIALS DIRECTORY (SEMDMD)
s. THE 2015 INTERNATIONAL SWEET'S MECHANICAL AND PLUMBING MATERIALS DIRECTORY (SMPMDMD)
t. THE 2015 INTERNATIONAL SWEET'S FIRE AND SAFETY MATERIALS DIRECTORY (SFDMDMD)
u. THE 2015 INTERNATIONAL SWEET'S ENERGY MATERIALS DIRECTORY (SEMDMDMD)
v. THE 2015 INTERNATIONAL SWEET'S BUILDING MATERIALS DIRECTORY (SBMDMDMD)
w. THE 2015 INTERNATIONAL SWEET'S ELECTRICAL MATERIALS DIRECTORY (SEMDMDMD)
x. THE 2015 INTERNATIONAL SWEET'S MECHANICAL AND PLUMBING MATERIALS DIRECTORY (SMPMDMDMD)
y. THE 2015 INTERNATIONAL SWEET'S FIRE AND SAFETY MATERIALS DIRECTORY (SFDMDMDMD)
z. THE 2015 INTERNATIONAL SWEET'S ENERGY MATERIALS DIRECTORY (SEMDMDMDMD)

SHEET Title:
EXTERIOR
ELEVATIONS
1/8" = 1'0"

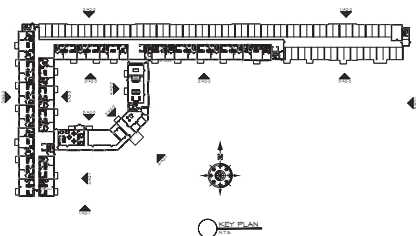


CASE NO.:
Z191001/5191005

SHEET No.:
A2-1



NOTE : EXTERIOR IS 100% STUCCO



190426

THE
GIBSON

N. PIONEER PARKWAY(303)
LOT ---- BLOCK ----
GRAND PRAIRIE, TX
DALLAS COUNTY

DATE: 9-20-19
10-1-19

GENERAL NOTES:
1. ALL DIMENSIONS ARE IN FEET AND INCHES. DIMENSIONS IN PARENTHESES ARE IN METERS.
2. ALL FINISHES ARE TO BE AS SHOWN ON THE DRAWINGS.
3. ALL MATERIALS AND METHODS OF CONSTRUCTION SHALL BE AS APPROVED BY THE CITY OF GRAND PRAIRIE.
4. ALL WORK SHALL BE IN ACCORDANCE WITH THE CITY OF GRAND PRAIRIE ORDINANCES.
5. ALL WORK SHALL BE IN ACCORDANCE WITH THE CITY OF GRAND PRAIRIE SPECIFICATIONS.
6. ALL WORK SHALL BE IN ACCORDANCE WITH THE CITY OF GRAND PRAIRIE STANDARDS.
7. ALL WORK SHALL BE IN ACCORDANCE WITH THE CITY OF GRAND PRAIRIE REQUIREMENTS.
8. ALL WORK SHALL BE IN ACCORDANCE WITH THE CITY OF GRAND PRAIRIE REGULATIONS.
9. ALL WORK SHALL BE IN ACCORDANCE WITH THE CITY OF GRAND PRAIRIE ORDINANCES.
10. ALL WORK SHALL BE IN ACCORDANCE WITH THE CITY OF GRAND PRAIRIE SPECIFICATIONS.

SHEET TITLE:

EXTERIOR
ELEVATIONS
1/8" = 1'0"



2215 PRAIRIE AVENUE, SUITE 100, GRAND PRAIRIE, TEXAS 75050
817.415.1000 FAX 817.415.1001

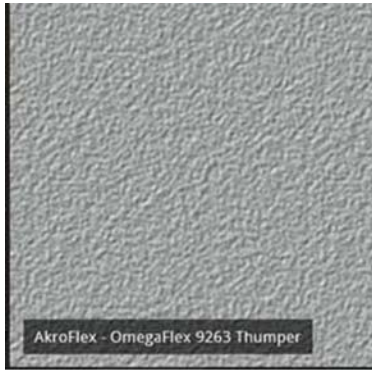
ARCHITECTS

© COPYRIGHT 2019. ALL RIGHTS RESERVED.

SHEET No.:

A2-3

CASE NO.:
Z191001/S191005



STUCCO #1



STUCCO #2

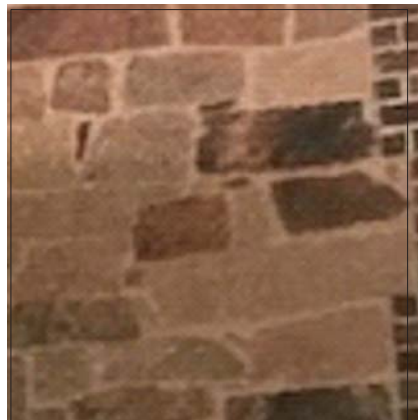


STUCCO #3



STUCCO-ACCENT #4

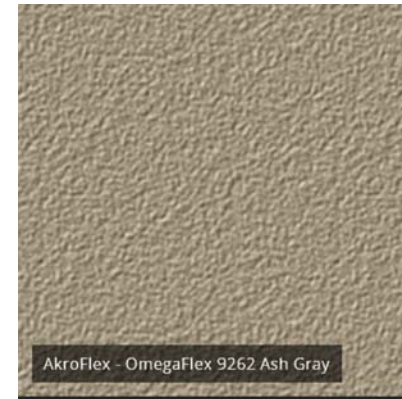
APARTMENTS



SADDLEWOOD QUARRY CHOP
CULTURED STONE



STUCCO #1



STUCCO-ACCENT #2

RETAIL



190426

THE
GIBSON

N. PIONEER PARKWAY(309)
LOT ---- BLOCK ----
GRAND PRAIRIE, TX
DALLAS COUNTY

DATE: 8-20-18
10-1-19

GENERAL NOTES:
1. ALL MATERIALS AND METHODS OF CONSTRUCTION SHALL BE IN ACCORDANCE WITH THE LATEST EDITIONS OF THE BUILDING CODES AND STANDARDS OF THE STATE OF TEXAS.
2. ALL MATERIALS AND METHODS OF CONSTRUCTION SHALL BE IN ACCORDANCE WITH THE LATEST EDITIONS OF THE BUILDING CODES AND STANDARDS OF THE STATE OF TEXAS.
3. ALL MATERIALS AND METHODS OF CONSTRUCTION SHALL BE IN ACCORDANCE WITH THE LATEST EDITIONS OF THE BUILDING CODES AND STANDARDS OF THE STATE OF TEXAS.
4. ALL MATERIALS AND METHODS OF CONSTRUCTION SHALL BE IN ACCORDANCE WITH THE LATEST EDITIONS OF THE BUILDING CODES AND STANDARDS OF THE STATE OF TEXAS.
5. ALL MATERIALS AND METHODS OF CONSTRUCTION SHALL BE IN ACCORDANCE WITH THE LATEST EDITIONS OF THE BUILDING CODES AND STANDARDS OF THE STATE OF TEXAS.
6. ALL MATERIALS AND METHODS OF CONSTRUCTION SHALL BE IN ACCORDANCE WITH THE LATEST EDITIONS OF THE BUILDING CODES AND STANDARDS OF THE STATE OF TEXAS.
7. ALL MATERIALS AND METHODS OF CONSTRUCTION SHALL BE IN ACCORDANCE WITH THE LATEST EDITIONS OF THE BUILDING CODES AND STANDARDS OF THE STATE OF TEXAS.
8. ALL MATERIALS AND METHODS OF CONSTRUCTION SHALL BE IN ACCORDANCE WITH THE LATEST EDITIONS OF THE BUILDING CODES AND STANDARDS OF THE STATE OF TEXAS.
9. ALL MATERIALS AND METHODS OF CONSTRUCTION SHALL BE IN ACCORDANCE WITH THE LATEST EDITIONS OF THE BUILDING CODES AND STANDARDS OF THE STATE OF TEXAS.
10. ALL MATERIALS AND METHODS OF CONSTRUCTION SHALL BE IN ACCORDANCE WITH THE LATEST EDITIONS OF THE BUILDING CODES AND STANDARDS OF THE STATE OF TEXAS.

SHEET Title:
MATERIAL
BOARD



2018 PIONEER PARKWAY, SUITE 100, GRAND PRAIRIE, TX 75050
214.350.1000
V10 ARCHITECTS

CASE NO.:
Z191001/5191005

SHEET No.: