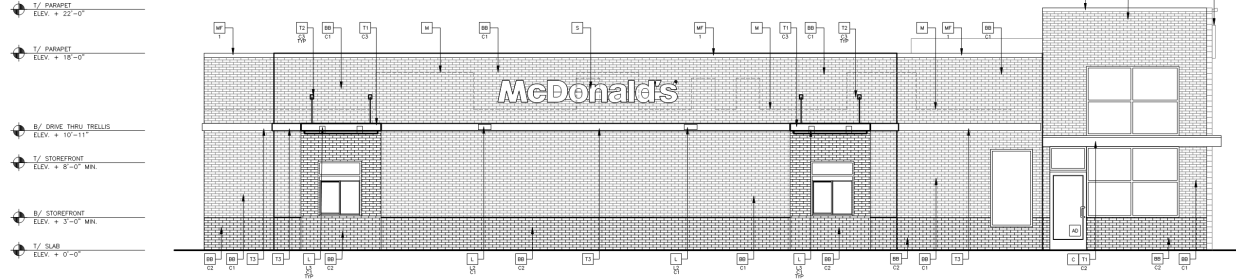
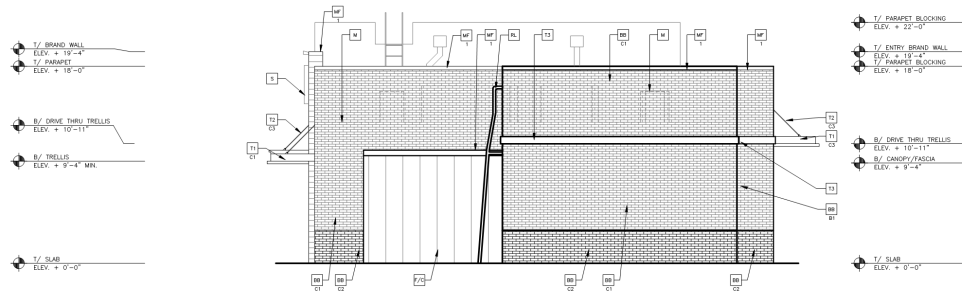


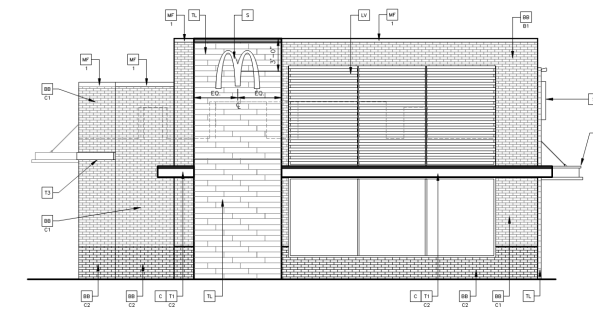
1 EXTERIOR ELEVATION SCALE 3/16" = 1'-0"



2 EXTERIOR ELEVATION SCALE 3/16" = 1'-0"



3 EXTERIOR ELEVATION SCALE 3/16" = 1'-0"



4 EXTERIOR ELEVATION SCALE 3/16" = 1'-0"

CASE NUMBER: SU190501

- AD NEW ADA SIGNAGE MOUNT AT 60" AFF TO CENTER OF SIGN PROVIDE 1 ON INSIDE AND OUTSIDE
- BM BREAK METAL - COLOR TO MATCH STOREFRONT
- BR MODULAR FACEBRICK
- CT TYPE: BELDEN BRICK - 8531
C2 = BELDEN BRICK - 8621
- C ALUMINUM CANOPY FASCIA SYSTEM
COLOR: WHITE
- CU OUTSIDE CORNER STRIPS
RONDEC R0102TSDA BY SCHLUTER SYSTEMS
ALUMINUM HEIGHT 10MM COLOR: DARK ANTHRACITE
COMMERCIALSUPPORT@SCHLUTER.COM, (800) 267-0817
- D HOLLOW METAL DOOR PAINT TO MATCH
COLOR OF SURROUNDING MATERIAL

- L LIGHT FIXTURE - SEE ELECTRICAL
- XX TYPE:
L2 = DOWN ONLY SCONCE
L3 = RECESSED DOWN FIXTURE
COLOR:
C1 = SILVER
C2 = WHITE
- LV METAL LOUVER PANEL BY TRELLIS VENDOR
COLOR: CITYSCAPE
- PV EXISTING METAL FREEZER/COOLER
COLOR: FARVIEW TAUPÉ HC-85 BY BENJAMIN MOORE

- LV ACCENT LIGHTING - SEE ELECTRICAL
LED LIGHT:
L2 = DOWN ONLY SCONCE
L3 = RECESSED DOWN FIXTURE
COLOR:
C1 = SILVER
C2 = WHITE
- W METAL FASCIA (COLOR: CITYSCAPE) SEE 4/A3.2
TYPE:
1 = PRE-FAB ANCHOR-TITE FASCIA
2 = PRE-FAB CUSTOM ARCADE FASCIA
- ML METAL LETTERING - BY OTHERS
TYPE:
1 = 'WELCOME' - COLOR: SILVER
2 = 24" H x 3/4" THICK METAL ARCH
COLOR: PANTONE 123C

- NL EXISTING ROOF LADDER PAINT TO MATCH
BASE BUILDING
- S McDONALD'S SIGNAGE BY OTHERS - UNDER
SEPARATE PERMIT.
- TT ALUMINUM TRELLIS SYSTEM
COLOR:
C1 = CITYSCAPE
C2 = WHITE
C3 = CHARCOAL
C4 = GOLD
- TZ ALUMINUM TRELLIS TIE-BACK
SYSTEM
COLOR:
C3 = CHARCOAL

- TZ ALUMINUM TRELLIS 2" x 8"
WALL FASCIA SYSTEM
COLOR: CITYSCAPE
- W NEW STOREFRONT AND GLAZING
1 = NEW STOREFRONT AND GLAZING -
SEE ASSEMBLY NOTES
- CB EXISTING CANE BOLT AND HARDWARE TO
REMAIN. PAINT TO MATCH IRON MOUNTAIN
2134-30 BY BENJAMIN MOORE.
- SP EXISTING STEEL POST AND HARDWARE TO
REMAIN. PAINT TO MATCH IRON MOUNTAIN
2134-30 BY BENJAMIN MOORE.
- M EXISTING ROOF EQUIPMENT TO REMAIN.
- E EXISTING METAL GATE TO REMAIN. PAINT
TO MATCH IRON MOUNTAIN 2134-30 BY
BENJAMIN MOORE.

ARCADES

TILE BY EUROWEST
E-WOOD COLLECTION-89
BLACK



BASE BUILDING PAINT

BELDEN BRICK
8531



ACCENT PAINT

(DRIVE-THRU)
BELDEN BRICK
8621



ELEVATION:	METAL (SF):	%	BRICK (SF):	%	TILE (SF):	%	ACCENT BRICK (SF):	%	TOTAL (SF):
Front	88	14	329	53	178	29	26	4	621
Rear	142	19	517	68	11	1	87	11	757
DT	108	7	1053	70	9	1	336	22	1506
Non-DT	220	16	848	61	145	10	187	13	1400

PROJECT NAME
McDonald's USA, LLC

PROJECT ADDRESS
 513 MAIN STREET, SUITE 300
 FORT WORTH, TEXAS 76102
 (817) 850-0453 & (817) 705-5987

PROJECT NUMBER
 SU190501

PROJECT DATE
 05/19/2019

PROJECT DESCRIPTION
 McDONALD'S MAJOR REMODEL

EXISTING CMR WALLS & STEEL ROOF JOIST

SITE ID
 040-1234

DATE
 05/19/2019

A2.0