



# Grand Prairie

PLANNING UPDATE

MASTER TRANSPORTATION PLAN ★ COMPREHENSIVE PLAN



## PLANNING UPDATE

# Master Transportation Plan

*A citywide plan that will be coordinated with other locally adopted city, county and agency plans, and reflected in NCTCOG planning initiatives. The identification of the location, alignment and preservation of needed right-of-way to support 20-year mobility needs and investments.*





## PLANNING UPDATE

# Comprehensive Plan

*An update to future land use and demographic assumptions for framing consideration of needed community enhancements. Will focus on five special areas of high intensity and/or new growth to update plan elements.*



# Comprehensive Plan Chapters

- **Chapter 1** – Community Snapshot
- **Chapter 2** – Issue Identification and Plan Goals
- **Chapter 3** – Future Land Use and Thoroughfare Plan
- **Chapter 4** – Healthy Community
- **Chapter 5** – Smart Community
- **Chapter 6** – Sustainable Community
- **Chapter 7** – Focus Areas
- **Chapter 8** - Implementation

## PLANNING UPDATE

# Issue Identification

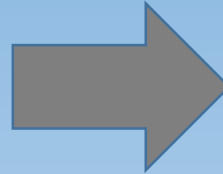
### Public Input

Stakeholder Interviews

Online Survey

Community Events and Facilities

- *Summer Reading Kick-off*
- *Juneteenth Celebration*
- *Airhogs Game*
- *Chamber of Commerce Luncheon*
- *Town Hall Meeting*
- *YMCA South GP*



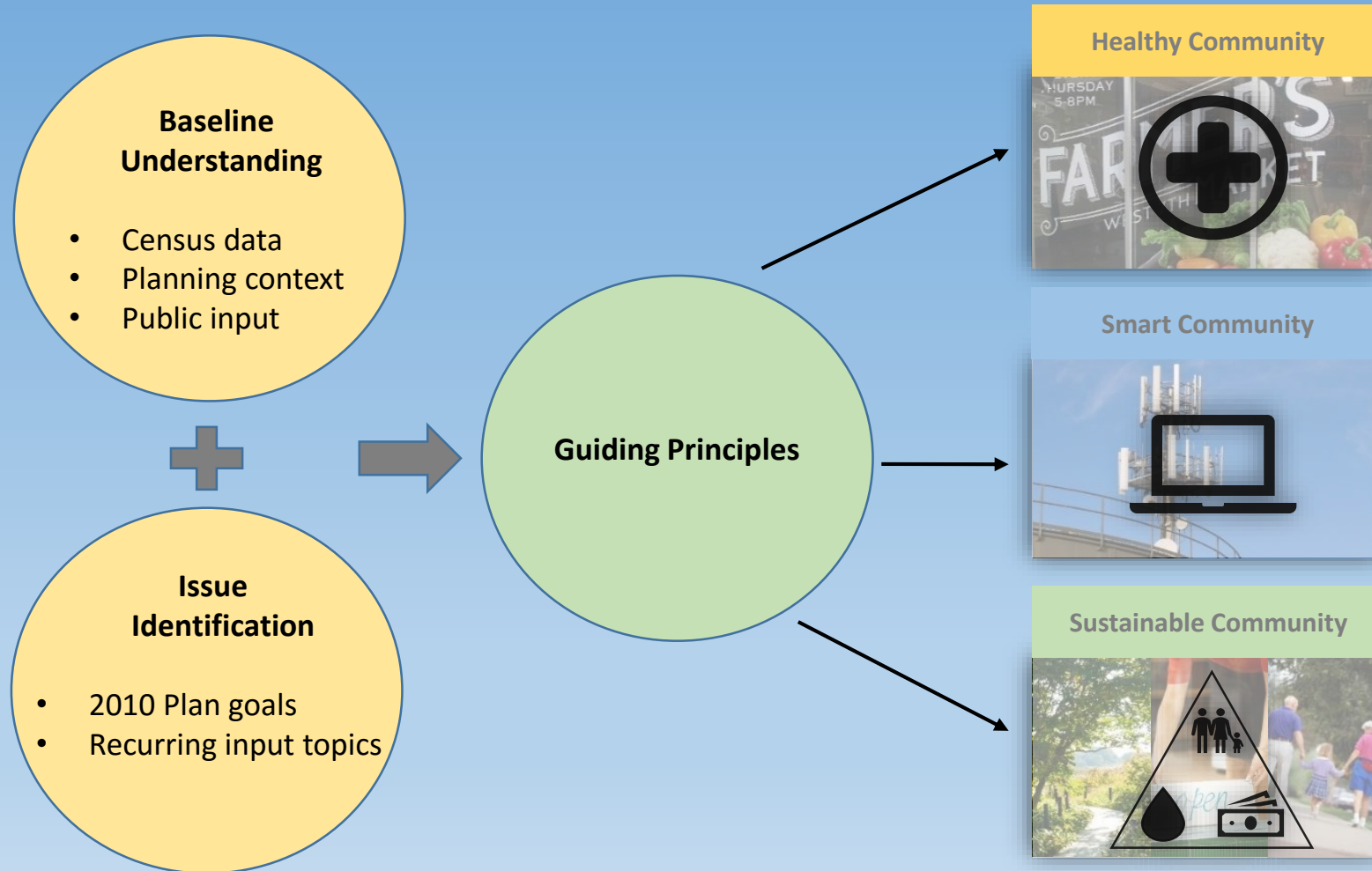
### Key Issues

- More destination retail/commercial and entertainment options
- More housing options
- More multimodal transportation options
- Increase in traffic and congestion with development activity
- More sit-down dining and healthy food choices
- Timing of infrastructure needs for southern area of the City



## PLANNING UPDATE

# Guiding Principles

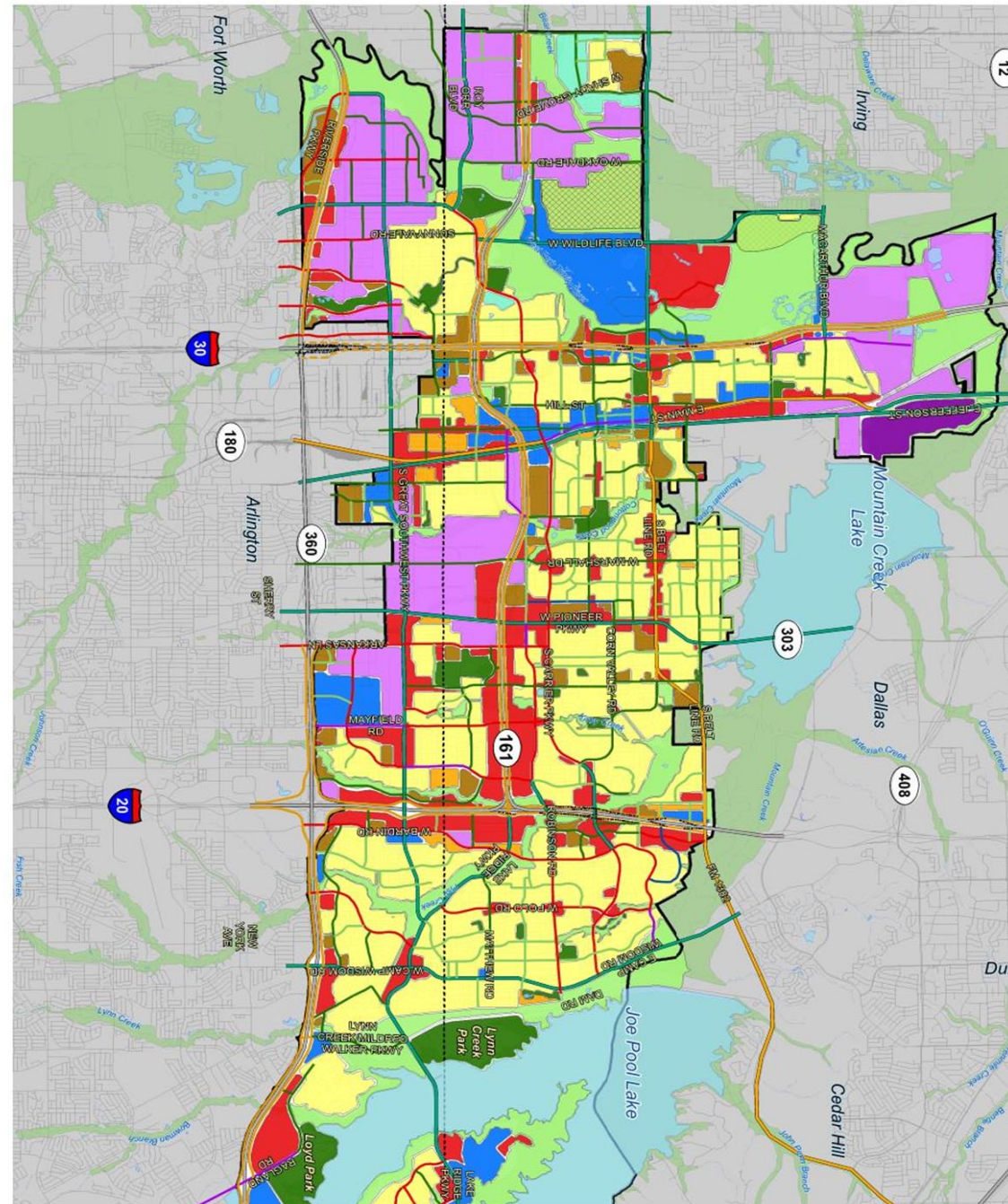


## PLANNING UPDATE

# Future Land Use Plan

## Key Changes

- Showed potential residential, retail/commercial/office and Mixed Use development within the Trinity River floodplain
- Added retail/commercial/office along SH 360 (north of IH 30)
- Added retail/commercial/office and Mixed Use along IH 30



## Future Land Use

### Land Uses

- Low Density Residential
- Medium Density Residential
- High Density Residential
- Mixed Residential
- Mixed Use
- Commercial/Retail/Office
- Heavy Industrial
- Light Industrial
- Parks and Recreation
- Open Space/Drainage

### Potential Floodplain Reclamation Subcategories

- Medium Density Residential
- Mixed Use
- Commercial/Retail/Office
- Grand Prairie City Limits
- County
- Waterbodies
- 1-Percent Flood Risk Zones (FEMA)
- Railroads
- River/Creeks

### Note:

A comprehensive plan shall not constitute zoning district regulations or establish zoning district boundaries.



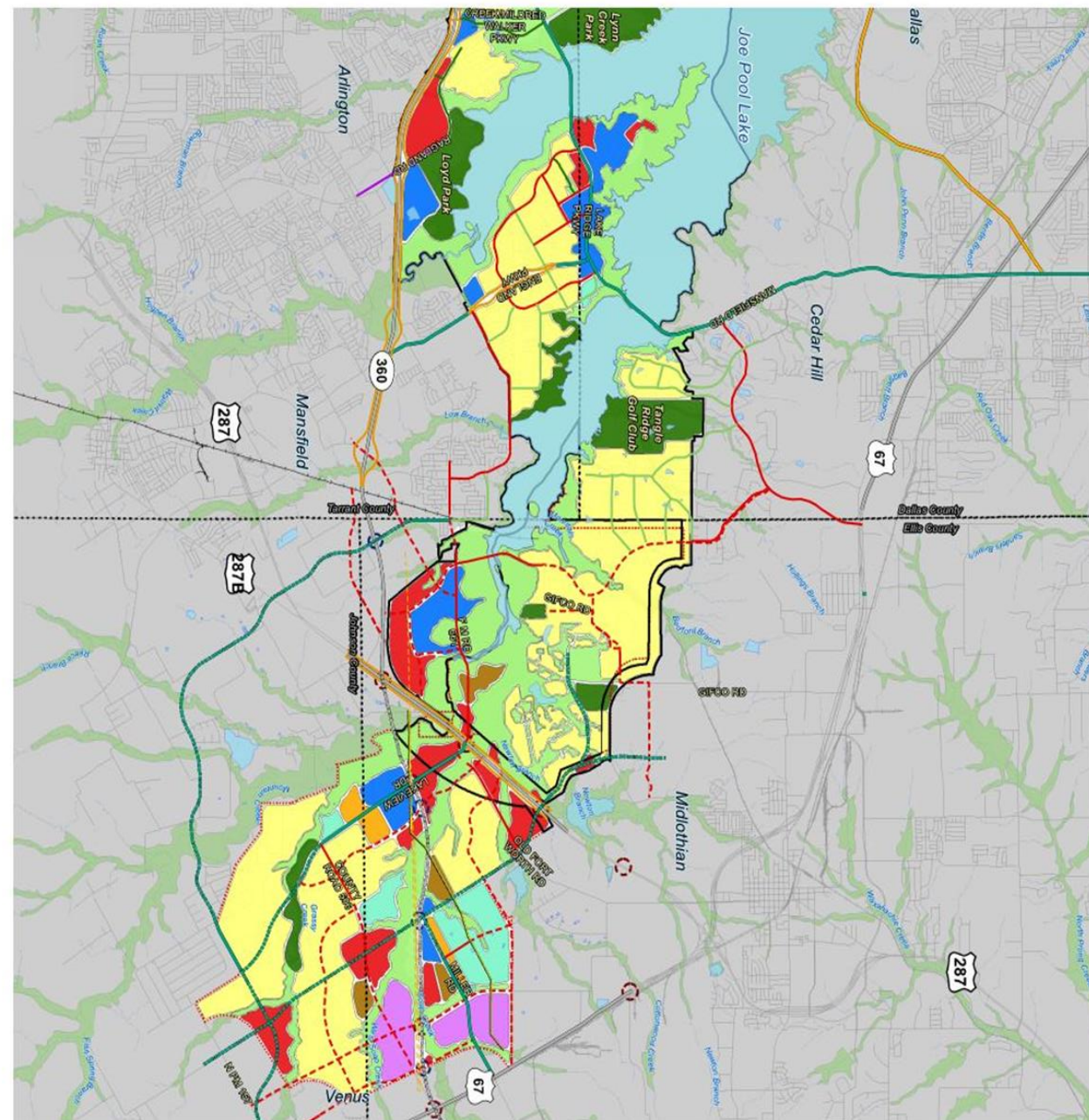


## PLANNING UPDATE

# Future Land Use Plan

## Key Changes

- Expanded Mixed Use on Mayfield Rd and SH 360
- Added Mixed Use on IH 20
- Updated land uses and entitlements along SH 161
- Reconfigured land uses within Southern Sector to align with Thoroughfare Plan



## Future Land Use

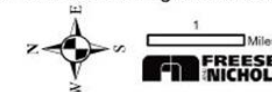
### Land Uses

- Low Density Residential
- Medium Density Residential
- High Density Residential
- Mixed Residential
- Mixed Use
- Commercial/Retail/Office
- Heavy Industrial
- Light Industrial
- Parks and Recreation
- Open Space/Drainage

### Potential Floodplain Reclamation Subcategories

- Medium Density Residential
- Mixed Use
- Commercial/Retail/Office
- Grand Prairie City Limits
- County
- Waterbodies
- 1-Percent Flood Risk Zones (FEMA)
- Railroads
- River/Creeks

Note:  
A comprehensive plan shall not constitute zoning district regulations or establish zoning district boundaries.



FREESE NICHOLS



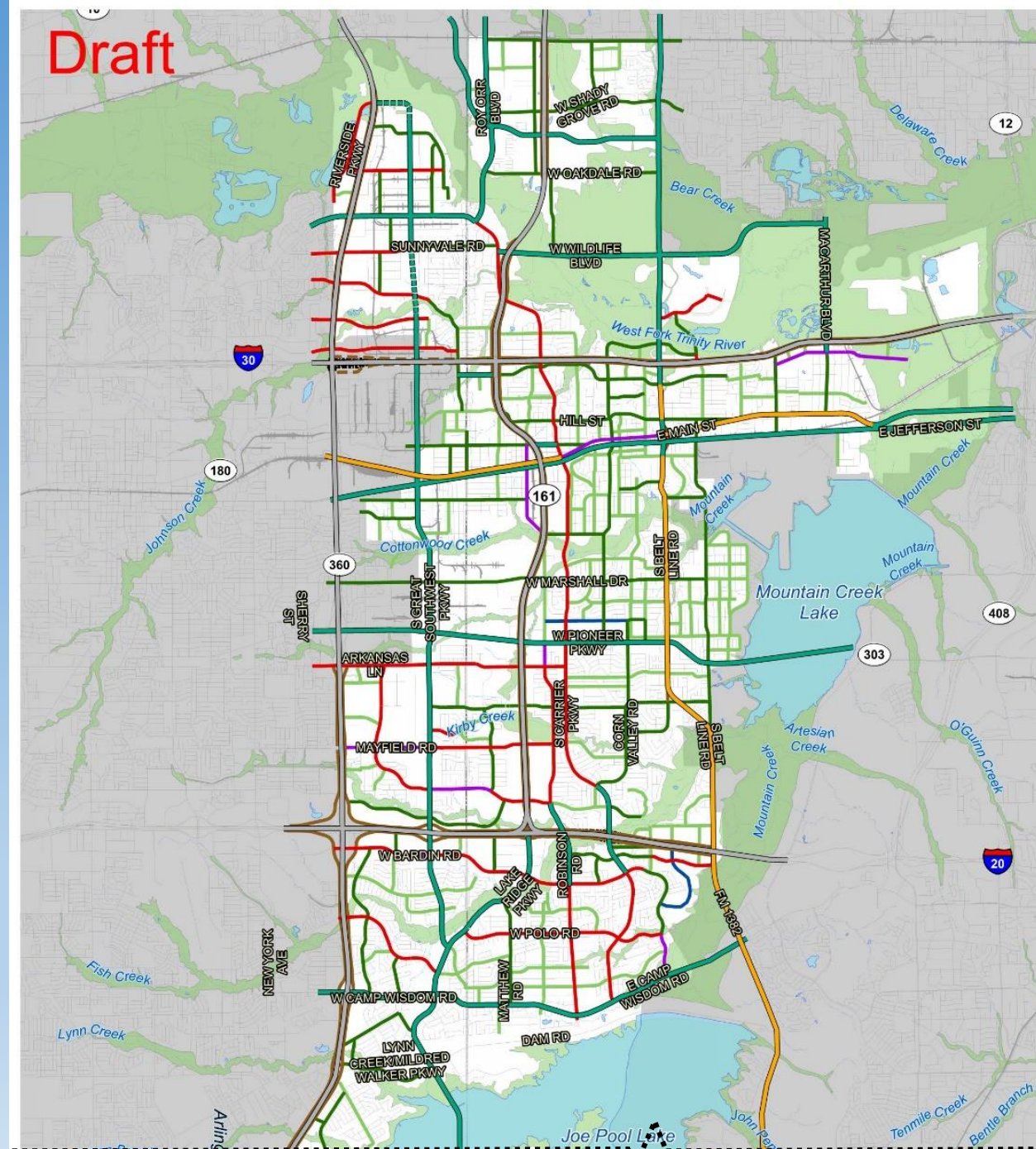
## PLANNING UPDATE

# Thoroughfare Plan

## Key Changes

North of Joe Pool Lake:

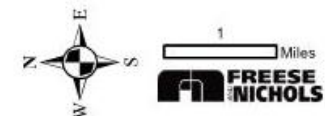
- Minor changes to reflect current development occurrences



## Thoroughfare Plan

### Road Classifications

- Highway
- P7U: Principal Arterial, 7 Lane, Undivided
- P6D: Principal Arterial, 6 Lane, Divided
- P4D: Principal Arterial, 4 Lane, Divided
- P3U: Principal Arterial, 3 Lane, Undivided
- M5U: Minor Arterial, 5 Lane, Undivided
- M4U: Minor Arterial, 4 Lane, Undivided
- M3U: Minor Arterial, 3 Lane, Undivided
- C2U: Collector, 2 Lane, Undivided
- L2U: Local Street, 2 Lane, Undivided
- (Dashed for Proposed Alignment)
- ⬢ Grand Prairie City Limits
- ⬢ County
- ⬢ Waterbodies
- ⬢ 1-Percent Flood Risk Zones (FEMA)
- ⬢ Railroads





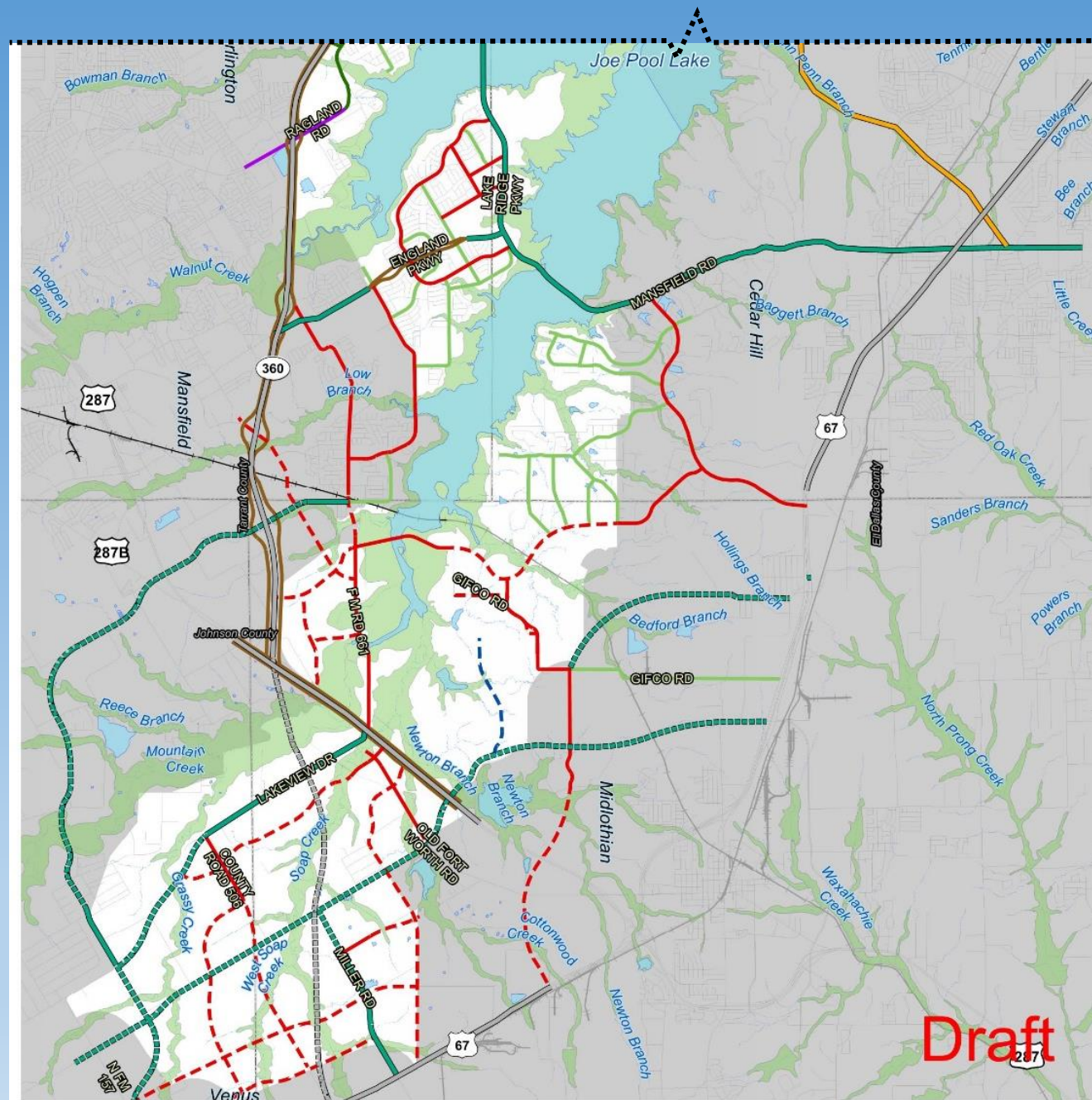
## PLANNING UPDATE

# Thoroughfare Plan

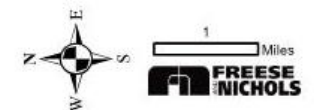
## Key Changes

South of Joe Pool Lake:

- Incorporated extension of SH 360 between US 287 and US 67
- Reconfigured Thoroughfare Plan roadway network to align with proposed future land uses within Southern Sector
- Considers emerging plans in adjacent cities



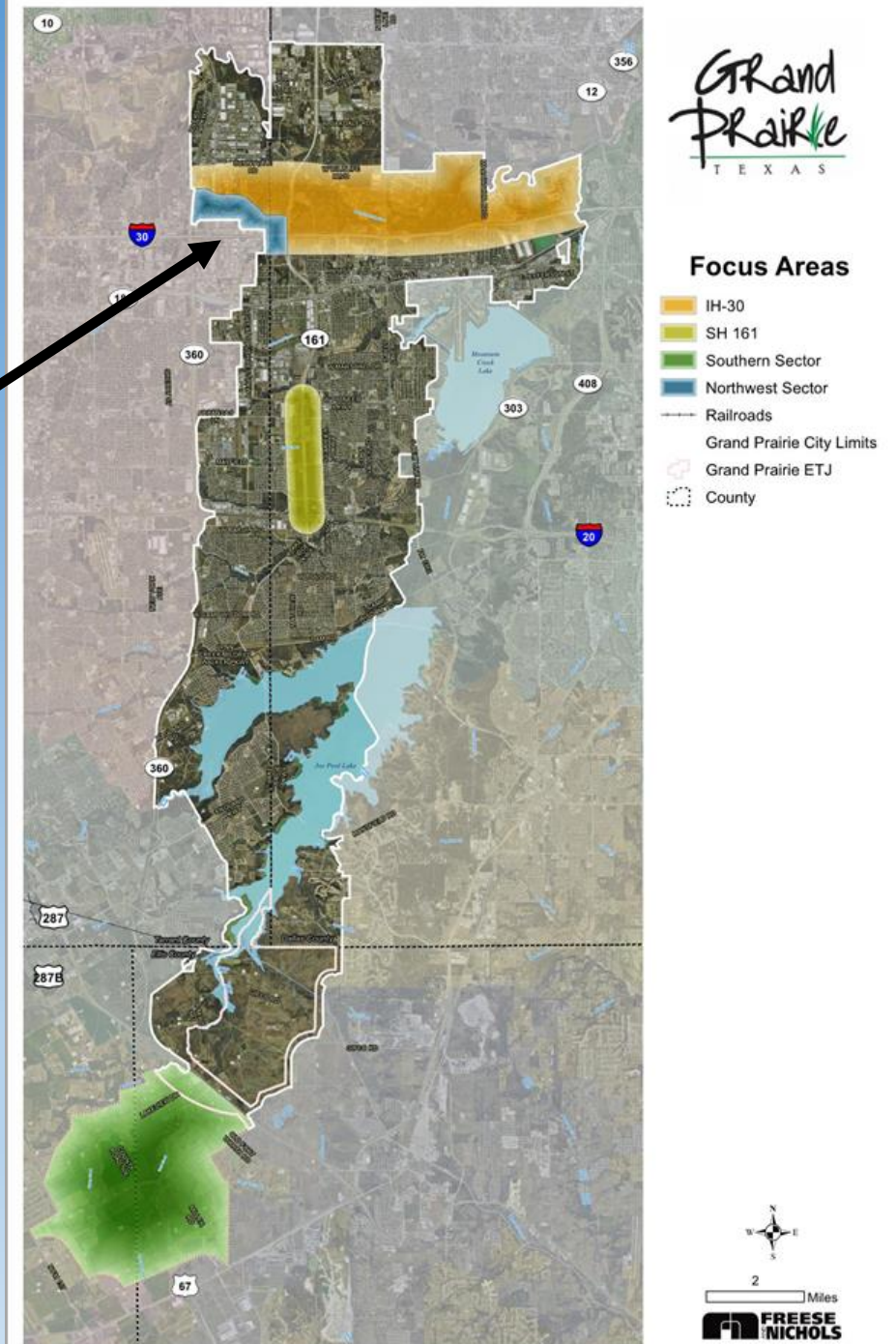
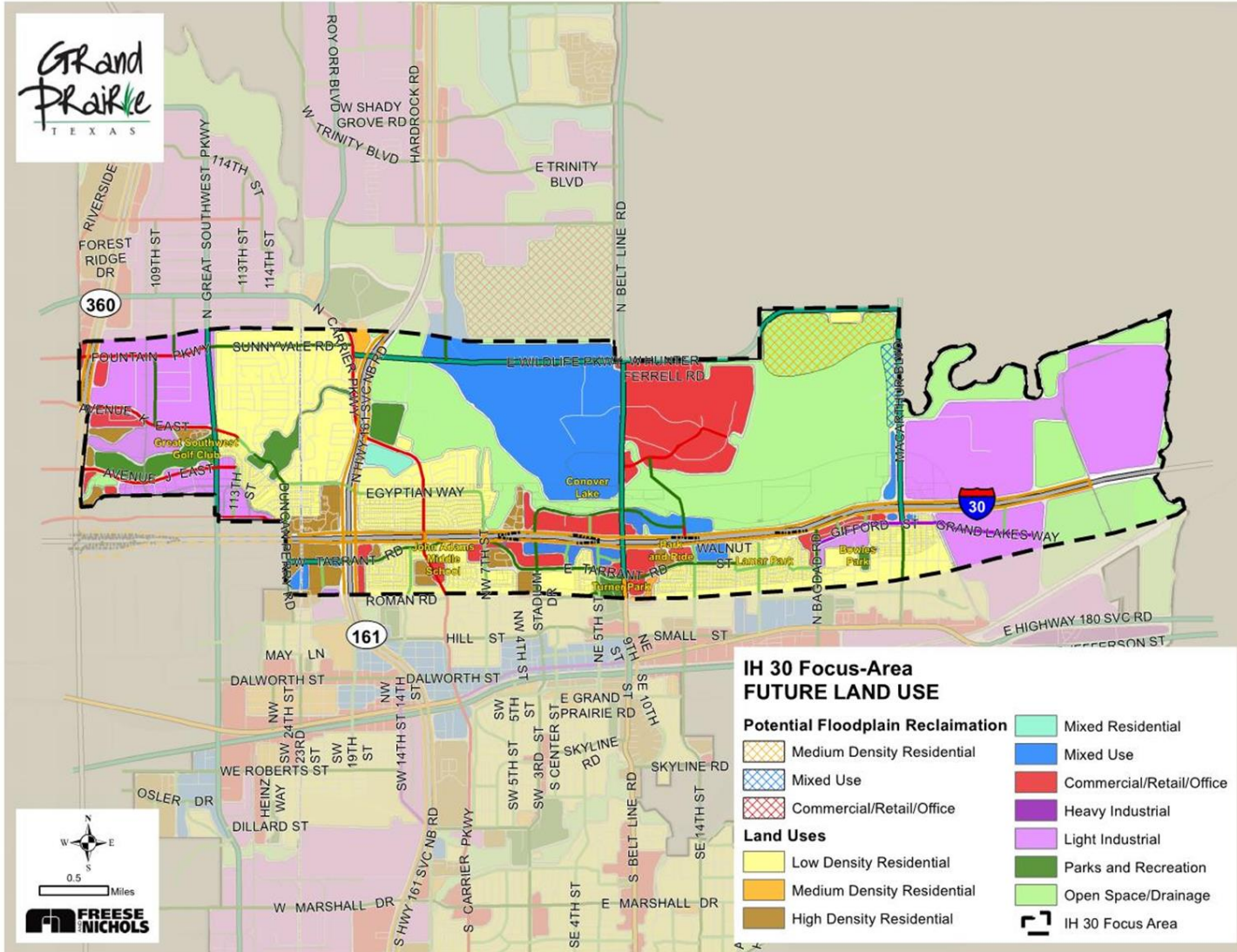
Thoroughfare Plan	
Road Classifications	
	Highway
	P7U: Principal Arterial, 7 Lane, Undivided
	P6D: Principal Arterial, 6 Lane, Divided
	P4D: Principal Arterial, 4 Lane, Divided
	P3U: Principal Arterial, 3 Lane, Undivided
	M5U: Minor Arterial, 5 Lane, Undivided
	M4U: Minor Arterial, 4 Lane, Undivided
	M3U: Minor Arterial, 3 Lane, Undivided
	C2U: Collector, 2 Lane, Undivided
	L2U: Local Street, 2 Lane, Undivided
	(Dashed for Proposed Alignment)
	Grand Prairie City Limits
	County
	Waterbodies
	1-Percent Flood Risk Zones (FEMA)
	Railroads





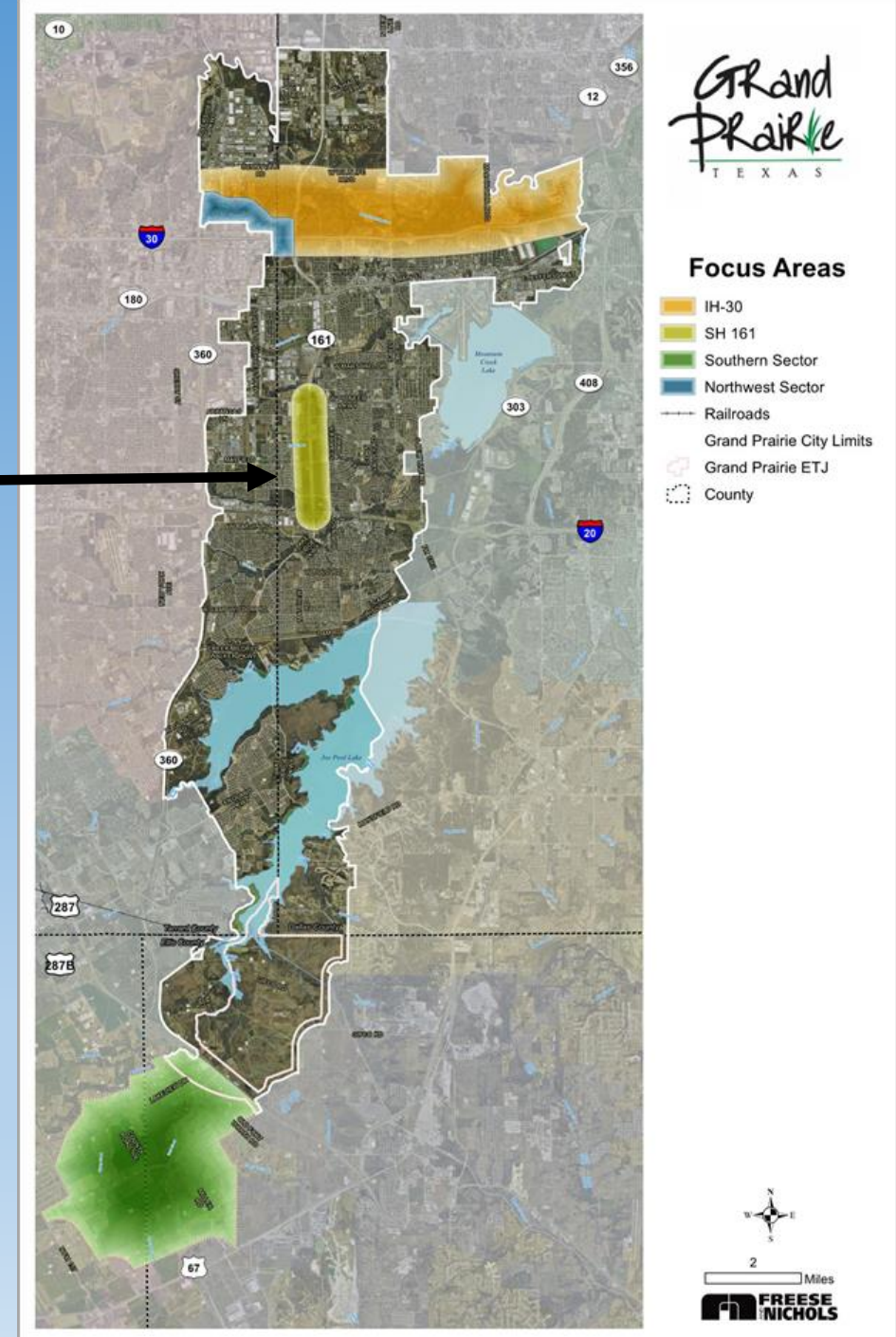
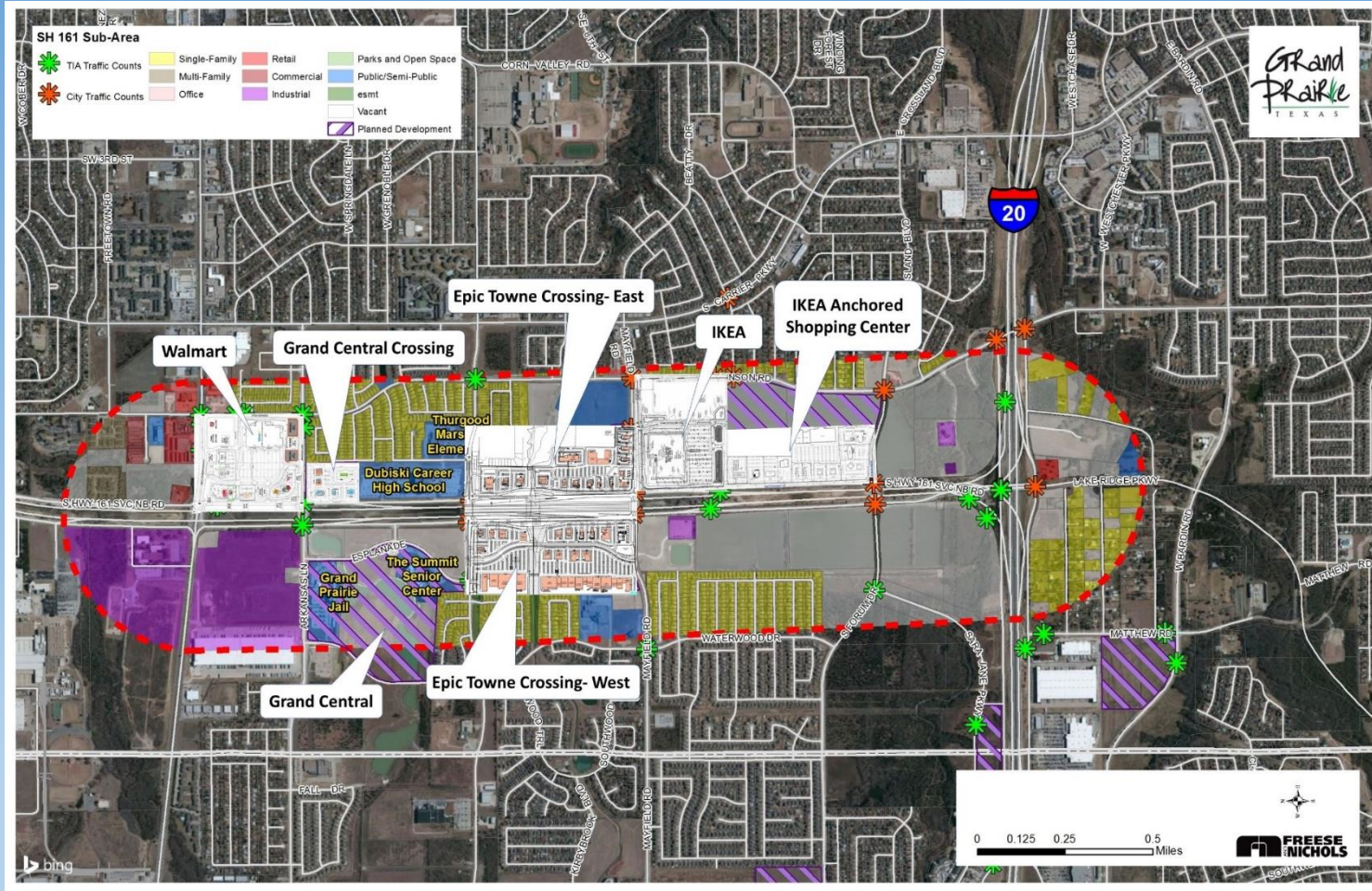
# PLANNING UPDATE

## Focus Area (IH 30 and Northwest Sector)



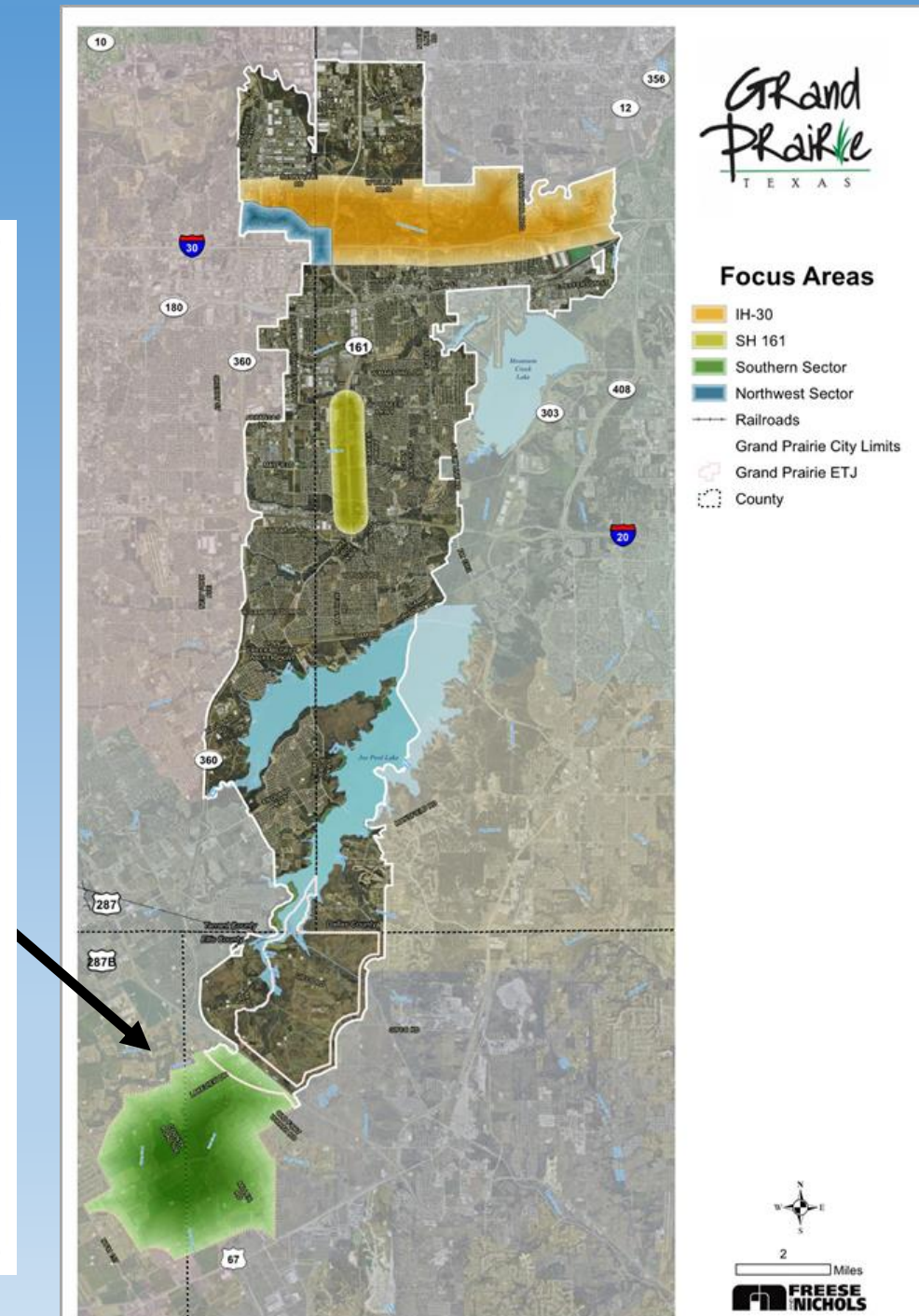
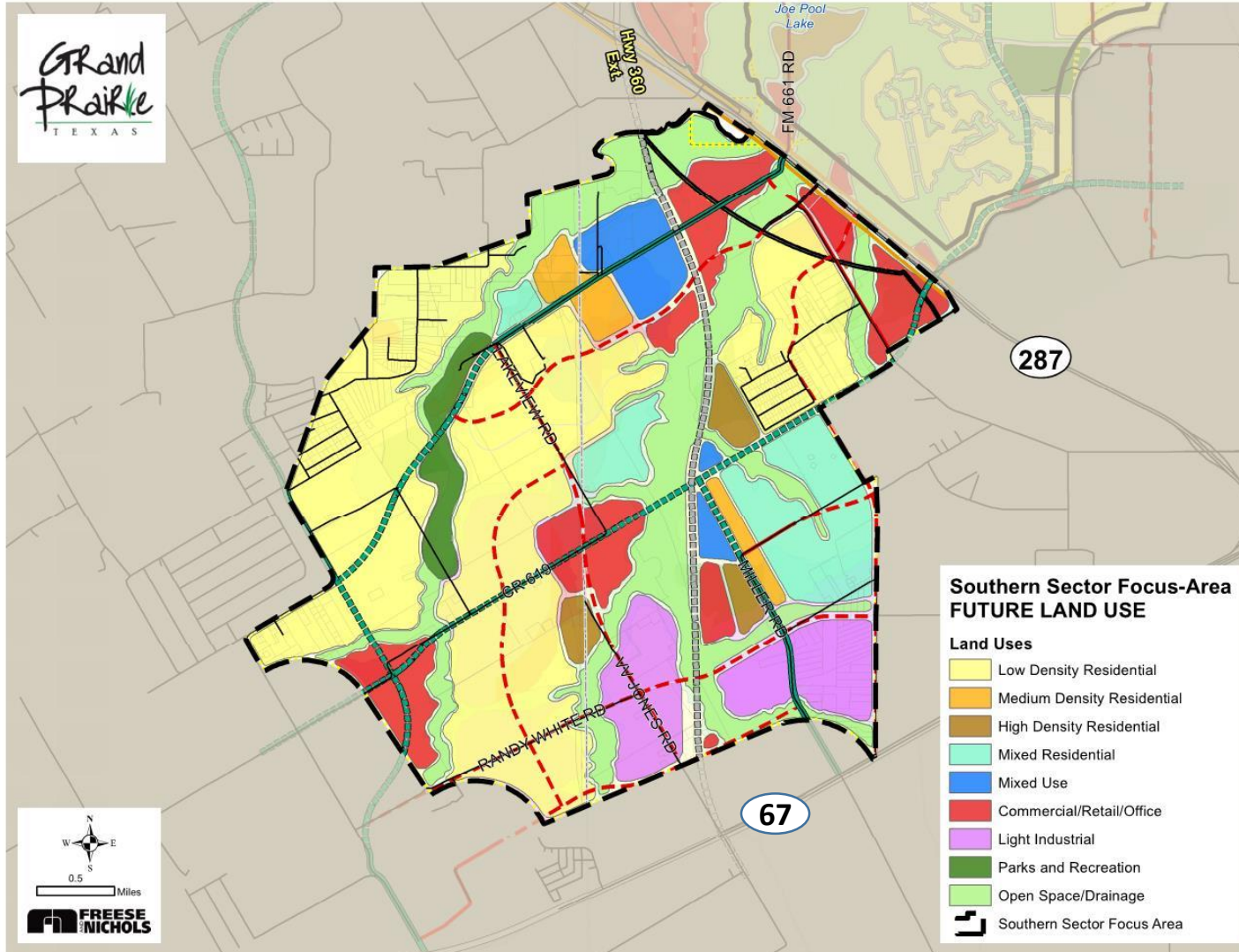


# Focus Area (SH 161)





# Focus Area (Southern Sector)



















# PLANNING UPDATE

## Implementation Plan

### City-wide Implementation Matrix

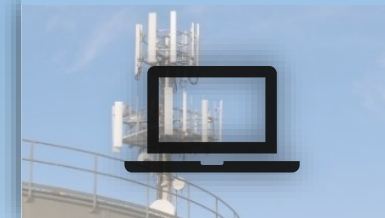
Table 24. City-wide Implementation Matrix

Strategies				Timeframe
Create a sidewalk conditions database to monitor improvement needs and identify priority projects.				Short-Range
Align the Parks Master Plan and Parks and Trails Map with the Future Land Use Plan.				Short-Range
Prioritize and implement the multi-modal transportation recommendations within the Master Thoroughfare Plan.				Mid-Range
Conduct a walkability and connectivity assessment on proposed new developments when development applications are submitted.				Short-Range
Perform a diagnostic of the zoning and subdivision ordinances to ensure pedestrian oriented design elements are incorporated into new development projects.				Short-Range
Coordinate with government entities, non-profit and community groups, and private organizations to expand access to healthcare and social services where needed. Such entities could include school districts, on-demand transportation providers, local churches, hospital systems, and clinics.				Short-Range

### Healthy Community



### Smart Community



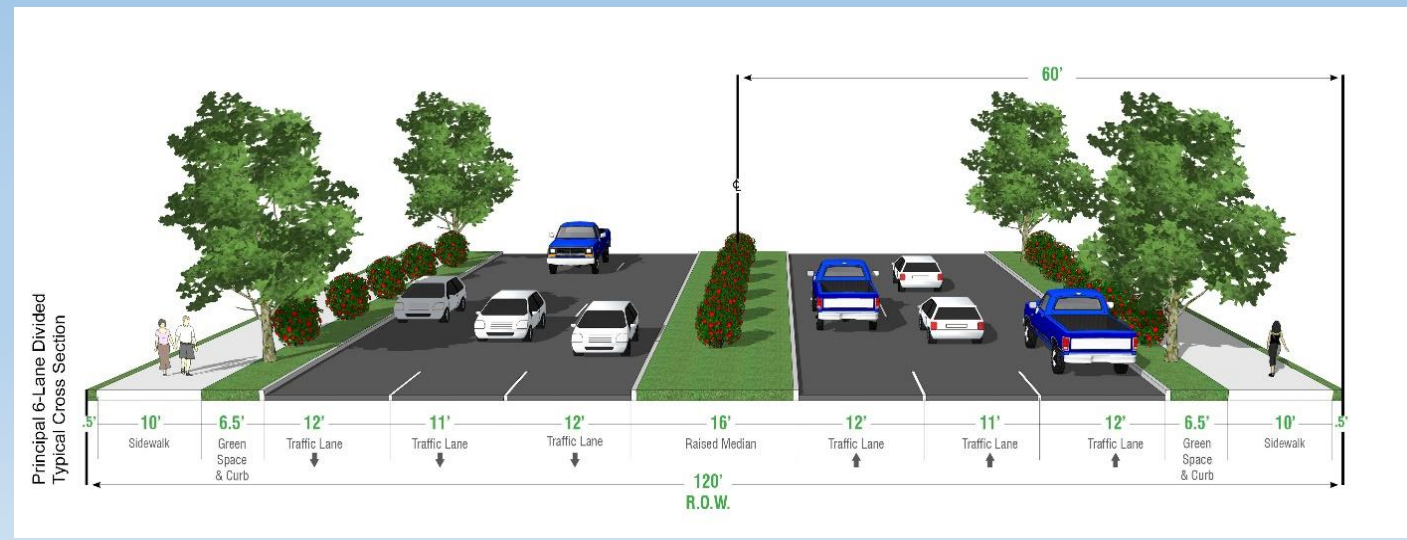
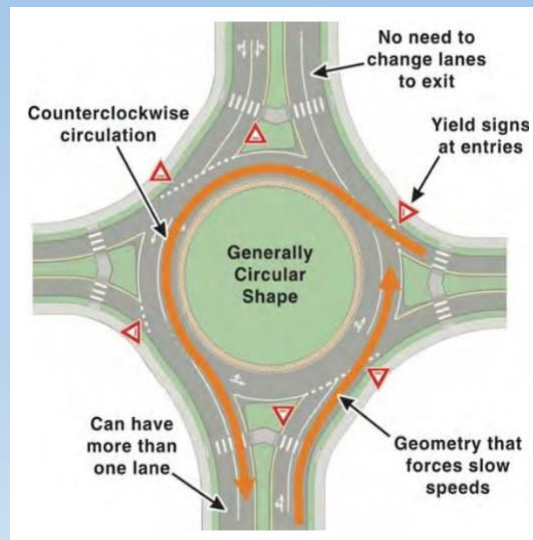
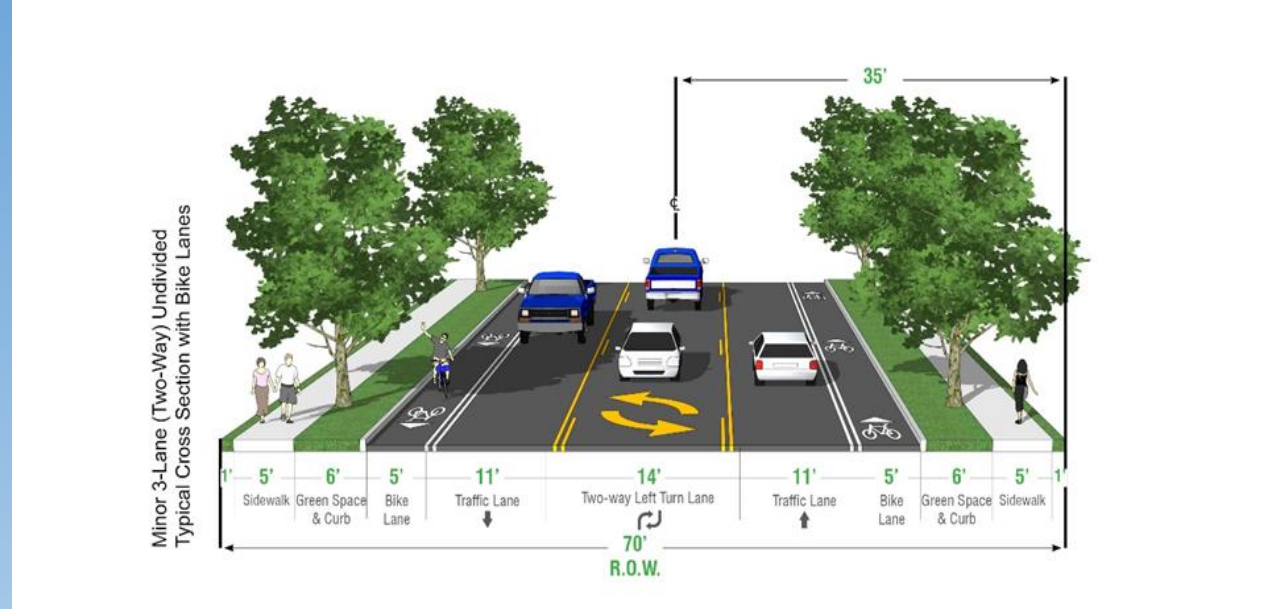
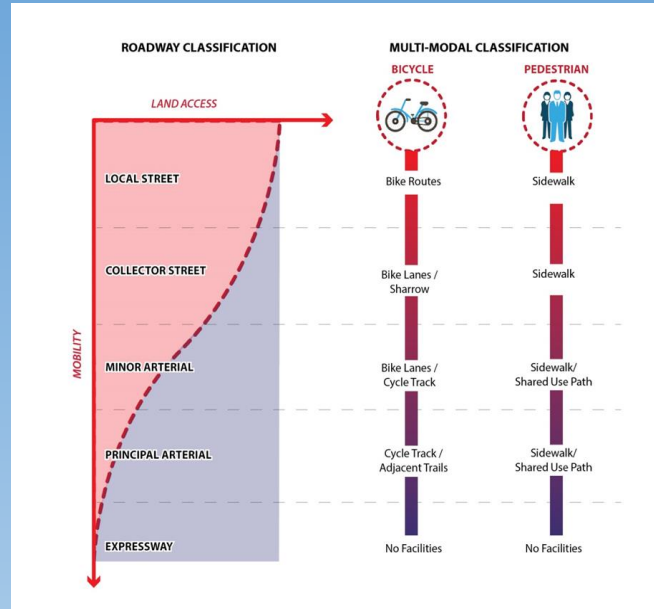
### Sustainable Community





# PLANNING UPDATE

## UDC Chapter 23: Master Transportation Plan







# Questions?