

DELGADO AUTO SALES

Street Address

GRAND PRAIRIE, TEXAS

ISSUE LOG:

NO.	DATE	COMMENTS
1	08-19-14	CITY SUBMITTAL
2	09-25-14	CITY SUP REVIEW
3	10-01-14	PRZ SUP SUB
4	10-03-14	PRZ SUP REVISION

DESIGN ALCHEMY, L.L.C.

428 W. Davis Street
Dallas, Texas 75208
214.941.9988 Fax
214.941.9988 Fax

NOT FOR REGULATORY
APPROVAL, PERMITTING OR
CONSTRUCTION.

JOSEPH H. WILKINS, AIA
TX#11757

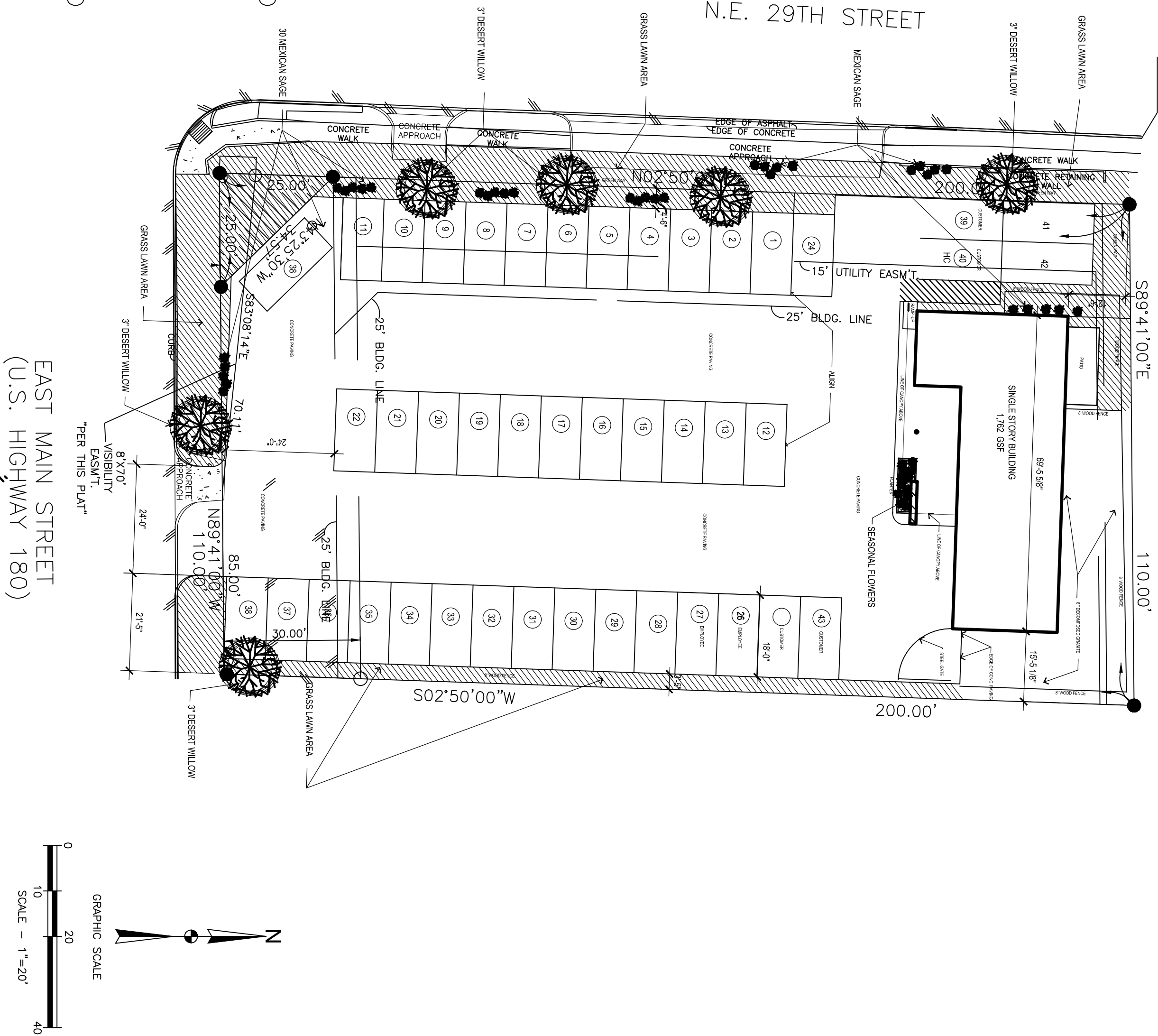
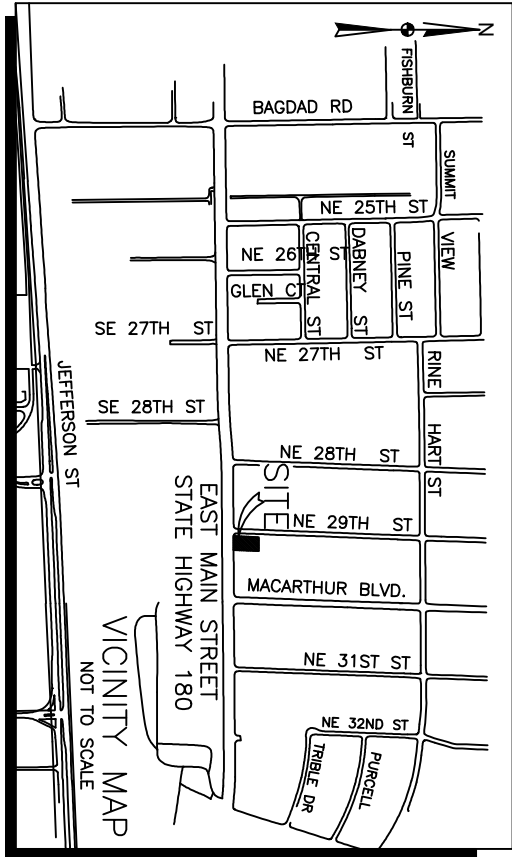
TITLE:

LANDSCAPE
PLAN

PROJECT NO.:	14-009
DATE:	07.22.2014
DRAWN BY:	AAB
CHECKED BY:	JHW

SHEET NUMBER:

L-005



	CITY OF GRAND PRAIRIE
JURISDICTION	
BUILDING CODES	2009 INTERNATIONAL BUILDING CODE 2009 INTERNATIONAL PLUMBING CODE 2009 INTERNATIONAL MECHANICAL CODE 2009 INTERNATIONAL FIRE CODE 2008 INTERNATIONAL ELECTRICAL CODE 2009 INTERNATIONAL ENERGY CODE
BUSINESS CLASSIFICATION	SALES
CONSTRUCTION TYPE	TYPE I
BUILDING AREA	1,762 GSF
OCCUPANCY LOAD @ 1 : 200 SF	6
PARKING REQUIRED 1,400 SF & PARKING PROVIDED	6 SPACES REQUIRED - 6 NON-SALES SPACE PROVIDED
COMMERCIAL DISTRICT - LANDSCAPE REQUIRED & LANDSCAPE PROVIDED	5% OF PROPERTY (1,100 SF) - 6.7% (1,480 SF) PROVIDED
LANDSCAPE FRONTAGE REQUIRED & LANDSCAPE FRONTAGE PROVIDED	75% (825 SF) REQUIRED - 89% (979 SF) PROVIDED
TREES 1 PER 500 SF OF LANDSCAPE REQUIRED AREA & TREES PROVIDED	3 TREES REQUIRED - 4 PROVIDED
SHRUBS 1 PER 50 SF OF LANDSCAPE REQUIRED AREA & SHRUBS PROVIDED	22 SHRUBS REQUIRED - 25 PROVIDED

LANDSCALE NOTES

1. TOTAL LANDSCAPE COVERAGE EXCEEDS 5% OF GSF OF SITE (7.7% COVERAGE) DOES NOT INCLUDE AREA INDICATED AS BEING "DECOMPOSED GRANITE"
2. IRRIGATION WILL MEET ALL REQUIREMENTS OF THE UDC
3. AREAS INDICATED AS "HATCHED" WILL BE GRASS LAWN.
4. TREES WILL BE "DESERT WILLOWS" (5' CALIBER)
5. PLANTS WILL BE "MEXICAN SAGE" (1 GALLON)
6. MISCELLANEOUS "SEASONAL FLOWERS" WILL BE PLANTED IN PREPARED BEDS
7. DUMPSTER ENCLOSURE WILL BE DESIGNED AND CONSTRUCTED TO BE IN COMPLIANCE WITH UDC.

FINAL PLAT
LOT 215-R
BURBANK GARDENS ADDITION
UNIT #1 REVISED
CONTAINING 21,979 SQ. FT. OR 0.505 OF AN ACRE
AN ADDITION TO THE CITY OF GRAND
PRAIRIE, DALLAS COUNTY, TEXAS
BEING A REPLAT OF
LOT 214 AND LOT 215 AND
A 30' x 110' DESIGNATED PARKWAY
BURBANK GARDENS ADDITION
UNIT #1 REVISED
AN ADDITION TO THE CITY OF GRAND
PRAIRIE, DALLAS COUNTY, TEXAS

SU 141003/S141002