

Exhibit D - Building Elevations  
Page 1 of 15

NO.	DESCRIPTION	QTY	UNIT	PRICE	TOTAL
1	...	...	...	...	...
2	...	...	...	...	...
3	...	...	...	...	...
4	...	...	...	...	...
5	...	...	...	...	...
6	...	...	...	...	...
7	...	...	...	...	...
8	...	...	...	...	...
9	...	...	...	...	...
10	...	...	...	...	...
11	...	...	...	...	...
12	...	...	...	...	...
13	...	...	...	...	...
14	...	...	...	...	...
15	...	...	...	...	...
16	...	...	...	...	...
17	...	...	...	...	...
18	...	...	...	...	...
19	...	...	...	...	...
20	...	...	...	...	...
21	...	...	...	...	...
22	...	...	...	...	...
23	...	...	...	...	...
24	...	...	...	...	...
25	...	...	...	...	...
26	...	...	...	...	...
27	...	...	...	...	...
28	...	...	...	...	...
29	...	...	...	...	...
30	...	...	...	...	...
31	...	...	...	...	...
32	...	...	...	...	...
33	...	...	...	...	...
34	...	...	...	...	...
35	...	...	...	...	...
36	...	...	...	...	...
37	...	...	...	...	...
38	...	...	...	...	...
39	...	...	...	...	...
40	...	...	...	...	...
41	...	...	...	...	...
42	...	...	...	...	...
43	...	...	...	...	...
44	...	...	...	...	...
45	...	...	...	...	...
46	...	...	...	...	...
47	...	...	...	...	...
48	...	...	...	...	...
49	...	...	...	...	...
50	...	...	...	...	...
51	...	...	...	...	...
52	...	...	...	...	...
53	...	...	...	...	...
54	...	...	...	...	...
55	...	...	...	...	...
56	...	...	...	...	...
57	...	...	...	...	...
58	...	...	...	...	...
59	...	...	...	...	...
60	...	...	...	...	...
61	...	...	...	...	...
62	...	...	...	...	...
63	...	...	...	...	...
64	...	...	...	...	...
65	...	...	...	...	...
66	...	...	...	...	...
67	...	...	...	...	...
68	...	...	...	...	...
69	...	...	...	...	...
70	...	...	...	...	...
71	...	...	...	...	...
72	...	...	...	...	...
73	...	...	...	...	...
74	...	...	...	...	...
75	...	...	...	...	...
76	...	...	...	...	...
77	...	...	...	...	...
78	...	...	...	...	...
79	...	...	...	...	...
80	...	...	...	...	...
81	...	...	...	...	...
82	...	...	...	...	...
83	...	...	...	...	...
84	...	...	...	...	...
85	...	...	...	...	...
86	...	...	...	...	...
87	...	...	...	...	...
88	...	...	...	...	...
89	...	...	...	...	...
90	...	...	...	...	...
91	...	...	...	...	...
92	...	...	...	...	...
93	...	...	...	...	...
94	...	...	...	...	...
95	...	...	...	...	...
96	...	...	...	...	...
97	...	...	...	...	...
98	...	...	...	...	...
99	...	...	...	...	...
100	...	...	...	...	...



162995

ELEVATION  
ONE | SIX | ONE

LOT --- BLOCK ---  
--- COUNTY ---

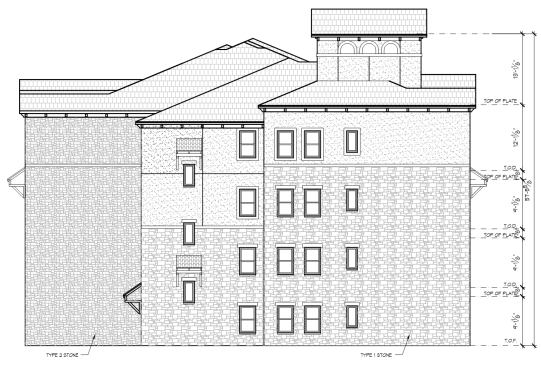
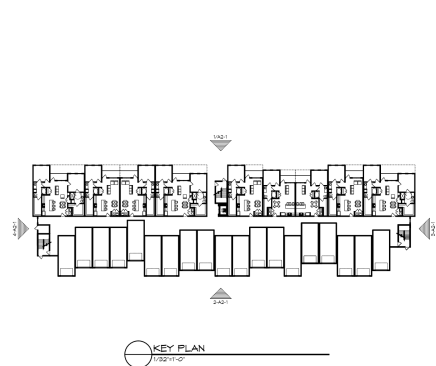
DATE: 8-21-19  
1-16-19 REV  
---

GENERAL NOTES:  
1. ELEVATIONS SHALL BE SHOWN AS INDICATED HEREON.  
2. ELEVATIONS SHALL BE SHOWN AS INDICATED HEREON.  
3. ELEVATIONS SHALL BE SHOWN AS INDICATED HEREON.  
4. ELEVATIONS SHALL BE SHOWN AS INDICATED HEREON.  
5. ELEVATIONS SHALL BE SHOWN AS INDICATED HEREON.  
6. ELEVATIONS SHALL BE SHOWN AS INDICATED HEREON.  
7. ELEVATIONS SHALL BE SHOWN AS INDICATED HEREON.  
8. ELEVATIONS SHALL BE SHOWN AS INDICATED HEREON.  
9. ELEVATIONS SHALL BE SHOWN AS INDICATED HEREON.  
10. ELEVATIONS SHALL BE SHOWN AS INDICATED HEREON.

SHEET TITLE  
ELEVATIONS  
SCALE: 1/8" = 1'-0"

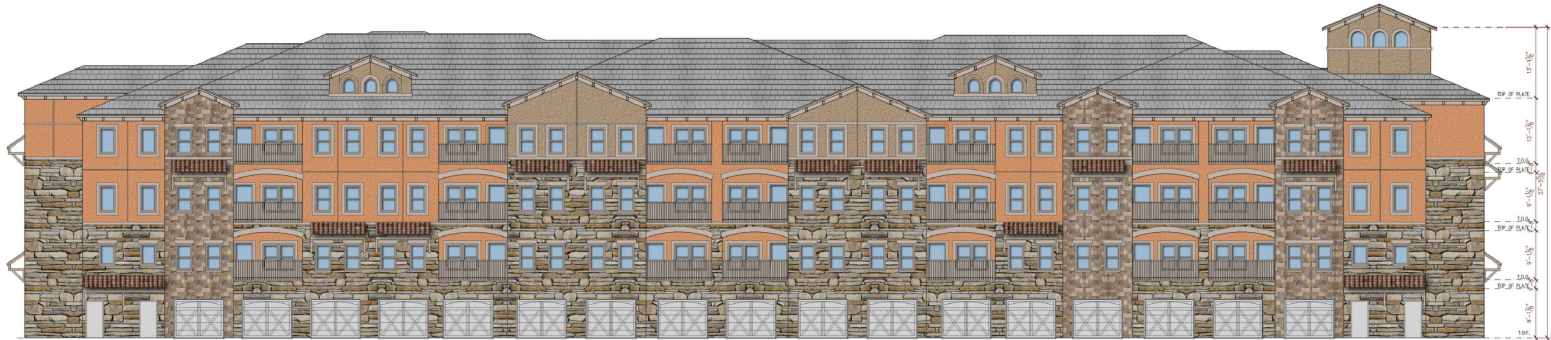
**No. 10**  
**DESIGN**  
**GROUP**  
**ARCHITECTS**  
2415 HOLLYWOOD BLVD., SUITE 100, HOUSTON, TEXAS 77027  
P: 281.440.1010  
F: 281.440.1011  
WWW.NO10DESIGNGROUP.COM  
SHEET NO.:  
A2-1(BLDG 3)

CASE NUMBER:  
5190204

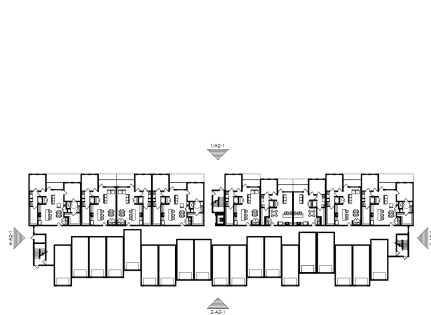




1 NORTH ELEVATION - BUILDING 3  
1/8"=1'-0"



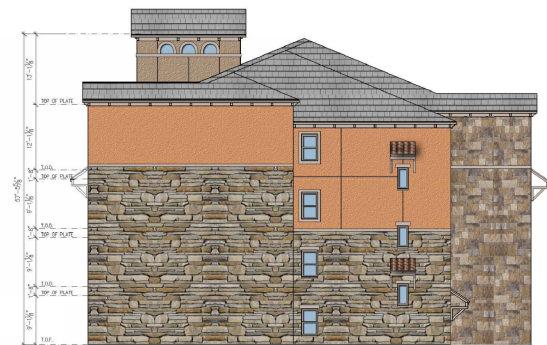
2 SOUTH ELEVATION - BUILDING 3  
1/8"=1'-0"



KEY PLAN  
1/8"=1'-0"



3 EAST ELEVATION - BUILDING 3  
1/8"=1'-0"



4 WEST ELEVATION - BUILDING 3  
1/8"=1'-0"



182995

ELEVATION  
ONE | SIX | ONE

LOT --- BLOCK ---  
COUNTY

DATE: 8-21-18  
1-10-18 REV  
---

GENERAL NOTES:  
1. CONSULT THE ARCHITECT FOR ALL CHANGES TO THE DESIGN.  
2. THE ARCHITECT IS NOT RESPONSIBLE FOR THE ACCURACY OF THE INFORMATION PROVIDED BY THE CLIENT.  
3. THE ARCHITECT IS NOT RESPONSIBLE FOR THE ACCURACY OF THE INFORMATION PROVIDED BY THE CLIENT.  
4. THE ARCHITECT IS NOT RESPONSIBLE FOR THE ACCURACY OF THE INFORMATION PROVIDED BY THE CLIENT.  
5. THE ARCHITECT IS NOT RESPONSIBLE FOR THE ACCURACY OF THE INFORMATION PROVIDED BY THE CLIENT.  
6. THE ARCHITECT IS NOT RESPONSIBLE FOR THE ACCURACY OF THE INFORMATION PROVIDED BY THE CLIENT.  
7. THE ARCHITECT IS NOT RESPONSIBLE FOR THE ACCURACY OF THE INFORMATION PROVIDED BY THE CLIENT.  
8. THE ARCHITECT IS NOT RESPONSIBLE FOR THE ACCURACY OF THE INFORMATION PROVIDED BY THE CLIENT.  
9. THE ARCHITECT IS NOT RESPONSIBLE FOR THE ACCURACY OF THE INFORMATION PROVIDED BY THE CLIENT.  
10. THE ARCHITECT IS NOT RESPONSIBLE FOR THE ACCURACY OF THE INFORMATION PROVIDED BY THE CLIENT.

SHEET TITLE:  
COLORED  
ELEVATIONS  
SCALE: 1/8" = 1'-0"

**No. 10**  
DESIGN  
GROUP  
ARCHITECTS  
CASE NUMBER:  
S190204  
SHEET NO.:  
A2-2(BLDG 3)



Exhibit D - Building Elevations  
Page 3 of 15

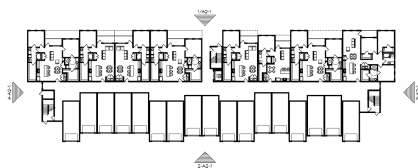
ITEM	DESCRIPTION	QTY	UNIT	PRICE	TOTAL
1	CONCRETE	100	YD	120.00	12000.00
2	BRICK	100	MSF	150.00	15000.00
3	WOOD	100	MSF	100.00	10000.00
4	GLASS	100	SF	200.00	20000.00
5	IRON	100	LB	1.00	100.00
6	PAINT	100	GA	50.00	5000.00
7	ROOFING	100	SF	30.00	3000.00
8	MECHANICAL	100	HR	10.00	1000.00
9	ELECTRICAL	100	HR	10.00	1000.00
10	PLUMBING	100	HR	10.00	1000.00
11	LANDSCAPE	100	SF	10.00	1000.00
12	FOUNDATION	100	YD	10.00	1000.00
13	WATER	100	YD	10.00	1000.00
14	SEWER	100	YD	10.00	1000.00
15	DRIVEWAY	100	YD	10.00	1000.00
16	PARKING	100	SF	10.00	1000.00
17	WALKWAY	100	SF	10.00	1000.00
18	STAIRS	100	SF	10.00	1000.00
19	ELEVATOR	100	SF	10.00	1000.00
20	LOBBY	100	SF	10.00	1000.00
21	OFFICE	100	SF	10.00	1000.00
22	RETAIL	100	SF	10.00	1000.00
23	RESTROOM	100	SF	10.00	1000.00
24	KITCHEN	100	SF	10.00	1000.00
25	DINING	100	SF	10.00	1000.00
26	BAR	100	SF	10.00	1000.00
27	THEATER	100	SF	10.00	1000.00
28	GYM	100	SF	10.00	1000.00
29	POOL	100	SF	10.00	1000.00
30	SPRINKLER	100	SF	10.00	1000.00



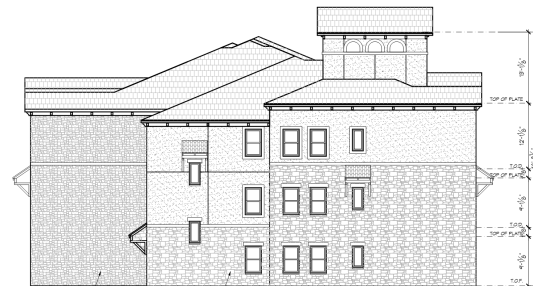
1 EAST ELEVATION - BUILDING 4  
1/8" = 1'-0"



2 WEST ELEVATION - BUILDING 4  
1/8" = 1'-0"



KEY PLAN  
1/32" = 1'-0"



3 SOUTH ELEVATION - BUILDING 4  
1/8" = 1'-0"



4 NORTH ELEVATION - BUILDING 4  
1/8" = 1'-0"



182995

ELEVATION  
ONE | SIX | ONE

LOT --- BLOCK ---  
--- COUNTY ---

DATE: 8-21-18  
1/8" = 1'-0" REV  
---

GENERAL NOTES:  
1. ELEVATIONS ARE SHOWN AS INDICATED UNLESS OTHERWISE NOTED.  
2. ELEVATIONS ARE SHOWN AS INDICATED UNLESS OTHERWISE NOTED.  
3. ELEVATIONS ARE SHOWN AS INDICATED UNLESS OTHERWISE NOTED.  
4. ELEVATIONS ARE SHOWN AS INDICATED UNLESS OTHERWISE NOTED.  
5. ELEVATIONS ARE SHOWN AS INDICATED UNLESS OTHERWISE NOTED.  
6. ELEVATIONS ARE SHOWN AS INDICATED UNLESS OTHERWISE NOTED.  
7. ELEVATIONS ARE SHOWN AS INDICATED UNLESS OTHERWISE NOTED.  
8. ELEVATIONS ARE SHOWN AS INDICATED UNLESS OTHERWISE NOTED.  
9. ELEVATIONS ARE SHOWN AS INDICATED UNLESS OTHERWISE NOTED.  
10. ELEVATIONS ARE SHOWN AS INDICATED UNLESS OTHERWISE NOTED.  
11. ELEVATIONS ARE SHOWN AS INDICATED UNLESS OTHERWISE NOTED.  
12. ELEVATIONS ARE SHOWN AS INDICATED UNLESS OTHERWISE NOTED.  
13. ELEVATIONS ARE SHOWN AS INDICATED UNLESS OTHERWISE NOTED.  
14. ELEVATIONS ARE SHOWN AS INDICATED UNLESS OTHERWISE NOTED.  
15. ELEVATIONS ARE SHOWN AS INDICATED UNLESS OTHERWISE NOTED.  
16. ELEVATIONS ARE SHOWN AS INDICATED UNLESS OTHERWISE NOTED.  
17. ELEVATIONS ARE SHOWN AS INDICATED UNLESS OTHERWISE NOTED.  
18. ELEVATIONS ARE SHOWN AS INDICATED UNLESS OTHERWISE NOTED.  
19. ELEVATIONS ARE SHOWN AS INDICATED UNLESS OTHERWISE NOTED.  
20. ELEVATIONS ARE SHOWN AS INDICATED UNLESS OTHERWISE NOTED.  
21. ELEVATIONS ARE SHOWN AS INDICATED UNLESS OTHERWISE NOTED.  
22. ELEVATIONS ARE SHOWN AS INDICATED UNLESS OTHERWISE NOTED.  
23. ELEVATIONS ARE SHOWN AS INDICATED UNLESS OTHERWISE NOTED.  
24. ELEVATIONS ARE SHOWN AS INDICATED UNLESS OTHERWISE NOTED.  
25. ELEVATIONS ARE SHOWN AS INDICATED UNLESS OTHERWISE NOTED.  
26. ELEVATIONS ARE SHOWN AS INDICATED UNLESS OTHERWISE NOTED.  
27. ELEVATIONS ARE SHOWN AS INDICATED UNLESS OTHERWISE NOTED.  
28. ELEVATIONS ARE SHOWN AS INDICATED UNLESS OTHERWISE NOTED.  
29. ELEVATIONS ARE SHOWN AS INDICATED UNLESS OTHERWISE NOTED.  
30. ELEVATIONS ARE SHOWN AS INDICATED UNLESS OTHERWISE NOTED.  
31. ELEVATIONS ARE SHOWN AS INDICATED UNLESS OTHERWISE NOTED.  
32. ELEVATIONS ARE SHOWN AS INDICATED UNLESS OTHERWISE NOTED.  
33. ELEVATIONS ARE SHOWN AS INDICATED UNLESS OTHERWISE NOTED.  
34. ELEVATIONS ARE SHOWN AS INDICATED UNLESS OTHERWISE NOTED.  
35. ELEVATIONS ARE SHOWN AS INDICATED UNLESS OTHERWISE NOTED.  
36. ELEVATIONS ARE SHOWN AS INDICATED UNLESS OTHERWISE NOTED.  
37. ELEVATIONS ARE SHOWN AS INDICATED UNLESS OTHERWISE NOTED.  
38. ELEVATIONS ARE SHOWN AS INDICATED UNLESS OTHERWISE NOTED.  
39. ELEVATIONS ARE SHOWN AS INDICATED UNLESS OTHERWISE NOTED.  
40. ELEVATIONS ARE SHOWN AS INDICATED UNLESS OTHERWISE NOTED.  
41. ELEVATIONS ARE SHOWN AS INDICATED UNLESS OTHERWISE NOTED.  
42. ELEVATIONS ARE SHOWN AS INDICATED UNLESS OTHERWISE NOTED.  
43. ELEVATIONS ARE SHOWN AS INDICATED UNLESS OTHERWISE NOTED.  
44. ELEVATIONS ARE SHOWN AS INDICATED UNLESS OTHERWISE NOTED.  
45. ELEVATIONS ARE SHOWN AS INDICATED UNLESS OTHERWISE NOTED.  
46. ELEVATIONS ARE SHOWN AS INDICATED UNLESS OTHERWISE NOTED.  
47. ELEVATIONS ARE SHOWN AS INDICATED UNLESS OTHERWISE NOTED.  
48. ELEVATIONS ARE SHOWN AS INDICATED UNLESS OTHERWISE NOTED.  
49. ELEVATIONS ARE SHOWN AS INDICATED UNLESS OTHERWISE NOTED.  
50. ELEVATIONS ARE SHOWN AS INDICATED UNLESS OTHERWISE NOTED.  
51. ELEVATIONS ARE SHOWN AS INDICATED UNLESS OTHERWISE NOTED.  
52. ELEVATIONS ARE SHOWN AS INDICATED UNLESS OTHERWISE NOTED.  
53. ELEVATIONS ARE SHOWN AS INDICATED UNLESS OTHERWISE NOTED.  
54. ELEVATIONS ARE SHOWN AS INDICATED UNLESS OTHERWISE NOTED.  
55. ELEVATIONS ARE SHOWN AS INDICATED UNLESS OTHERWISE NOTED.  
56. ELEVATIONS ARE SHOWN AS INDICATED UNLESS OTHERWISE NOTED.  
57. ELEVATIONS ARE SHOWN AS INDICATED UNLESS OTHERWISE NOTED.  
58. ELEVATIONS ARE SHOWN AS INDICATED UNLESS OTHERWISE NOTED.  
59. ELEVATIONS ARE SHOWN AS INDICATED UNLESS OTHERWISE NOTED.  
60. ELEVATIONS ARE SHOWN AS INDICATED UNLESS OTHERWISE NOTED.  
61. ELEVATIONS ARE SHOWN AS INDICATED UNLESS OTHERWISE NOTED.  
62. ELEVATIONS ARE SHOWN AS INDICATED UNLESS OTHERWISE NOTED.  
63. ELEVATIONS ARE SHOWN AS INDICATED UNLESS OTHERWISE NOTED.  
64. ELEVATIONS ARE SHOWN AS INDICATED UNLESS OTHERWISE NOTED.  
65. ELEVATIONS ARE SHOWN AS INDICATED UNLESS OTHERWISE NOTED.  
66. ELEVATIONS ARE SHOWN AS INDICATED UNLESS OTHERWISE NOTED.  
67. ELEVATIONS ARE SHOWN AS INDICATED UNLESS OTHERWISE NOTED.  
68. ELEVATIONS ARE SHOWN AS INDICATED UNLESS OTHERWISE NOTED.  
69. ELEVATIONS ARE SHOWN AS INDICATED UNLESS OTHERWISE NOTED.  
70. ELEVATIONS ARE SHOWN AS INDICATED UNLESS OTHERWISE NOTED.  
71. ELEVATIONS ARE SHOWN AS INDICATED UNLESS OTHERWISE NOTED.  
72. ELEVATIONS ARE SHOWN AS INDICATED UNLESS OTHERWISE NOTED.  
73. ELEVATIONS ARE SHOWN AS INDICATED UNLESS OTHERWISE NOTED.  
74. ELEVATIONS ARE SHOWN AS INDICATED UNLESS OTHERWISE NOTED.  
75. ELEVATIONS ARE SHOWN AS INDICATED UNLESS OTHERWISE NOTED.  
76. ELEVATIONS ARE SHOWN AS INDICATED UNLESS OTHERWISE NOTED.  
77. ELEVATIONS ARE SHOWN AS INDICATED UNLESS OTHERWISE NOTED.  
78. ELEVATIONS ARE SHOWN AS INDICATED UNLESS OTHERWISE NOTED.  
79. ELEVATIONS ARE SHOWN AS INDICATED UNLESS OTHERWISE NOTED.  
80. ELEVATIONS ARE SHOWN AS INDICATED UNLESS OTHERWISE NOTED.  
81. ELEVATIONS ARE SHOWN AS INDICATED UNLESS OTHERWISE NOTED.  
82. ELEVATIONS ARE SHOWN AS INDICATED UNLESS OTHERWISE NOTED.  
83. ELEVATIONS ARE SHOWN AS INDICATED UNLESS OTHERWISE NOTED.  
84. ELEVATIONS ARE SHOWN AS INDICATED UNLESS OTHERWISE NOTED.  
85. ELEVATIONS ARE SHOWN AS INDICATED UNLESS OTHERWISE NOTED.  
86. ELEVATIONS ARE SHOWN AS INDICATED UNLESS OTHERWISE NOTED.  
87. ELEVATIONS ARE SHOWN AS INDICATED UNLESS OTHERWISE NOTED.  
88. ELEVATIONS ARE SHOWN AS INDICATED UNLESS OTHERWISE NOTED.  
89. ELEVATIONS ARE SHOWN AS INDICATED UNLESS OTHERWISE NOTED.  
90. ELEVATIONS ARE SHOWN AS INDICATED UNLESS OTHERWISE NOTED.  
91. ELEVATIONS ARE SHOWN AS INDICATED UNLESS OTHERWISE NOTED.  
92. ELEVATIONS ARE SHOWN AS INDICATED UNLESS OTHERWISE NOTED.  
93. ELEVATIONS ARE SHOWN AS INDICATED UNLESS OTHERWISE NOTED.  
94. ELEVATIONS ARE SHOWN AS INDICATED UNLESS OTHERWISE NOTED.  
95. ELEVATIONS ARE SHOWN AS INDICATED UNLESS OTHERWISE NOTED.  
96. ELEVATIONS ARE SHOWN AS INDICATED UNLESS OTHERWISE NOTED.  
97. ELEVATIONS ARE SHOWN AS INDICATED UNLESS OTHERWISE NOTED.  
98. ELEVATIONS ARE SHOWN AS INDICATED UNLESS OTHERWISE NOTED.  
99. ELEVATIONS ARE SHOWN AS INDICATED UNLESS OTHERWISE NOTED.  
100. ELEVATIONS ARE SHOWN AS INDICATED UNLESS OTHERWISE NOTED.

NO. 10  
DESIGN  
GROUP  
ARCHITECTS  
2015 PRAIRIE AVENUE, SUITE 100, FORT WORTH, TEXAS 76102  
817-335-1000  
SHEET No. A2-1(BLDG 4)

CASE NUMBER:  
S190204

Exhibit D - Building Elevations  
Page 4 of 15



1 EAST ELEVATION - BUILDING 4  
1/8" = 1'-0"



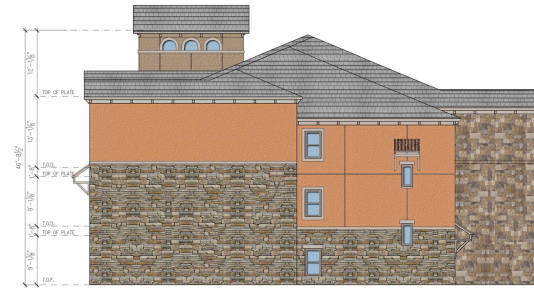
2 WEST ELEVATION - BUILDING 4  
1/8" = 1'-0"



KEY PLAN  
1/8" = 1'-0"



3 SOUTH ELEVATION - BUILDING 4  
1/8" = 1'-0"



4 NORTH ELEVATION - BUILDING 4  
1/8" = 1'-0"



182915

ELEVATION  
ONE | SIX | ONE

LOT --- BLOCK ---  
--- COUNTY ---

DATE: 8-21-18  
1-18-18 REV  
---

GENERAL NOTES:  
1. CONSULT THE ARCHITECT FOR ALL INFORMATION.  
2. PROVIDE ALL INFORMATION TO THE ARCHITECT FOR ALL INFORMATION.  
3. PROVIDE ALL INFORMATION TO THE ARCHITECT FOR ALL INFORMATION.  
4. PROVIDE ALL INFORMATION TO THE ARCHITECT FOR ALL INFORMATION.  
5. PROVIDE ALL INFORMATION TO THE ARCHITECT FOR ALL INFORMATION.  
6. PROVIDE ALL INFORMATION TO THE ARCHITECT FOR ALL INFORMATION.  
7. PROVIDE ALL INFORMATION TO THE ARCHITECT FOR ALL INFORMATION.  
8. PROVIDE ALL INFORMATION TO THE ARCHITECT FOR ALL INFORMATION.  
9. PROVIDE ALL INFORMATION TO THE ARCHITECT FOR ALL INFORMATION.  
10. PROVIDE ALL INFORMATION TO THE ARCHITECT FOR ALL INFORMATION.

SHEET TITLE:  
COLORED  
ELEVATIONS  
SCALE 1/8" = 1'-0"

No. 10  
DESIGN  
GROUP  
ARCHITECTS  
SHEET No.:  
A2-2(BLDG 4)

CASE NUMBER:  
S190204



Exhibit D - Building Elevations  
Page 5 of 15

REVISION	DATE	BY	CHK	APP
1	08-21-18	...	...	...
2	08-21-18	...	...	...
3	08-21-18	...	...	...
4	08-21-18	...	...	...
5	08-21-18	...	...	...
6	08-21-18	...	...	...
7	08-21-18	...	...	...
8	08-21-18	...	...	...
9	08-21-18	...	...	...
10	08-21-18	...	...	...
11	08-21-18	...	...	...
12	08-21-18	...	...	...
13	08-21-18	...	...	...
14	08-21-18	...	...	...
15	08-21-18	...	...	...
16	08-21-18	...	...	...
17	08-21-18	...	...	...
18	08-21-18	...	...	...
19	08-21-18	...	...	...
20	08-21-18	...	...	...
21	08-21-18	...	...	...
22	08-21-18	...	...	...
23	08-21-18	...	...	...
24	08-21-18	...	...	...
25	08-21-18	...	...	...
26	08-21-18	...	...	...
27	08-21-18	...	...	...
28	08-21-18	...	...	...
29	08-21-18	...	...	...
30	08-21-18	...	...	...
31	08-21-18	...	...	...
32	08-21-18	...	...	...
33	08-21-18	...	...	...
34	08-21-18	...	...	...
35	08-21-18	...	...	...
36	08-21-18	...	...	...
37	08-21-18	...	...	...
38	08-21-18	...	...	...
39	08-21-18	...	...	...
40	08-21-18	...	...	...
41	08-21-18	...	...	...
42	08-21-18	...	...	...
43	08-21-18	...	...	...
44	08-21-18	...	...	...
45	08-21-18	...	...	...
46	08-21-18	...	...	...
47	08-21-18	...	...	...
48	08-21-18	...	...	...
49	08-21-18	...	...	...
50	08-21-18	...	...	...
51	08-21-18	...	...	...
52	08-21-18	...	...	...
53	08-21-18	...	...	...
54	08-21-18	...	...	...
55	08-21-18	...	...	...
56	08-21-18	...	...	...
57	08-21-18	...	...	...
58	08-21-18	...	...	...
59	08-21-18	...	...	...
60	08-21-18	...	...	...
61	08-21-18	...	...	...
62	08-21-18	...	...	...
63	08-21-18	...	...	...
64	08-21-18	...	...	...
65	08-21-18	...	...	...
66	08-21-18	...	...	...
67	08-21-18	...	...	...
68	08-21-18	...	...	...
69	08-21-18	...	...	...
70	08-21-18	...	...	...
71	08-21-18	...	...	...
72	08-21-18	...	...	...
73	08-21-18	...	...	...
74	08-21-18	...	...	...
75	08-21-18	...	...	...
76	08-21-18	...	...	...
77	08-21-18	...	...	...
78	08-21-18	...	...	...
79	08-21-18	...	...	...
80	08-21-18	...	...	...
81	08-21-18	...	...	...
82	08-21-18	...	...	...
83	08-21-18	...	...	...
84	08-21-18	...	...	...
85	08-21-18	...	...	...
86	08-21-18	...	...	...
87	08-21-18	...	...	...
88	08-21-18	...	...	...
89	08-21-18	...	...	...
90	08-21-18	...	...	...
91	08-21-18	...	...	...
92	08-21-18	...	...	...
93	08-21-18	...	...	...
94	08-21-18	...	...	...
95	08-21-18	...	...	...
96	08-21-18	...	...	...
97	08-21-18	...	...	...
98	08-21-18	...	...	...
99	08-21-18	...	...	...
100	08-21-18	...	...	...



182945

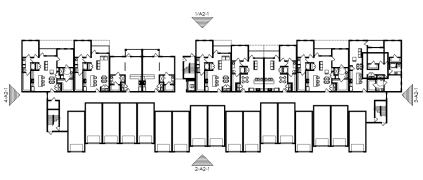
ELEVATION  
ONE | SIX | ONE



1 NORTH ELEV - BUILDINGS 5, 6, EAST ELEV. BLDG 7  
1/8"=1'-0"



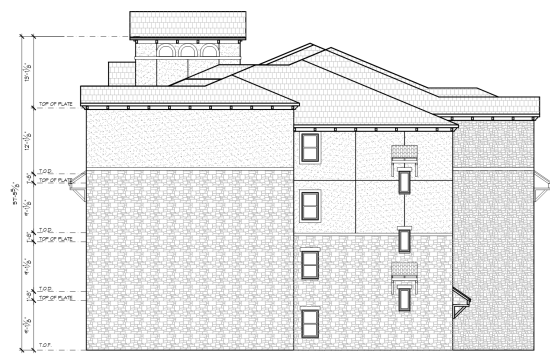
2 SOUTH ELEV - BUILDINGS 5, 6, WEST ELEV. BLDG 7  
1/8"=1'-0"



KEY PLAN  
1/8"=1'-0"



3 EAST ELEV - BUILDINGS 5, 6, SOUTH ELEV. BLDG 7  
1/8"=1'-0"



4 WEST ELEV - BUILDINGS 5, 6, NORTH ELEV. BLDG 7  
1/8"=1'-0"

GENERAL NOTES:  
1. SEE GENERAL NOTES SHEET A2-1 (BLDG 5-6-7) FOR  
2. SEE GENERAL NOTES SHEET A2-2 (BLDG 5-6-7) FOR  
3. SEE GENERAL NOTES SHEET A2-3 (BLDG 5-6-7) FOR  
4. SEE GENERAL NOTES SHEET A2-4 (BLDG 5-6-7) FOR  
5. SEE GENERAL NOTES SHEET A2-5 (BLDG 5-6-7) FOR  
6. SEE GENERAL NOTES SHEET A2-6 (BLDG 5-6-7) FOR  
7. SEE GENERAL NOTES SHEET A2-7 (BLDG 5-6-7) FOR  
8. SEE GENERAL NOTES SHEET A2-8 (BLDG 5-6-7) FOR  
9. SEE GENERAL NOTES SHEET A2-9 (BLDG 5-6-7) FOR  
10. SEE GENERAL NOTES SHEET A2-10 (BLDG 5-6-7) FOR  
11. SEE GENERAL NOTES SHEET A2-11 (BLDG 5-6-7) FOR  
12. SEE GENERAL NOTES SHEET A2-12 (BLDG 5-6-7) FOR  
13. SEE GENERAL NOTES SHEET A2-13 (BLDG 5-6-7) FOR  
14. SEE GENERAL NOTES SHEET A2-14 (BLDG 5-6-7) FOR  
15. SEE GENERAL NOTES SHEET A2-15 (BLDG 5-6-7) FOR  
16. SEE GENERAL NOTES SHEET A2-16 (BLDG 5-6-7) FOR  
17. SEE GENERAL NOTES SHEET A2-17 (BLDG 5-6-7) FOR  
18. SEE GENERAL NOTES SHEET A2-18 (BLDG 5-6-7) FOR  
19. SEE GENERAL NOTES SHEET A2-19 (BLDG 5-6-7) FOR  
20. SEE GENERAL NOTES SHEET A2-20 (BLDG 5-6-7) FOR  
21. SEE GENERAL NOTES SHEET A2-21 (BLDG 5-6-7) FOR  
22. SEE GENERAL NOTES SHEET A2-22 (BLDG 5-6-7) FOR  
23. SEE GENERAL NOTES SHEET A2-23 (BLDG 5-6-7) FOR  
24. SEE GENERAL NOTES SHEET A2-24 (BLDG 5-6-7) FOR  
25. SEE GENERAL NOTES SHEET A2-25 (BLDG 5-6-7) FOR  
26. SEE GENERAL NOTES SHEET A2-26 (BLDG 5-6-7) FOR  
27. SEE GENERAL NOTES SHEET A2-27 (BLDG 5-6-7) FOR  
28. SEE GENERAL NOTES SHEET A2-28 (BLDG 5-6-7) FOR  
29. SEE GENERAL NOTES SHEET A2-29 (BLDG 5-6-7) FOR  
30. SEE GENERAL NOTES SHEET A2-30 (BLDG 5-6-7) FOR  
31. SEE GENERAL NOTES SHEET A2-31 (BLDG 5-6-7) FOR  
32. SEE GENERAL NOTES SHEET A2-32 (BLDG 5-6-7) FOR  
33. SEE GENERAL NOTES SHEET A2-33 (BLDG 5-6-7) FOR  
34. SEE GENERAL NOTES SHEET A2-34 (BLDG 5-6-7) FOR  
35. SEE GENERAL NOTES SHEET A2-35 (BLDG 5-6-7) FOR  
36. SEE GENERAL NOTES SHEET A2-36 (BLDG 5-6-7) FOR  
37. SEE GENERAL NOTES SHEET A2-37 (BLDG 5-6-7) FOR  
38. SEE GENERAL NOTES SHEET A2-38 (BLDG 5-6-7) FOR  
39. SEE GENERAL NOTES SHEET A2-39 (BLDG 5-6-7) FOR  
40. SEE GENERAL NOTES SHEET A2-40 (BLDG 5-6-7) FOR  
41. SEE GENERAL NOTES SHEET A2-41 (BLDG 5-6-7) FOR  
42. SEE GENERAL NOTES SHEET A2-42 (BLDG 5-6-7) FOR  
43. SEE GENERAL NOTES SHEET A2-43 (BLDG 5-6-7) FOR  
44. SEE GENERAL NOTES SHEET A2-44 (BLDG 5-6-7) FOR  
45. SEE GENERAL NOTES SHEET A2-45 (BLDG 5-6-7) FOR  
46. SEE GENERAL NOTES SHEET A2-46 (BLDG 5-6-7) FOR  
47. SEE GENERAL NOTES SHEET A2-47 (BLDG 5-6-7) FOR  
48. SEE GENERAL NOTES SHEET A2-48 (BLDG 5-6-7) FOR  
49. SEE GENERAL NOTES SHEET A2-49 (BLDG 5-6-7) FOR  
50. SEE GENERAL NOTES SHEET A2-50 (BLDG 5-6-7) FOR  
51. SEE GENERAL NOTES SHEET A2-51 (BLDG 5-6-7) FOR  
52. SEE GENERAL NOTES SHEET A2-52 (BLDG 5-6-7) FOR  
53. SEE GENERAL NOTES SHEET A2-53 (BLDG 5-6-7) FOR  
54. SEE GENERAL NOTES SHEET A2-54 (BLDG 5-6-7) FOR  
55. SEE GENERAL NOTES SHEET A2-55 (BLDG 5-6-7) FOR  
56. SEE GENERAL NOTES SHEET A2-56 (BLDG 5-6-7) FOR  
57. SEE GENERAL NOTES SHEET A2-57 (BLDG 5-6-7) FOR  
58. SEE GENERAL NOTES SHEET A2-58 (BLDG 5-6-7) FOR  
59. SEE GENERAL NOTES SHEET A2-59 (BLDG 5-6-7) FOR  
60. SEE GENERAL NOTES SHEET A2-60 (BLDG 5-6-7) FOR  
61. SEE GENERAL NOTES SHEET A2-61 (BLDG 5-6-7) FOR  
62. SEE GENERAL NOTES SHEET A2-62 (BLDG 5-6-7) FOR  
63. SEE GENERAL NOTES SHEET A2-63 (BLDG 5-6-7) FOR  
64. SEE GENERAL NOTES SHEET A2-64 (BLDG 5-6-7) FOR  
65. SEE GENERAL NOTES SHEET A2-65 (BLDG 5-6-7) FOR  
66. SEE GENERAL NOTES SHEET A2-66 (BLDG 5-6-7) FOR  
67. SEE GENERAL NOTES SHEET A2-67 (BLDG 5-6-7) FOR  
68. SEE GENERAL NOTES SHEET A2-68 (BLDG 5-6-7) FOR  
69. SEE GENERAL NOTES SHEET A2-69 (BLDG 5-6-7) FOR  
70. SEE GENERAL NOTES SHEET A2-70 (BLDG 5-6-7) FOR  
71. SEE GENERAL NOTES SHEET A2-71 (BLDG 5-6-7) FOR  
72. SEE GENERAL NOTES SHEET A2-72 (BLDG 5-6-7) FOR  
73. SEE GENERAL NOTES SHEET A2-73 (BLDG 5-6-7) FOR  
74. SEE GENERAL NOTES SHEET A2-74 (BLDG 5-6-7) FOR  
75. SEE GENERAL NOTES SHEET A2-75 (BLDG 5-6-7) FOR  
76. SEE GENERAL NOTES SHEET A2-76 (BLDG 5-6-7) FOR  
77. SEE GENERAL NOTES SHEET A2-77 (BLDG 5-6-7) FOR  
78. SEE GENERAL NOTES SHEET A2-78 (BLDG 5-6-7) FOR  
79. SEE GENERAL NOTES SHEET A2-79 (BLDG 5-6-7) FOR  
80. SEE GENERAL NOTES SHEET A2-80 (BLDG 5-6-7) FOR  
81. SEE GENERAL NOTES SHEET A2-81 (BLDG 5-6-7) FOR  
82. SEE GENERAL NOTES SHEET A2-82 (BLDG 5-6-7) FOR  
83. SEE GENERAL NOTES SHEET A2-83 (BLDG 5-6-7) FOR  
84. SEE GENERAL NOTES SHEET A2-84 (BLDG 5-6-7) FOR  
85. SEE GENERAL NOTES SHEET A2-85 (BLDG 5-6-7) FOR  
86. SEE GENERAL NOTES SHEET A2-86 (BLDG 5-6-7) FOR  
87. SEE GENERAL NOTES SHEET A2-87 (BLDG 5-6-7) FOR  
88. SEE GENERAL NOTES SHEET A2-88 (BLDG 5-6-7) FOR  
89. SEE GENERAL NOTES SHEET A2-89 (BLDG 5-6-7) FOR  
90. SEE GENERAL NOTES SHEET A2-90 (BLDG 5-6-7) FOR  
91. SEE GENERAL NOTES SHEET A2-91 (BLDG 5-6-7) FOR  
92. SEE GENERAL NOTES SHEET A2-92 (BLDG 5-6-7) FOR  
93. SEE GENERAL NOTES SHEET A2-93 (BLDG 5-6-7) FOR  
94. SEE GENERAL NOTES SHEET A2-94 (BLDG 5-6-7) FOR  
95. SEE GENERAL NOTES SHEET A2-95 (BLDG 5-6-7) FOR  
96. SEE GENERAL NOTES SHEET A2-96 (BLDG 5-6-7) FOR  
97. SEE GENERAL NOTES SHEET A2-97 (BLDG 5-6-7) FOR  
98. SEE GENERAL NOTES SHEET A2-98 (BLDG 5-6-7) FOR  
99. SEE GENERAL NOTES SHEET A2-99 (BLDG 5-6-7) FOR  
100. SEE GENERAL NOTES SHEET A2-100 (BLDG 5-6-7) FOR

SHEET Title:  
ELEVATIONS  
SCALE: 1/8" = 1'-0"



CASE NUMBER:  
S190204

SHEET No.:  
A2-1(BLDG 5-6-7)

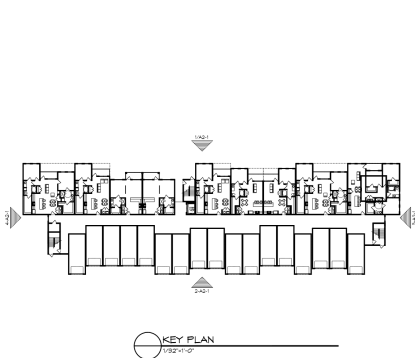
Exhibit D - Building Elevations  
Page 6 of 15



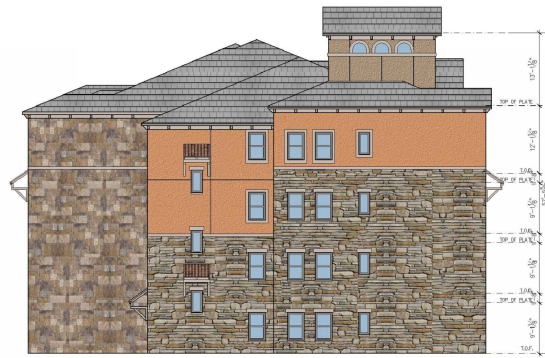
1 NORTH ELEV. - BUILDINGS 5, 6, EAST ELEV. BLDG 7  
1/8"=1'-0"



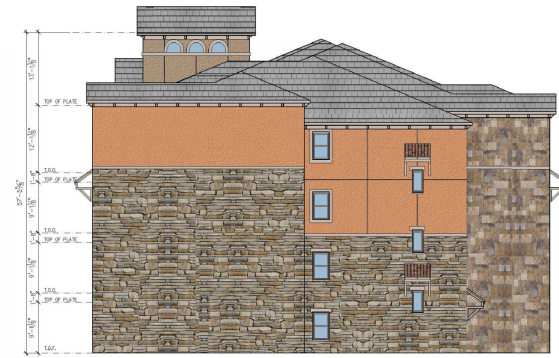
2 SOUTH ELEV. - BUILDINGS 5, 6, WEST ELEV. BLDG 7  
1/8"=1'-0"



KEY PLAN  
1/8"=1'-0"



3 EAST ELEV. - BUILDINGS 5, 6, SOUTH ELEV. BLDG 7  
1/8"=1'-0"



4 WEST ELEV. - BUILDINGS 5, 6, NORTH ELEV. BLDG 7  
1/8"=1'-0"



182445

ELEVATION  
ONE | SIX | ONE

LOT ---- BLOCK ----  
-----  
COUNTY

DATE: 8-01-10  
1-18-18 REV  
-----  
-----

GENERAL NOTES:  
1. ELEVATIONS TO BE SHOWN ALL DIMENSIONS MEASURED TO FACE UNLESS OTHERWISE NOTED.  
2. ELEVATIONS TO BE SHOWN ALL DIMENSIONS MEASURED TO FACE UNLESS OTHERWISE NOTED.  
3. ELEVATIONS TO BE SHOWN ALL DIMENSIONS MEASURED TO FACE UNLESS OTHERWISE NOTED.  
4. ELEVATIONS TO BE SHOWN ALL DIMENSIONS MEASURED TO FACE UNLESS OTHERWISE NOTED.  
5. ELEVATIONS TO BE SHOWN ALL DIMENSIONS MEASURED TO FACE UNLESS OTHERWISE NOTED.  
6. ELEVATIONS TO BE SHOWN ALL DIMENSIONS MEASURED TO FACE UNLESS OTHERWISE NOTED.  
7. ELEVATIONS TO BE SHOWN ALL DIMENSIONS MEASURED TO FACE UNLESS OTHERWISE NOTED.  
8. ELEVATIONS TO BE SHOWN ALL DIMENSIONS MEASURED TO FACE UNLESS OTHERWISE NOTED.  
9. ELEVATIONS TO BE SHOWN ALL DIMENSIONS MEASURED TO FACE UNLESS OTHERWISE NOTED.  
10. ELEVATIONS TO BE SHOWN ALL DIMENSIONS MEASURED TO FACE UNLESS OTHERWISE NOTED.

SHEET TITLE:  
COLORED  
ELEVATIONS  
SCALE: 1/8" = 1'-0"



CASE NUMBER:  
S190204

ARCHITECTS

A2-2(BLDG 5-6-7)





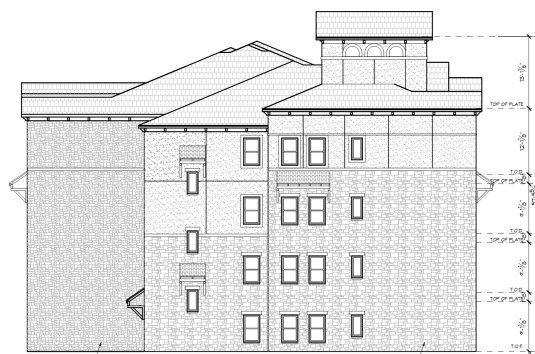
1 SOUTH ELEVATION - BUILDING 8  
1/8"=1'-0"



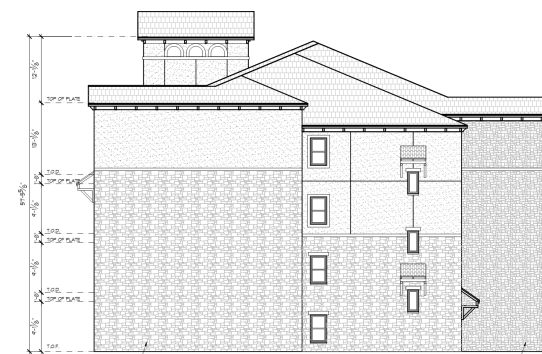
2 NORTH ELEVATION - BUILDING 'B'  
1/8"=1'-0"



KEY PLAN  
1/32"=1'-0"



3 WEST ELEVATION - BUILDING 'B'



4 EAST ELEVATION- BUILDING 'B'  
1/8"=1'-0"

### GENERAL NOTES:

1. CONTRACTOR TO VERIFY ALL DIMENSIONS PRIOR TO BEGINNING CONSTRUCTION. NOTIFY ARCHITECT ANY DISCREPANCIES IMMEDIATELY.
2. CONTRACTOR TO OBSERVE ALL APPLICABLE STATE AND LOCAL CODES AND ORDINANCES.
3. ALL ELECTRICAL OUTLETS AT FRET AREAS (INCL. DAMAGE) TO BE 5' 0".
4. ALL EXTERIOR ELECTRICAL OUTLETS TO BE 6' 0" FROM PROOF.
5. ALL GLAZING WITHIN 20" HORIZ. DISTANCE FROM JAMB OF EXTERIOR DOORS TO BE TOWERED GLAZING. ALL GLAZING PANELS TO BE 1/2" MIN. THICK.
6. ALL DIMENSIONS ARE TO FACE OF STUD OR FACE OF BRICK. ALL DIMENSIONS ARE FOR NORMAL 4" STUD (ACTUAL 3 1/2" STUD).
7. PROVIDE 1/2" MIN. JAMB IN SERIES SHOCK DETECTORS OR PERK LOCAL CODE REQUIREMENTS FOR PERIMETER AND DOOR SEALS ARE AS INDICATED OR AS NOTED.

**SHEET Title:**

ELEVATIONS

SCALE: 1/8" = 10'



219 N. WALNUT CREEK DR. WINGFELD TEXAS 79419  
817.471.1024 MEXICO 817.471.2660  
**ARCHITECT**

© COPYRIGHT 2010 NO. 10 DESIGN GROUP

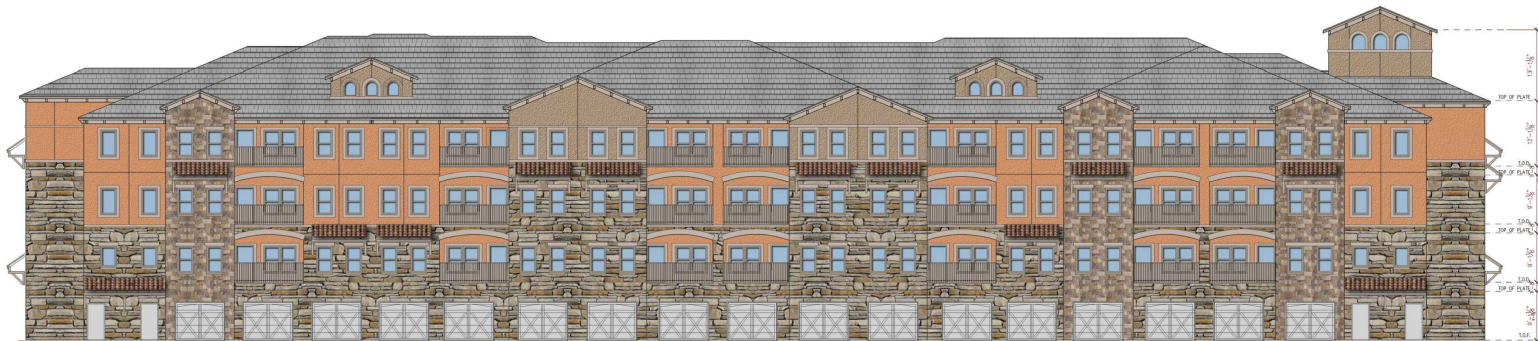
SHEET No.:  
**A2-1(BLDG 8)**

CASE NUMBER:  
S190204

Exhibit D - Building Elevations  
Page 8 of 15



1 SOUTH ELEVATION - BUILDING B  
1/8" = 1'-0"



2 NORTH ELEVATION - BUILDING B  
1/8" = 1'-0"



3 WEST ELEVATION - BUILDING B  
1/8" = 1'-0"



4 EAST ELEVATION - BUILDING B  
1/8" = 1'-0"



182995

ELEVATION  
ONE | SIX | ONE

LOT BLOCK  
COUNTY

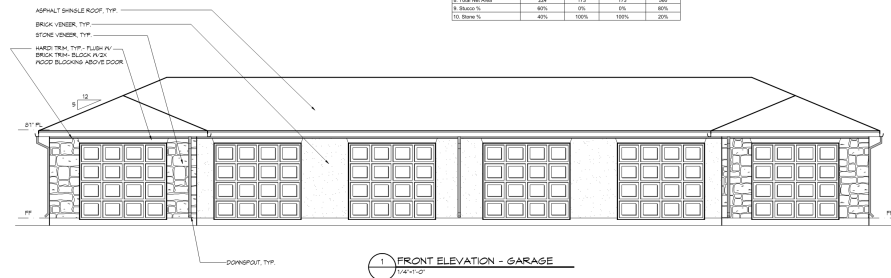
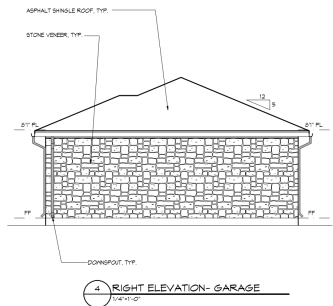
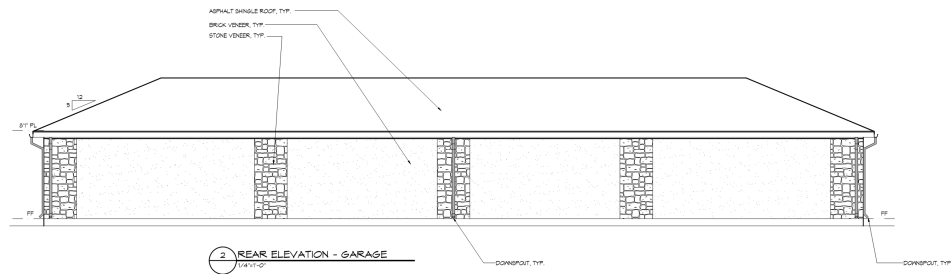
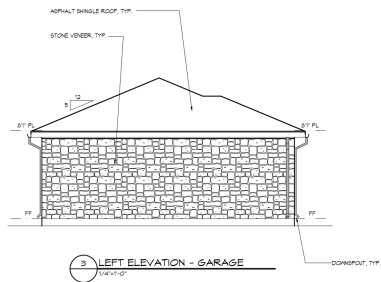
DATE: 8-21-18  
1-16-18 REV

GENERAL NOTES:  
1. REFER TO ALL NOTES ON ALL DRAWINGS.  
2. ALL DIMENSIONS ARE TO FACE UNLESS NOTED OTHERWISE.  
3. ALL DIMENSIONS ARE TO FACE UNLESS NOTED OTHERWISE.  
4. ALL DIMENSIONS ARE TO FACE UNLESS NOTED OTHERWISE.  
5. ALL DIMENSIONS ARE TO FACE UNLESS NOTED OTHERWISE.  
6. ALL DIMENSIONS ARE TO FACE UNLESS NOTED OTHERWISE.  
7. ALL DIMENSIONS ARE TO FACE UNLESS NOTED OTHERWISE.  
8. ALL DIMENSIONS ARE TO FACE UNLESS NOTED OTHERWISE.  
9. ALL DIMENSIONS ARE TO FACE UNLESS NOTED OTHERWISE.  
10. ALL DIMENSIONS ARE TO FACE UNLESS NOTED OTHERWISE.

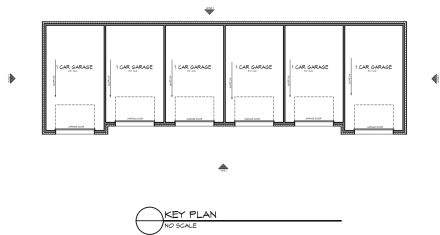
SHEET TITLE:  
COLORED  
ELEVATIONS  
SCALE: 1/8" = 1'-0"

No. 10  
DESIGN  
GROUP  
ARCHITECTS  
CASE NUMBER:  
5190204  
SHEET No.  
A2-2(BLDG 8)





MATERIAL CALCULATION				
All measurements shall be from foundation to top unless noted.				
All measurements shall be from foundation to top unless noted.				
	FRONT ELEVATION	RIGHT ELEVATION	LEFT ELEVATION	REAR ELEVATION
1. Gross Area	960	173	173	960
2. Gross Area of Stone	201	173	173	110
3. Area of Stone Openings	113	0	0	0
4. Net Stone Area	89	173	173	110
5. Gross Area of Siding	369	0	0	450
6. Area of Siding Openings	206	0	0	0
7. Net Siding Area	163	0	0	450
8. Total Net Area	254	173	173	560
9. Stone %	80%	100%	100%	80%
10. Siding %	40%	0%	0%	20%



182995

ELEVATION ONE | SIX | ONE

LOT --- BLOCK ---  
--- COUNTY

DATE: 9-24-18  
1-18-18 REV  
---

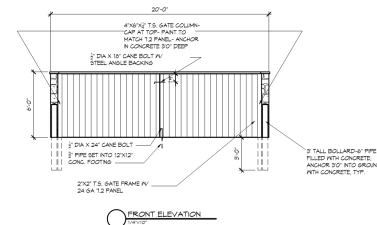
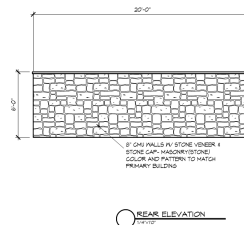
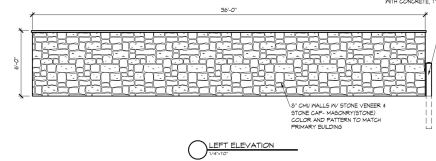
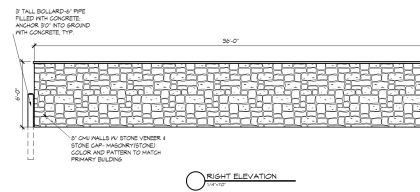
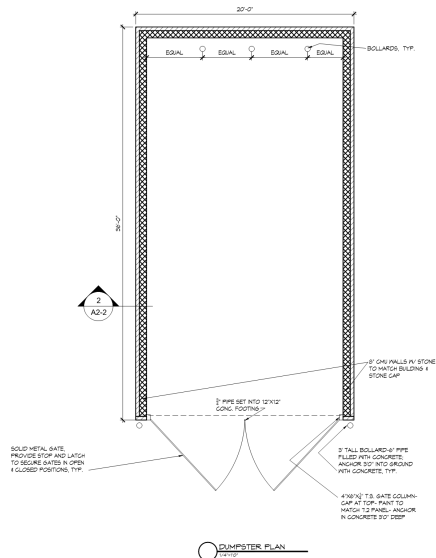
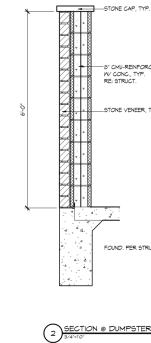
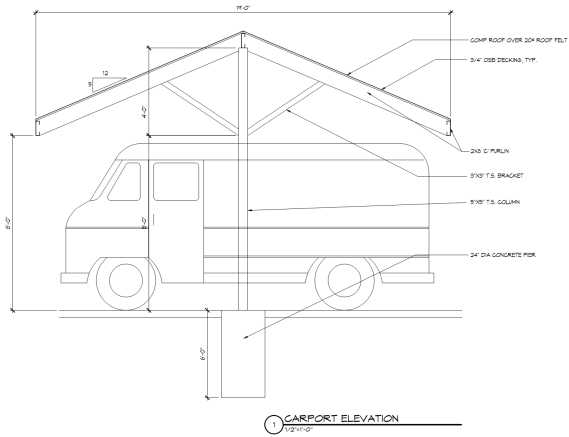
GENERAL NOTES:  
1. PROVIDE ALL DIMENSIONS IN FEET AND INCHES.  
2. PROVIDE ALL DIMENSIONS IN FEET AND INCHES.  
3. PROVIDE ALL DIMENSIONS IN FEET AND INCHES.  
4. PROVIDE ALL DIMENSIONS IN FEET AND INCHES.  
5. PROVIDE ALL DIMENSIONS IN FEET AND INCHES.  
6. PROVIDE ALL DIMENSIONS IN FEET AND INCHES.  
7. PROVIDE ALL DIMENSIONS IN FEET AND INCHES.  
8. PROVIDE ALL DIMENSIONS IN FEET AND INCHES.  
9. PROVIDE ALL DIMENSIONS IN FEET AND INCHES.  
10. PROVIDE ALL DIMENSIONS IN FEET AND INCHES.

SHEET TITLE:  
ELEVATIONS  
SCALE: 1/4" = 1'

CASE NUMBER:  
S190204

ARCHITECTS  
No. 10 DESIGN GROUP  
2114 N. HILL STREET, SUITE 100, DALLAS, TEXAS 75201  
972.414.1000  
972.414.1001

SHEET No.:  
A2-1(GA)



182945

ELEVATION  
ONE | SIX | ONE

LOT --- BLOCK ---  
--- COUNTY ---

DATE: 9-24-18  
1-16-19 REV  
---  
---

**GENERAL NOTES:**  
1. CONSTRUCTION OF THIS PROJECT SHALL BE IN ACCORDANCE WITH THE LATEST EDITIONS OF THE INTERNATIONAL BUILDING CODE (IBC) AND THE LATEST EDITIONS OF THE INTERNATIONAL RESIDENTIAL CODE (IRC).  
2. CONSTRUCTION SHALL BE IN ACCORDANCE WITH THE LATEST EDITIONS OF THE INTERNATIONAL MECHANICAL CODE (IMC) AND THE LATEST EDITIONS OF THE INTERNATIONAL PLUMBING CODE (IPC).  
3. ALL MATERIALS SHALL BE OF THE BEST QUALITY AND SHALL BE SUBJECT TO INSPECTION AND APPROVAL BY THE LOCAL BUILDING DEPARTMENT.  
4. THE OWNER SHALL BE RESPONSIBLE FOR OBTAINING ALL NECESSARY PERMITS AND APPROVALS FROM THE LOCAL BUILDING DEPARTMENT.  
5. THE OWNER SHALL BE RESPONSIBLE FOR OBTAINING ALL NECESSARY PERMITS AND APPROVALS FROM THE LOCAL BUILDING DEPARTMENT.  
6. THE OWNER SHALL BE RESPONSIBLE FOR OBTAINING ALL NECESSARY PERMITS AND APPROVALS FROM THE LOCAL BUILDING DEPARTMENT.

**SHEET Title:**  
**DUMPSTER & CARPORT**  
**ELEVATIONS**



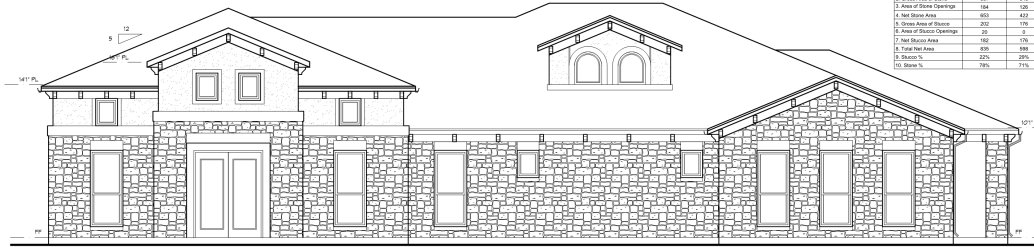
CASE NUMBER:  
S190204

SHEET No.:  
A2-2(DP & CP)

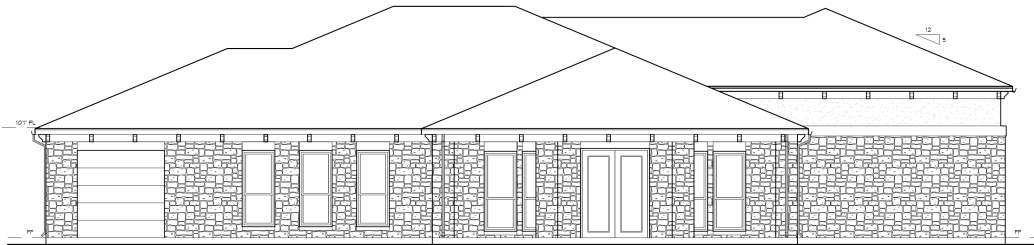


Exhibit D - Building Elevations  
Page 11 of 15

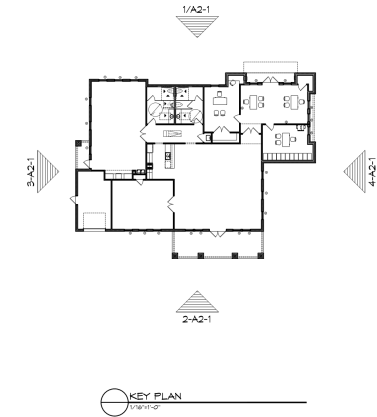
MATERIAL CALCULATION				
All measurements shall be taken from the top of the finished grade.				
All measurements shall be taken from the top of the finished grade.				
	FRONT ELEVATION	RIGHT ELEVATION	LEFT ELEVATION	REAR ELEVATION
1. Gross Area	1139	726	615	616
2. Gross Area of Stone	837	548	345	794
3. Area of Stone Openings	184	126	85	174
4. Net Stone Area	653	422	260	620
5. Gross Area of Windows	202	176	67	182
6. Area of Window Openings	20	5	0	0
7. Net Window Area	182	171	67	182
8. Total Net Area	835	593	327	802
9. Stone %	82%	82%	82%	82%
10. Stone %	78%	71%	87%	82%



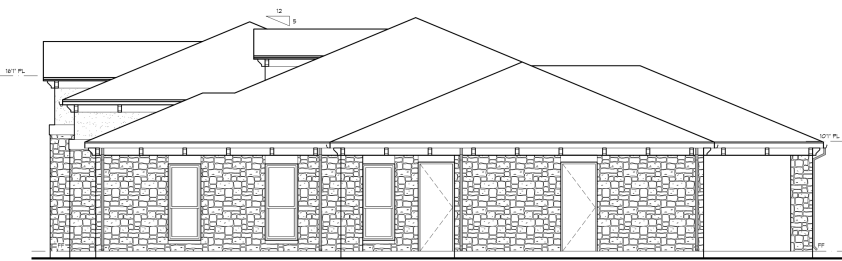
1 FRONT ELEVATION - OFFICE  
1/4" = 1'-0"



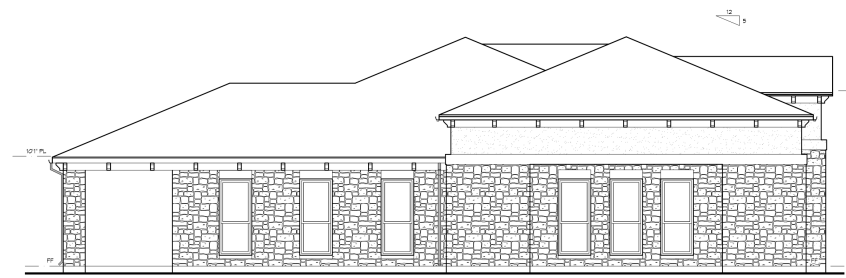
2 REAR ELEVATION - OFFICE  
1/4" = 1'-0"



KEY PLAN  
1/4" = 1'-0"



3 LEFT ELEVATION - OFFICE  
1/4" = 1'-0"



4 RIGHT ELEVATION - OFFICE  
1/4" = 1'-0"

182995

ELEVATION  
ONE | SIX | ONE

LOT BLOCK COUNTY

DATE: 8-21-18  
1/4" = 1'-0" REV

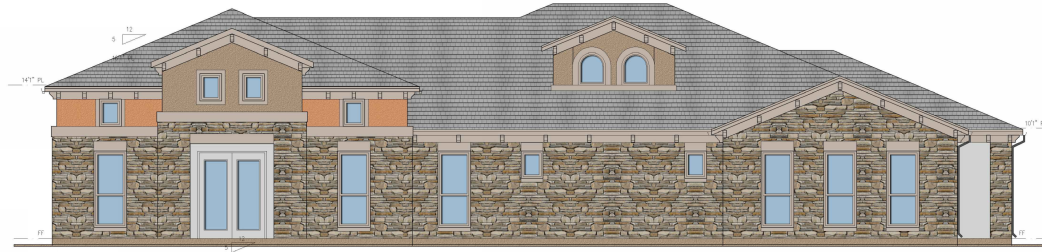
GENERAL NOTES:  
1. ALL DIMENSIONS ARE TO FACE UNLESS OTHERWISE NOTED.  
2. ALL MATERIALS SHALL BE OF THE HIGHEST QUALITY.  
3. ALL MATERIALS SHALL BE OF THE HIGHEST QUALITY.  
4. ALL MATERIALS SHALL BE OF THE HIGHEST QUALITY.  
5. ALL MATERIALS SHALL BE OF THE HIGHEST QUALITY.  
6. ALL MATERIALS SHALL BE OF THE HIGHEST QUALITY.  
7. ALL MATERIALS SHALL BE OF THE HIGHEST QUALITY.  
8. ALL MATERIALS SHALL BE OF THE HIGHEST QUALITY.  
9. ALL MATERIALS SHALL BE OF THE HIGHEST QUALITY.  
10. ALL MATERIALS SHALL BE OF THE HIGHEST QUALITY.

SHEET TITLE:  
ELEVATIONS  
SCALE: 1/4" = 1'-0"

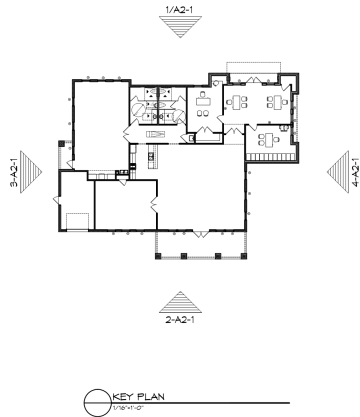
No. 10  
DESIGN  
GROUP

CASE NUMBER:  
S190204

SHEET No.:  
A2-1(OF)



FRONT ELEVATION - OFFICE  
1/4" = 1'-0"



KEY PLAN  
1/8" = 1'-0"



REAR ELEVATION - OFFICE  
1/4" = 1'-0"



LEFT ELEVATION - OFFICE  
1/4" = 1'-0"



RIGHT ELEVATION - OFFICE  
1/4" = 1'-0"



182945

ELEVATION  
ONE | SIX | ONE

LOT ---- BLOCK ----  
---- COUNTY

DATE: 8-21-18  
1-18-18 REV  
----

GENERAL NOTES:  
1. ALL WORK SHALL BE IN ACCORDANCE WITH THE LATEST EDITIONS OF THE BUILDING CODES, SPECIFICATIONS, AND STANDARDS.  
2. ALL MATERIALS SHALL BE OF THE BEST QUALITY AND SHALL BE SUBMITTED FOR APPROVAL PRIOR TO INSTALLATION.  
3. ALL ELECTRICAL WORK SHALL BE IN ACCORDANCE WITH THE LATEST EDITIONS OF THE NATIONAL ELECTRICAL CODE (NEC) AND THE TEXAS ELECTRICAL CODE.  
4. ALL MECHANICAL WORK SHALL BE IN ACCORDANCE WITH THE LATEST EDITIONS OF THE INTERNATIONAL MECHANICAL CODE (IMC) AND THE TEXAS MECHANICAL CODE.  
5. ALL PLUMBING WORK SHALL BE IN ACCORDANCE WITH THE LATEST EDITIONS OF THE INTERNATIONAL PLUMBING CODE (IPC) AND THE TEXAS PLUMBING CODE.  
6. ALL ROOFING WORK SHALL BE IN ACCORDANCE WITH THE LATEST EDITIONS OF THE INTERNATIONAL ROOFING CODE (IRC) AND THE TEXAS ROOFING CODE.  
7. ALL PAINTING WORK SHALL BE IN ACCORDANCE WITH THE LATEST EDITIONS OF THE TEXAS PAINTING CODE.  
8. ALL FINISHES SHALL BE IN ACCORDANCE WITH THE LATEST EDITIONS OF THE TEXAS FINISHES CODE.  
9. ALL WORK SHALL BE COMPLETED WITHIN THE SPECIFIED TIME FRAME.  
10. ALL WORK SHALL BE DONE IN ACCORDANCE WITH THE LATEST EDITIONS OF THE TEXAS CONSTRUCTION CODE.

SHEET TITLE:  
**COLORED ELEVATIONS**  
SCALE: 1/4" = 1'-0"

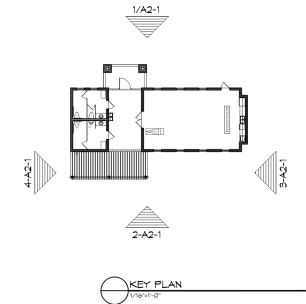
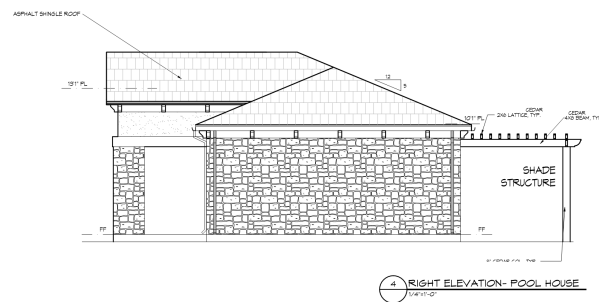
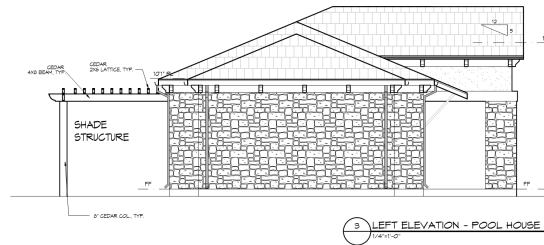
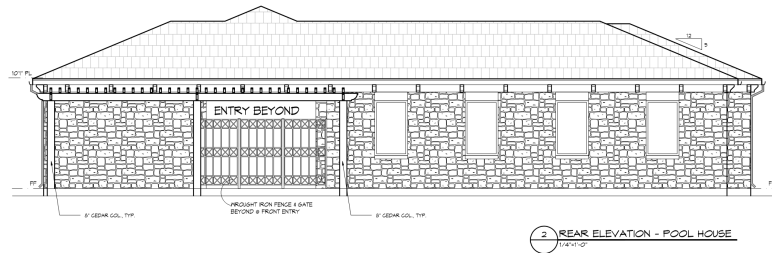


CASE NUMBER:  
S190204

SHEET No.:  
A2-2(OF)

## Page 13 of 15

MATERIAL CALCULATION				
All measurements will be from foundation to lock plates at girdes.				
All measurements shall be from foundation to lock brace at riggs.				
	FRONT ELEVATION	RIGHT ELEVATION	LEFT ELEVATION	REAR ELEVATION
1. Gross Area	665	275	275	615
2. Gross Area of Stone	535	224	224	567
3. Area of Stone Openings	179	0	0	142
4. Net Stone Area	356	204	204	425
5. Gross Area of Shallow	139	51	51	43
6. Area of Shallow Openings	10	0	0	0
7. Net Shallow Area	120	51	51	43
8. Total Net Area	476	255	255	473
9. Shallow %	25%	19%	19%	9%
10. Stone %	75%	81%	81%	91%



182995

ELEVATION  
ONE | SIX | ONE

LOT ---- BLOCK ----  
 ----  
 ---- COUNTY

DATE: 8-21-18  
1-16-18 REV  
\*\*\*\*\*  
\*\*\*\*\*  
\*\*\*\*\*

**GENERAL NOTES:**

1. CONTRACTOR TO VERIFY ALL DIMENSIONS PRIOR TO BEGINNING CONSTRUCTION NOTIFY ARCHITECT OF ANY DISCREPANCIES IMMEDIATELY.
2. COORDINATE ALL DIMENSIONS WITH APPLICABLE STATE AND LOCAL CODES AND ORDINANCES.
3. ALL ELECTRICAL OUTLETS AT NET AREAS (INCLUDING STAIRS) TO BE 4' 0" ON CENTER.
4. ALL EXTERIOR ELECTRICAL OUTLETS TO BE WEATHER PROOF.
5. ALL GLAZING WITHIN 20' HORIZ. DISTANCE FROM EDGE OF EXTERIOR DOORS TO BE THERMOPIST GLASS.
6. PLUMBING WALLS AT TOILETS TO BE 2ND STORY.
7. ALL EXTERIOR WALLS TO BE 2' MIN. THICK ON FACE OF BRICK. ALL DIMENSIONS ARE FOR NOMINAL 4" WALL (ACTUAL 3-1/2" BRICK).
8. PROVIDE TWO WIRE MESH SMOKE SHROUD DETECTORS FOR LOCAL CODE REQUIREMENTS.
9. FINISH AND FLOOR FINISH ARE AS INDICATED ON PLANS AT EACH FLOOR LOCATION.

SHEET Title:

**POOL HOUSE  
ELEVATIONS**

SCALE: 1/4" = 10'



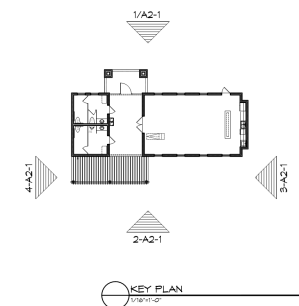
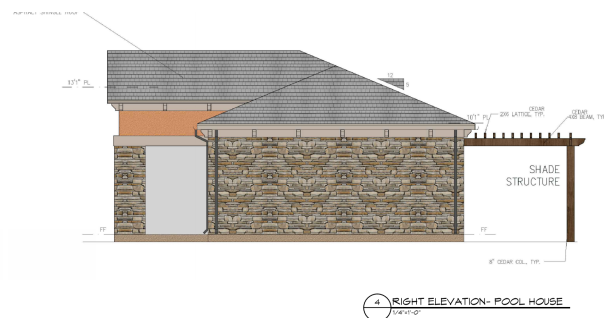
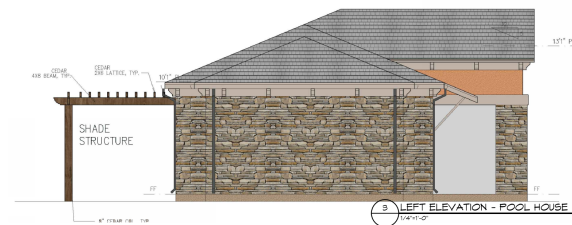
**No. 10**  
DESIGN  
GROUP

214 N. WALNUT GREEN DR. WANSFELD TEXAS 76090  
512.411.1324 METRO 512.411.5555 FAX  
**ARCHITECTS**  
COPYRIGHT 2010 NO. 13 DESIGN GROUP

A2-1(PH)

CASE NUMBER:  
S190204





**GENERAL NOTES:**

1. CONTRACTOR TO VERIFY ALL DIMENSIONS PRIOR TO BEGINNING CONSTRUCTION. NOTIFY ARCHITECT OF ANY DISCREPANCIES IMMEDIATELY.
2. ALL DIMENSIONS TO FACE UNLESS OTHERWISE SPECIFIED BY STATE AND LOCAL CODES AND ORDINANCES.
3. ALL ELECTRICAL OUTLETS AT NET AREAS (INCL. GARAGES) TO BE 5' P.I.
4. ALL EXTERIOR ELECTRICAL OUTLETS TO BE WEATHER PROOF.
5. ALL GLAZING WITHIN 20" HORIZ. DISTANCE FROM JAMB OF EXTERIOR DOORS TO BE TEMPERED GLASS.
6. ALL GLAZING WITHIN 20" HORIZ. DIST. TO BE A MIN. 1/2" THICK.
7. ALL DIMENSIONS ARE TO FACE OF STUD OR FLANGE OF BRICK. ALL DIMENSIONS ARE FOR NOMINAL 4" DIA. JACKSON 3-1/2" BRICK.
8. PROVIDE TYP. IRONED IN SERIES SHOCK DETECTORS OR PER LOCAL CODE REQUIREMENTS.
9. PANDOR AND DOOR SEALS ARE AS INDICATED ON DOOR SCHEDULE.

SHEET Title:

COLORED  
POOL HOUSE  
ELEVATIONS

**No. 10**  
**DESIGN**  
**GROUP**

274 N. PALMYRA CREEK DR. WYOMINGFIELD, TEXAS 75088  
817.477.1828 FAX: 817.477.5888 FAX

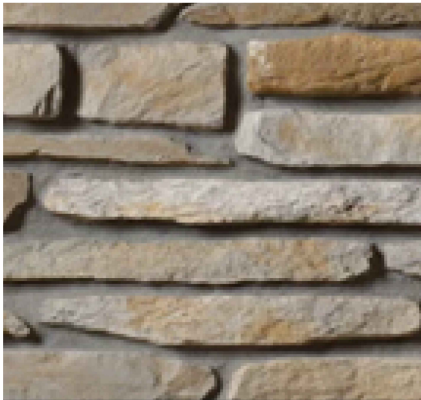
**ARCHITECTS**

© COPYRIGHT 2010 NO. 10 DESIGN GROUP

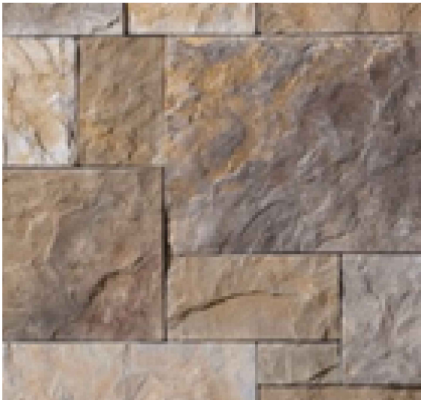
---

SHEET No. **A2-2(PH)**

CASE NUMBER:  
S190204



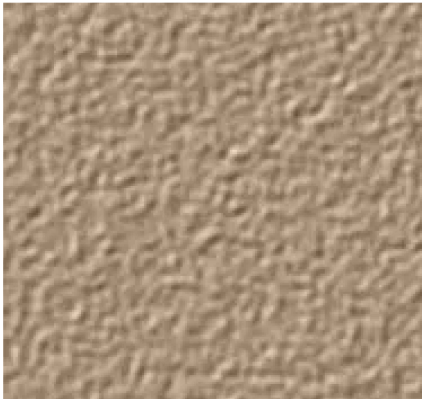
STONE TYPE '1'



STONE TYPE '2'



STUCCO- MAIN  
FIELD COLOR




STUCCO- ACCENT  
FIELD COLOR



STUCCO- TRIM  
COLOR

CASE NUMBER:  
S190204



182995

ELEVATION  
ONE | SIX | ONE


LOT --- BLOCK ---  
---  
--- COUNTY

DATE: 8-21-18

-----  
-----  
-----  
-----  
-----  
-----  
-----  
-----  
-----  
-----

GENERAL NOTES:  
1. CONTRACTOR TO VERIFY ALL DIMENSIONS PRIOR TO BEGINNING CONSTRUCTION. NOTIFY ARCHITECT OF ANY DISCREPANCIES IMMEDIATELY.  
2. CONTRACTOR TO OBSERVE ALL APPLICABLE STATE AND LOCAL CODES AND ORDINANCES.  
3. ALL ELECTRICAL OUTLETS AT KEY AREAS INCL. SWARMS TO BE 8" X 1".  
4. ALL EXTERIOR ELECTRICAL OUTLETS TO BE WEATHER PROOF.  
5. ALL GLAZING WITHIN 20" HOLE DISTANCE FROM JAMB OF EXTERIOR DOORS TO BE THERMALLY GLAZED.  
6. FUTURE WALLS AT TILES TO BE ONE BRICK.  
7. ALL DIMENSIONS ARE TO FACE OF STUD OR FACE OF BRICK. ALL DIMENSIONS ARE FOR FINISH. 4" STUD (ACTUAL 3-1/2" STUD).  
8. PROVIDE 1/4" RADIUS R CORNER SHOWN.  
9. REFERENCE TO PER LOCAL CODE REQUIREMENTS.  
10. FINISH AND DOOR SIZES ARE AS INDICATED ON PLANS AT DOOR & DOOR LOCATIONS.

SHEET Title:  
**MATERIAL  
BOARD**



218 N. WALNUT CREEK DR. | HANFORD, TEXAS 76063  
817-471-0201 (METRO) | 817-471-3883 FAX

ARCHITECTS

© COPYRIGHT 2018 NO. 10 DESIGN GROUP

SHEET No.:  
**A1-1**