

LEGAL DESCRIPTION  
GRAND PRAIRIE AND ARLINGTON CITY LIMIT LINE

ALL THAT CERTAIN TRACT OR PARCEL OF LAND BEING SITUATED IN THE WILLIAM J WHITING SURVEY, ABSTRACT NO. 1614, GARCIA MONTEZ & DURAN, ABSTRACT NO. 629, EZEKIEL ROLAND, ABSTRACT NO. 1313, WILLIAM HAYMOND, ABSTRACT NO. 642, JOHN MOODY, ABSTRACT NO. 1007, JOSIAH O'DANIEL, ABSTRACT NO. 1186, JOHN BALCH, ABSTRACT NO. 83, B. B. B. & C. RR CO., ABSTRACT NO. 203, JEROME C. LYNN, ABSTRACT NO. 972, ISAAC G BOWMAN, ABSTRACT NO. 173, S. L. FERRELL, ABSTRACT NO. 516, WALTER FERRELL, ABSTRACT NO. 537, JAMES H. HUGHES, ABSTRACT NO. 732, AND RALPH GRAVES, ABSTRACT NO. 569 CONTAINED WITHIN STATE HIGHWAY NO. 360, AS SHOWN ON THE PLAN OF PROPOSED RIGHT OF WAY PROJECT, STATE HIGHWAY 360, TARRANT COUNTY, R.W. 8002-1-24, PROJECT DESIGNATOR 3001, FROM STATE HIGHWAY 183 SOUTH TO INTERSTATE HIGHWAY 20, APPROVED APRIL 10, 1981, THE PLAN OF PROPOSED RIGHT OF WAY PROJECT, INTERSTATE 20, ACCOUNT NO. 9002-2-11, PROJECT NO. 1-20-4(78)432, PROJECT DESIGNATOR 7300, APPROVED OCTOBER 31, 1975, AND THE PLANS OF PROPOSED RIGHT OF WAY PROJECT, STATE HIGHWAY 360, R.W. 8002-1-45, FROM I20 SOUTH, APPROVED DECEMBER 11, 2007 BEING MORE PARTICULARLY DESCRIBED BY METES AND BOUNDS AS FOLLOWS:

**COMMENCING** AT A 1/2" REBAR FOUND ON THE WEST LINE OF A TRACT OF LAND DESCRIBED IN DEED TO GOLDEN DIAMOND INVESTMENT COMPANY, L.P., INSTRUMENT NO. D205248074, DEED RECORDS TARRANT COUNTY, TEXAS, SAID POINT ALSO BEING ON THE EAST RIGHT OF WAY LINE OF STATE HIGHWAY NO. 360 AT STATION 542+76.71, 470.55 FEET LEFT OF CENTERLINE, SAID POINT BEING THE BEGINNING OF A CURVE CONCAVE WESTERLY HAVING A RADIUS OF 729.17 FEET;

**THENCE** ALONG SAID CURVE, SAID WEST LINE OF GOLDEN DIAMOND TRACT AND SAID EAST LINE OF STATE HIGHWAY NO. 360 THROUGH A CENTRAL ANGLE OF 14 DEGREES 27 MINUTES 26 SECONDS, AN ARC LENGTH OF 183.99 FEET, BEING SUBTENDED BY A CHORD BEARING NORTH 16 DEGREES 07 MINUTES 09 SECONDS EAST A DISTANCE OF 183.50 FEET TO THE WESTERLY NORTHWEST CORNER OF SAID GOLDEN DIAMOND TRACT;

**THENCE** NORTH 46 DEGREES 55 MINUTES 09 SECONDS EAST A DISTANCE OF 133.79 FEET TO THE NORTHERLY NORTHWEST CORNER OF SAID GOLDEN DIAMOND TRACT, SAID POINT ALSO BEING ON SAID EAST RIGHT OF WAY LINE OF STATE HIGHWAY NO. 360 AT STATION 540+12.50, 625.27 FEET LEFT OF CENTERLINE, FROM WHICH A 1/2" REBAR WITH ALUMINUM CAP STAMPED "MLA RPLS 4873" BEARS NORTH 62 DEGREES 13 SECONDS 08 MINUTES EAST A DISTANCE OF 11.86 FEET, SAID GOLDEN DIAMOND TRACT POINT ALSO BEING **THE POINT OF BEGINNING**.

**THENCE** SOUTH 88 DEGREES 36 MINUTES 09 SECONDS WEST A DISTANCE OF 153.87 FEET TO THE BEGINNING OF A CURVE CONCAVE WESTERLY HAVING A RADIUS OF 675.73 FEET, FROM WHICH A 1/2" REBAR WITH ALUMINUM CAP STAMPED "MLA RPLS 4873" BEARS NORTH 61 DEGREES 20 SECONDS 46 MINUTES WEST A DISTANCE OF 11.18 FEET;

**THENCE** ALONG SAID CURVE THROUGH A CENTRAL ANGLE OF 19 DEGREES 56 MINUTES 16 SECONDS, AN ARC LENGTH OF 235.14 FEET, BEING SUBTENDED BY A CHORD BEARING SOUTH 12 DEGREES 11 MINUTES 40 SECONDS WEST A DISTANCE OF 233.96 FEET TO THE BEGINNING OF A CURVE CONCAVE EASTERLY HAVING A RADIUS OF 878.23 FEET;

**THENCE** ALONG SAID CURVE THROUGH A CENTRAL ANGLE OF 08 DEGREES 35 MINUTES 17 SECONDS, AN ARC LENGTH OF 131.64 FEET, BEING SUBTENDED BY A CHORD BEARING SOUTH 18 DEGREES 49 MINUTES 43 SECONDS WEST A DISTANCE OF 131.51 FEET;

**THENCE** SOUTH 22 DEGREES 01 MINUTES 16 SECONDS WEST A DISTANCE OF 296.25 FEET TO THE BEGINNING OF A CURVE CONCAVE EASTERLY HAVING A RADIUS OF 2077.93 FEET;

**THENCE** ALONG SAID CURVE THROUGH A CENTRAL ANGLE OF 18 DEGREES 09 MINUTES 54 SECONDS, AN ARC LENGTH OF 658.78 FEET, BEING SUBTENDED BY A CHORD BEARING SOUTH 07 DEGREES 14 MINUTES 54 SECONDS WEST A DISTANCE OF 656.03 FEET;

**THENCE** SOUTH 01 DEGREES 17 MINUTES 55 SECONDS EAST A DISTANCE OF 2313.64 FEET TO THE BEGINNING OF A CURVE CONCAVE EASTERLY HAVING A RADIUS OF 6193.00 FEET;

**THENCE** ALONG SAID CURVE THROUGH A CENTRAL ANGLE OF 04 DEGREES 20 MINUTES 04 SECONDS, AN ARC LENGTH OF 468.49 FEET, BEING SUBTENDED BY A CHORD BEARING SOUTH 03 DEGREES 27 MINUTES 07 SECONDS EAST A DISTANCE OF 468.38 FEET;

**THENCE** SOUTH 05 DEGREES 42 MINUTES 39 SECONDS EAST A DISTANCE OF 294.43 FEET TO THE BEGINNING OF A CURVE CONCAVE WESTERLY HAVING A RADIUS OF 9425.00 FEET;

**THENCE** ALONG SAID CURVE THROUGH A CENTRAL ANGLE OF 03 DEGREES 51 MINUTES 16 SECONDS, AN ARC LENGTH OF 634.06 FEET, BEING SUBTENDED BY A CHORD BEARING SOUTH 03 DEGREES 47 MINUTES 01 SECONDS EAST A DISTANCE OF 633.94 FEET, FROM WHICH A 1/2" REBAR WITH ALUMINUM CAP STAMPED "MLA RPLS 4873" BEARS NORTH 90 DEGREES 00 SECONDS 00 MINUTES WEST A DISTANCE OF 10.00 FEET;

**THENCE** SOUTH 02 DEGREES 19 MINUTES 09 SECONDS EAST A DISTANCE OF 132.99 FEET ;

**THENCE** SOUTH 01 DEGREES 08 MINUTES 31 SECONDS EAST A DISTANCE OF 86.19 FEET;

**THENCE** SOUTH 01 DEGREES 22 MINUTES 18 SECONDS EAST A DISTANCE OF 103.27 FEET;

**THENCE** SOUTH 01 DEGREES 16 MINUTES 52 SECONDS EAST A DISTANCE OF 74.78 FEET;

**THENCE** SOUTH 00 DEGREES 21 MINUTES 40 SECONDS EAST A DISTANCE OF 289.37 FEET;

**THENCE** SOUTH 08 DEGREES 43 MINUTES 10 SECONDS WEST A DISTANCE OF 29.76 FEET TO THE BEGINNING OF A CURVE CONCAVE EASTERLY HAVING A RADIUS OF 500.00 FEET;

**THENCE** ALONG SAID CURVE THROUGH A CENTRAL ANGLE OF 07 DEGREES 13 MINUTES 51 SECONDS, AN ARC LENGTH OF 63.10 FEET, BEING SUBTENDED BY A CHORD BEARING SOUTH 05 DEGREES 06 MINUTES 14 SECONDS WEST A DISTANCE OF 63.06 FEET TO THE BEGINNING OF A CURVE CONCAVE EASTERLY HAVING A RADIUS OF 2250.00 FEET;

**THENCE** ALONG SAID CURVE THROUGH A CENTRAL ANGLE OF 10 DEGREES 56 MINUTES 52 SECONDS, AN ARC LENGTH OF 429.91 FEET, BEING SUBTENDED BY A CHORD BEARING SOUTH 04 DEGREES 53 MINUTES 32 SECONDS WEST A DISTANCE OF 429.26 FEET, FROM WHICH A 1/2" REBAR WITH ALUMINUM CAP STAMPED "MLA RPLS 4873" BEARS NORTH 90 DEGREES 00 SECONDS 00 MINUTES WEST A DISTANCE OF 10.00 FEET;

DATE: 01/04/2019  
JOB NO.: 17110  
DRAWN BY: RTH  
SHEET 1 OF 15

GRAND PRAIRIE  
AND  
ARLINGTON  
CITY LIMIT LINE  
TARRANT COUNTY, TEXAS

MARSHALL LANCASTER & ASSOCIATES, INC.  
CONSULTING LAND SURVEYORS  
land title surveys · topography · subdivision platting  
retail, commercial and industrial construction surveying  
1864 Norwood Drive, Suite E, Hurst, TX 76054  
metro (817) 268-8000 fax (817) 282-2231 www.mla-survey.com firm no.10045100

**THENCE** SOUTH 00 DEGREES 34 MINUTES 37 SECONDS EAST A DISTANCE OF 1731.91 FEET TO THE BEGINNING OF A CURVE CONCAVE EASTERLY HAVING A RADIUS OF 1470.00 FEET, FROM WHICH A 1/2" REBAR WITH ALUMINUM CAP STAMPED "MLA RPLS 4873" BEARS NORTH 90 DEGREES 00 SECONDS 00 MINUTES WEST A DISTANCE OF 10.00 FEET;

**THENCE** ALONG SAID CURVE THROUGH A CENTRAL ANGLE OF 21 DEGREES 19 MINUTES 05 SECONDS, AN ARC LENGTH OF 546.94 FEET, BEING SUBTENDE BY A CHORD BEARING SOUTH 11 DEGREES 14 MINUTES 10 SECONDS EAST A DISTANCE OF 543.79 FEET;

**THENCE** SOUTH 21 DEGREES 53 MINUTES 42 SECONDS EAST A DISTANCE OF 205.55 FEET TO THE BEGINNING OF A CURVE CONCAVE WESTERLY HAVING A RADIUS OF 1300.00 FEET;

**THENCE** ALONG SAID CURVE THROUGH A CENTRAL ANGLE OF 20 DEGREES 59 MINUTES 41 SECONDS, AN ARC LENGTH OF 476.35 FEET, BEING SUBTENDE BY A CHORD BEARING SOUTH 11 DEGREES 23 MINUTES 51 SECONDS EAST A DISTANCE OF 473.69 FEET;

**THENCE** SOUTH 00 DEGREES 54 MINUTES 01 SECONDS EAST A DISTANCE OF 217.10 FEET TO THE BEGINNING OF A CURVE CONCAVE NORTHEASTERLY HAVING A RADIUS OF 753.00 FEET, FROM WHICH A 1/2" REBAR WITH ALUMINUM CAP STAMPED "MLA RPLS 4873" BEARS NORTH 90 DEGREES 00 SECONDS 00 MINUTES WEST A DISTANCE OF 10.00 FEET;

**THENCE** ALONG SAID CURVE THROUGH A CENTRAL ANGLE OF 75 DEGREES 43 MINUTES 33 SECONDS, AN ARC LENGTH OF 995.21 FEET, BEING SUBTENDE BY A CHORD BEARING SOUTH 38 DEGREES 45 MINUTES 48 SECONDS EAST A DISTANCE OF 924.34 FEET;

**THENCE** SOUTH 76 DEGREES 37 MINUTES 34 SECONDS EAST A DISTANCE OF 536.26 FEET TO THE BEGINNING OF A CURVE CONCAVE NORTHERLY HAVING A RADIUS OF 5975.00 FEET;

**THENCE** ALONG SAID CURVE THROUGH A CENTRAL ANGLE OF 06 DEGREES 37 MINUTES 42 SECONDS, AN ARC LENGTH OF 691.23 FEET, BEING SUBTENDE BY A CHORD BEARING SOUTH 79 DEGREES 49 MINUTES 25 SECONDS EAST A DISTANCE OF 690.84 FEET FROM WHICH A 1/2" REBAR WITH ALUMINUM CAP STAMPED "MLA RPLS 4873" BEARS SOUTH 00 DEGREES 00 SECONDS 00 MINUTES WEST A DISTANCE OF 10.00 FEET;

**THENCE** SOUTH 00 DEGREES 00 MINUTES 00 SECONDS WEST A DISTANCE OF 340.87 FEET TO THE BEGINNING OF A CURVE CONCAVE SOUTHERLY HAVING A RADIUS OF 2910.00 FEET, FROM WHICH A 1/2" REBAR WITH ALUMINUM CAP STAMPED "MLA RPLS 4873" BEARS NORTH 00 DEGREES 00 SECONDS 00 MINUTES WEST A DISTANCE OF 10.00 FEET;

**THENCE** ALONG SAID CURVE THROUGH A CENTRAL ANGLE OF 17 DEGREES 26 MINUTES 46 SECONDS, AN ARC LENGTH OF 886.07 FEET, BEING SUBTENDE BY A CHORD BEARING SOUTH 76 DEGREES 26 MINUTES 47 SECONDS WEST A DISTANCE OF 882.65 FEET TO THE BEGINNING OF A CURVE CONCAVE SOUTHEASTERLY HAVING A RADIUS OF 757.00 FEET;

**THENCE** ALONG SAID CURVE THROUGH A CENTRAL ANGLE OF 64 DEGREES 46 MINUTES 38 SECONDS, AN ARC LENGTH OF 855.85 FEET, BEING SUBTENDE BY A CHORD BEARING SOUTH 34 DEGREES 36 MINUTES 37 SECONDS WEST A DISTANCE OF 810.99 FEET;

**THENCE** SOUTH 02 DEGREES 56 MINUTES 11 SECONDS WEST A DISTANCE OF 211.22 FEET TO THE BEGINNING OF A CURVE CONCAVE WESTERLY HAVING A RADIUS OF 923.00 FEET;

**THENCE** ALONG SAID CURVE THROUGH A CENTRAL ANGLE OF 38 DEGREES 16 MINUTES 31 SECONDS, AN ARC LENGTH OF 616.59 FEET, BEING SUBTENDE BY A CHORD BEARING SOUTH 22 DEGREES 04 MINUTES 26 SECONDS WEST A DISTANCE OF 605.19 FEET FROM WHICH A 1/2" REBAR WITH ALUMINUM CAP STAMPED "MLA RPLS 4873" BEARS NORTH 90 DEGREES 00 SECONDS 00 MINUTES WEST A DISTANCE OF 10.00 FEET;

**THENCE** SOUTH 41 DEGREES 12 MINUTES 41 SECONDS WEST A DISTANCE OF 160.66 FEET TO THE BEGINNING OF A CURVE CONCAVE EASTERLY HAVING A RADIUS OF 1492.00 FEET;

**THENCE** ALONG SAID CURVE THROUGH A CENTRAL ANGLE OF 41 DEGREES 42 MINUTES 50 SECONDS, AN ARC LENGTH OF 1086.24 FEET, BEING SUBTENDE BY A CHORD BEARING SOUTH 20 DEGREES 21 MINUTES 17 SECONDS WEST A DISTANCE OF 1062.41 FEET;

**THENCE** SOUTH 00 DEGREES 30 MINUTES 08 SECONDS EAST A DISTANCE OF 447.53 FEET, FROM WHICH A 1/2" REBAR WITH ALUMINUM CAP STAMPED "MLA RPLS 4873" BEARS NORTH 90 DEGREES 00 SECONDS 00 MINUTES WEST A DISTANCE OF 10.00 FEET;

**THENCE** SOUTH 89 DEGREES 29 MINUTES 52 SECONDS WEST A DISTANCE OF 316.43 FEET, FROM WHICH A 1/2" REBAR WITH ALUMINUM CAP STAMPED "MLA RPLS 4873" BEARS NORTH 90 DEGREES 00 SECONDS 00 MINUTES EAST A DISTANCE OF 10.00 FEET;

**THENCE** SOUTH 00 DEGREES 24 MINUTES 07 SECONDS EAST A DISTANCE OF 1398.46 FEET;

**THENCE** SOUTH 02 DEGREES 43 MINUTES 37 SECONDS EAST A DISTANCE OF 297.78 FEET;

**THENCE** SOUTH 00 DEGREES 44 MINUTES 22 SECONDS EAST A DISTANCE OF 277.89 FEET;

**THENCE** SOUTH 02 DEGREES 21 MINUTES 07 SECONDS EAST A DISTANCE OF 261.95 FEET;

**THENCE** SOUTH 04 DEGREES 10 MINUTES 20 SECONDS EAST A DISTANCE OF 68.72 FEET;

**THENCE** SOUTH 01 DEGREES 28 MINUTES 46 SECONDS WEST A DISTANCE OF 109.99 FEET TO THE BEGINNING OF A CURVE CONCAVE EASTERLY HAVING A RADIUS OF 5000.00 FEET;

**THENCE** ALONG SAID CURVE THROUGH A CENTRAL ANGLE OF 06 DEGREES 26 MINUTES 07 SECONDS, AN ARC LENGTH OF 561.58 FEET, BEING SUBTENDE BY A CHORD BEARING SOUTH 08 DEGREES 28 MINUTES 25 SECONDS EAST A DISTANCE OF 561.29 FEET, FROM WHICH A 1/2" REBAR WITH ALUMINUM CAP STAMPED "MLA RPLS 4873" BEARS NORTH 90 DEGREES 00 SECONDS 00 MINUTES EAST A DISTANCE OF 10.00 FEET;

**THENCE** SOUTH 07 DEGREES 57 MINUTES 14 SECONDS EAST A DISTANCE OF 472.00 FEET;

**THENCE** SOUTH 05 DEGREES 01 MINUTES 55 SECONDS EAST A DISTANCE OF 2303.41 FEET TO THE BEGINNING OF A CURVE CONCAVE WESTERLY HAVING A RADIUS OF 1250.00 FEET, FROM WHICH A 1/2" REBAR WITH ALUMINUM CAP STAMPED "MLA RPLS 4873" BEARS NORTH 90 DEGREES 00 SECONDS 00 MINUTES EAST A DISTANCE OF 10.00 FEET;

DATE: 01/04/2019  
JOB NO.: 17110  
DRAWN BY: RTH  
SHEET 2 OF 15

GRAND PRAIRIE  
AND  
ARLINGTON  
CITY LIMIT LINE  
TARRANT COUNTY, TEXAS

MARSHALL LANCASTER & ASSOCIATES, INC.  
CONSULTING LAND SURVEYORS  
land title surveys · topography · subdivision platting  
retail, commercial and industrial construction surveying  
1864 Norwood Drive, Suite E, Hurst, TX 76054  
metro (817) 268-8000 fax (817) 282-2231 www.mla-survey.com firm no.10045100

**THENCE** ALONG SAID CURVE THROUGH A CENTRAL ANGLE OF 33 DEGREES 04 MINUTES 18 SECONDS, AN ARC LENGTH OF 721.51 FEET, BEING SUBTENDE BY A CHORD BEARING SOUTH 11 DEGREES 30 MINUTES 14 SECONDS WEST A DISTANCE OF 711.54 FEET;

**THENCE** SOUTH 37 DEGREES 52 MINUTES 17 SECONDS WEST A DISTANCE OF 185.59 FEET TO THE BEGINNING OF A CURVE CONCAVE EASTERLY HAVING A RADIUS OF 900.00 FEET;

**THENCE** ALONG SAID CURVE THROUGH A CENTRAL ANGLE OF 31 DEGREES 19 MINUTES 13 SECONDS, AN ARC LENGTH OF 491.98 FEET, BEING SUBTENDE BY A CHORD BEARING SOUTH 22 DEGREES 12 MINUTES 41 SECONDS WEST A DISTANCE OF 485.88 FEET;

**THENCE** SOUTH 06 DEGREES 33 MINUTES 04 SECONDS WEST A DISTANCE OF 162.89 FEET TO THE BEGINNING OF A CURVE CONCAVE EASTERLY HAVING A RADIUS OF 1151.04 FEET;

**THENCE** ALONG SAID CURVE THROUGH A CENTRAL ANGLE OF 04 DEGREES 38 MINUTES 58 SECONDS, AN ARC LENGTH OF 93.40 FEET, BEING SUBTENDE BY A CHORD BEARING SOUTH 06 DEGREES 51 MINUTES 27 SECONDS EAST A DISTANCE OF 93.38 FEET;

**THENCE** SOUTH 11 DEGREES 58 MINUTES 49 SECONDS EAST A DISTANCE OF 274.86 FEET TO THE BEGINNING OF A CURVE CONCAVE WESTERLY HAVING A RADIUS OF 2900.00 FEET, FROM WHICH A 1/2" REBAR WITH ALUMINUM CAP STAMPED "MLA RPLS 4873" BEARS NORTH 90 DEGREES 00 SECONDS 00 MINUTES EAST A DISTANCE OF 10.00 FEET;

**THENCE** ALONG SAID CURVE THROUGH A CENTRAL ANGLE OF 10 DEGREES 17 MINUTES 00 SECONDS, AN ARC LENGTH OF 520.48 FEET, BEING SUBTENDE BY A CHORD BEARING SOUTH 06 DEGREES 50 MINUTES 19 SECONDS EAST A DISTANCE OF 519.78 FEET;

**THENCE** SOUTH 00 DEGREES 22 MINUTES 21 SECONDS EAST A DISTANCE OF 417.93 FEET TO THE BEGINNING OF A CURVE CONCAVE WESTERLY HAVING A RADIUS OF 11696.18 FEET;

**THENCE** ALONG SAID CURVE THROUGH A CENTRAL ANGLE OF 07 DEGREES 44 MINUTES 58 SECONDS, AN ARC LENGTH OF 1581.96 FEET, BEING SUBTENDE BY A CHORD BEARING SOUTH 05 DEGREES 24 MINUTES 17 SECONDS WEST A DISTANCE OF 1580.76 FEET, FROM WHICH A 1/2" REBAR WITH ALUMINUM CAP STAMPED "MLA RPLS 4873" BEARS NORTH 90 DEGREES 00 SECONDS 00 MINUTES EAST A DISTANCE OF 10.00 FEET;

**THENCE** SOUTH 09 DEGREES 22 MINUTES 20 SECONDS WEST A DISTANCE OF 259.55 FEET TO THE BEGINNING OF A CURVE CONCAVE WESTERLY HAVING A RADIUS OF 5788.00 FEET;

**THENCE** ALONG SAID CURVE THROUGH A CENTRAL ANGLE OF 10 DEGREES 08 MINUTES 24 SECONDS, AN ARC LENGTH OF 1024.34 FEET, BEING SUBTENDE BY A CHORD BEARING SOUTH 12 DEGREES 22 MINUTES 33 SECONDS WEST A DISTANCE OF 1023.00 FEET, FROM WHICH A 1/2" REBAR WITH ALUMINUM CAP STAMPED "MLA RPLS 4873" BEARS NORTH 90 DEGREES 00 SECONDS 00 MINUTES EAST A DISTANCE OF 10.00 FEET;

**THENCE** SOUTH 14 DEGREES 14 MINUTES 51 SECONDS WEST A DISTANCE OF 399.31 FEET;

**THENCE** SOUTH 12 DEGREES 59 MINUTES 25 SECONDS WEST A DISTANCE OF 152.15 FEET;

**THENCE** SOUTH 05 DEGREES 10 MINUTES 54 SECONDS WEST A DISTANCE OF 118.68 FEET;

**THENCE** SOUTH 00 DEGREES 50 MINUTES 22 SECONDS WEST A DISTANCE OF 164.20 FEET TO THE BEGINNING OF A CURVE CONCAVE WESTERLY HAVING A RADIUS OF 1925.00 FEET, FROM WHICH A 1/2" REBAR WITH ALUMINUM CAP STAMPED "MLA RPLS 4873" BEARS NORTH 90 DEGREES 00 SECONDS 00 MINUTES EAST A DISTANCE OF 10.00 FEET;

**THENCE** ALONG SAID CURVE THROUGH A CENTRAL ANGLE OF 21 DEGREES 33 MINUTES 39 SECONDS, AN ARC LENGTH OF 724.39 FEET, BEING SUBTENDE BY A CHORD BEARING SOUTH 11 DEGREES 37 MINUTES 12 SECONDS WEST A DISTANCE OF 720.13 FEET;

**THENCE** SOUTH 22 DEGREES 24 MINUTES 01 SECONDS WEST A DISTANCE OF 209.71 FEET TO THE BEGINNING OF A CURVE CONCAVE NORTHWESTERLY HAVING A RADIUS OF 4500.00 FEET;

**THENCE** ALONG SAID CURVE THROUGH A CENTRAL ANGLE OF 10 DEGREES 51 MINUTES 40 SECONDS, AN ARC LENGTH OF 853.03 FEET, BEING SUBTENDE BY A CHORD BEARING SOUTH 27 DEGREES 49 MINUTES 51 SECONDS WEST A DISTANCE OF 851.76 FEET, FROM WHICH A 1/2" REBAR WITH ALUMINUM CAP STAMPED "MLA RPLS 4873" BEARS NORTH 90 DEGREES 00 SECONDS 00 MINUTES EAST A DISTANCE OF 15.00 FEET;

**THENCE** SOUTH 33 DEGREES 15 MINUTES 41 SECONDS WEST A DISTANCE OF 710.67 FEET;

**THENCE** SOUTH 33 DEGREES 13 MINUTES 09 SECONDS WEST A DISTANCE OF 2804.53 FEET;

**THENCE** SOUTH 29 DEGREES 25 MINUTES 57 SECONDS WEST A DISTANCE OF 322.49 FEET TO THE BEGINNING OF A CURVE CONCAVE EASTERLY HAVING A RADIUS OF 6040.00 FEET;

**THENCE** ALONG SAID CURVE THROUGH A CENTRAL ANGLE OF 31 DEGREES 23 MINUTES 47 SECONDS, AN ARC LENGTH OF 3309.75 FEET, BEING SUBTENDE BY A CHORD BEARING SOUTH 14 DEGREES 26 MINUTES 14 SECONDS WEST A DISTANCE OF 3268.50 FEET TO THE BEGINNING OF A CURVE CONCAVE WESTERLY HAVING A RADIUS OF 2740.00 FEET;

**THENCE** ALONG SAID CURVE THROUGH A CENTRAL ANGLE OF 04 DEGREES 42 MINUTES 40 SECONDS, AN ARC LENGTH OF 225.30 FEET, BEING SUBTENDE BY A CHORD BEARING SOUTH 04 DEGREES 19 MINUTES 41 SECONDS WEST A DISTANCE OF 225.24 FEET TO THE BEGINNING OF A CURVE CONCAVE WESTERLY HAVING A RADIUS OF 2963.18 FEET, FROM WHICH A 1/2" REBAR WITH ALUMINUM CAP STAMPED "MLA RPLS 4873" BEARS NORTH 90 DEGREES 00 SECONDS 00 MINUTES EAST A DISTANCE OF 10.00 FEET;

**THENCE** ALONG SAID CURVE THROUGH A CENTRAL ANGLE OF 07 DEGREES 28 MINUTES 28 SECONDS, AN ARC LENGTH OF 386.56 FEET, BEING SUBTENDE BY A CHORD BEARING SOUTH 10 DEGREES 13 MINUTES 29 SECONDS WEST A DISTANCE OF 386.29 FEET;

**THENCE** SOUTH 17 DEGREES 34 MINUTES 38 SECONDS WEST A DISTANCE OF 454.17 FEET TO THE BEGINNING OF A CURVE CONCAVE EASTERLY HAVING A RADIUS OF 1015.00 FEET;

**THENCE** ALONG SAID CURVE THROUGH A CENTRAL ANGLE OF 33 DEGREES 48 MINUTES 32 SECONDS, AN ARC LENGTH OF 598.93 FEET, BEING SUBTENDE BY A CHORD BEARING SOUTH 00 DEGREES 03 MINUTES 35 SECONDS WEST A DISTANCE OF 590.27 FEET;

DATE: 01/04/2019  
JOB NO.: 17110  
DRAWN BY: RTH  
SHEET 3 OF 15

**GRAND PRAIRIE  
AND  
ARLINGTON  
CITY LIMIT LINE  
TARRANT COUNTY, TEXAS**

**MARSHALL LANCASTER & ASSOCIATES, INC.**  
**CONSULTING LAND SURVEYORS**  
land title surveys · topography · subdivision platting  
retail, commercial and industrial construction surveying  
1864 Norwood Drive, Suite E, Hurst, TX 76054  
metro (817) 268-8000 fax (817) 282-2231 [www.mla-survey.com](http://www.mla-survey.com) firm no.10045100

THENCE SOUTH 14 DEGREES 56 MINUTES 43 SECONDS EAST A DISTANCE OF 288.44 FEET TO THE BEGINNING OF A CURVE CONCAVE WESTERLY HAVING A RADIUS OF 1650.00 FEET, FROM WHICH A 1/2" REBAR WITH ALUMINUM CAP STAMPED "MLA RPLS 4873" BEARS NORTH 90 DEGREES 00 SECONDS 00 MINUTES EAST A DISTANCE OF 10.00 FEET;

THENCE ALONG SAID CURVE THROUGH A CENTRAL ANGLE OF 16 DEGREES 54 MINUTES 33 SECONDS, AN ARC LENGTH OF 486.95 FEET, BEING SUBTENDED BY A CHORD BEARING SOUTH 06 DEGREES 29 MINUTES 26 SECONDS EAST A DISTANCE OF 485.18 FEET;

THENCE SOUTH 01 DEGREES 57 MINUTES 50 SECONDS WEST A DISTANCE OF 1642.12 FEET;

THENCE SOUTH 00 DEGREES 05 MINUTES 16 SECONDS WEST A DISTANCE OF 383.77 FEET;

THENCE SOUTH 01 DEGREES 57 MINUTES 15 SECONDS WEST A DISTANCE OF 2032.11 FEET, FROM WHICH A 1/2" REBAR WITH ALUMINUM CAP STAMPED "MLA RPLS 4873" BEARS NORTH 90 DEGREES 00 SECONDS 00 MINUTES EAST A DISTANCE OF 10.00 FEET;

THENCE SOUTH 03 DEGREES 50 MINUTES 25 SECONDS WEST A DISTANCE OF 382.41 FEET;

THENCE SOUTH 01 DEGREES 57 MINUTES 46 SECONDS WEST A DISTANCE OF 1248.54 FEET, FROM WHICH A 1/2" REBAR WITH ALUMINUM CAP STAMPED "MLA RPLS 4873" BEARS NORTH 90 DEGREES 00 SECONDS 00 MINUTES EAST A DISTANCE OF 10.00 FEET;

THENCE NORTH 89 DEGREES 32 MINUTES 53 SECONDS WEST A DISTANCE OF 106.51 FEET TO THE WEST RIGHT OF WAY LINE OF STATE HIGHWAY NO. 360 AT STATION NO. 971+01.00, 279.92 FEET RIGHT OF CENTERLINE.

GENERAL NOTES

- 1. THE BASIS OF BEARINGS FOR THIS SURVEY IS THE TEXAS COORDINATE SYSTEM NORTH CENTRAL ZONE (NAD 83) DERIVED FROM GPS OBSERVATIONS USING THE DALLAS/FORT WORTH AREA VIRTUAL REFERENCE NETWORK (VRN). THE VRN IS MAINTAINED BY ALLTERRA AND IS BASED ON TEXAS DEPARTMENT OF TRANSPORTATION REGIONAL REFERENCE POINTS (RRP).
- 2. OWNERSHIP REFERENCES SHOWN HEREON ARE BASED ON TARRANT APPRAISAL DISTRICT WEB PAGE DATA (WWW.TAD.ORG).
- 3. THIS SURVEY WAS PREPARED WITHOUT THE BENEFIT OF TITLE RESEARCH. EASEMENTS AND OTHER TITLE ENCUMBRANCES, BOTH RECORDED AND UNRECORDED, MAY EXIST THAT ARE NOT SHOWN ON THIS SURVEY.
- 4. IMPROVEMENTS MAY EXIST THAT ARE NOT SHOWN ON THIS EXHIBIT.
- 5. THIS DOCUMENT WAS PREPARED UNDER 22 TAC §663.21, DOES NOT REFLECT THE RESULTS OF AN ON THE GROUND SURVEY, AND IS NOT TO BE USED TO CONVEY OR ESTABLISH INTERESTS IN REAL PROPERTY EXCEPT THOSE RIGHTS AND INTERESTS IMPLIED OR ESTABLISHED BY THE CREATION OR RECONFIGURATION OF THE BOUNDARY OF THE POLITICAL SUBDIVISION FOR WHICH IT WAS PREPARED.

MARSHALL LANCASTER  
TEXAS REGISTERED PROFESSIONAL LAND SURVEYOR, NO. 6583  
DATE: JANUARY 4, 2019



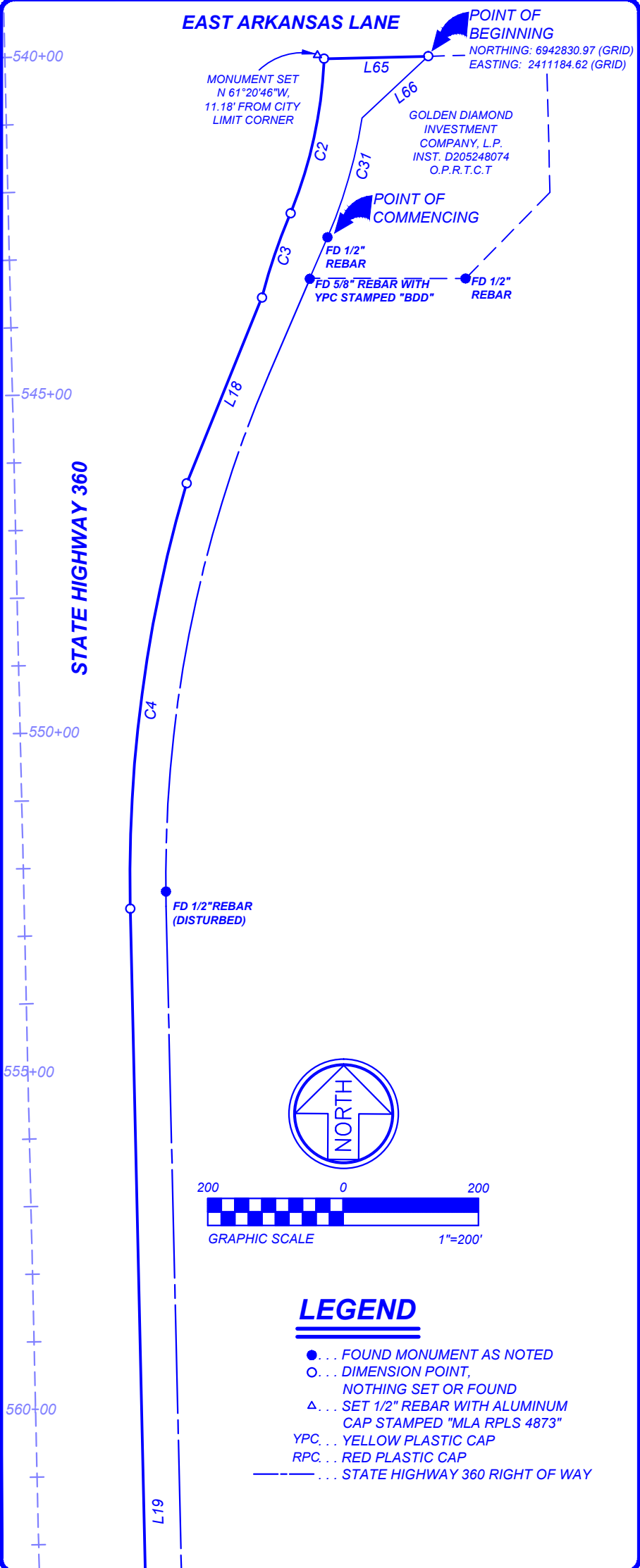
DATE: 01/04/2019  
JOB NO.: 17110  
DRAWN BY: RTH  
SHEET 4 OF 15

GRAND PRAIRIE  
AND  
ARLINGTON  
CITY LIMIT LINE  
TARRANT COUNTY, TEXAS

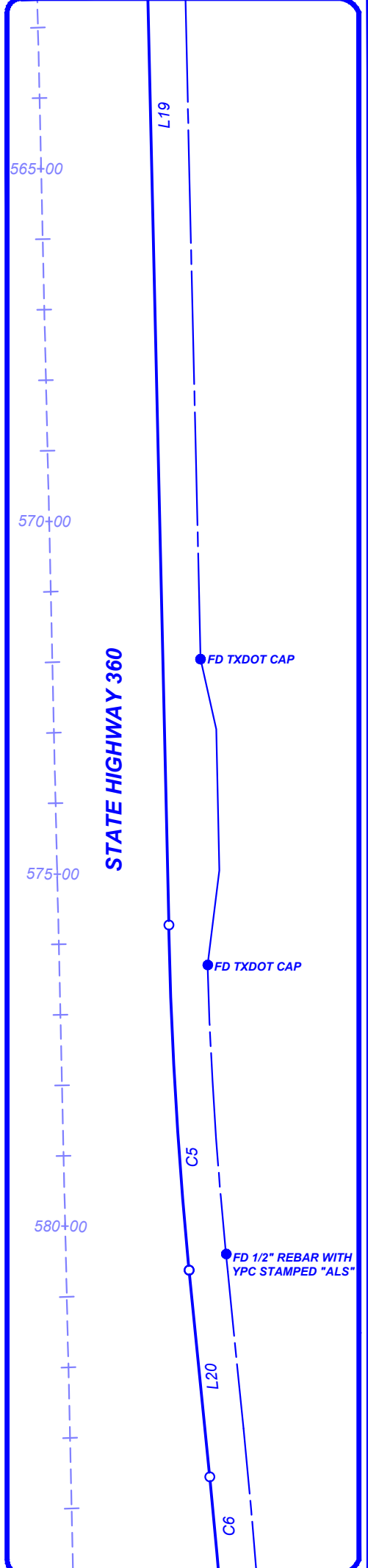
MARSHALL LANCASTER & ASSOCIATES, INC.  
CONSULTING LAND SURVEYORS  
land title surveys · topography · subdivision platting  
retail, commercial and industrial construction surveying  
1864 Norwood Drive, Suite E, Hurst, TX 76054  
metro (817) 268-8000 fax (817) 282-2231 www.mla-survey.com firm no.10045100



# DETAIL 1



# DETAIL 2



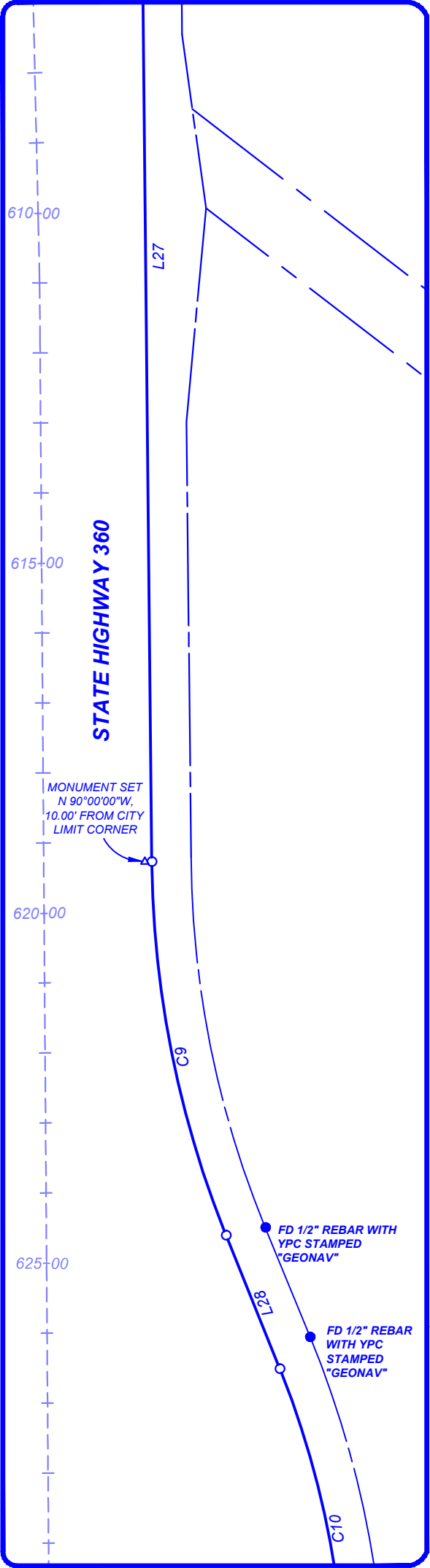
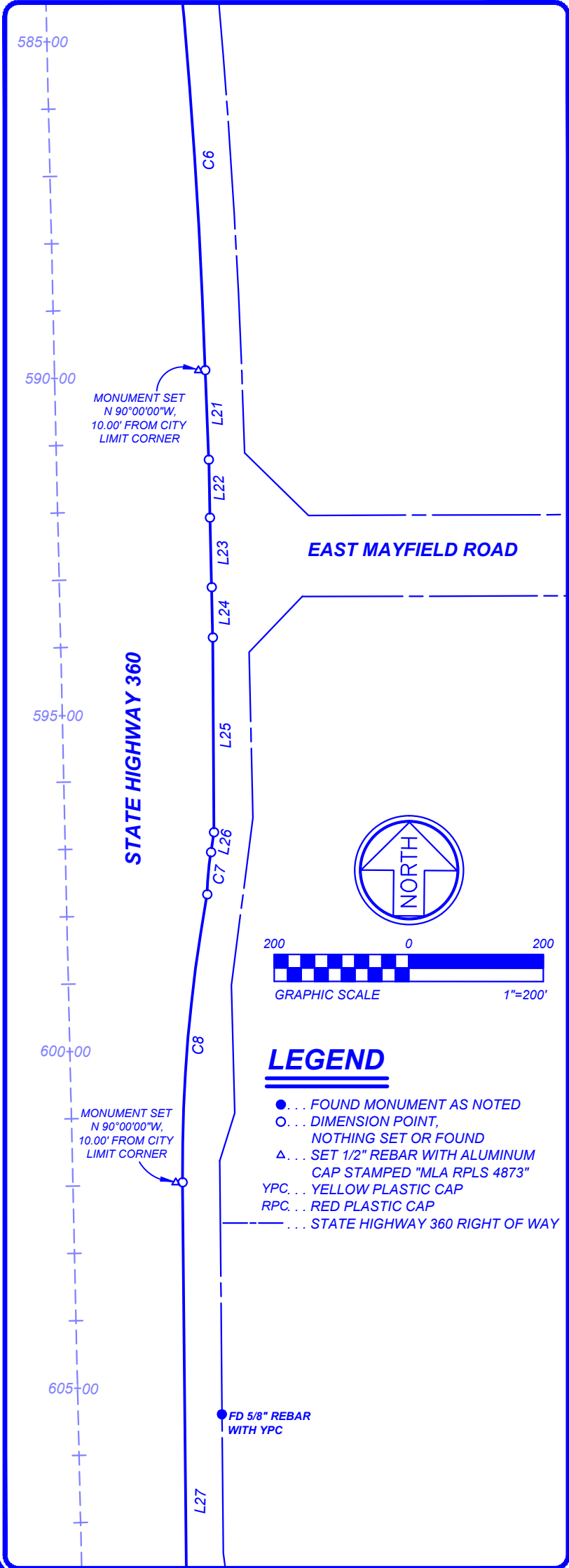
DATE: 01/04/2019  
JOB NO.: 17110  
DRAWN BY: RTH  
SHEET 5 OF 15

**GRAND PRAIRIE  
AND  
ARLINGTON  
CITY LIMIT LINE**  
TARRANT COUNTY, TEXAS

**MARSHALL LANCASTER & ASSOCIATES, INC.**  
CONSULTING LAND SURVEYORS  
land title surveys · topography · subdivision platting  
retail, commercial and industrial construction surveying  
1864 Norwood Drive, Suite E, Hurst, TX 76054  
metro (817) 268-8000 fax (817) 282-2231 [www.mla-survey.com](http://www.mla-survey.com) firm no.10045100

DETAIL 3

DETAIL 4

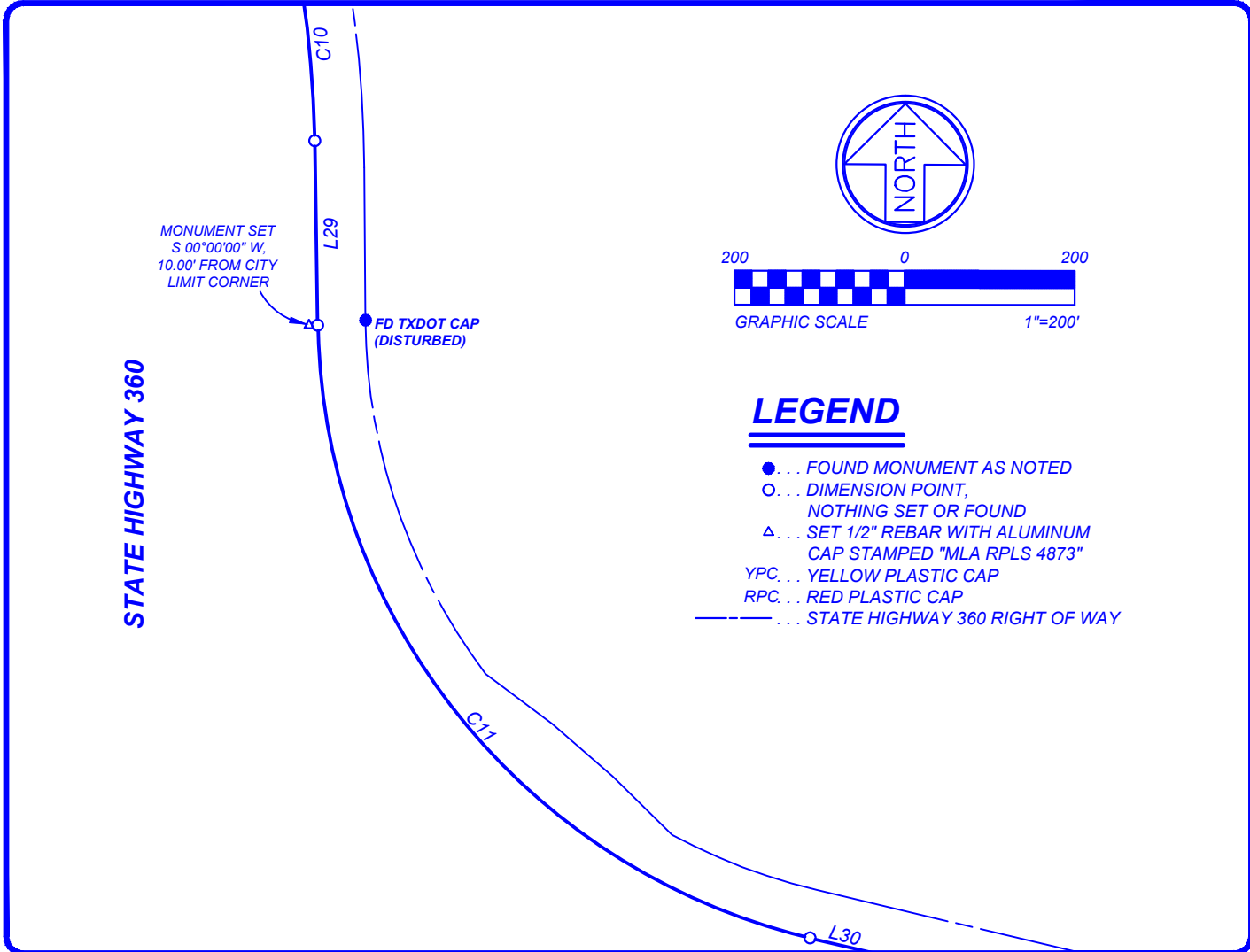


DATE: 01/04/2019  
JOB NO.: 17110  
DRAWN BY: RTH  
SHEET 6 OF 15

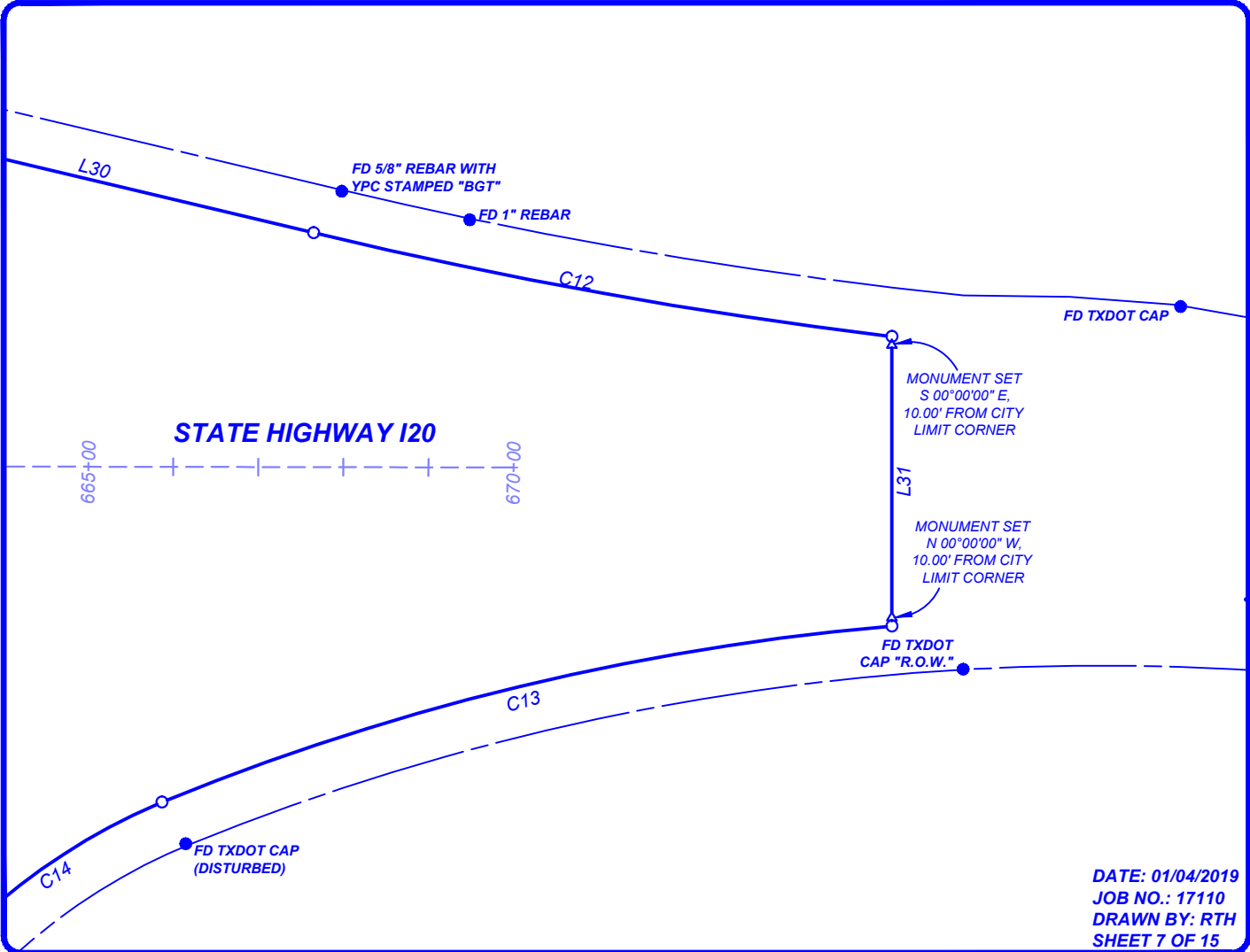
GRAND PRAIRIE  
AND  
ARLINGTON  
CITY LIMIT LINE  
TARRANT COUNTY, TEXAS

MARSHALL LANCASTER & ASSOCIATES, INC.  
CONSULTING LAND SURVEYORS  
land title surveys · topography · subdivision platting  
retail, commercial and industrial construction surveying  
1864 Norwood Drive, Suite E, Hurst, TX 76054  
metro (817) 268-8000 fax (817) 282-2231 [www.mla-survey.com](http://www.mla-survey.com) firm no.10045100

DETAIL 5



DETAIL 6

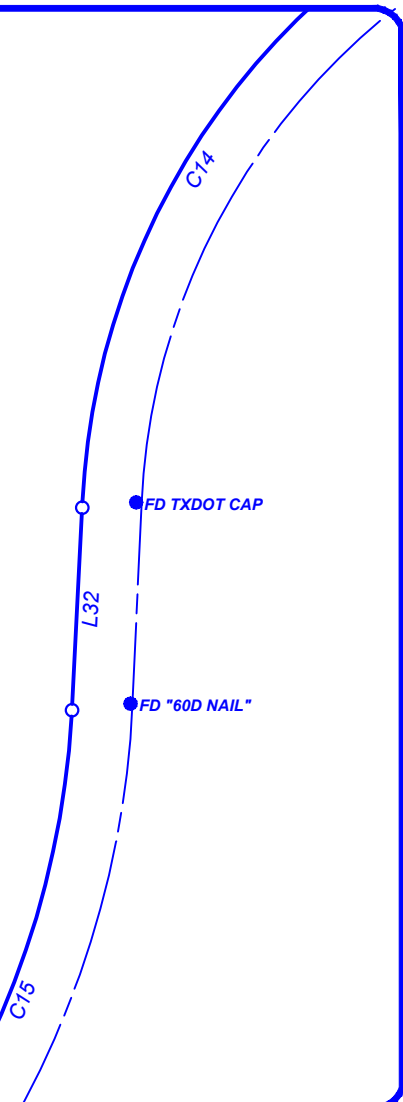


GRAND PRAIRIE  
AND  
ARLINGTON  
CITY LIMIT LINE  
TARRANT COUNTY, TEXAS

MARSHALL LANCASTER & ASSOCIATES, INC.  
CONSULTING LAND SURVEYORS  
land title surveys · topography · subdivision platting  
retail, commercial and industrial construction surveying  
1864 Norwood Drive, Suite E, Hurst, TX 76054  
metro (817) 268-8000 fax (817) 282-2231 [www.mla-survey.com](http://www.mla-survey.com) firm no.10045100

DETAIL 7

STATE HIGHWAY 360



DETAIL 8

STATE HIGHWAY 360

MONUMENT SET  
N 90°00'00"W,  
10.00' FROM CITY  
LIMIT CORNER

FD 5/8" REBAR  
WITH RPC  
STAMPED "KHA"

FD 5/8" REBAR  
WITH RPC

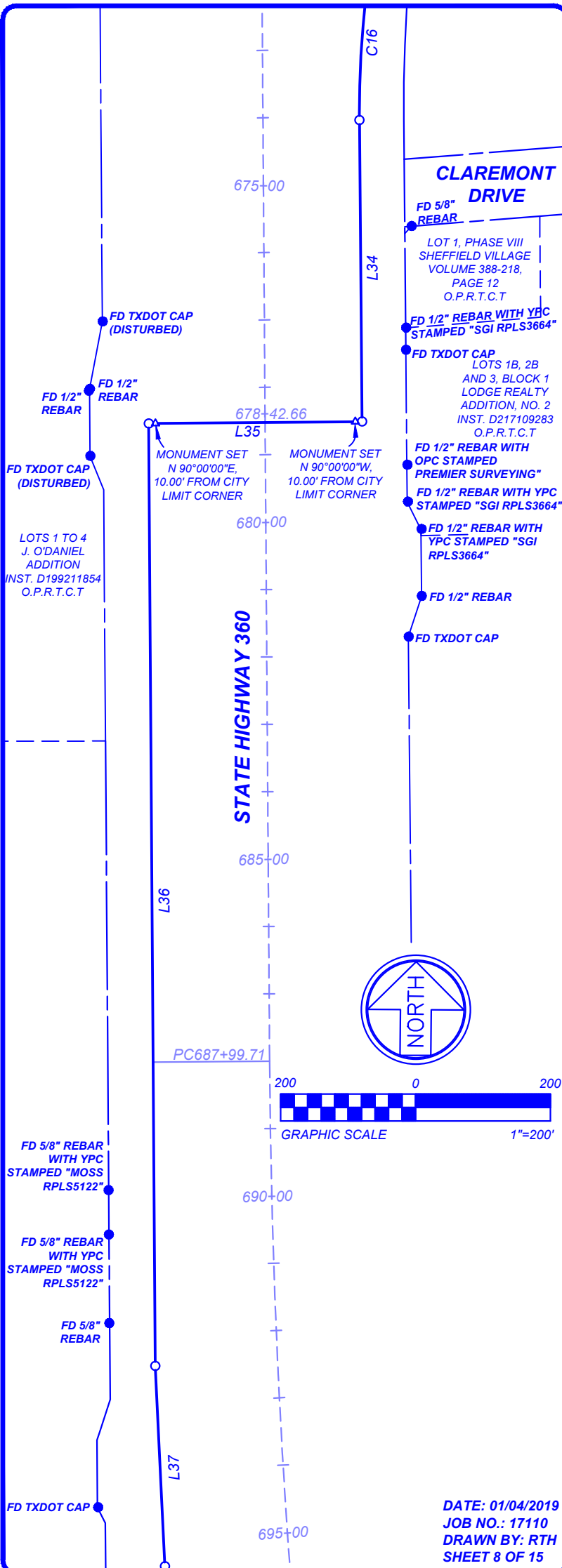
## LEGEND

- ... FOUND MONUMENT AS NOTED
- ... DIMENSION POINT,  
NOTHING SET OR FOUND
- △ ... SET 1/2" REBAR WITH ALUMINUM  
CAP STAMPED "MLA RPLS 4873"
- YPC ... YELLOW PLASTIC CAP
- RPC ... RED PLASTIC CAP
- ... STATE HIGHWAY 360 RIGHT OF WAY

GRAND PRAIRIE  
AND  
ARLINGTON  
CITY LIMIT LINE  
TARRANT COUNTY, TEXAS

DETAIL 9

STATE HIGHWAY 360



## CLAREMONT DRIVE

FD 5/8" REBAR

LOT 1, PHASE VIII  
SHEFFIELD VILLAGE  
VOLUME 388-218,  
PAGE 12  
O.P.R.T.C.T

FD 1/2" REBAR WITH YPC  
STAMPED "SGI RPLS3664"

FD TXDOT CAP

LOTS 1B, 2B  
AND 3, BLOCK 1  
LODGE REALTY  
ADDITION, NO. 2  
INST. D217109283  
O.P.R.T.C.T

FD 1/2" REBAR WITH  
OPC STAMPED  
PREMIER SURVEYING"

FD 1/2" REBAR WITH YPC  
STAMPED "SGI RPLS3664"

FD 1/2" REBAR WITH  
YPC STAMPED "SGI  
RPLS3664"

FD 1/2" REBAR

FD TXDOT CAP



DATE: 01/04/2019  
JOB NO.: 17110  
DRAWN BY: RTH  
SHEET 8 OF 15

MARSHALL LANCASTER & ASSOCIATES, INC.  
CONSULTING LAND SURVEYORS

land title surveys · topography · subdivision platting  
retail, commercial and industrial construction surveying

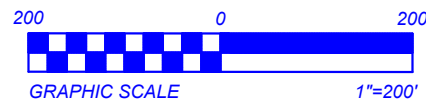
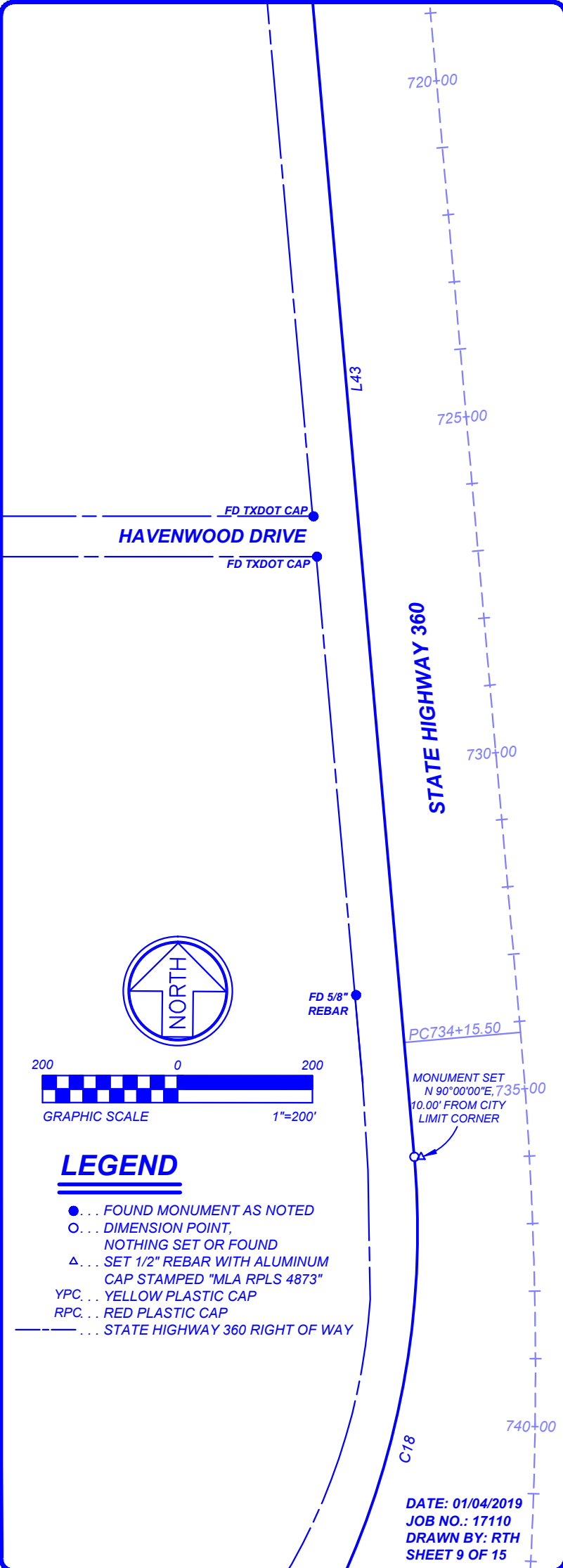
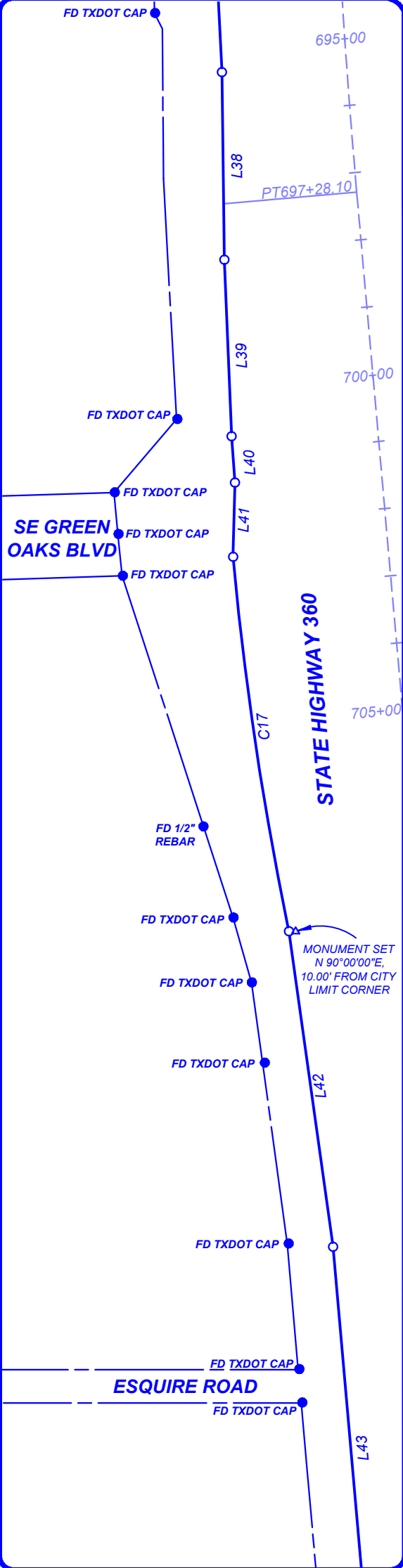
1864 Norwood Drive, Suite E, Hurst, TX 76054

metro (817) 268-8000 fax (817) 282-2231 www.mla-survey.com firm no.10045100



# DETAIL 10

# DETAIL 11



## LEGEND

- ... FOUND MONUMENT AS NOTED
- ... DIMENSION POINT, NOTHING SET OR FOUND
- △... SET 1/2" REBAR WITH ALUMINUM CAP STAMPED "MLA RPLS 4873"
- YPC... YELLOW PLASTIC CAP
- RPC... RED PLASTIC CAP
- ... STATE HIGHWAY 360 RIGHT OF WAY

DATE: 01/04/2019  
JOB NO.: 17110  
DRAWN BY: RTH  
SHEET 9 OF 15

GRAND PRAIRIE  
AND  
ARLINGTON  
CITY LIMIT LINE  
TARRANT COUNTY, TEXAS

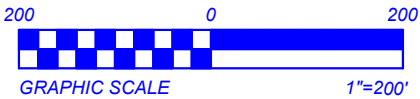
MARSHALL LANCASTER & ASSOCIATES, INC.  
CONSULTING LAND SURVEYORS  
land title surveys · topography · subdivision platting  
retail, commercial and industrial construction surveying  
1864 Norwood Drive, Suite E, Hurst, TX 76054  
metro (817) 268-8000 fax (817) 282-2231 www.mla-survey.com firm no.10045100

DETAIL 12

DETAIL 13

**LEGEND**

- ... FOUND MONUMENT AS NOTED
- ... DIMENSION POINT,  
NOTHING SET OR FOUND
- △... SET 1/2" REBAR WITH ALUMINUM  
CAP STAMPED "MLA RPLS 4873"
- YPC... YELLOW PLASTIC CAP
- RPC... RED PLASTIC CAP
- ... STATE HIGHWAY 360 RIGHT OF WAY



EAST SUBLETT  
ROAD

STATE HIGHWAY 360

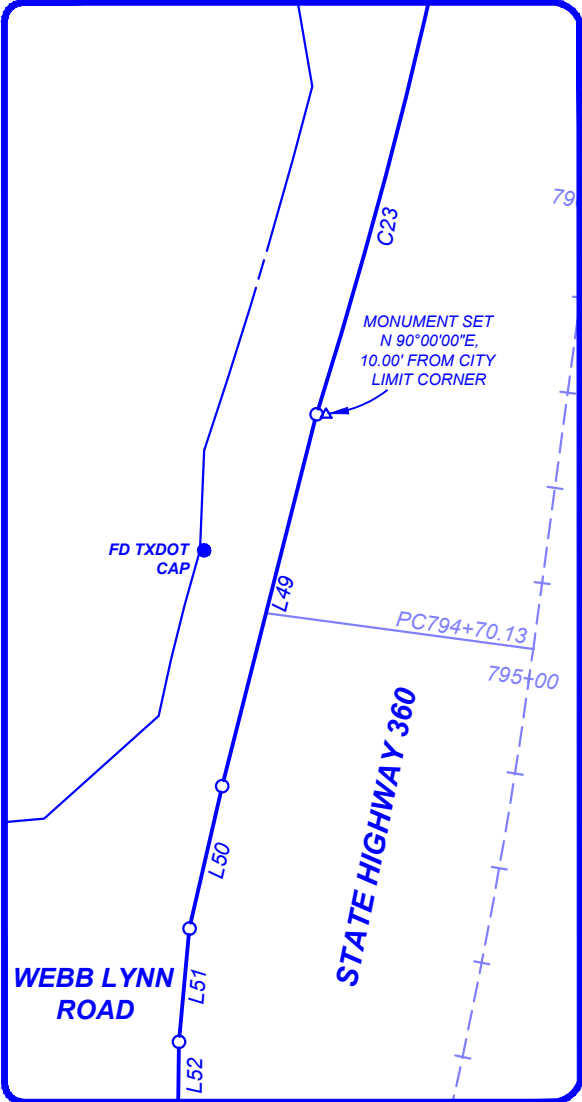
STATE HIGHWAY 360

DATE: 01/04/2019  
JOB NO.: 17110  
DRAWN BY: RTH  
SHEET 10 OF 15

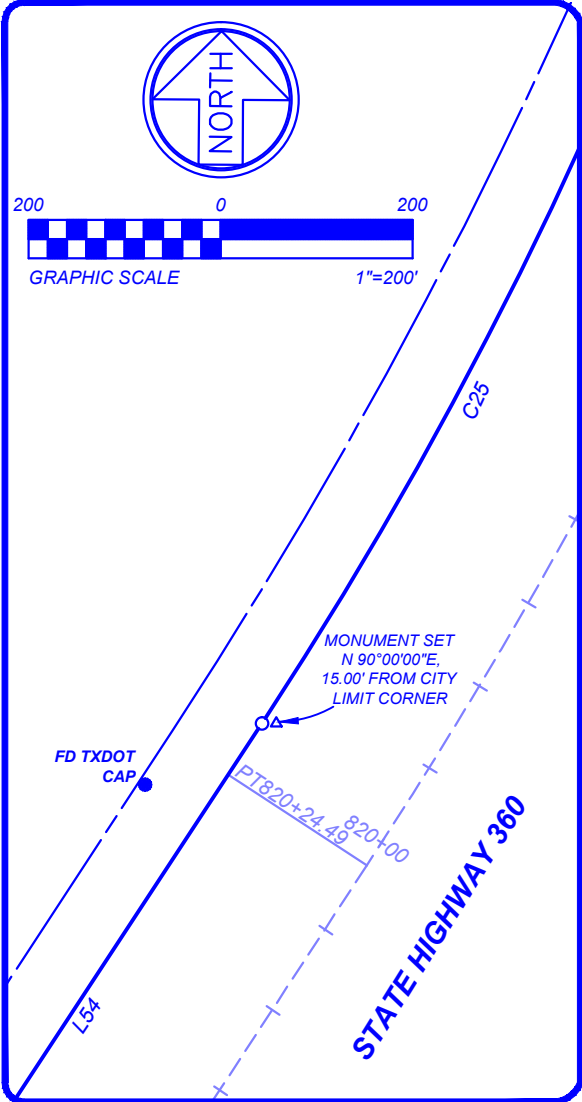
GRAND PRAIRIE  
AND  
ARLINGTON  
CITY LIMIT LINE  
TARRANT COUNTY, TEXAS

MARSHALL LANCASTER & ASSOCIATES, INC.  
CONSULTING LAND SURVEYORS  
land title surveys · topography · subdivision platting  
retail, commercial and industrial construction surveying  
1864 Norwood Drive, Suite E, Hurst, TX 76054  
metro (817) 268-8000 fax (817) 282-2231 [www.mla-survey.com](http://www.mla-survey.com) firm no.10045100

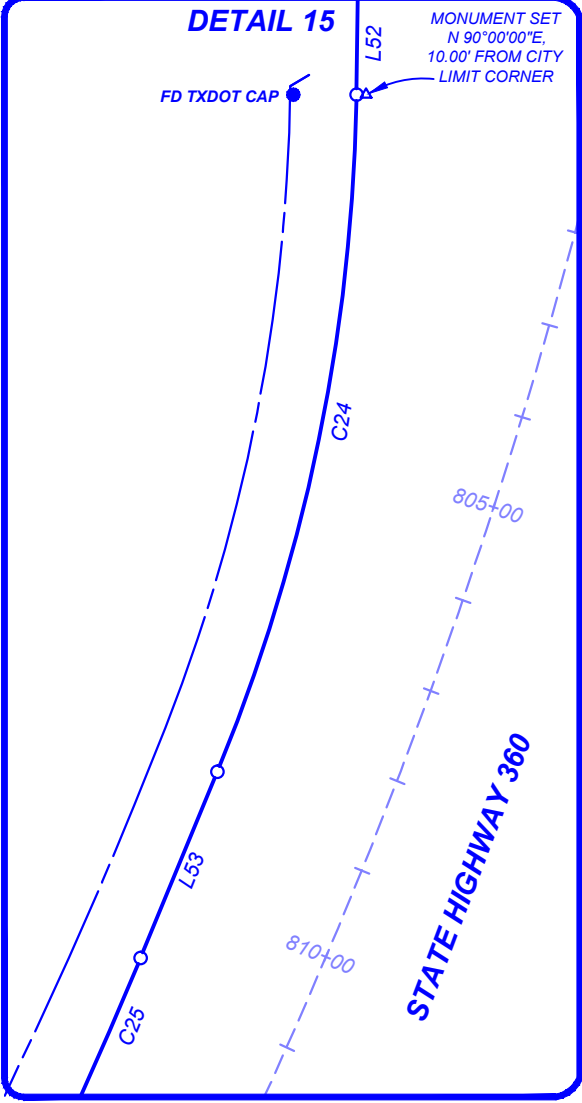
DETAIL 14



DETAIL 16



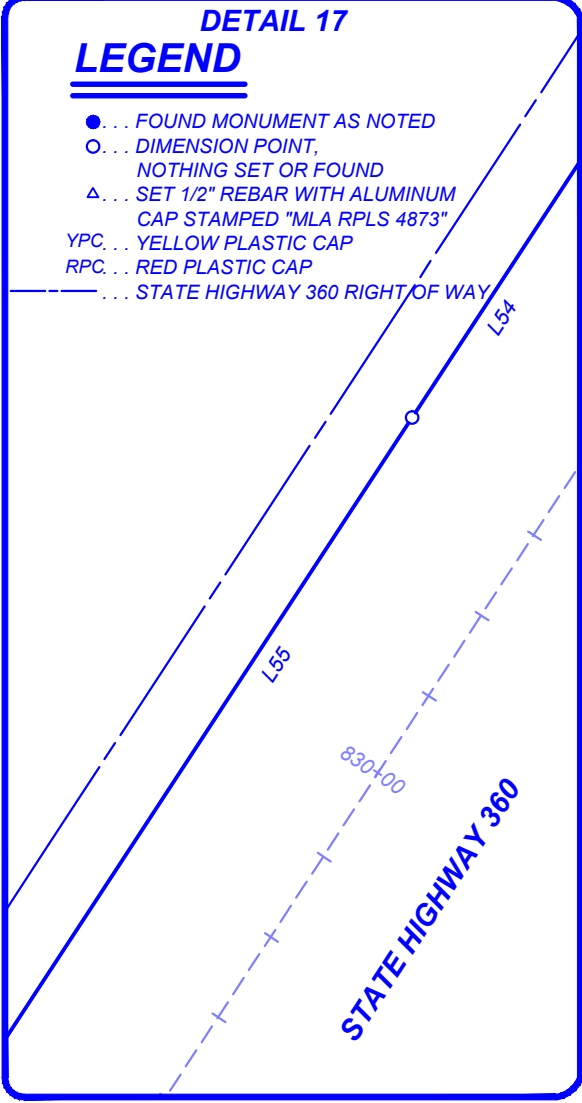
DETAIL 15



DETAIL 17

**LEGEND**

- ... FOUND MONUMENT AS NOTED
- ... DIMENSION POINT, NOTHING SET OR FOUND
- △ ... SET 1/2" REBAR WITH ALUMINUM CAP STAMPED "MLA RPLS 4873"
- YPC ... YELLOW PLASTIC CAP
- RPC ... RED PLASTIC CAP
- ... STATE HIGHWAY 360 RIGHT OF WAY

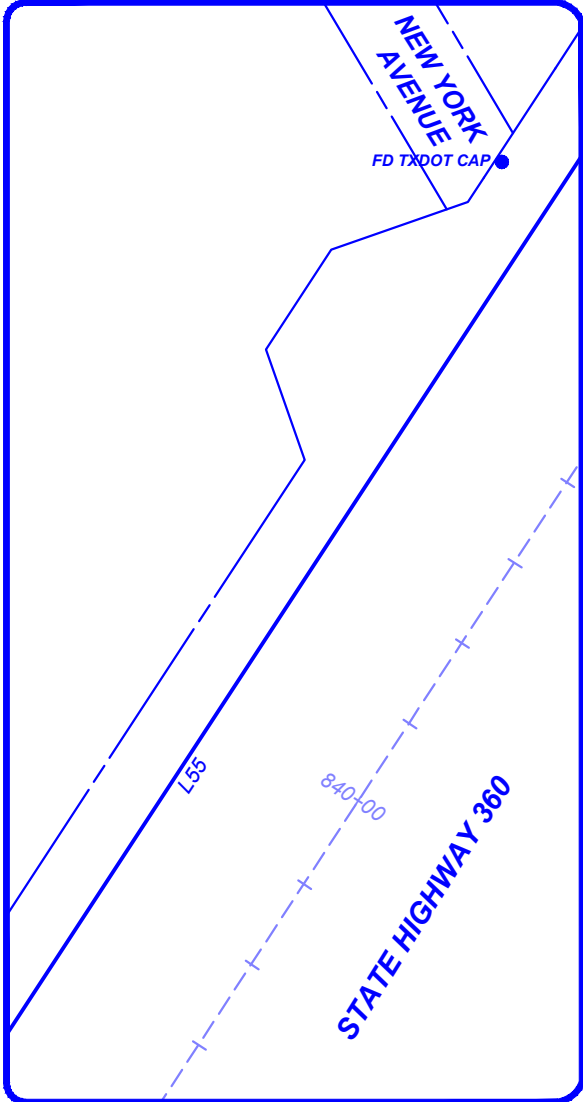


DATE: 01/04/2019  
JOB NO.: 17110  
DRAWN BY: RTH  
SHEET 11 OF 15

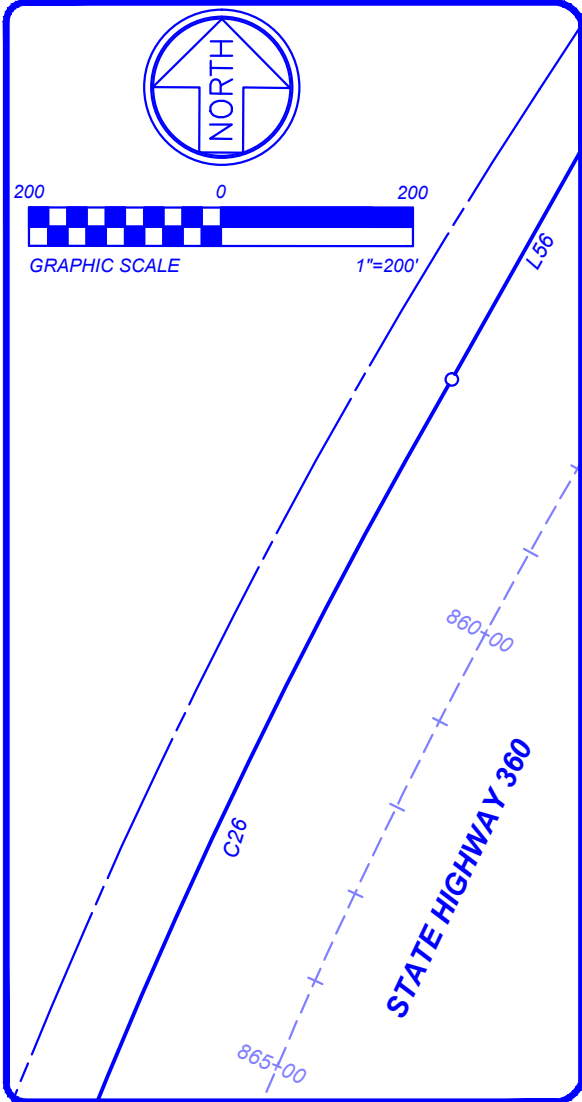
GRAND PRAIRIE  
AND  
ARLINGTON  
CITY LIMIT LINE  
TARRANT COUNTY, TEXAS

MARSHALL LANCASTER & ASSOCIATES, INC.  
CONSULTING LAND SURVEYORS  
land title surveys · topography · subdivision platting  
retail, commercial and industrial construction surveying  
1864 Norwood Drive, Suite E, Hurst, TX 76054  
metro (817) 268-8000 fax (817) 282-2231 [www.mla-survey.com](http://www.mla-survey.com) firm no.10045100

DETAIL 18



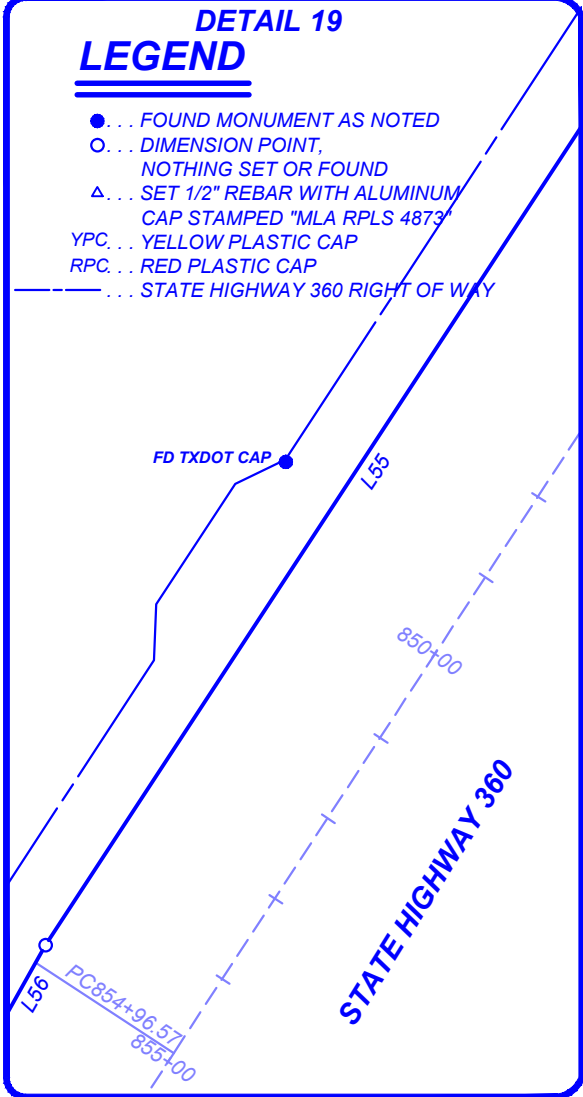
DETAIL 20



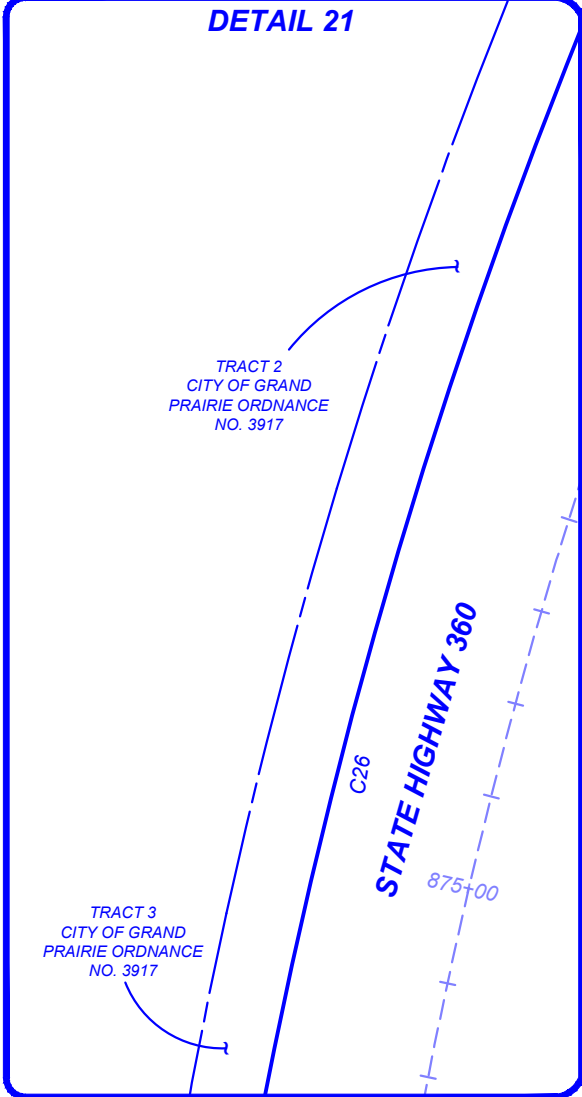
DETAIL 19

**LEGEND**

- ... FOUND MONUMENT AS NOTED
- ... DIMENSION POINT,  
NOTHING SET OR FOUND
- △ ... SET 1/2" REBAR WITH ALUMINUM  
CAP STAMPED "MLA RPLS 4873"
- YPC ... YELLOW PLASTIC CAP
- RPC ... RED PLASTIC CAP
- ... STATE HIGHWAY 360 RIGHT OF WAY



DETAIL 21



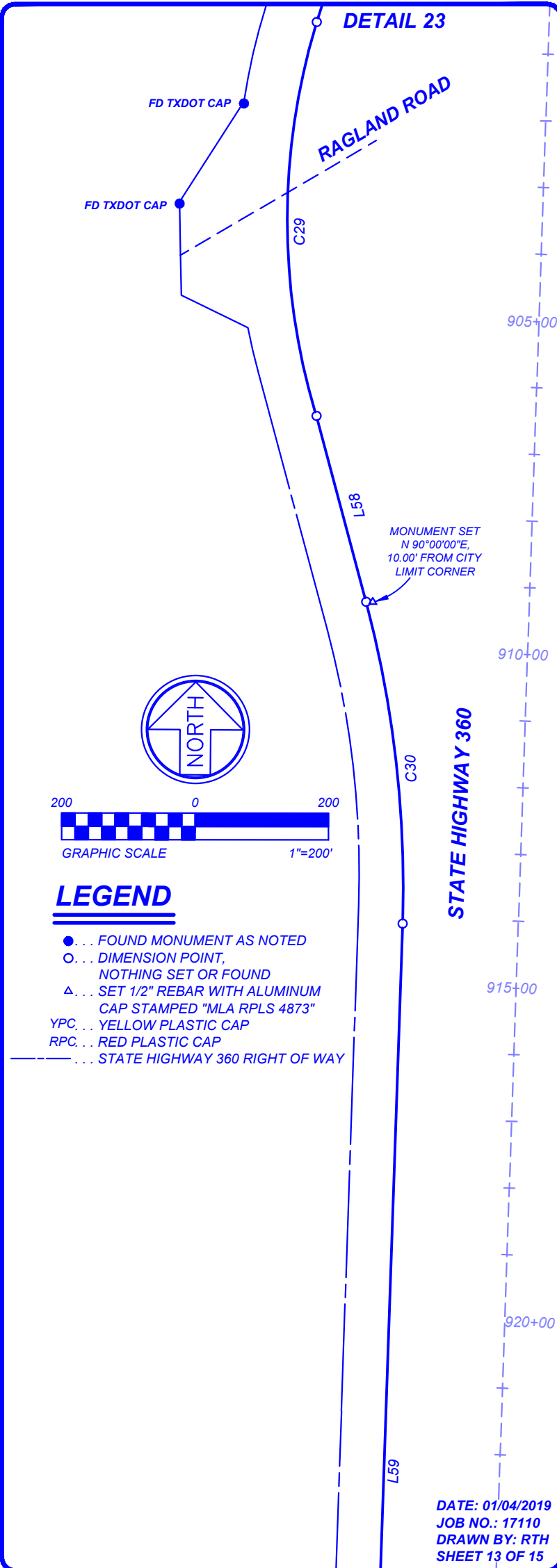
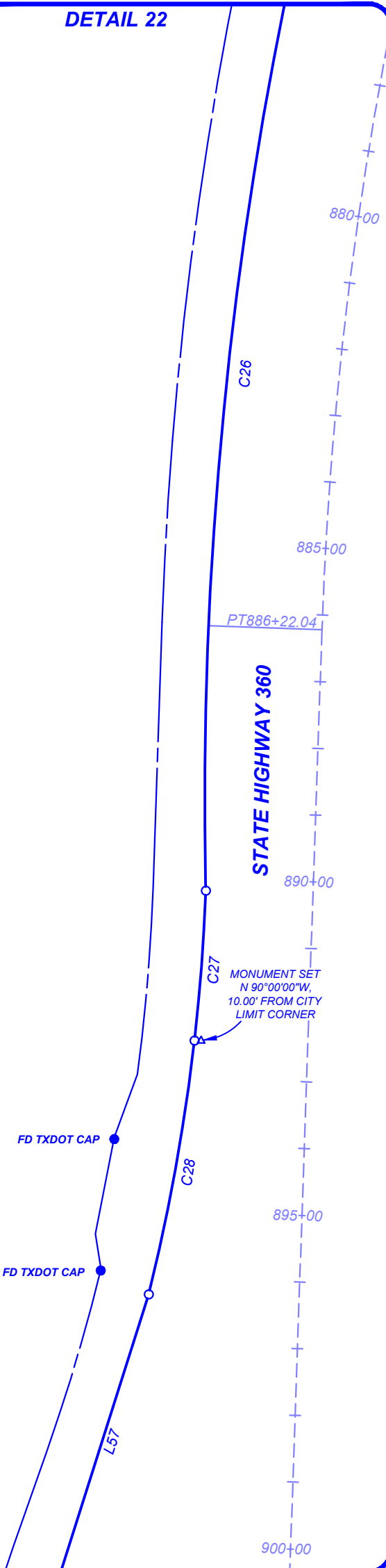
DATE: 01/04/2019  
JOB NO.: 17110  
DRAWN BY: RTH  
SHEET 12 OF 15

GRAND PRAIRIE  
AND  
ARLINGTON  
CITY LIMIT LINE  
TARRANT COUNTY, TEXAS

MARSHALL LANCASTER & ASSOCIATES, INC.  
CONSULTING LAND SURVEYORS  
land title surveys · topography · subdivision platting  
retail, commercial and industrial construction surveying  
1864 Norwood Drive, Suite E, Hurst, TX 76054  
metro (817) 268-8000 fax (817) 282-2231 www.mla-survey.com firm no.10045100

DETAIL 22

DETAIL 23



**LEGEND**

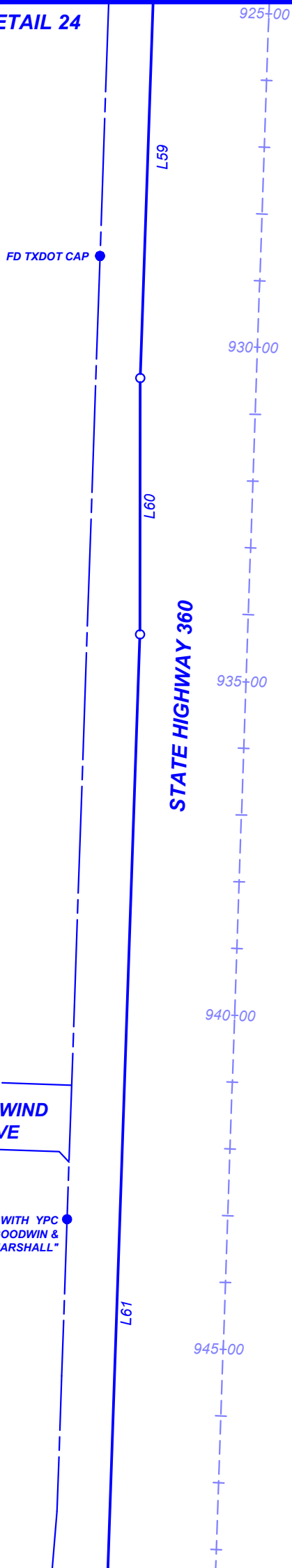
- ... FOUND MONUMENT AS NOTED
- ... DIMENSION POINT,  
NOTHING SET OR FOUND
- △ ... SET 1/2" REBAR WITH ALUMINUM  
CAP STAMPED "MLA RPLS 4873"
- YPC ... YELLOW PLASTIC CAP
- RPC ... RED PLASTIC CAP
- ... STATE HIGHWAY 360 RIGHT OF WAY

DATE: 01/04/2019  
JOB NO.: 17110  
DRAWN BY: RTH  
SHEET 13 OF 15

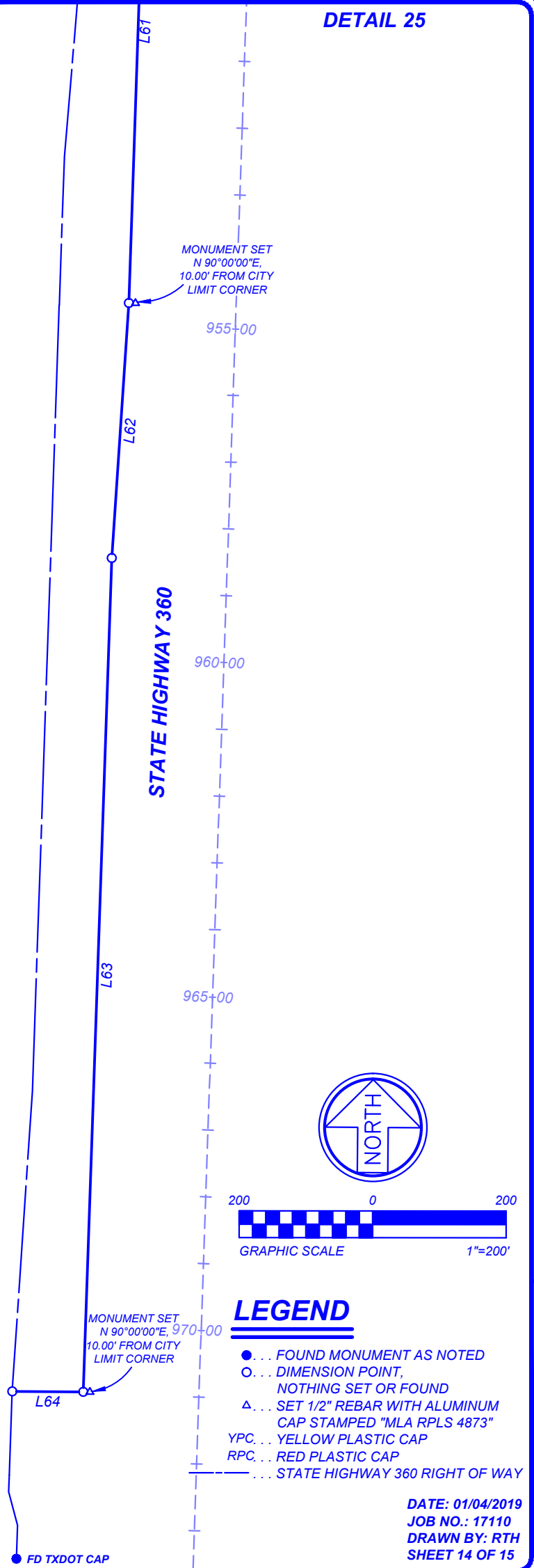
GRAND PRAIRIE  
AND  
ARLINGTON  
CITY LIMIT LINE  
TARRANT COUNTY, TEXAS

MARSHALL LANCASTER & ASSOCIATES, INC.  
CONSULTING LAND SURVEYORS  
land title surveys · topography · subdivision platting  
retail, commercial and industrial construction surveying  
1864 Norwood Drive, Suite E, Hurst, TX 76054  
metro (817) 268-8000 fax (817) 282-2231 [www.mla-survey.com](http://www.mla-survey.com) firm no.10045100

### DETAIL 24



### DETAIL 25



**GRAND PRAIRIE  
AND  
ARLINGTON  
CITY LIMIT LINE  
TARRANT COUNTY, TEXAS**

**MARSHALL LANCASTER & ASSOCIATES, INC.**  
**CONSULTING LAND SURVEYORS**

land title surveys · topography · subdivision platting  
retail, commercial and industrial construction surveying  
1864 Norwood Drive, Suite E, Hurst, TX 76054

metro (817) 268-8000 fax (817) 282-2231 [www.mla-survey.com](http://www.mla-survey.com) firm no.10045100



### CURVE TABLE

COURSE	BEARING	DISTANCE
C2	R= 675.73' TAN= 118.77' CB= S 12°11'40" W	L= 235.14' CA= 19°56'16" CL= 233.96'
C3	R= 878.23' TAN= 65.94' CB= S 18°49'43" W	L= 131.64' CA= 8°35'17" CL= 131.51'
C4	R= 2077.93' TAN= 332.18' CB= S 07°14'54" W	L= 658.78' CA= 18°09'54" CL= 656.03'
C5	R= 6193.00' TAN= 234.36' CB= S 03°27'07" E	L= 468.49' CA= 4°20'04" CL= 468.38'
C6	R= 9425.00' TAN= 317.15' CB= S 03°47'01" E	L= 634.06' CA= 3°51'16" CL= 633.94'
C7	R= 500.00' TAN= 31.59' CB= S 05°06'14" W	L= 63.10' CA= 7°13'51" CL= 63.06'
C8	R= 2250.00' TAN= 215.61' CB= S 04°53'32" W	L= 429.91' CA= 10°56'52" CL= 429.26'
C9	R= 1470.00' TAN= 276.67' CB= S 11°14'10" E	L= 546.94' CA= 21°19'05" L= 543.79'
C10	R= 1300.00' TAN= 240.88' CB= S 11°23'51" E	L= 476.35' CA= 20°59'41" CL= 473.69'
C11	R= 753.00' TAN= 585.41' CB= S 38°45'48" E	L= 995.21' CA= 75°43'33" CL= 924.34'
C12	R= 5975.00' TAN= 346.00' CB= S 79°49'25" E	L= 691.23' CA= 6°37'42" CL= 690.84'
C13	R= 2910.00' TAN= 446.49' CB= S 76°26'47" W	L= 886.07' CA= 17°26'46" CL= 882.65'
C14	R= 757.00' TAN= 480.20' CB= S 34°36'37" W	L= 855.85' CA= 64°46'38" CL= 810.99'
C15	R= 923.00' TAN= 320.30' CB= S 22°04'26" W	L= 616.59' CA= 38°16'31" CL= 605.19'
C16	R= 1492.00' TAN= 568.45' CB= S 20°21'17" W	L= 1086.24' CA= 41°42'50" CL= 1062.41'

### CURVE TABLE

COURSE	BEARING	DISTANCE
C17	R= 5000.00' TAN= 281.09' CB= S 08°28'25" E	L= 561.58' CA= 6°26'07" CL= 561.29'
C18	R= 1250.00' TAN= 371.12' CB= S 11°30'14" W	L= 721.51' CA= 33°04'18" CL= 711.54'
C19	R= 900.00' TAN= 252.30' CB= S 22°12'41" W	L= 491.98' CA= 31°19'13" CL= 485.88'
C20	R= 1151.04' TAN= 46.73' CB= S 06°51'27" E	L= 93.40' CA= 4°38'58" CL= 93.38'
C21	R= 2900.00' TAN= 260.94' CB= S 06°50'19" E	L= 520.48' CA= 10°17'00" CL= 519.78'
C22	R= 11696.18' TAN= 792.19' CB= S 05°24'17" W	L= 1581.96' CA= 7°44'58" CL= 1580.76'
C23	R= 5788.00' TAN= 513.51' CB= S 12°22'33" W	L= 1024.34' CA= 10°08'24" CL= 1023.00'
C24	R= 1925.00' TAN= 366.53' CB= S 11°37'12" W	L= 724.39' CA= 21°33'39" CB= 720.13'
C25	R= 4500.00' TAN= 427.80' CB= S 27°49'51" W	L= 853.03' CA= 10°51'40" CL= 851.76'
C26	R= 6040.00' TAN= 1697.57' CB= S 14°26'14" W	L= 3309.75' CA= 31°23'47" CL= 3268.50'
C27	R= 2740.00' TAN= 112.71' CB= S 04°19'41" W	L= 225.30' CA= 4°42'40" CL= 225.24'
C28	R= 2963.18' TAN= 193.55' CB= S 10°13'29" W	L= 386.56' CA= 7°28'28" CL= 386.29'
C29	R= 1015.00' TAN= 308.47' CB= S 00°03'35" W	L= 598.93' CA= 33°48'32" CL= 590.27'
C30	R= 1650.00' TAN= 245.26' CB= S 06°29'26" E	L= 486.95' CA= 16°54'33" CL= 485.18'
C31	R= 729.17' TAN= 92.49' CB= N 16°07'09" E	L= 183.99' CA= 14°27'26" CL= 183.50'

### LINE TABLE

COURSE	BEARING	DISTANCE
L18	S 22°01'16" W	296.25'
L19	S 01°17'55" E	2313.64'
L20	S 05°42'39" E	294.43'
L21	S 02°19'09" E	132.99'
L22	S 01°08'31" E	86.19'
L23	S 01°22'18" E	103.27'
L24	S 01°16'52" E	74.78'
L25	S 00°21'40" E	289.37'
L26	S 08°43'10" W	29.76'
L27	S 00°34'37" E	1731.91'
L28	S 21°53'42" E	205.55'
L29	S 00°54'01" E	217.10'
L30	S 76°37'34" E	536.26'
L31	S 00°00'00" W	340.87'
L32	S 02°56'11" W	211.22'
L33	S 41°12'41" W	160.66'
L34	S 00°30'08" E	447.53'
L35	S 89°29'52" W	316.43'
L36	S 00°24'07" E	1398.46'
L37	S 02°43'37" E	297.78'
L38	S 00°44'22" E	277.89'
L39	S 02°21'07" E	261.95'
L40	S 04°10'20" E	68.72'
L41	S 01°28'46" W	109.99'
L42	S 07°57'14" E	472.00'

### LINE TABLE

COURSE	BEARING	DISTANCE
L43	S 05°01'55" E	2303.41'
L44	S 37°52'17" W	185.59'
L45	S 06°33'04" W	162.89'
L46	S 11°58'49" E	274.86'
L47	S 00°22'21" E	417.93'
L48	S 09°22'20" W	259.55'
L49	S 14°14'51" W	399.31'
L50	S 12°59'25" W	152.15'
L51	S 05°10'54" W	118.68'
L52	S 00°50'22" W	164.20'
L53	S 22°24'01" W	209.71'
L54	S 33°15'41" W	710.67'
L55	S 33°13'09" W	2804.53'
L56	S 29°25'57" W	322.49'
L57	S 17°34'38" W	454.17'
L58	S 14°56'43" E	288.44'
L59	S 01°57'50" W	1642.12'
L60	S 00°05'16" W	383.77'
L61	S 01°57'15" W	2032.11'
L62	S 03°50'25" W	382.41'
L63	S 01°57'46" W	1248.54'
L64	N 89°32'53" W	106.51'
L66	N 46°55'09" E	133.79'
L65	S 88°36'09" W	153.87'

DATE: 01/04/2019  
JOB NO.: 17110  
DRAWN BY: RTH  
SHEET 15 OF 15

GRAND PRAIRIE  
AND  
ARLINGTON  
CITY LIMIT LINE  
TARRANT COUNTY, TEXAS

MARSHALL LANCASTER & ASSOCIATES, INC.  
CONSULTING LAND SURVEYORS  
land title surveys · topography · subdivision platting  
retail, commercial and industrial construction surveying  
1864 Norwood Drive, Suite E, Hurst, TX 76054  
metro (817) 268-8000 fax (817) 282-2231 [www.mla-survey.com](http://www.mla-survey.com) firm no.10045100