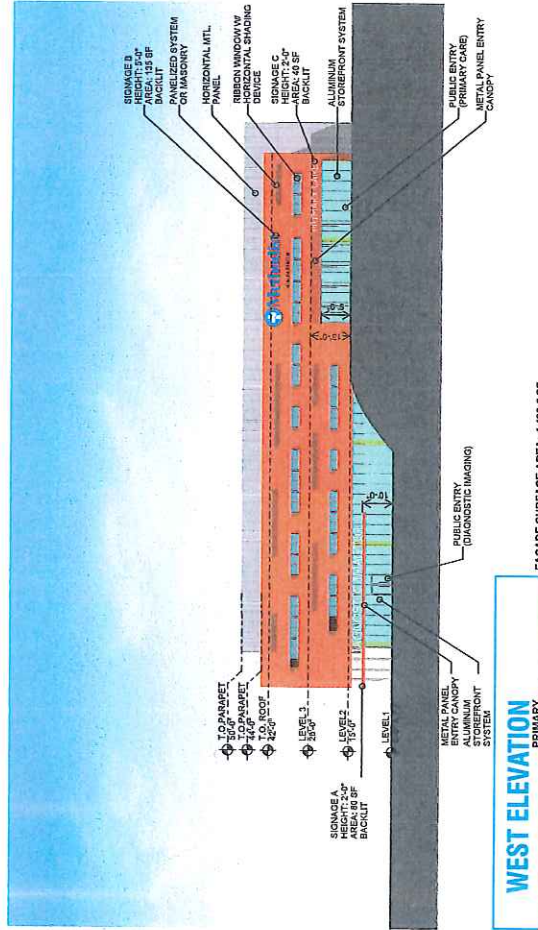


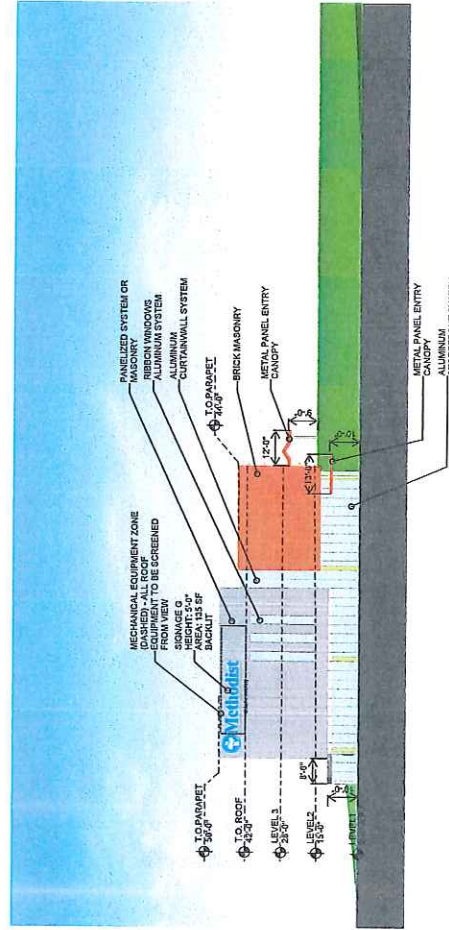
SOUTH ELEVATION PRIMARY

FACADE SURFACE AREA: 6,707.2 SF



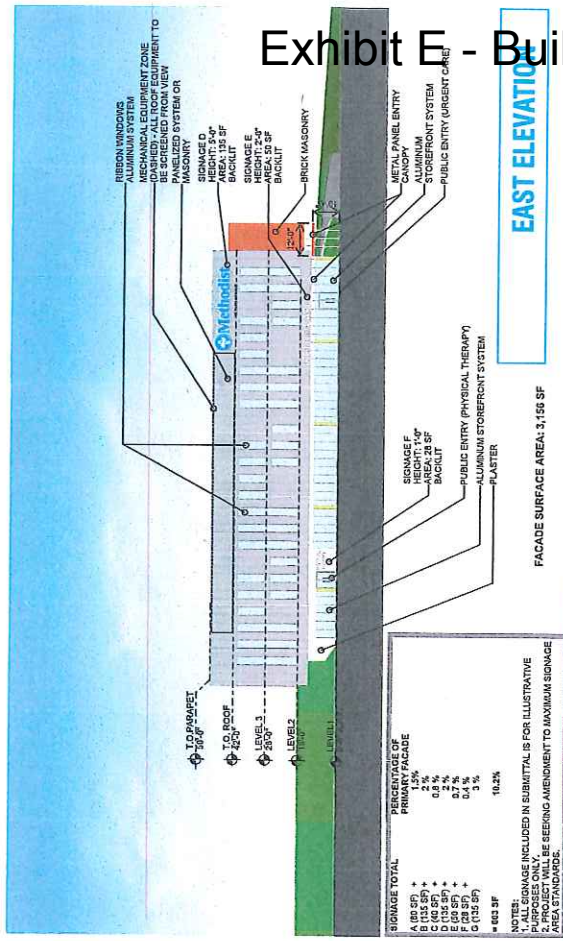
WEST ELEVATION PRIMARY

FACADE SURFACE AREA: 4,400.5 SF



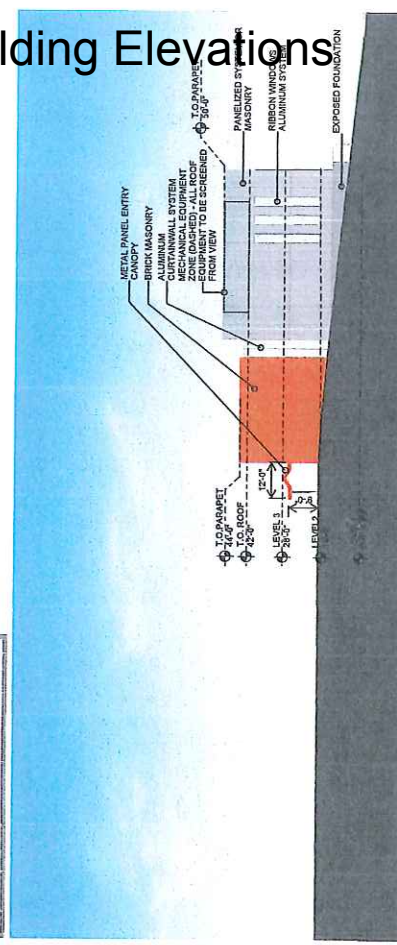
NORTH ELEVATION PRIMARY

FACADE SURFACE AREA: 7,410 SF



EAST ELEVATION

FACADE SURFACE AREA: 3,156 SF



Planning Dep:
AUG 24

Receive



METHODIST CONVENIENT CARE CAMPUS GRAND PRAIRIE | EXTERIOR ELEVATIONS

