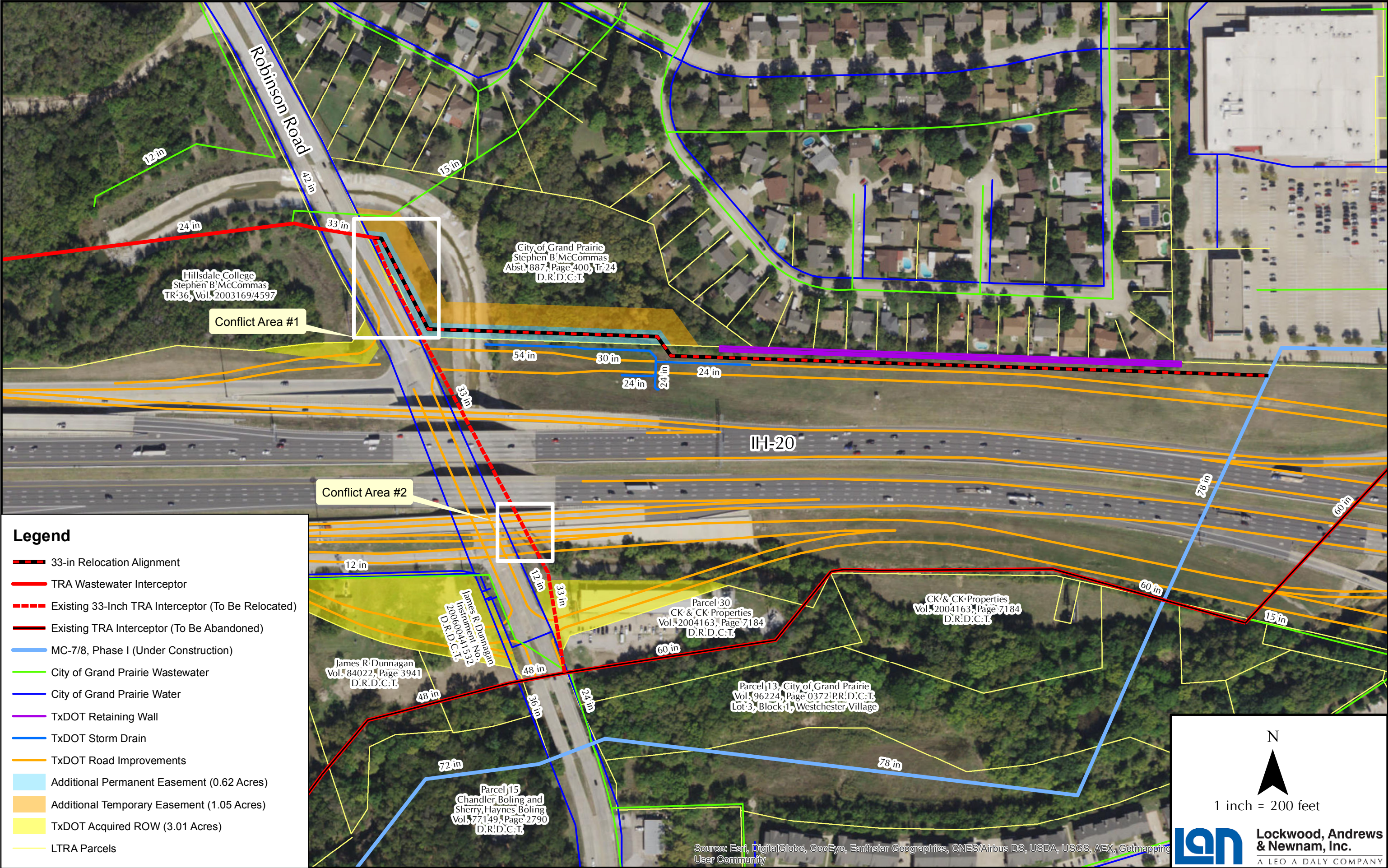


# 33" TRA Interceptor Relocation at Robinson Road



Lockwood, Andrews & Newnam Inc. makes no representations or warranties regarding accuracy or completeness of the information depicted on this map or the data from which it was produced. This map is NOT suitable for survey purposes and does not purport to depict or establish boundaries between land owners or locations of utility infrastructure where survey data is available and field locations have been established.