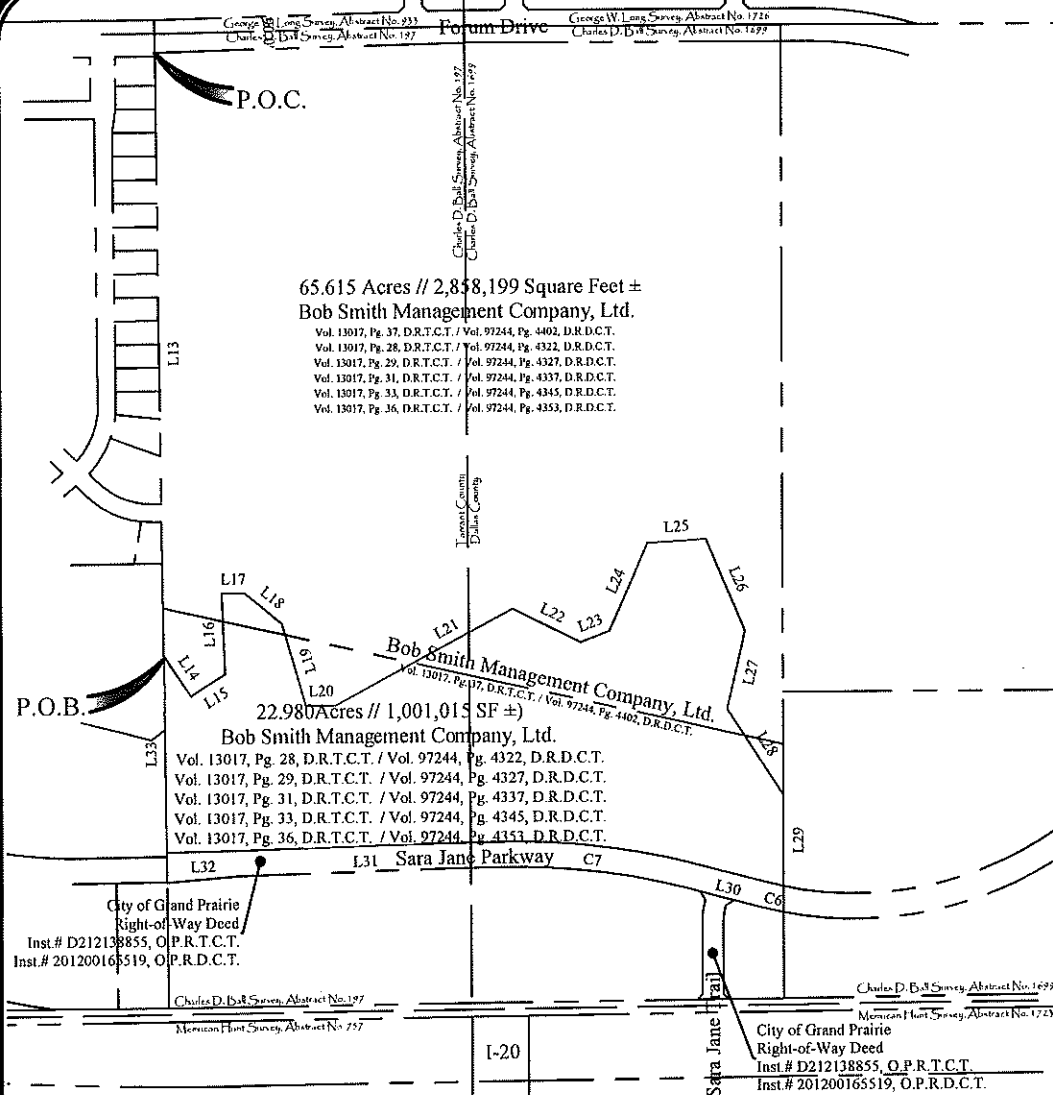
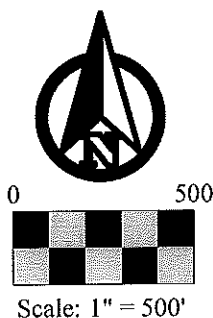


# Exhibit A - Location Map

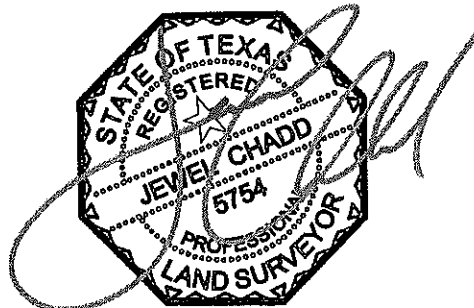


Line Data Table		
Line #	Bearing	Distance
L13	S00°41'14"E	1663.18'
L14	S33°47'59"E	135.41'
L15	N58°20'36"E	113.17'
L16	N02°28'24"W	224.38'
L17	S89°42'53"E	64.12'
L18	S50°20'48"E	133.65'
L19	S16°18'26"E	236.12'
L20	N89°24'46"E	86.06'
L21	N61°54'12"E	559.11'
L22	S63°20'08"E	207.48'
L23	N69°43'50"E	87.11'
L24	N23°36'25"E	264.58'
L25	N86°22'53"E	165.97'
L26	S23°05'00"E	275.82'
L27	S13°09'19"W	221.06'
L28	S33°09'22"E	283.76'
L29	S00°00'03"E	252.50'
L30	N75°32'28"W	218.09'
L31	S88°22'30"W	703.56'
L32	S88°56'40"W	201.33'
L33	N00°41'14"W	542.64'

Bearings based on right of way of Sara Jane Parkway.



Curve Data Table					
Curve #	Arc	Radius	Delta	Chord Bearing	Chord
C6	39.28'	965.00'	002°19'57"	N76°42'26"W	39.28'
C7	571.26'	2035.00'	016°05'02"	N83°34'59"W	569.39'



JPH Job No.  
 2014.009.012 Sara Jane Parkway - Zoning Exhibit  
 Winding Creek Apts.dwg  
 © 2015 JPH Land Surveying, Inc. - All Rights Reserved  
 807 Bluebonnet Drive, Suite C Keller, Texas 76248  
 Telephone (817) 431-4971 www.jphlandsurveying.com  
 TBPLS Firm #10019500 #10194073 #10193867  
 DFW | Austin | Abilene

**ZONING EXHIBIT**  
**22.980 Acres**  
 Charles D. Ball Survey, Abst. No. 197 (Tarrant County)  
 Charles D. Ball Survey, Abst. No. 1699 (Dallas County)  
 City of Grand Prairie, Tarrant County & Dallas County, Texas  
 October 26, 2015  
 Zoning Change - Case Number \_\_\_\_\_