

OWNER:
COSMOS FOUNDATION
636 HARMONY PUBLIC SCHOOLS
7393 W. SAM HOUSTON PKWY SOUTH, SUITE 100
HOUSTON, TEXAS 77059
CONTACT: EROL KOSE (832-831-9175)

ARCHITECT:
HEIGHTS VENTURE ARCHITECTURE/DESIGN
11111 NORTH LOOP WEST, SUITE 800
HOUSTON, TEXAS 77058
CONTACT: LINDA LEGNETTI (281-454-4107)

CIVIL ENGINEER:
PAPE-DAWSON ENGINEERS
6500 WEST FWY, SUITE 700
FORT WORTH, TEXAS 76116
CONTACT: CHRIS ROGERS (817-470-3668)

LANDSCAPE TABULATIONS

SITE LANDSCAPE AREA: 15% of the site to be landscape area for MF-1 zoning

Site area = 231,088sf
Required = 34,663sf Provided = 61,637sf

STREET REQUIREMENTS: (1) tree 3" cal. per 50 lf of street

Street length = 1,027 lf (on nw 7th street and Saddle Trail)
Required = 6 trees Provided = 6 trees

PARKING REQUIREMENTS: (1) tree 3" cal. per 20 parking spaces

Parking spaces = 127 ea
Required = 7 trees Provided = 7 trees

SITE REQUIREMENTS: (1) tree 3" cal. per 500 sf of Required Landscape Area

Landscape Area = 34,663sf/500
Existing Tree Credit = 19
Required = 70 trees - 19 = 51 Provided = 45 trees

EXISTING TREE CREDITS				
TREE #	SPECIES	CAL. INCHES	TREE CREDIT	
1	OAK	15"	5	
2	PECAN	10"	3	
3	OAK	12"	3	
4	OAK	8"	2	
5	OAK	10"	3	
6	OAK	10"	3	
TOTAL:			19	

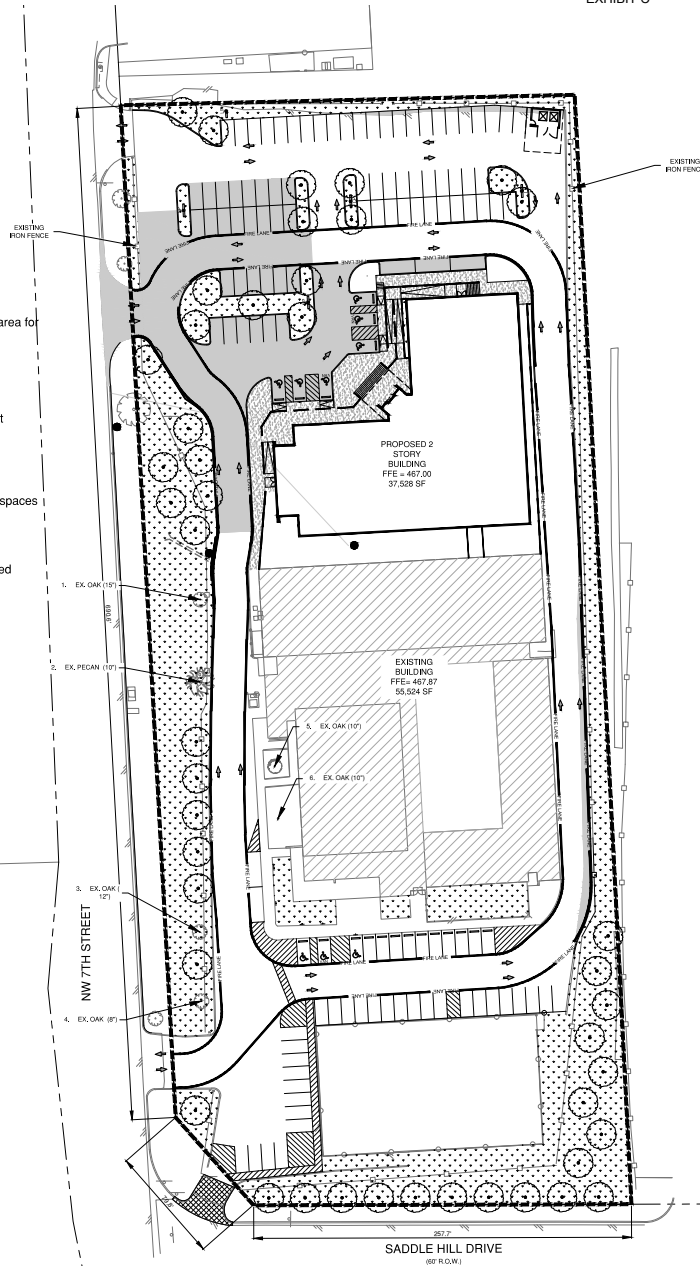
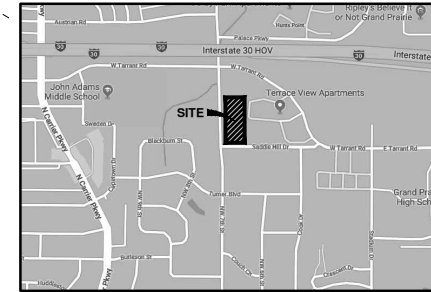
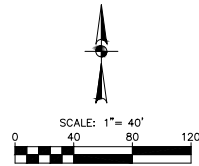


EXHIBIT C



LOCATION MAP



LEGEND

- EXIST. TREE
- NEW TREE
- NEW PAVING
- LANDSCAPE AREA
- NEW LOT LIGHTING

SITE DEVELOPMENT TABLE

LAND USE	SCHOOL (LEARNING INSTITUTION K-5 & 6-8)
ZONING	MF-1
LOT	TO BE PLATTED
EXISTING BLDG AREA	55,524 SF
PROPOSED BLDG AREA	37,528 SF
TOTAL BLDG AREA	93,052 SF
TOTAL LOT AREA	231,088 SF/ 5.30 AC
LOT COVERAGE	40%
BUILDING HEIGHT	40' HT. ARTICULATED PUBLIC ENTRANCE

PARKING TABLE	REQUIRED	PROVIDED
K-5 CLASSES: 17 @ 2.5 PARKS PER CLASS	43	64
6-8 CLASSES: 9 @ 3.5 PARKS PER CLASS	32	63
TOTAL	75	127

PARKING COUNT	EXISTING	PROPOSED
REGULAR STALLS	162	118
ADA STALLS	7	0
TOTAL:	169	127

CASE NUMBER:
S180901/P180901

HARMONY
PUBLIC SCHOOLS

1ST SUBMITTAL 7-24-2018
PRE DRC STAFF COMMENTS 8-20-2018

PAPE-DAWSON
ENGINEERS

FORT WORTH | SAN ANTONIO | AUSTIN | HOUSTON | DALLAS
6500 WEST FWY, STE 700 | FORT WORTH, TX 76116 | 817.470.3668
TEXAS BOARD OF PROFESSIONAL ENGINEERING (www.heightsventure.com)

HEIGHTS VENTURE
ARCHITECTURE + DESIGN

HOUSTON | DALLAS
1111 North Loop West, Suite 800 | 5717 Legacy Drive, Suite 200
Houston, Texas 77058 | Plano, Texas 75024
713.889.1103 V | 972.490.7202 V

THIS DOCUMENT IS
RELEASED FOR
"REVIEW PURPOSES"
UNDER THE
AUTHORIZATION OF
M. CHRISTOPHER ROGERS,
P.E. #95819
SEPTEMBER 4, 2018.
IT IS NOT FOR
CONSTRUCTION OR
PERMIT PURPOSES.

HARMONY
SCHOOL OF
SCIENCE
GRAND PRAIRIE

1102 NW 7TH STREET
GRAND PRAIRIE, TEXAS 75050

Project Number: 18090

Date Plotted: 9/4/2018

Drawn By: Checked By:

File Name: 180903 SITE PLAN FOR PLANNER (24036.dwg)

LANDSCAPE
PLAN
EXHIBIT

© COPYRIGHT 2018 HEIGHTS VENTURE