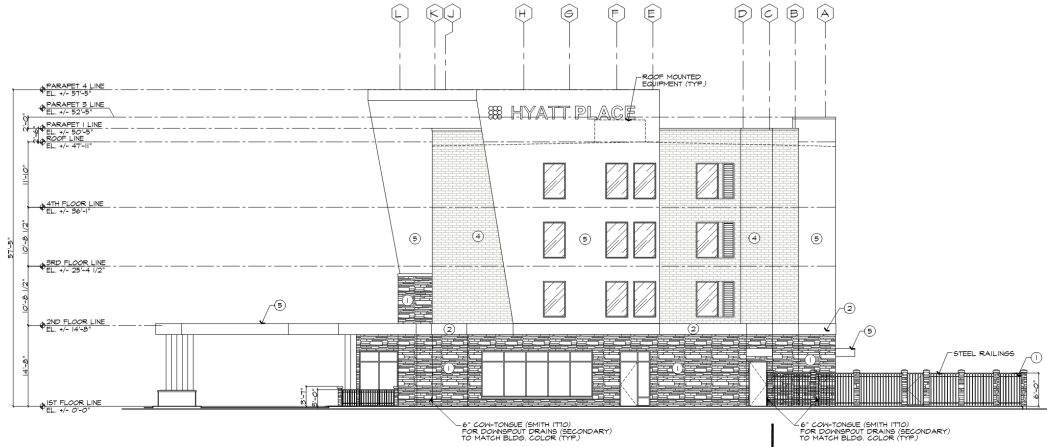


- ARCHITECTURAL ELEMENTS:
- * ARTICULATION ELEMENT
 - * TRANSOM WINDOW / LARGE WINDOWS
 - * TALLER DOOR DIMENSIONS
 - * CHANGES IN MATERIALS
 - * TOWER ELEMENT
 - * OVERHAND EAVES
 - * BANDING
 - * FILASTERS
 - * CANOPY VARIATION
 - * CORNER PLAZA W/ PLANTINGS & SEATING
 - * WINDOW FENESTRATION PATTERNS



NOTE:

- * ALL STUCCO INSTALLATIONS TO COMPLY WITH ASTM C1088
- * MAXIMUM HALL PANEL AREA = 144 sq. ft.
- * MAXIMUM DISTANCE BETWEEN JOINTS = 10 ft.
- * MINIMUM LENGTH TO WIDTH RATIO = 2:3 TO 1
- * NO INCREASE ALLOWED UNLESS APPROVED BY ARCHITECT.



02 NORTH ELEVATION (RIGHT)
SCALE: 3/32"=1'-0"



NOTE:

- * SIGNAGE IS FOR ILLUSTRATIVE PURPOSES ONLY.

NOTE:

- * ALL STUCCO INSTALLATIONS TO COMPLY WITH ASTM C1088
- * MAXIMUM HALL PANEL AREA = 144 sq. ft.
- * MAXIMUM DISTANCE BETWEEN JOINTS = 10 ft.
- * MINIMUM LENGTH TO WIDTH RATIO = 2:3 TO 1
- * NO INCREASE ALLOWED UNLESS APPROVED BY ARCHITECT.

FINISH LEGEND:

1	COUNTRY LEDGESTONE - RED ROCK (BY BOKAL)
2	CALISTONE - WHITE FLOOR (BY SHENYI WILLIAMS-102)
3	SPANDREL GLAZING
4	SORBELTO - GREY 2" X 4" BRICKS & PAVERS
5	STUCCO - COTTON WHITE (BY SHENYI WILLIAMS-104)

TABLE BE 1: BUILDING MATERIALS

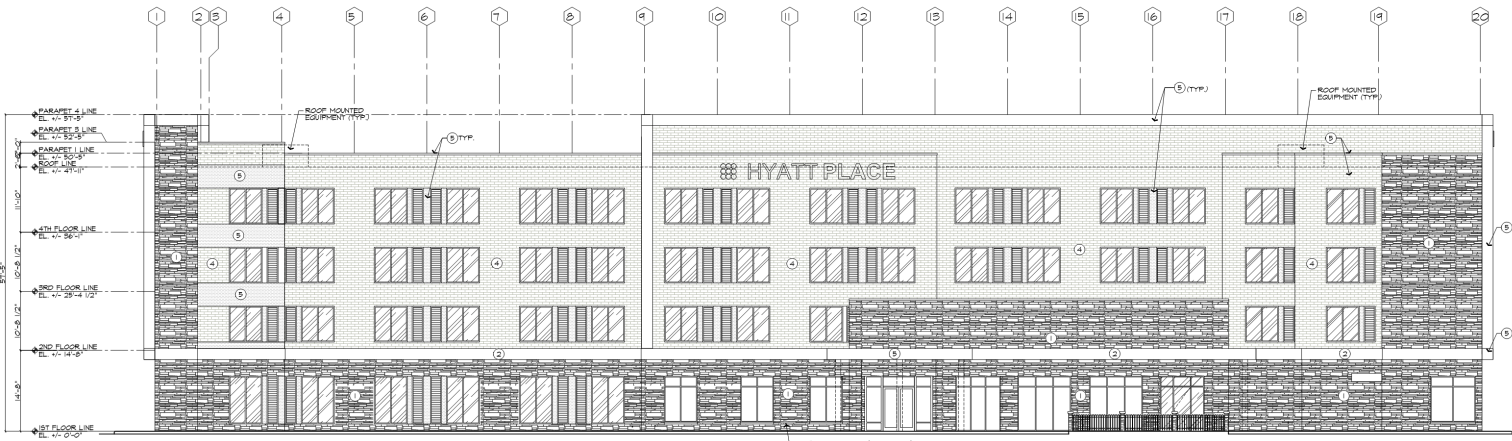
FACADE	TOTAL AREA (SQ. FT.)	AREA OF OPENINGS (SQ. FT.)	RESULTANT AREA (SQ. FT.)	STONE (SQ. FT.)	BRICK (SQ. FT.)	STUCCO (SQ. FT.)	ACCENT/ TRIM (SQ. FT.)
NORTH	4,554 SQ. FT. (100%)	652 SQ. FT. (14%)	3,902 SQ. FT. (86%)	1,028 SQ. FT. (26%)	1,246 SQ. FT. (32%)	1,401 SQ. FT. (36%)	147 SQ. FT. (4%)
SOUTH	4,444 SQ. FT. (100%)	99 SQ. FT. (2%)	4,345 SQ. FT. (98%)	4,321 SQ. FT. (99%)	2,214 SQ. FT. (51%)	164 SQ. FT. (4%)	164 SQ. FT. (4%)
EAST	5,471 SQ. FT. (100%)	5,341 SQ. FT. (98%)	1,000 SQ. FT. (18%)	9,450 SQ. FT. (100%)	4,809 SQ. FT. (51%)	1,524 SQ. FT. (16%)	521 SQ. FT. (6%)
WEST	15,214 SQ. FT. (100%)	5,341 SQ. FT. (35%)	10,118 SQ. FT. (65%)	3,744 SQ. FT. (37%)	4,440 SQ. FT. (44%)	512 SQ. FT. (5%)	1,817 SQ. FT. (18%)

TABLE BE 2: WINDOWS FOR STREET-FACING FACADE

DIRECTION	AREA	STANDARD	REQUIRED	PROVIDED	MEETS
NORTH	4,554 SQ. FT.	50% OF AREA	1,366 SQ. FT.	652 SQ. FT.	NO
SOUTH	4,444 SQ. FT.	50% OF AREA	1,548 SQ. FT.	99 SQ. FT.	NO
EAST	5,471 SQ. FT.	50% OF AREA	4,045 SQ. FT.	5,341 SQ. FT.	NO
WEST	15,214 SQ. FT.	50% OF AREA	4,054 SQ. FT.	5,341 SQ. FT.	NO

TABLE BE 3: WINDOWS FOR BUILDING

AMOUNT OF WINDOWS FOR BUILDING	AREA OF ALL FACADES OR LENGTH OF ALL FACADES	REQUIRED	PROVIDED	MEETS
50% OF AREA OF ALL FACADES	56,054 SQ. FT.	16,021 SQ. FT.	1,215 SQ. FT.	NO
50% OF LENGTH OF ALL FACADES	646 FT.	325 FT.	282 FT.	NO



01 EAST ELEVATION (FRONT)
SCALE: 3/32"=1'-0"

EXTERIOR ELEVATION

HYATT PLACE
2,600 ACRES
CHARLES D. BALL SURVEY ABSTRACT NO. 191
CITY OF GRAND PRAIRIE, TARRANT COUNTY, TEXAS
CASE NUMBER: SU190703/S190703

PROJECT STATUS: FINAL
PROJECT MANAGER: DGR
DESIGN MANAGER: ROM
PROJECT DATE: 01/05/16
REVISION DATE: 06/25/19

INFINITE HOSPITALITY AND DEVELOPMENT LLC
4075 EAST BELMAP ST.
FORTH WORTH TEXAS 76117
PH: 817-491-4519

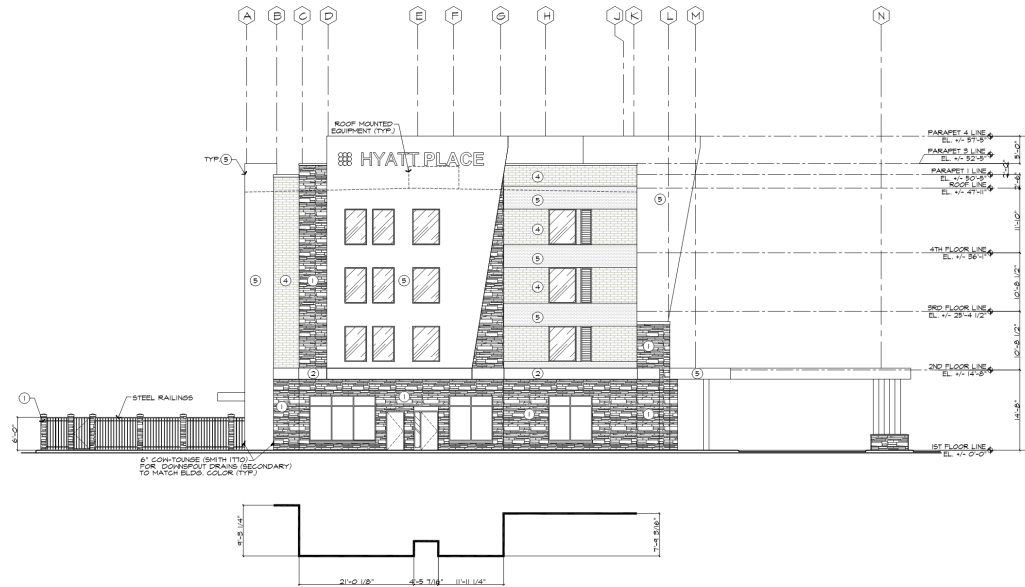
HYATT PLACE
2460 W. INTERSTATE 20
GRAND PRAIRIE, TEXAS

ADR-DESIGNS-LLC
TOTAL DESIGN MANAGERS
601 SADDLE HILL DRIVE GRAND PRAIRIE, TX 75050
E-Mail: ardrdesigns@gmail.com

JOB NUMBER: IHM - 16437

SHEET NUMBER
A310

- ARCHITECTURAL ELEMENTS:**
- * PROJECTING FACADE
 - * TRANSOM WINDOW / LARGE WINDOWS
 - * TALLER DOOR DIMENSIONS
 - * CHANGES IN MATERIALS
 - * TOWER ELEMENT
 - * OVERHANG EAVES
 - * BANDING
 - * PLASTER
 - * CANOPY VARIATION
 - * CORNER PLAZA W/ PLANTINGS & SEATING
 - * WINDOW PENETRATION PATTERNS



02 SOUTH ELEVATION (LEFT)
SCALE: 3/32"=1'-0"



01 WEST ELEVATION (REAR)
SCALE: 3/32"=1'-0"

NOTE:

- * ALL STUCCO INSTALLATIONS TO CORRELATE WITH ADH GUIDES
- * MAXIMUM HALL PANEL AREA = 144 SQ. FT.
- * MAXIMUM DISTANCE BETWEEN JOINTS = 8' 0" FT.
- * MINIMUM LENGTH TO WIDTH RATIO = 2.5 TO 1
- * NO INCREASE ALLOWED UNLESS APPROVED BY ARCHITECT.

FINISH LEGEND:

	COUNTRY LESTONESTONE RED ROCK BY BORNAL
	CAST STONE, WHITE FLOOR (SHENYI WILLIAMS-1022)
	SPANDREL GLAZING
	SORBETO 2" x 8" PINK BRICKS & PAVERS
	STUCCO, COTTON WHITE (SHENYI WILLIAMS-1024)

TABLE BE 1: BUILDING MATERIALS

FACADE	TOTAL AREA (SQ. FT.)	AREA OF OPENINGS (SQ. FT.)	RESULTANT AREA (SQ. FT.)	STONE	BRICK	STUCCO	AGGENT/ TRIM
NORTH	4,195 SQ. FT. (100%)	671 SQ. FT. (16%)	3,524 SQ. FT. (84%)	1,029 SQ. FT. (29%)	1,296 SQ. FT. (37%)	1,005 SQ. FT. (28%)	191 SQ. FT. (5%)
SOUTH	4,444 SQ. FT. (100%)	641 SQ. FT. (14%)	3,803 SQ. FT. (86%)	884 SQ. FT. (23%)	3,711 SQ. FT. (97%)	2,065 SQ. FT. (56%)	644 SQ. FT. (17%)
EAST	18,411 SQ. FT. (100%)	5,847 SQ. FT. (32%)	12,564 SQ. FT. (68%)	5,450 SQ. FT. (43%)	4,309 SQ. FT. (34%)	1,524 SQ. FT. (12%)	323 SQ. FT. (3%)
WEST	19,524 SQ. FT. (100%)	5,481 SQ. FT. (28%)	14,043 SQ. FT. (72%)	5,748 SQ. FT. (41%)	4,472 SQ. FT. (32%)	3,122 SQ. FT. (22%)	1,511 SQ. FT. (11%)

TABLE BE 2: WINDOWS FOR STREET-FACING FACADE

DIRECTION	AREA	STANDARD	REQUIRED	PROVIDED	MEETS
NORTH	4,195 SQ. FT.	30% OF AREA	1,259 SQ. FT.	671 SQ. FT.	NO
SOUTH	4,444 SQ. FT.	30% OF AREA	1,333 SQ. FT.	641 SQ. FT.	NO
EAST	18,411 SQ. FT.	30% OF AREA	5,523 SQ. FT.	5,847 SQ. FT.	NO
WEST	19,524 SQ. FT.	30% OF AREA	5,857 SQ. FT.	5,481 SQ. FT.	NO

TABLE BE 3: WINDOWS FOR BUILDING

AMOUNT OF WINDOWS FOR BUILDING	AREA OF ALL FACADES OR LENGTH OF ALL FACADES	REQUIRED	PROVIDED	MEETS
50% OF AREA OF ALL FACADE	55,649 SQ. FT.	17,494 SQ. FT.	1,415 SQ. FT.	NO
50% OF LENGTH OF ALL FACADE	646 FT.	323 FT.	525 FT.	NO

PROJECT STATUS:
FINAL

PROJECT MANAGER:
DSR

DESIGN MANAGER:
RCM

PROJECT DATE:
01/05/16

REVISION DATE:
07/24/19

INFINITE HOSPITALITY AND DEVELOPMENT LLC
4075 EAST BELMAP ST.
FORTH WORTH TEXAS 76117
PH: 817-407-4019

HYATT PLACE
2480 W. INTERSTATE 20
GRAND PRAIRIE, TEXAS

ADR-DESIGNS-LLC
TOTAL DESIGN MANAGERS
601 SADDLE HILL DRIVE, GRAND PRAIRIE, TX 75060
PH: 972-262-1333 FAX: 214-272-2887
Email: aadrdesignsllc@adrdesignsllc.com
FOR: JOHN C. SARGENT

JOB NUMBER:
IHM - 16437

SHEET NUMBER
A311

EXTERIOR ELEVATION
HYATT PLACE
2.600 ACRES
CHARLES D. BALL SURVEY ABSTRACT NO. 197
CITY OF GRAND PRAIRIE,
TARRANT COUNTY, TEXAS
CASE NUMBER: SU190703/S190703

