

LYNN CREEK  
GRAND PRAIRIE, TEXAS  
TBD

**AGS**  
A.G. Spanos Companies  
Contact: Josh Spanos 972.500.9447 office  
14800 Lindmark Blvd, Suite 240  
Dallas, TX 75244

No.	Description	Date
-----	-------------	------

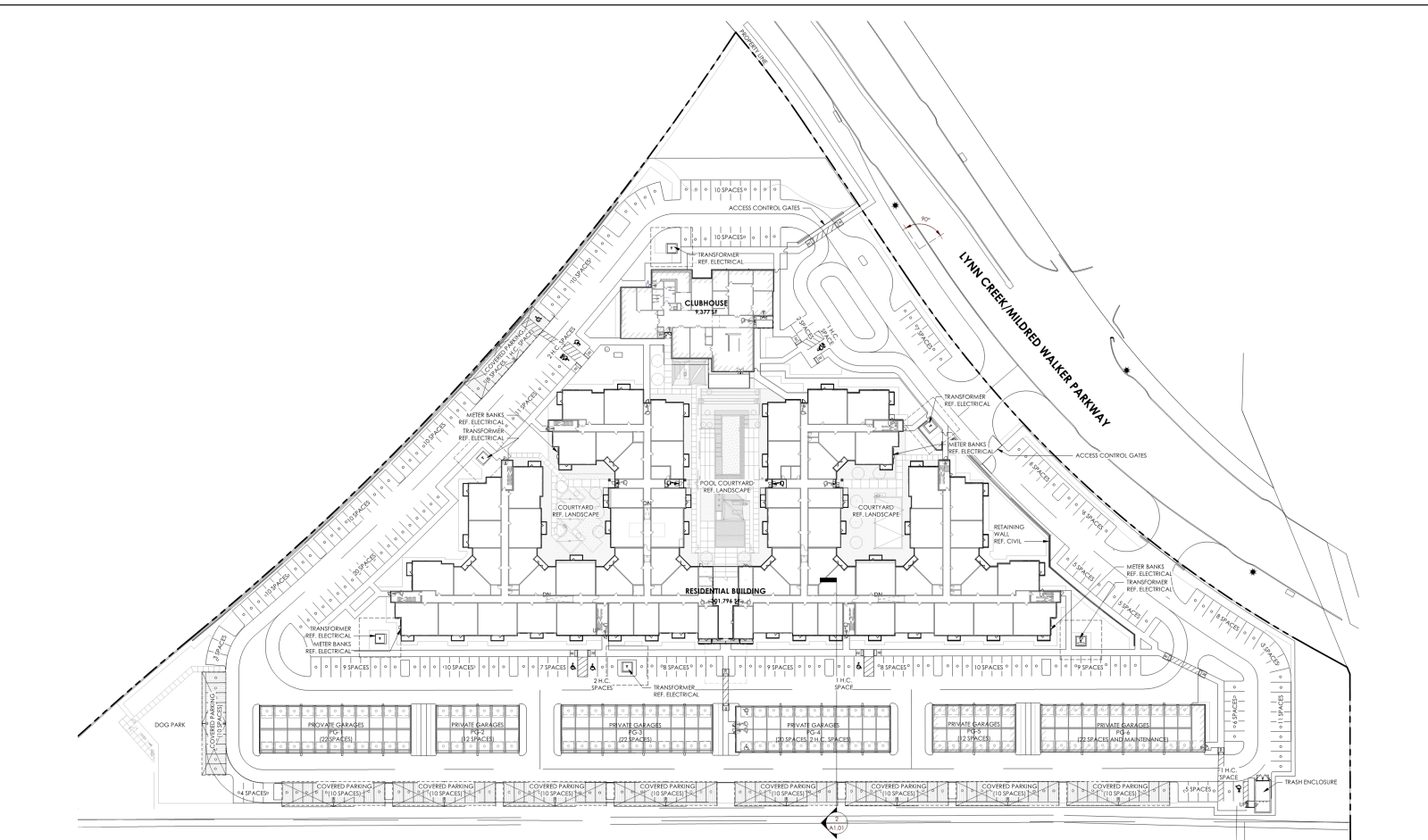
"Not for  
regulatory  
approval,  
permitting,  
or construction"  
06.21.2019

WDG Architecture Project No:  
© 2019 0000-18036

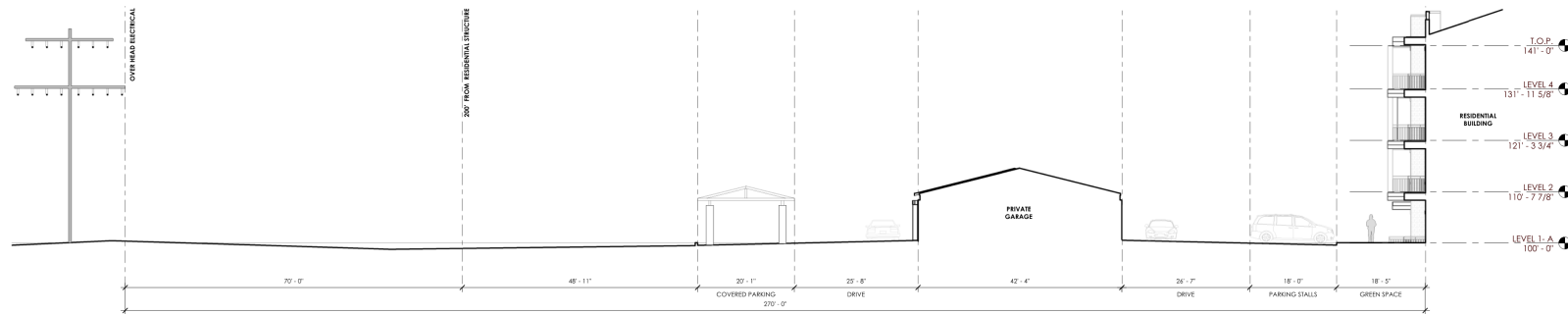
SITE PLAN

A1.01

CASE NUMBER: 1190801



1 SITE PLAN  
SCALE: 1" = 40'-0"



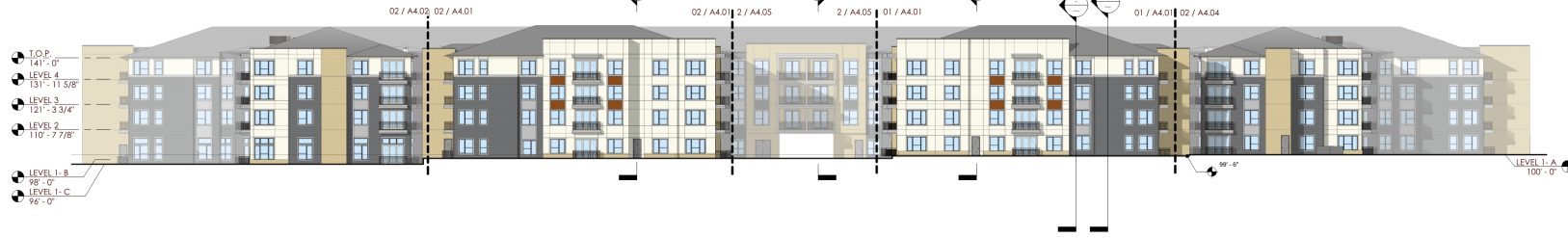
2 SITE SECTION  
SCALE: 1" = 10'-0"



Exhibit C - Building Elevations  
Page 2 of 12



WDG Architecture Dallas, PLLC  
2001 Bryan Street  
Suite 3100  
Dallas, TX 75201  
Tel. 214.949.8311



1 OVERALL ELEVATION - NORTH  
SCALE: 1" = 20'-0"



2 OVERALL ELEVATION - EAST  
SCALE: 1" = 20'-0"



3 OVERALL ELEVATION - SOUTH  
SCALE: 1" = 20'-0"



4 OVERALL ELEVATION - WEST  
SCALE: 1" = 20'-0"

EXTERIOR MATERIAL LEGEND

Material Key	Material Description
PC-01	FIBER CEMENT LAP SIDING
PC-02	FIBER CEMENT TRIM
PC-03	FIBER CEMENT SIDING (UPPER)
PC-04	CLEAR TRANSPARENT GLASS
MA-01	MANUFACTURED STONE VENEER
MA-02	KING BRICK VENEER
MA-03	SOLDER BRICK
ML-01	METAL BALCONY RAIL
PL-01	PAINT
ST-01	STUCCO SYSTEM - SANDWICH FINISH
VL-01	VENT WINDOW FRAMES

OVERALL NORTH ELEVATION		
MATERIAL NAME	SQUARE FEET	%
STUCCO	6942 SF	33 %
LAP SIDING	6779 SF	33%
BRICK	5640 SF	27%
FIBER CEMENT	1461 SF	7%

OVERALL EAST ELEVATION		
MATERIAL NAME	SQUARE FEET	%
STUCCO	3399 SF	47 %
LAP SIDING	1747 SF	23%
BRICK	1877 SF	23%
FIBER CEMENT	389 SF	5%

OVERALL SOUTH ELEVATION		
MATERIAL NAME	SQUARE FEET	%
STUCCO	11656 SF	59%
LAP SIDING	3191 SF	16%
BRICK	2405 SF	12%
FIBER CEMENT	2623 SF	13%

OVERALL WEST ELEVATION		
MATERIAL NAME	SQUARE FEET	%
STUCCO	3112 SF	40%
LAP SIDING	2033 SF	26%
BRICK	1761 SF	24%
FIBER CEMENT	444 SF	6%



LYNN CREEK  
GRAND PRAIRIE, TEXAS

TBD

A. G. Spanos Companies  
Contact: Josh Boster 972.550.9447 office  
14800 Lindstrom Blvd, Suite 240  
Dallas, TX 75244

No	Description	Date
----	-------------	------

"Not for  
regulatory  
approval,  
permitting, or  
construction"  
06.21.2019

WDG Architecture Project No:  
B.2019 0000-18036

OVERALL ELEVATIONS

A4.00

CASE NUMBER: 3199801



02 EXTERIOR ELEVATION - NORTH - AREA D  
SCALE: 1/8" = 1'-0"



01 EXTERIOR ELEVATION - EAST - AREA B  
SCALE: 1/8" = 1'-0"

EXTERIOR MATERIAL LEGEND	
Material Key	Material Description
FC-01	FIBER CEMENT LAP SIDING
FC-02	FIBER CEMENT LAP SIDING
FC-03	FIBER CEMENT SIDING
FC-04	FIBER CEMENT SIDING (LIGHT)
GL-01	CLEAR TRANSPARENT GLASS
MAS-01	MANUFACTURED STONE VENEER
MAS-02	KING BRICK VENEER
MAS-03	QUEEN BRICK
MAS-04	METAL BALCONY RAIL
PT-01	PAINT
STU-01	STUCCO SYSTEM - SMOOTH FINISH
VNL-01	VINYL WINDOW FRAMES



SW 7567:  
NATURAL TAN



SW 7018:  
DOVEGRAY



SW 7019:  
GAUJULET GRAY



KING BRICK:  
DOVE GREY



KING BRICK:  
SLATE VELOUR



6' SPILT LIMESTONE:  
CREAM



WDG Architecture Dallas, PLLC  
2001 Bryan Street  
Suite 3100  
Dallas, TX 75201  
tel. 214.749.2311

LYNN CREEK  
GRAND PRAIRIE, TEXAS

TBD



A. G. Spanos Companies  
Contact: Josh Spanos 972.550.9447 office  
14800 Landmark Blvd., Suite 240  
Dallas, TX 75254

No.	Description	Date
-----	-------------	------

"Not for  
regulatory  
approval,  
permitting, or  
construction"  
06.21.2019

WDG Architecture Project No:  
© 2019 0000-18036

EXTERIOR ELEVATIONS  
- NORTH

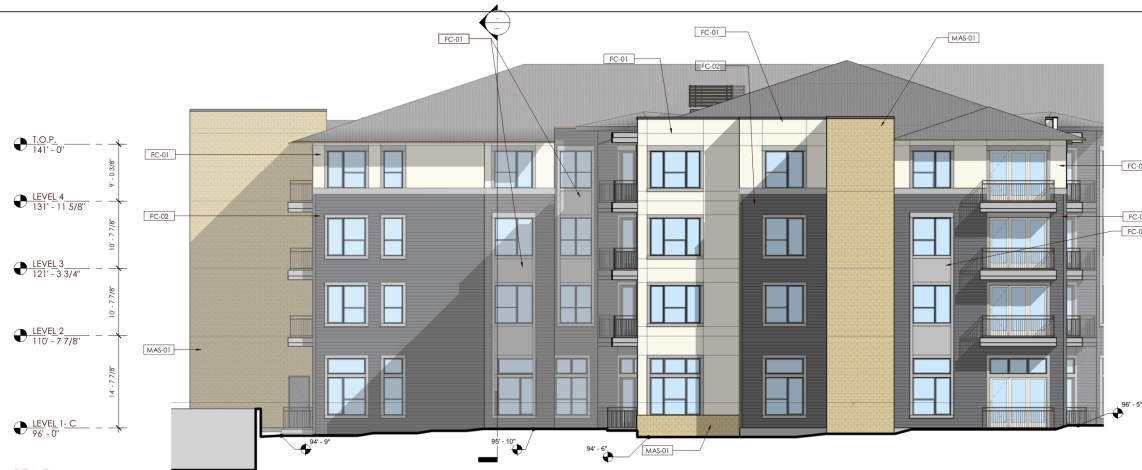
A4.01

CASE NUMBER: 5192001





03 OVERALL ELEVATION - EAST - AREA E  
SCALE: 1/8" = 1'-0"



02 EXTERIOR ELEVATION - NORTH - AREA E  
SCALE: 1/8" = 1'-0"



01 OVERALL ELEVATION - EAST - AREA D  
SCALE: 1/8" = 1'-0"

EXTERIOR MATERIAL LEGEND	
Material Key	Material Description
FC-01	FIBER CEMENT LAP SIDING
FC-02	FIBER CEMENT TRIM
FC-04	FIBER CEMENT SIDING (LIGHT)
GL-01	GLASS TRANSPARENT GLASS
MAS-01	MANUFACTURED STONE VENEER
MAS-02	KING BRICK VENEER
MAS-03	SCOUR BRICK
MS-02	METAL BALCONY RAIL
PF-02	PAINT
SI-01	SILOCO SYSTEM - SMOOTH FINISH
VAL-01	VINYL WINDOW FRAMES







EXTERIOR MATERIAL LEGEND	
Material Key	Material Description
FC-01	FIBER CEMENT LAP SIDING
FC-02	FIBER CEMENT TRIM
FC-03	FIBER CEMENT SIDING (LIGHT)
FC-04	FIBER CEMENT SIDING (DARK)
GL-01	GLASS TRANSPARENT GLASS
MAS-01	MASONRY BRICK (DARK)
MAS-02	MASONRY BRICK (LIGHT)
MAS-03	MASONRY BRICK (DARK)
MAL-01	METAL BALCONY RAIL
PF-01	PAINT
STU-01	STUCCO SYSTEM - SMOOTH FINISH
VNL-01	VINYL WINDOW FRAMES



WDG Architecture Dallas, PLLC  
2001 Bryan Street  
Suite 3100  
Dallas, TX 75201  
Tel: 214.949.8311

LYNN CREEK  
GRAND PRAIRIE, TEXAS

TBD

**AGS**  
A. G. Spanos Companies  
Contact: Josh Boster 972.550.9447 office  
14800 Lindmark Blvd, Suite 240  
Dallas, TX 75244

No	Description	Date
----	-------------	------

"Not for  
regulatory  
approval,  
permitting, or  
construction"  
06.21.2019

WDG Architecture Project No:  
© 2019 0000-18036

EXTERIOR ELEVATIONS  
- SOUTH

A4.03

CASE NUMBER: 1790801

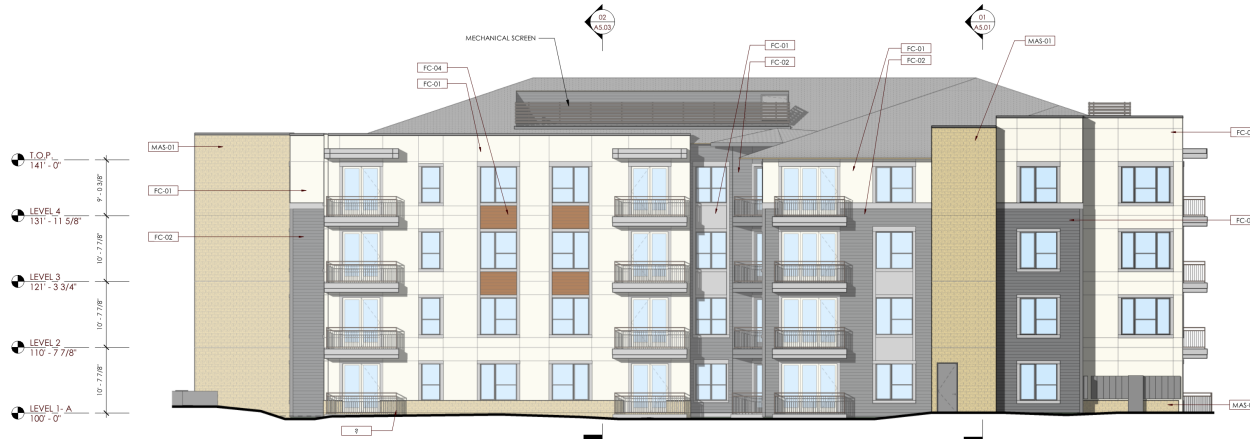
Exhibit C - Building Elevations  
Page 6 of 12



03 OVERALL ELEVATION - WEST - AREA B  
SCALE: 1/8" = 1'-0"



02 EXTERIOR ELEVATION - NORTH - AREA A  
SCALE: 1/8" = 1'-0"



01 OVERALL ELEVATION - WEST - AREA A  
SCALE: 1/8" = 1'-0"

Material Key	Material Description
FC-01	FIBER CEMENT LAP SIDING
FC-02	FIBER CEMENT TRIM
FC-03	FIBER CEMENT TRIM
FC-04	FIBER CEMENT SIDING (LIGHT)
GL-01	CLARAR TRANSPARENT GLASS
MAS-01	MANUFACTURED STONE VENEER
MAS-02	KING BRICK VENEER
MAS-03	SOLDER BRICK
MEL-01	METAL BALCONY RAIL
PT-01	PAINT
STU-01	STUCCO SYSTEM - SMOOTH FINISH
VNL-01	VINYL WINDOW FRAME



WDG Architecture Dallas, PLLC  
2001 Bryan Street  
Suite 3100  
Dallas, TX 75201  
Tel: 214.949.8311

LYNN CREEK  
GRAND PRAIRIE, TEXAS  
TBD

**AGS**  
A. G. Spanos Companies  
Contact: Josh Boller 972.260.9447 office  
14800 Landmark Blvd, Suite 240  
Dallas, TX 75254

No	Description	Date
----	-------------	------

"Not for  
regulatory  
approval,  
permitting, or  
construction"  
06.21.2019

WDG Architecture Project No:  
© 2019 0000-18036

EXTERIOR ELEVATIONS  
- EAST AND WEST

A4.04

CASE NUMBER: 3190801

Exhibit C - Building Elevations  
Page 7 of 12



WDG Architecture Dallas, PLLC  
2001 Bryan Street  
Suite 3100  
Dallas, TX 75201  
Tel: 214.747.2111

LYNN CREEK  
GRAND PRAIRIE, TEXAS  
TBD

**AGS**  
A. G. Spanos Companies  
Contact: Josh Baker 972.550.7447 office  
1460 Livestock Blvd, Suite 240  
Dallas, TX 75254

No	Description	Date
----	-------------	------

"Not for  
regulatory  
approval,  
permitting, or  
construction"  
06.21.2019

WDG Architecture Project No:  
© 2019 0000-18036

EXTERIOR ELEVATIONS  
- COURTYARD 1

A4.05

CASE NUMBER: 1190801

Material Key	Material Description
FC-01	FIBER CEMENT LAP SIDING
FC-02	FIBER CEMENT TRIM
FC-03	FIBER CEMENT SIDING (LIGHT)
FC-04	CLEAR TRANSPARENT GLASS
MAS-01	MANUFACTURED STONE VENEER
MAS-02	KLING BRICK - VENEER
MAS-03	SOLDER BRICK
MIL-01	METAL BALCONY RAIL
PT-01	PAINT
STU-01	STUCCO SYSTEM - SANDOZ FINISH
WNL-01	WINDL WINDOW FRAMES

COURTYARD 1 WEST ELEVATION		
MATERIAL NAME	SQUARE FEET	%
STUCCO	3300 SF	63 %
LAP SIDING	540 SF	10%
BRICK	971 SF	18%
FIBER CEMENT	529 SF	9%

COURTYARD 1 EAST ELEVATION		
MATERIAL NAME	SQUARE FEET	%
STUCCO	2974 SF	60%
LAP SIDING	534 SF	11%
BRICK	957 SF	19%
FIBER CEMENT	530 SF	10%

COURTYARD 1 NORTH ELEVATION		
MATERIAL NAME	SQUARE FEET	%
STUCCO	-	-
LAP SIDING	614 SF	28%
BRICK	1245 SF	57%
FIBER CEMENT	338 SF	15%



3 EXTERIOR ELEVATION - COURTYARD 1 - EAST  
SCALE: 1/8" = 1'-0"

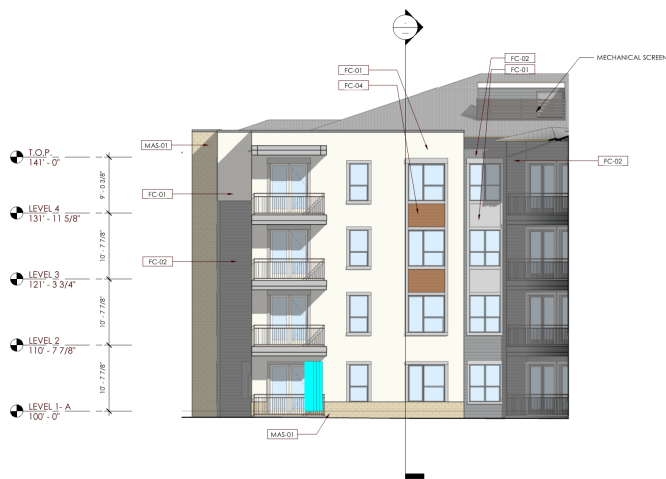
2 EXTERIOR ELEVATION - COURTYARD 1 - NORTH  
SCALE: 1/8" = 1'-0"

1 EXTERIOR ELEVATION - COURTYARD 1 - WEST  
SCALE: 1/8" = 1'-0"





2 EXTERIOR ELEVATION - COURTYARD 2 - WEST  
SCALE: 1/8" = 1'-0"



1 EXTERIOR ELEVATION - COURTYARD 2 - SOUTH  
SCALE: 1/8" = 1'-0"

EXTERIOR MATERIAL LEGEND	
Material Key	Material Description
FC-01	FIBER CEMENT LAP SIDING
FC-02	FIBER CEMENT LAP SIDING
FC-03	FIBER CEMENT LAP SIDING
FC-04	FIBER CEMENT SIDING (LIGHT)
GL-01	GLASS TRANSPARENT GLASS
MAS-01	MANUFACTURED STONE VENEER
MAS-02	KING BRICK VENEER
MAS-03	COLOR BRICK
MTL-05	METAL BALCONY RAIL
PT-02	PAINT
STU-01	STUCCO SYSTEM - SMOOTH FINISH
VNL-01	VINYL WINDOW FRAMES

COURTYARD 2 WEST ELEVATION		
MATERIAL NAME	SQUARE FEET	%
STUCCO	768 SF	28%
LAP SIDING	757 SF	28%
BRICK	748 SF	28%
FIBER CEMENT	427 SF	16%

COURTYARD 2 SOUTH ELEVATION		
MATERIAL NAME	SQUARE FEET	%
STUCCO	987 SF	48%
LAP SIDING	617 SF	30%
BRICK	278 SF	14%
FIBER CEMENT	169 SF	8%



SW 7567: NATURAL TAN



SW 7018: DOVETAIL



SW 7019: GAUNTLET GRAY



KING BRICK: DOVE GREY



KING BRICK: SLATE VELOUR



6' SPLIT LIMESTONE: CREAM

**WDG**  
WDG Architecture Dallas, PLLC  
2001 Bryan Street  
Suite 3100  
Dallas, TX 75201  
Tel: 214.949.5311

LYNN CREEK  
GRAND PRAIRIE, TEXAS  
TBD

**AGS**  
A. G. Spanos Companies  
Contact: Josh Baser 972.550.7447 office  
14800 Lindholm Blvd, Suite 340  
Dallas, TX 75254

No	Description	Date
----	-------------	------

"Not for  
regulatory  
approval,  
permitting, or  
construction"  
04.21.2019

WDG Architecture Project No:  
© 2019 0000-18036

EXTERIOR ELEVATIONS  
- COURTYARD 2

A4.06

CASE NUMBER: 5190801



WDG Architecture Dallas, PLLC  
2001 Bryan Street  
Suite 3100  
Dallas, TX 75201  
Tel. 214.949.5311

LYNN CREEK  
GRAND PRAIRIE, TEXAS

TBD



A. G. Spanos Companies  
Contact: Josh Basler 972.553.9447 office  
14800 Lindstrom Blvd, Suite 240  
Dallas, TX 75254

No.	Description	Date
-----	-------------	------

"Not for  
regulatory  
approval,  
permitting, or  
construction"  
06.21.2019

WDG Architecture Project No:  
© 2019 0000-18036

EXTERIOR ELEVATIONS  
- COURTYARD 2

A4.07

CASE NUMBER: 5190801

EXTERIOR MATERIAL LEGEND

Abbrev. Key	Material Description
FC-01	FIBER CEMENT LAP SIDING
FC-02	FIBER CEMENT TRIM
FC-03	FIBER CEMENT TRIM
FC-04	FIBER CEMENT SIDING (RIGHT)
GL-01	GLASS TRANSPARENT GLASS
MAS-01	MANUFACTURED STONE VENEER
MAS-02	KING BRICK VENEER
MAS-03	SOLID BRICK
MTL-02	METAL BALCONY RAIL
PL-02	PAINT
STU-01	STUCCO SYSTEM - SMOOTH FINISH
VNL-01	VINYL WINDOW FRAMES

COURTYARD 2 EAST ELEVATION		
MATERIAL NAME	SQUARE FEET	%
STUCCO	951 SF	32%
LAP SIDING	1301 SF	44%
BRICK	349 SF	12%
FIBER CEMENT	349 SF	12%

COURTYARD 2 NORTH ELEVATION		
MATERIAL NAME	SQUARE FEET	%
STUCCO	784 SF	41%
LAP SIDING	494 SF	34%
BRICK	89 SF	5%
FIBER CEMENT	338 SF	18%



SW 7267  
NATURAL TAN



SW 7018  
DOVETAIL



SW 7019  
GAUNTLET GRAY



KING BRICK  
DOVE GREY



KING BRICK  
SLATE VELOUR



6\"/>



6\"/>



6\"/>



6\"/>



6\"/>



6\"/>

2 EXTERIOR ELEVATION - COURTYARD 2 - EAST  
SCALE: 1/8" = 1'-0"

1 EXTERIOR ELEVATION - COURTYARD 2 - NORTH  
SCALE: 1/8" = 1'-0"

EXTERIOR MATERIAL LEGEND	
Material Key	Material Description
FC-01	FIBER CEMENT LAP SIDING
FC-02	FIBER CEMENT BRICK
FC-03	FIBER CEMENT SIDING (LIGHT)
FC-04	FIBER CEMENT SIDING (DARK)
GL-01	GLASS TRANSPARENT GLASS
MAS-01	MANUFACTURED STONE VENEER
MAS-02	KING BRICK VENEER
MAS-03	FOUNDER BRICK
MAS-04	METAL BALCONY RAIL
PT-01	PAINT
STU-01	STUCCO SYSTEM - SANDOZ FINISH
VNTL-01	VINTL WINDOW FRAMES

COURTYARD 3 SOUTH ELEVATION		
MATERIAL NAME	SQUARE FEET	%
STUCCO	987 SF	48%
LAP SIDING	417 SF	30%
BRICK	278 SF	14%
FIBER CEMENT	149 SF	8%

COURTYARD 3 WEST ELEVATION		
MATERIAL NAME	SQUARE FEET	%
STUCCO	931 SF	32%
LAP SIDING	1301 SF	44%
BRICK	349 SF	12%
FIBER CEMENT	349 SF	12%



SW 7567:  
NATURAL TAN



SW 7018:  
DOVETAIL



SW 7019:  
GAUNTLET GRAY



KING BRICK  
DOVE GREY



KING BRICK  
SLATE YELLOW



6\"/>

LYNN CREEK  
GRAND PRAIRIE, TEXAS

TBD

**AGS**  
A. G. Spanos Companies  
Contact: Josh Boster 972.550.1447 office  
14800 Linderoth Blvd, Suite 340  
Dallas, TX 75254

No.	Description	Date
-----	-------------	------

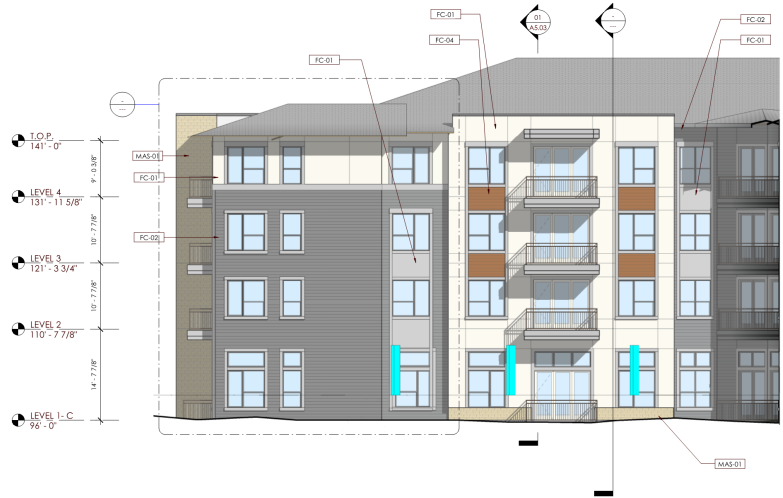
"Not for  
regulatory  
approval,  
permitting, or  
construction"  
06.21.2019

WDG Architecture Project No:  
© 2019 0000-18036

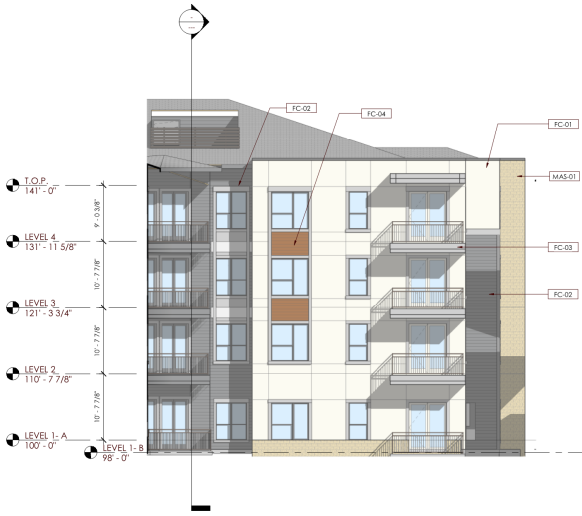
EXTERIOR ELEVATIONS  
- COURTYARD 3

A4.08

CASE NUMBER: 5190801



2 EXTERIOR ELEVATION - COURTYARD 3 - WEST  
SCALE: 1/8\"/>



1 EXTERIOR ELEVATION - COURTYARD 3 - SOUTH  
SCALE: 1/8\"/>





② EXTERIOR ELEVATION - COURTYARD 3 - EAST  
SCALE: 1/8" = 1'-0"



① EXTERIOR ELEVATION - COURTYARD 3 - NORTH  
SCALE: 1/8" = 1'-0"

EXTERIOR MATERIAL LEGEND	
Material Key	Material Description
FC-01	FIBER CEMENT LAP SIDING
FC-02	FIBER CEMENT LAP SIDING
FC-03	FIBER CEMENT TBM
FC-04	FIBER CEMENT SIDING (LIGHT)
FC-05	FIBER CEMENT SIDING (DARK)
MAS-01	MANUFACTURED STONE VENEER
MAS-02	KING BRICK VENEER
MAS-03	SOLDER BRICK
MAS-04	METAL BALCONY RAIL
PT-01	PAINT
STU-01	STUCCO SYSTEM - SMOOTH FINISH
WNL-01	WNL WINDOW FRAMES

COURTYARD 3 NORTH ELEVATION		
MATERIAL NAME	SQUARE FEET	%
STUCCO	786 SF	41%
LAP SIDING	694 SF	36%
BRICK	89 SF	5%
FIBER CEMENT	338 SF	18%

COURTYARD 3 EAST ELEVATION		
MATERIAL NAME	SQUARE FEET	%
STUCCO	748 SF	28%
LAP SIDING	757 SF	28%
BRICK	748 SF	28%
FIBER CEMENT	427 SF	16%



WDG Architecture Dallas, PLLC  
2001 Bryan Street  
Suite 3100  
Dallas, TX 75201  
Tel: 214.949.3311

LYNN CREEK  
GRAND PRAIRIE, TEXAS

TBD

AGS  
A. G. Spanos Companies  
Contact: Josh Bader 972.593.8447 office  
14800 Leominster Blvd, Suite 240  
Dallas, TX 75254

No	Description	Date
----	-------------	------

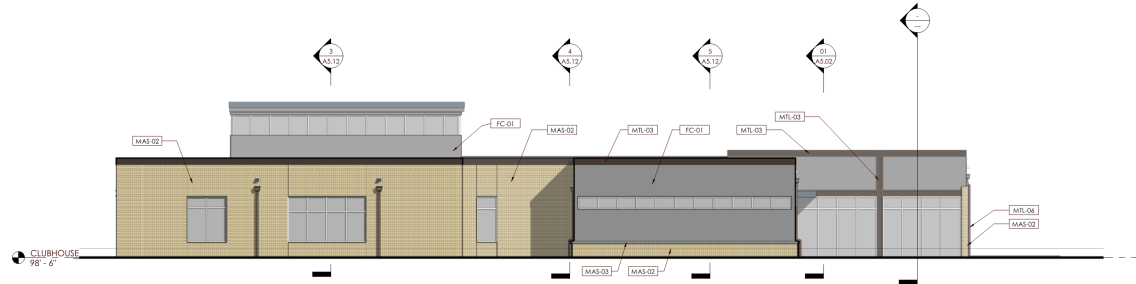
"Not for  
regulatory  
approval,  
permitting, or  
construction"  
04.21.2019

WDG Architecture Project No:  
© 2019 0000-18036

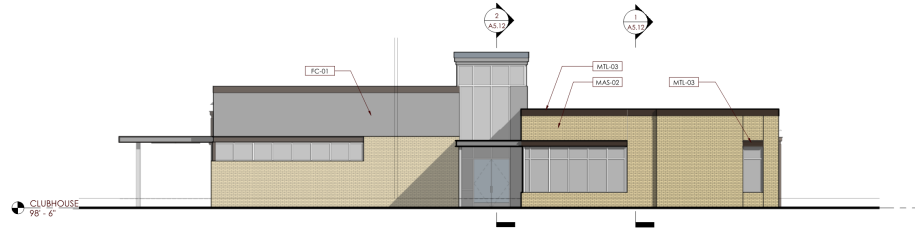
EXTERIOR ELEVATIONS  
- COURTYARD 3

A4.09

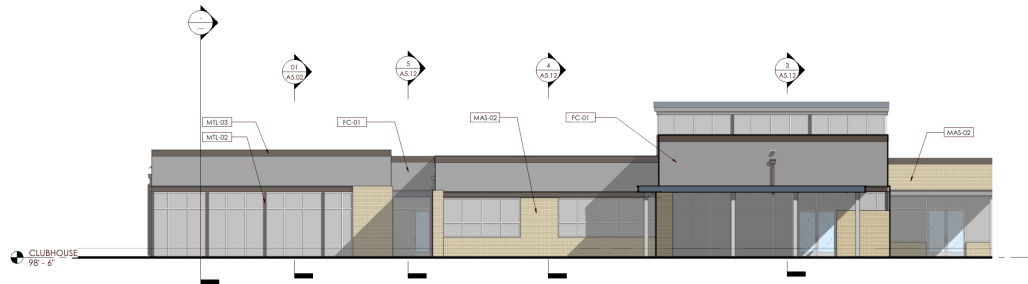
CASE NUMBER: 1319001



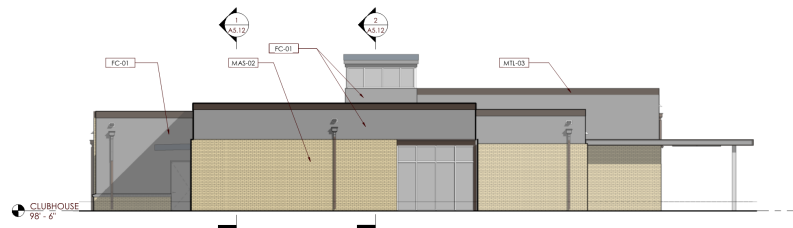
01 EXTERIOR ELEVATION - CLUBHOUSE - NORTH  
SCALE: 1/8" = 1'-0"



02 EXTERIOR ELEVATION - CLUBHOUSE - EAST  
SCALE: 1/8" = 1'-0"



03 EXTERIOR ELEVATION - CLUBHOUSE - SOUTH  
SCALE: 1/8" = 1'-0"



04 EXTERIOR ELEVATION - CLUBHOUSE - WEST  
SCALE: 1/8" = 1'-0"

OVERALL NORTH ELEVATION		
MATERIAL NAME	SQUARE FEET	%
BRICK	1,067 SF	58 %
FIBER CEMENT	774 SF	42 %

OVERALL EAST ELEVATION		
MATERIAL NAME	SQUARE FEET	%
BRICK	839 SF	72 %
FIBER CEMENT	333 SF	28 %

OVERALL SOUTH ELEVATION		
MATERIAL NAME	SQUARE FEET	%
BRICK	445 SF	40 %
FIBER CEMENT	669 SF	60 %

OVERALL WEST ELEVATION		
MATERIAL NAME	SQUARE FEET	%
BRICK	755 SF	52 %
FIBER CEMENT	684 SF	48 %



SW 7567: NATURAL TAN



SW 7018: DOVE GRAY



SW 7019: GRANULITE GRAY



KING BRICK: DOVE GRAY



KING BRICK: SLATE VELOUR



4' SPLIT LIMESTONE: CREAM