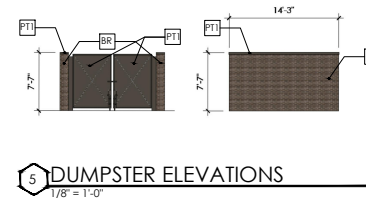
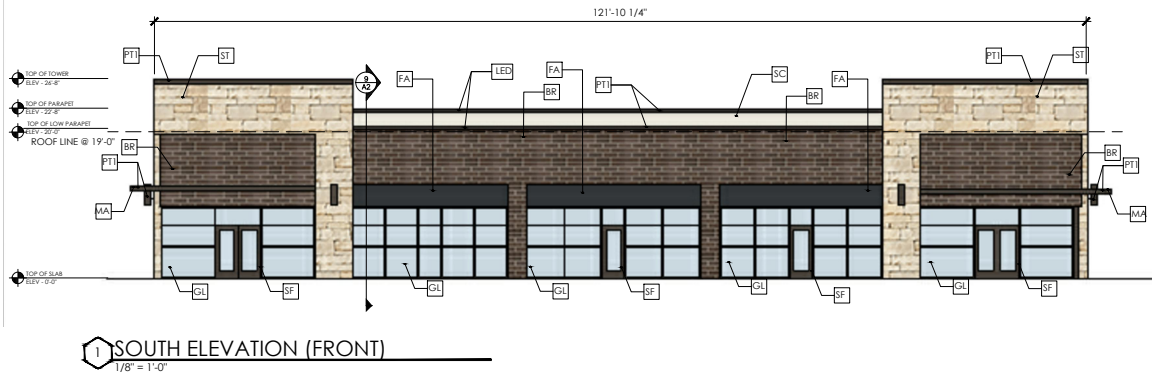


Exhibit C - Building Elevations

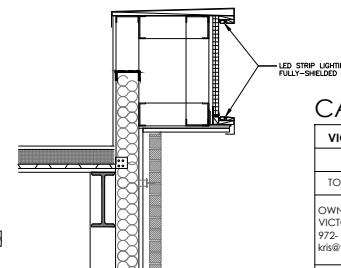
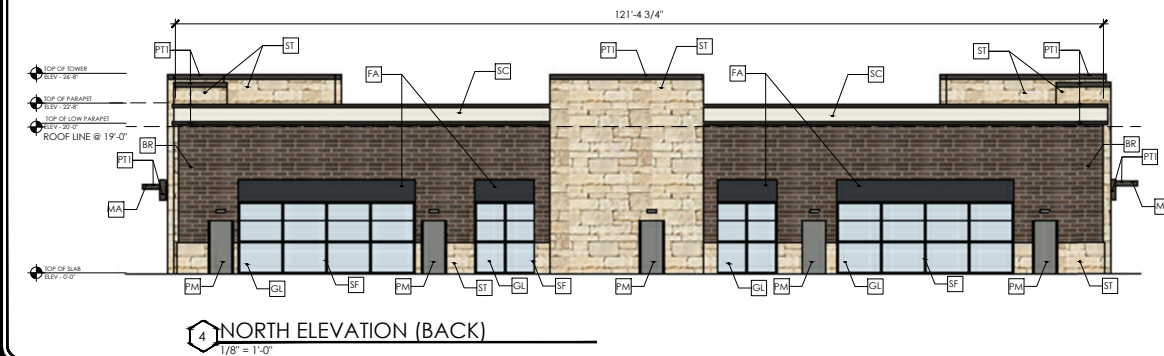
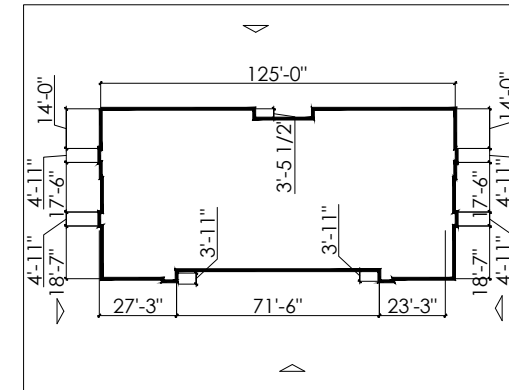
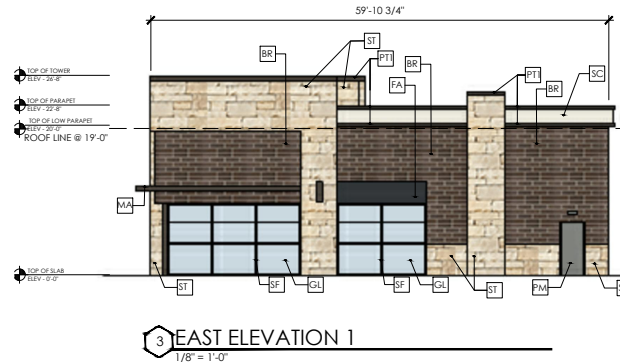
Page 1 of 1



- 6 MATERIAL LEGEND
NTS
- ST TEXAS LESTONE
 - SF STOREFRONT ALUMINUM - DARK BRONZE
 - BR BRICK - ENDICOTT EXECUTIVE IRONSPOT
 - GL STOREFRONT GLAZING - SNX 51/23
 - SC STUCCO - SW 7009 PEARLY WHITE
 - PM PAINTED METAL - SW 7067 CITYSCAPE
 - PTI PAINT - SW 7055 ENDURING BRONZE
 - FA FABRIC AWNING - BLACK
 - MA METAL AWNING
 - LED LED STRIP LIGHTING FULLY-SHIELDED

ELEVATION	AREAS	Doors/ Windows	NET	MATERIALS			
				ST	BR	SC	PM
Front (South)	3,036 SF	1,038 SF	1,998 SF	572 SF 29%	1,178 SF 59%	143 SF 7%	105 SF 5%
Back (North)	2,915 SF	734 SF	2,181 SF	625 SF 29%	1,255 SF 58%	218 SF 10%	84 SF 3%
Side (East)	1,489 SF	313 SF	1,176 SF	462 SF 39%	599 SF 51%	50 SF 4%	66 SF 6%
Side (West)	1,489 SF	298 SF	1,191 SF	476 SF 40%	619 SF 51%	66 SF 5%	50 SF 4%

7 MATERIAL MATRIX
NTS



CASE # S180502

VICTORY AT LAKERIDGE #3		ARCHITECT:
Lot	Block	TYPE - SIX DESIGN
TOWN PROJECT #		HAYES HINKLE
OWNER:		817-680-2195
VICTORY REAL ESTATE GROUP, KRIS RAMJII		hayes.hinkle@type-six.com
972-707-9555		
kris@victoryrealestategroup.com		CIVIL:
		KIRKMAN ENGINEERING, SHEA KIRKMAN
		817-488-4960
		shea.kirkman@trustkg.com

This facade plan is for conceptual purposes only. All building plans require review and approval from the building inspections Department. All mechanical equipment shall be screened from public view. Rooftop mounted equipment shall be screened by a parapet wall or screening wall. Screening walls shall meet the specifications of the zoning ordinance. When permitted, exposed utility boxes and conduits shall be painted to match building.

SHEET NUMBER

A2



TYPE SIX DESIGN AND DEVELOPMENT SERVICES
305 E. ARLAND ST. #150
ARLINGTON, TX 76010
PROJECT MANAGER
TODD@TYPE-SIX.COM
817-680-2195

VICTORY AT LAKERIDGE
BUILDING 3

VICTORY|GROUP

V_1705

ARCHITECT
D. HAYES HINKLE

ISSUE DATE
4 23 2018

ISSUED FOR
Review

REVISIONS

Description	Date

SHEET NAME
ELEVATIONS

NOT FOR REGULATORY
APPROVAL, PERMITTING, OR
CONSTRUCTION.

4.23.2018