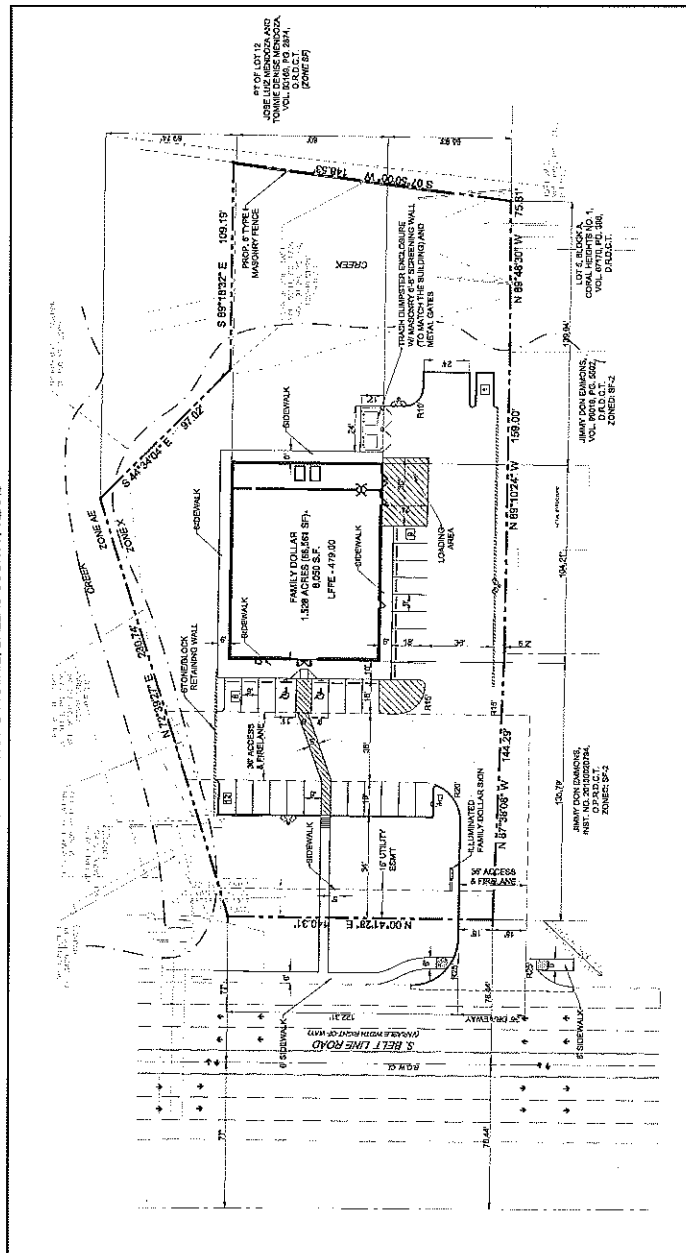
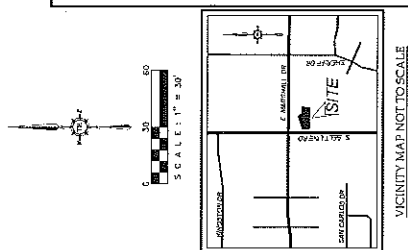


FAMILY DOLLAR STORE DEVELOPMENT PLANS
1.528 ACRES BEING PART OF LOTS 12, AND 14, BLOCK A, OF LAKELAND HEIGHTS ADDITION
CITY OF GRAND PRAIRIE, DALLAS COUNTY, TEXAS



GENERAL NOTES

- [illegible]

LOODPLAIN NOTE

This is to certify that a portion of the subject property shown between lines with the 100 Year Flood Hazard Area as shown on the Flood Insurance Rate Map, Community Panel No. 48112C-1551, dated 07-07-2014. The acreage is located in Zone "A-E."

SITE DATA SUMMARY CHART

[illegible]

<p>CAJAL BANDON GROUP 2709 MONTLEON ROAD SUITE 200 GARDEN PRairie, TX 75651</p>	<p>SHIRAZTOR A & W SERVICES INC. MEASURE IN THE F CONTRACTORS & P.L.S. (727) 891-4871</p>
<p>TRANSIT ENGINEERING LLC 1520 ASTOR DRIVE HOUSTON, TEXAS 77058 CONTACT: KATHY VAN DYKE TEL: 214/509-9271 EMAIL: KPVAN@TRANSCOLOR.COM</p>	<p>DEVELOPER MAX ALLY REFINANCING LLO 3000 GALLERIA CIRCLE TUCKERMAN, TEXAS 75263 CONTACT: JIMMY D. BROWN TELE: (972) 223-8000</p>

LEGEND	
PUE	PUBLIC UTILITY EXPENSE
SE	SANITARY SEWER EXEMPT
DE	DEVELOPMENT EXPENSE
WE	WATERLINE EXPENSE
C.G.	CLEAN OUT
DM	GAS METER
ET	ELECTRICAL TRANSFORMER
FH	FIRE HYDRANT
55MH	SANITARY SEWER MANHOLE
STAN94	STORM SEWER MANHOLE
B.S.	BUILDING SET BACK
LS	LANDSCAPE SETBACK
F.D.C.	FIRE DEPARTMENT CONNECTIONS
LFPE	LOWEST FINISH FLOOR ELEVATION
	ADJUSPED 2" FIRE LINE

LEGEND	
EX. BOUNDARY	EX. TELEPHONE PEDestal
EX. CATCHER MAN	EX. GUY WIRE
EX. SLOTTED MAN	BOUNDARY LINE
EX. SLOTTED SEWER	PROP. CUBED
EX. SEWER MANHOLE	PROP. SAW-CUT
EX. CLEAN OUT	PROP. AREA LIGHT
EX. ELECTRIC	PROP. HANDICAP SIGN
EX. POWER POLE	PROP. HANDICAP LOGO
EX. STORM SEWER	PROP. CONCRETE WHEEL STOP
EX. FIRE HYDRANT	PROP. MONUMENT POLE SIGN
EX. STORM INLET	PIPE BOLLARD
EX. FENCE	PROP. WATER METER
EX. WATER METER	PROP. METAL FENCE
EX. TREE	PROP. SEWER CLEAN OUT
EX. TELEPHONE	PROP. GAS METER
EX. FIBER OPTIC CABLE	PROP. RETAINING WALL
EX. GAS METER	PROP. BACK FLOW PREVENTER
EX. GAS LINE	
EX. TRAFFIC SIGNAL POLE	
EX. TRAFFIC SIGNALS	

CASE NO. S161102

SITE PLAN

FAMILY DOLLAR
2010 S. BELT LINE ROAD
CITY OF GRAND PRAIRIE
DALLAS COUNTY, TEXAS



ENGINEERING ETC.
T: 314.808.9771 | F: 404.309.2755 | E: info@engineering-etc.com
W: www.eng-etc.com | C: 1533 McDermott Drive, Suite 200, Allen, TX 75013

TEAM	DRAWN	DATE	SCALE	PROJECT NO.	SHEET NO.
KP	PG	16/05/16	1"=30'	035-16	3

[illegible]

Planning Department

~~NOV 02 2016~~

Received