



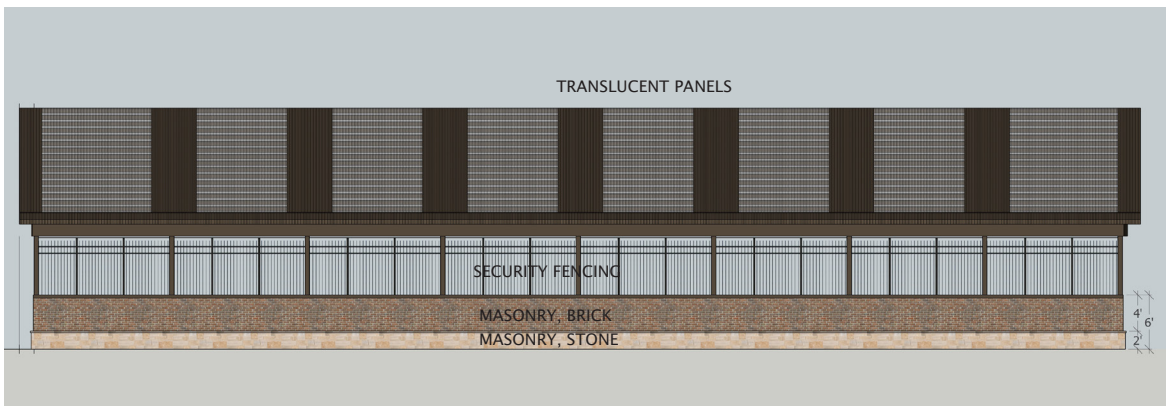
## BULK MATERIAL BINS

1. MASONRY UNITS - 2' X 2' X 4-6'
2. MASONRY UNITS ARE MODULAR CONCRETE BLOCKS
3. BIN WALLS FACING STREET WILL BE CLAD WITH MATERIALS TO MATCH OFFICE STRUCTURE



## COVERED STORAGE AREA

1. METAL CONSTRUCTION - OPEN AIR
2. MASONRY SCREENING WALL FACING STREET
3. TRANSLUCENT ROOFING PANELS
4. SECURITY FENCING ON ALL SIDES
5. MATERIALS TO MATCH OFFICE STRUCTURE



**Date**  
November 2, 2017

**Sheet Title**

**Covered Storage and Bin Design**

**SU171103/S171105**

**Owner/Developer**

Naturomulch, LLC  
Omprakash Goyal (Doctor)  
2008 Devin Lane  
Lewisville, Texas 75067  
214.227.2212 (office)  
naturomulch@gmail.com