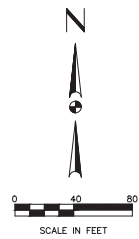


Mary Bessler, Et. Al.
Vol. 99252 Pg.0010
D.R.D.C.T.

John Spoon Abst. 1326
Tract 21 Pg. 150

LANDSCAPING LEGEND

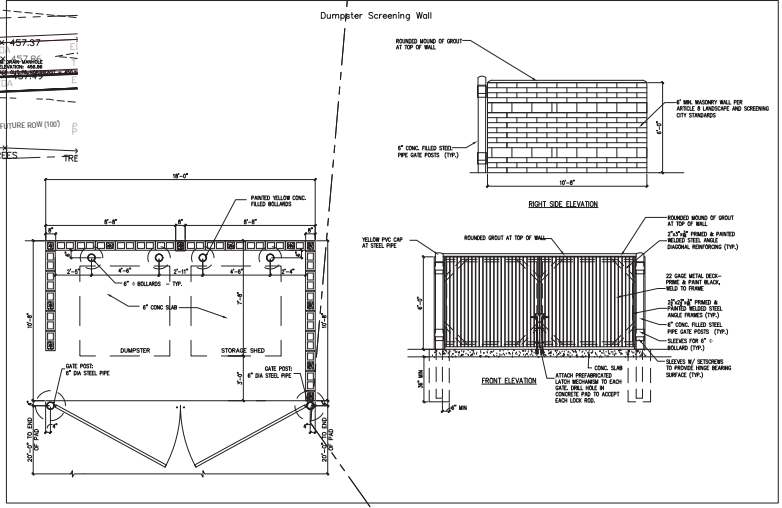
- PROPOSED 3" TEXAS RED OAK TREE
- PROPOSED 5 GAL. CRIMSON PYGMY BARBERRY SHRUB UNLESS NOTED
- PROPOSED BURMUDA GRASS SOD



Aerial Not to Scale

Landscaping Table					
Item	Standard	Required	Provided	Meets	Notes
Site Area, sf	147453				
Landscaping Area for LI	4%	5,030	31,592	Yes	
Site Trees per xx sf	500	12	12	Yes	
Frontage, ft	262				
Street Trees @ 25'-50'	40	7	9	Yes	
Parking Spaces	15				
Parking Trees per xx spaces	20	1	1	Yes	
Shrubs per xsf	50	110	124	Yes	

NOTE:
Landscaped areas to be irrigated by irrigation system, to be installed by design/build irrigation firm



SALCEDO GROUP, INC.
REGISTRATION NO. F-5482
CONCEPTUAL - FOR INTERIM
REVIEW ONLY.

THESE DOCUMENTS ARE FOR INTERIM REVIEW AND
NOT INTENDED FOR CONSTRUCTION, RECORDING, OR
PERMIT PURPOSES. THEY HAVE BEEN PREPARED BY, OR
UNDER THE SUPERVISION OF,

LEWIS M. SALCEDO - PE #4821 10-23-17
DATE

4	Δ			
3	Δ			
2	Δ			
1	Δ			
No.	Description			Date
Revisions				
LANDSCAPING PLAN				
Natuermulch Product Showroom 3.385 Acre / 147,453 SF Tract John Spoon Survey, Abstract No. 1326 690 & 706 W. Shady Grove Rd. Grand Prairie, Texas				
Case Number: SU171103/S171105				
SGI Salcedo Group, Incorporated Civil Engineers - Surveyors 110 SW 2nd Street - Grand Prairie, Texas 75050 Phone: (214) 412-3122 Fax: (214) 412-3089 www.salcedogroupinc.com Texas P.E. F-5482 : Texas TBPLS Firm License 10070800				
DESIGN	DRAWN	CHECK	DATE	SCALE
LMS	SG	LMS	10/23/17	AS NOTED
NOTES	FILE	NO.		

Nov 02 2017 11:15am Salcedo
M:\Projects\17798_natuermulch_690&706\Drawings\Landscaping\landscap.dwg



SGI J17798