



Conceptual artist rendering
and may not reflect final design



ARISE GRAND PRAIRIE
Conceptual Core - Open Space Perspective



Exhibit E - Conceptual Open Space and Landscape Plan
Page 2 of 7

These documents are protected by copyright and may not be reproduced, in whole or in part, in any form or by any means, electronic or mechanical, without express written consent of the owner and In2x Studio, LLC. Unauthorized reproduction may subject you to civil and criminal liability.

| PLANT MATERIALS LEGEND | | | | |
|------------------------|--|----------------------------|-----|---------------------|
| Sym. | Plant Name | Size | Qty | Remarks |
| Trees | | | | |
| | <i>Acer palmatum</i> Japanese maple | 2" CAL. 6' HT. MIN. | - | 8 & 8 SRAIGHT TRUNK |
| | <i>Cercis canadensis</i> Eastern Redbud | 2"-3" CAL. 6'-10' HT. MIN. | - | 8 & 8 SRAIGHT TRUNK |
| | <i>Lagerstrœmia (varied)</i> Crabapple | 2"-3" CAL. 6'-10' HT. MIN. | - | 8 & 8 SRAIGHT TRUNK |
| | <i>Pittacopsis chinensis</i> Chinese Pistache | 2"-3" CAL. 6'-10' HT. MIN. | - | 8 & 8 SRAIGHT TRUNK |
| | <i>Quercus macrocarpa</i> Bur Oak | 3" CAL. 10' HT. MIN. | - | 8 & 8 SRAIGHT TRUNK |
| | <i>Quercus muhlenbergii</i> Chickadee Oak | 2"-3" CAL. 6'-10' HT. MIN. | - | 8 & 8 SRAIGHT TRUNK |
| | <i>Quercus shumardii</i> Red Oak | 2"-3" CAL. 6'-10' HT. MIN. | - | 8 & 8 SRAIGHT TRUNK |
| | <i>Quercus virginiana</i> Southern Live Oak | 3" CAL. 10' HT. MIN. | - | 8 & 8 SRAIGHT TRUNK |
| | <i>Ulmus crassifolia</i> Cocke Elm | 3" CAL. 10' HT. MIN. | - | 8 & 8 SRAIGHT TRUNK |
| | TURF GRASS | | | |
| | NATIVE GRASSES | | | |
| | 3'-5' SIDEWALKS | | | |
| | HEADERING SOFT SURFACE TRAIL (4'-6') | | | |

LANDSCAPE CALCULATIONS:

| | |
|--|--------------------------|
| OVER ALL SITE AREA | 14.43 ACRES 628,444 S.F. |
| REQUIRED LANDSCAPE AREA (15%) | 2.16 ACRES 94,266 S.F. |
| PROVIDED LANDSCAPE AREA (40%) | 5.80 ACRES 252,880 S.F. |
| SITE TREES REQUIRED (94,266 / 500 = 189) | |
| SITE TREES PROVIDED (3" CAL.) | |
| STREET TREES REQUIRED: ALL DRIVE AISLES - 2,487 L.F. REQUIRED 30' LANDSCAPE BUFFER - PROVIDED 15' BUFFER | |
| STREET TREES 3" CAL. REQUIRED (2,487 / 50 = 50) | |
| STREET TREES PROVIDED (3" CAL.) | |
| PARKING LOT TREES REQUIRED: PARKING SPACES - 294 REQUIRED 1 - 3" CAL. REQUIRED (294 / 20 = 15) | |
| PARKING TREES PROVIDED (3" CAL.) | |
| 5 GALLON SHRUBS REQUIRED: 1 - 5 GALLON SHRUB PER 50 S.F. OF REQUIRED LANDSCAPE AREA | |
| SHRUBS REQUIRED (94,266 / 50 = 1885) | |
| 5 GALLON SHRUBS TO BE PROVIDED | |

UTILITY EASEMENT BUFFER
SEE TYPICAL DETAIL & SECTION
"A" & "1" SHEET SP1.2

CAMP WISDOM STREET SECTION LANDSCAPE
SEE TYPICAL DETAIL & SECTION
"B" & "2" SHEET SP1.2

UTILITY EASEMENT BUFFER
SEE TYPICAL DETAIL & SECTION
"A" & "1" SHEET SP1.2

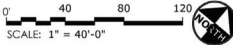
COMMUNITY GATE
SEE DETAIL C, SHEET SP1.1

CAMP WISDOM ROAD

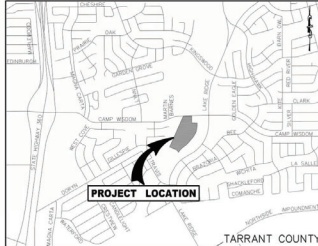
ENTRY SIGNAGE
SEE DETAIL B,
SHEET SP1.1

COMMUNITY GATE
SEE DETAIL C, SHEET SP1.1

RETAIL LANDSCAPE BUFFER
SEE PLANS BY HP CIVIL ENGINEERS
FOR TYPICAL EXECUTION



VICINITY MAP:



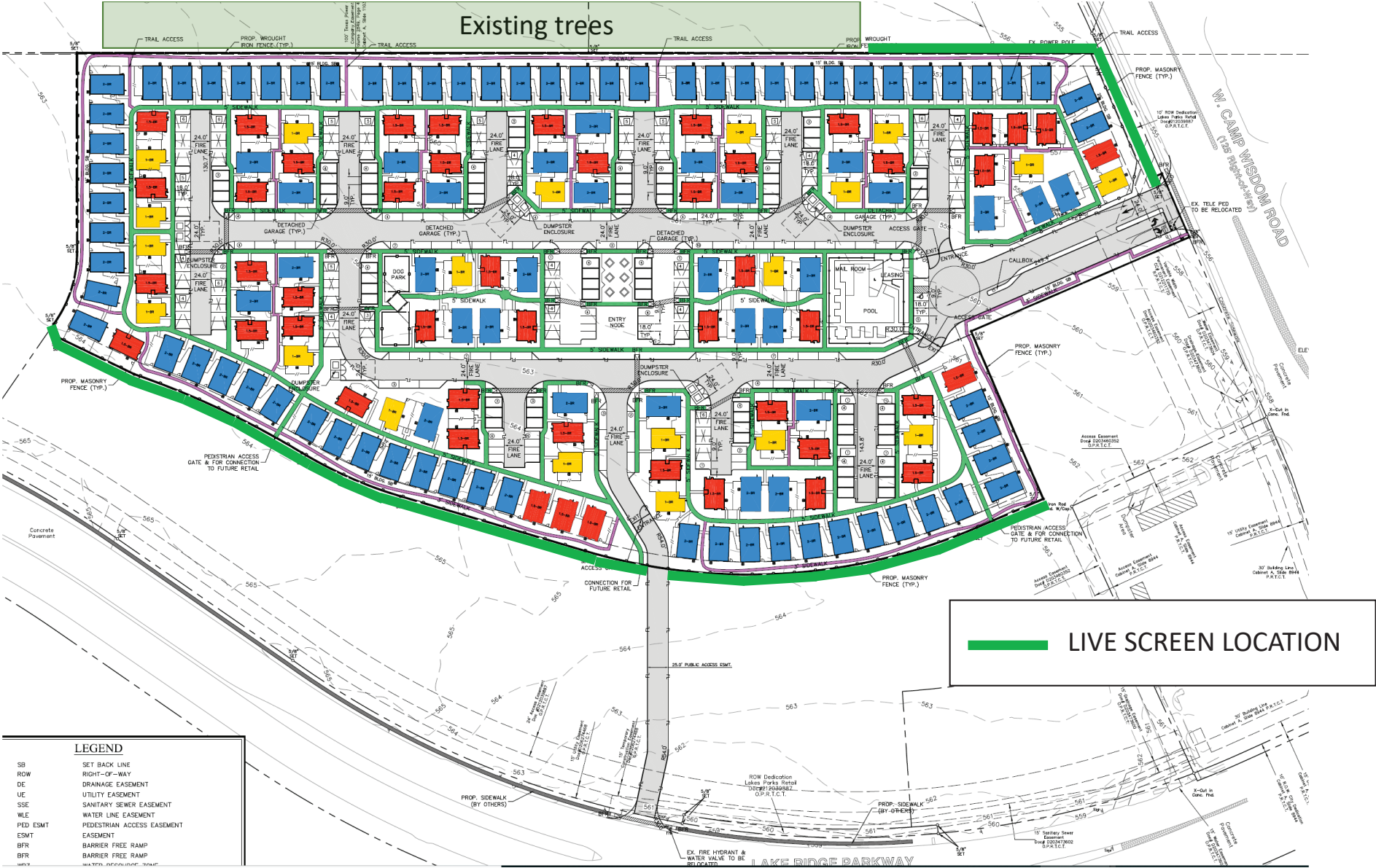
04/15/2019
100%-COMPLETE

ARISE GRAND PRAIRIE
CONCEPTUAL LANDSCAPE PLAN



revisions:
07-12-19 CITY COMMENTS
project #:
FDG002
scale:
1"=40'-0"
issued for:
REVIEW
drawn by:
TEAM

LANDSCAPE ARCHITECTURE
PLANNING
SITE DESIGN
STUDIO
drawing:
SITE PLAN
SP1.0
01 of 03
TARRANT COUNTY
Copyright © 2017 by In2x Studio, LLC



Live Screen Examples (Lake Parks Community)



Proposed Live Screen

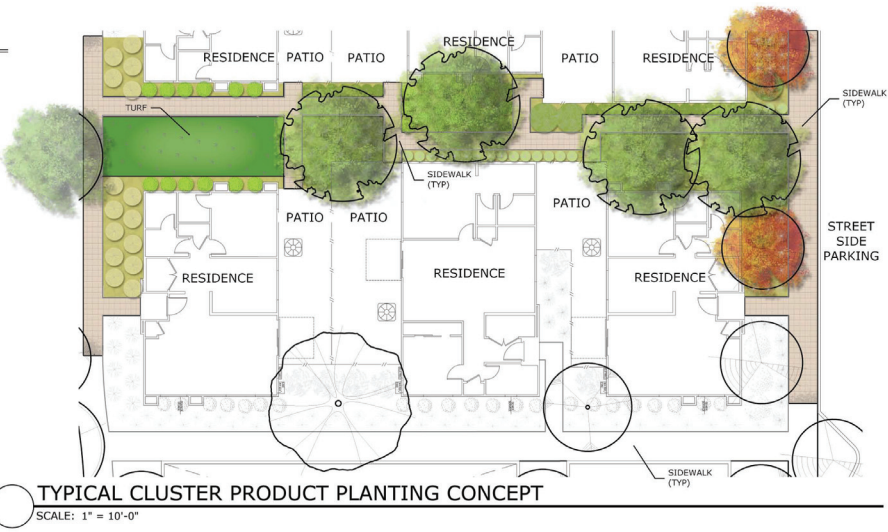


Exhibit E - Conceptual Open Space and Landscape Plan
Page 6 of 7

These documents are protected by copyright and may not be reproduced, in whole or in part, in any form or by any means, electronic or mechanical, without express written consent of the owner and In2a Studio, LLC. Unauthorized reproduction may subject you to civil and criminal liability.

| PLANT MATERIALS LEGEND | | | | | PLANT MATERIALS LEGEND | | | | |
|------------------------|--|----------------------------|-----|----------------------|------------------------|--|---------|-----|---------|
| Sym. | Plant Name | Size | Qty | Remarks | Sym. | Plant Name | Size | Qty | Remarks |
| Trees | | | | | Shrubs | | | | |
| | <i>Acer palmatum</i> Japanese maple | 2" CAL. 6' HT. MIN. | - | 8 & 8 STRAIGHT TRUNK | | <i>Cotoneaster glaucophyllus</i> Grayed Cotoneaster | 5 GAL | - | - |
| | <i>Cercis canadensis</i> Eastern Redbud | 2"-3" CAL. 6'-10' HT. MIN. | - | 8 & 8 STRAIGHT TRUNK | | <i>Elaeagnus pungens</i> Tram olive | 5 GAL | - | - |
| | <i>Lagerstroemia</i> (variety TRD) Crape myrtle | 2"-3" CAL. 6'-10' HT. MIN. | - | 8 & 8 STRAIGHT TRUNK | | <i>Hypericaceae puriflorum</i> Red Yucca | 5 GAL | - | - |
| | <i>Pistacia chinensis</i> Chinese Pistache | 2"-3" CAL. 6'-10' HT. MIN. | - | 8 & 8 STRAIGHT TRUNK | | <i>Hypericum henryi</i> Goldenrope St. Johnswort | 1-5 GAL | - | - |
| | <i>Quercus macrocarpa</i> Bur Oak | 3" CAL. 10' HT. MIN. | - | 8 & 8 STRAIGHT TRUNK | | <i>Rosa vitifolia</i> "Nana" Dwarf Yapon Holy | 5-7 GAL | - | - |
| | <i>Quercus muhlenbergii</i> Chickadee Oak | 2"-3" CAL. 6'-10' HT. MIN. | - | 8 & 8 STRAIGHT TRUNK | | <i>Lagerstroemia indica</i> Dwarf Crape Myrtle | 5-7 GAL | - | - |
| | <i>Quercus shumardii</i> Red Oak | 2"-3" CAL. 6'-10' HT. MIN. | - | 8 & 8 STRAIGHT TRUNK | | <i>LaurelSophora secundiflora</i> Texas Mah | 5-7 GAL | - | - |
| | <i>Quercus virginiana</i> Southern Live Oak | 3" CAL. 10' HT. MIN. | - | 8 & 8 STRAIGHT TRUNK | | <i>Leucophyllum frutescens</i> Texas Sage | 5 GAL | - | - |
| | <i>Ulmus crassifolia</i> Cedar Elm | 3" CAL. 10' HT. MIN. | - | 8 & 8 STRAIGHT TRUNK | | <i>Liriodie spp</i> Ukole | 1-5 GAL | - | - |
| | | | | | | <i>Lonicera japonica</i> Japanese honeysuckle | 5 GAL | - | - |

| PLANT MATERIALS LEGEND | | | | |
|------------------------|---|---------|-----|---------|
| Sym. | Plant Name | Size | Qty | Remarks |
| | <i>Muhlenbergia capillaris</i> "Regal Mist" Regal Mist | 1-5 GAL | - | - |
| | <i>Pyracantha</i> Firethorn Pyracantha | 1-5 GAL | - | - |
| | <i>Rosmarinus officinalis</i> Rosemary "Tuscan Blue" | 5-7 GAL | - | - |



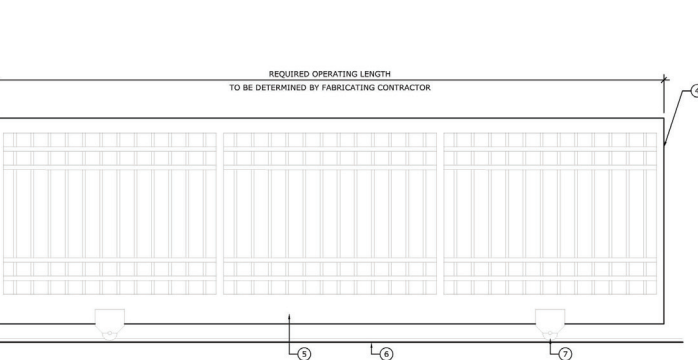
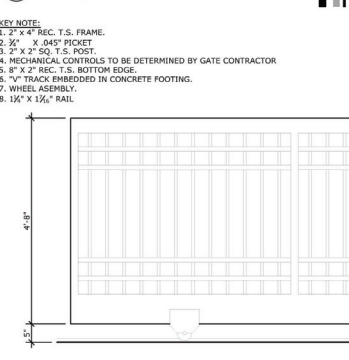
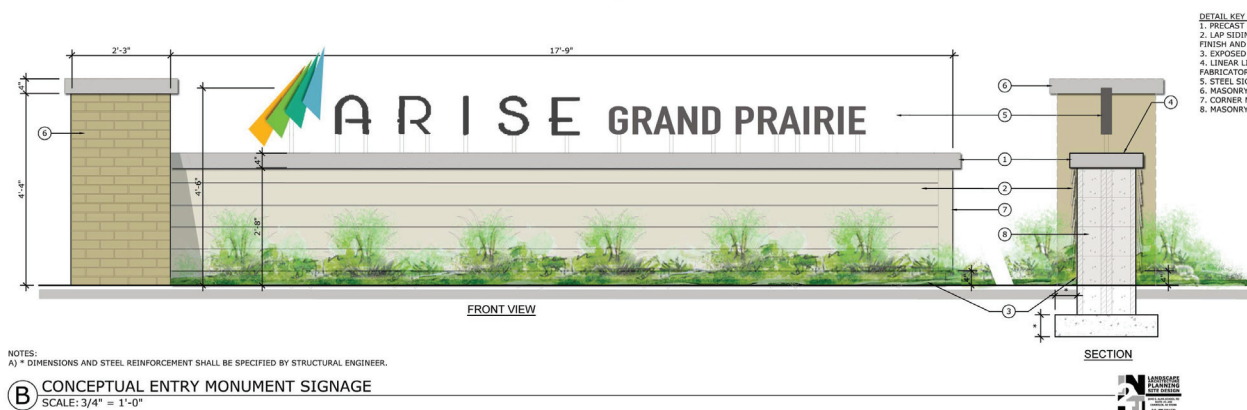
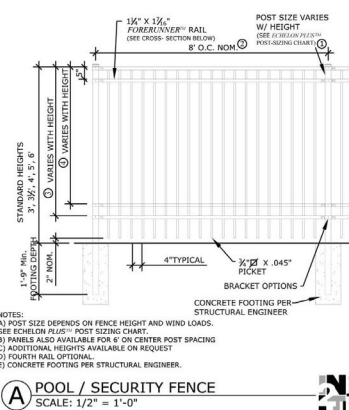
ARISE GRAND PRAIRIE
CONCEPTUAL LANDSCAPE PLAN

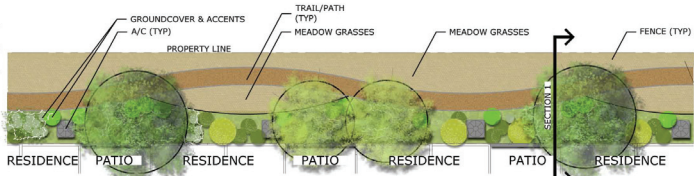


revisions:
07-12-19 CITY COMMENTS
project #:
FDG002
scale:
VARIES
issued for:
REVIEW
drawn by:
TEAM



drawing:
SITE PLAN
SP1.1
02 of 03
Copyright © 2017 by In2a Studio, LLC





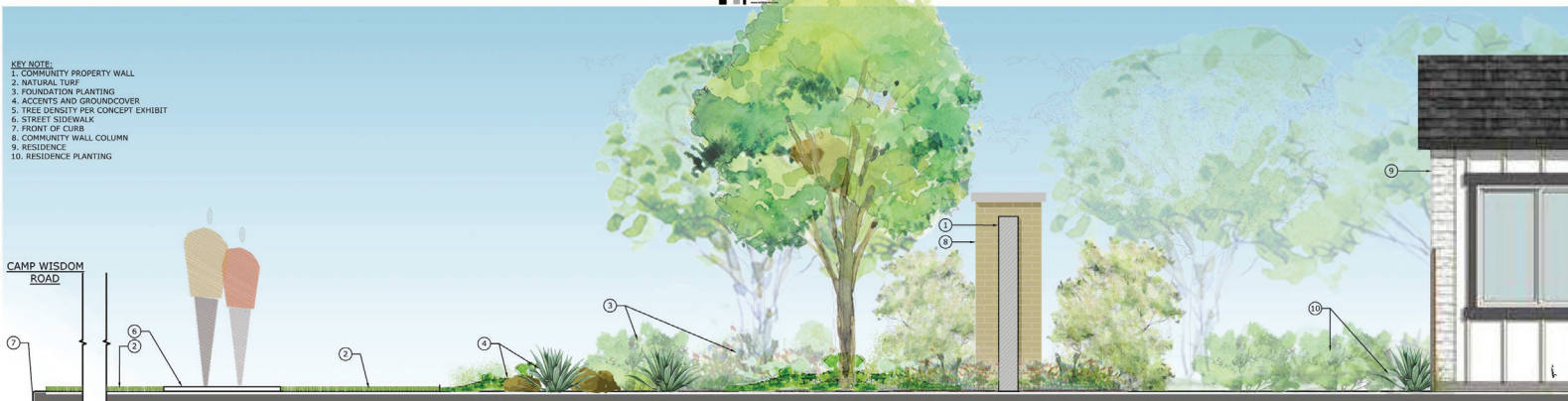
A TYPICAL MEADOW GRASS TRAIL/PATH PLANTING CONCEPT

SCALE: 1" = 10'-0"



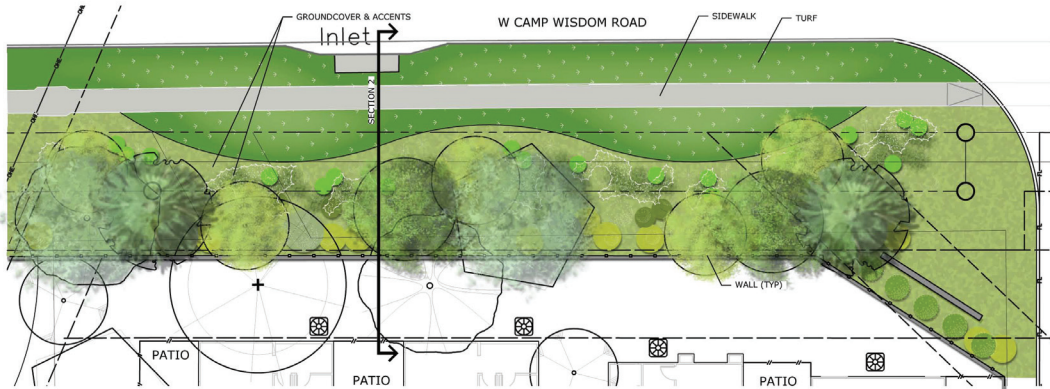
1 MEADOW GRASS TRAIL CONCEPT SECTION

SCALE: 1/2" = 1'-0"



2 TYPICAL CAMP WISDOM ROAD PLANTING CONCEPT SECTION

SCALE: 1/2" = 1'-0"



B TYPICAL CAMP WISDOM ROAD PLANTING CONCEPT

SCALE: 1" = 10'-0"



04/15/2019
100%-COMPLETE



ARISE GRAND PRAIRIE
CONCEPTUAL LANDSCAPE PLAN



revisions:
△ 07-12-19 CITY COMMENTS
△
△

project #: FDG002
scale: VARIES
issued for: REVIEW
drawn by: TEAM



drawing: SITE PLAN

SP1.2
03 of 03

Copyright © 2017 by In2It Studio, LLC