

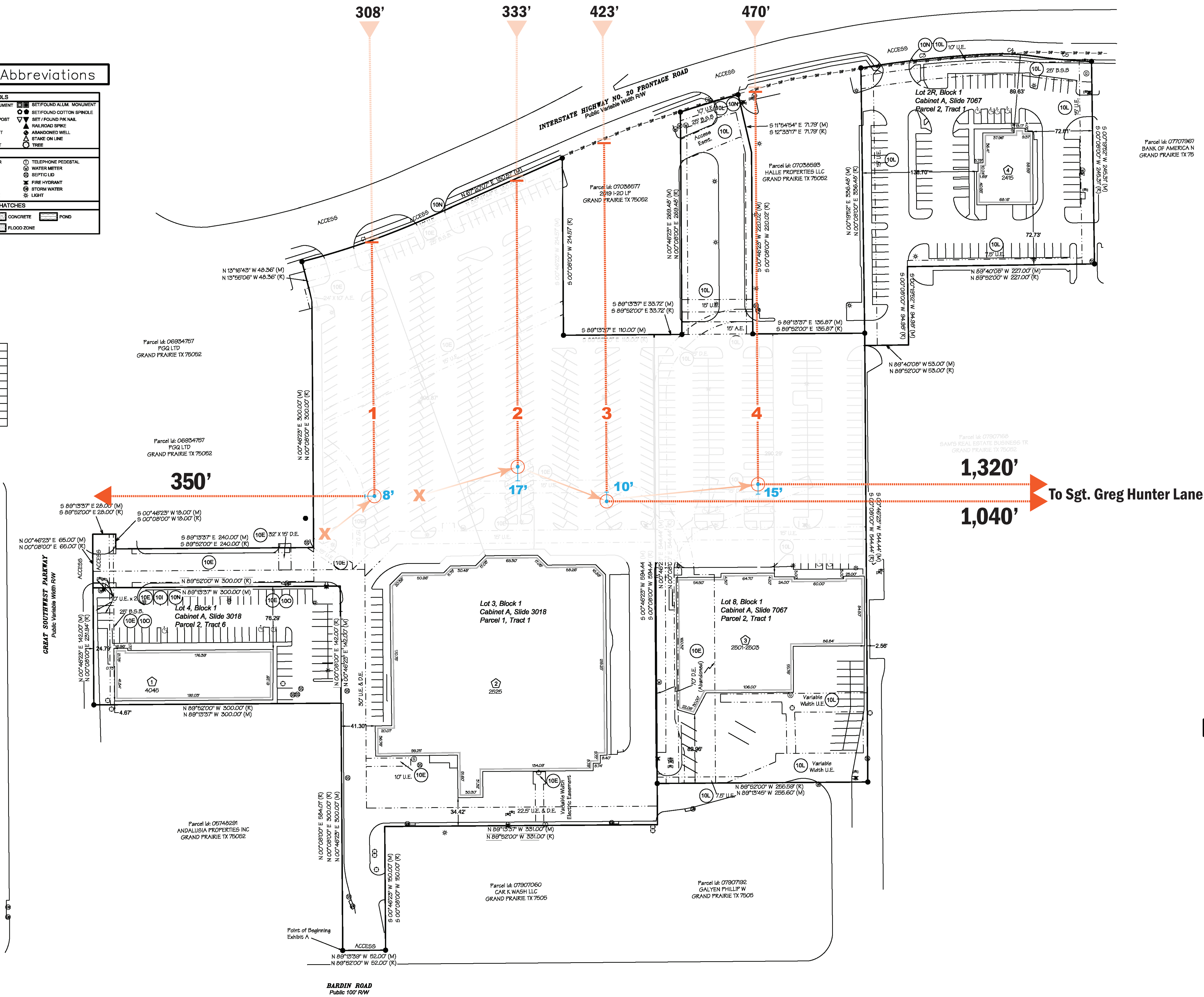
SCALE: 1" = 60'



Legend of Symbols & Abbreviations

SURVEY FEATURES	SURVEYING SYMBOLS
BOUNDARY LINE	SET/FOUND MONUMENT
FORTY LINE	SET/FOUND ALUM. MONUMENT
CENTERLINE OF ROAD	SET/FOUND COTTON SPINDLE
RIGHT-OF-WAY	SET/FOUND P.K. NAIL
FENCE	FOUND STONE
STATE MONUMENT	RAILROAD SPRING
FIELD MEASUREMENT	ABANDONED WELL
RECORDED MEASUREMENT	FOUND PIPE
	COMPUTED POINT
	STAKE ON LINE
	TREE
EASEMENTS	UTILITY SYMBOLS
INGRESS & EGRESS EASEMENT	SANITARY SEWER
BUILDING SET BACK	MANHOLE
UTILITY EASEMENT	POWER POLE
	WATER VALVE
	GAS METER
	ELECTRICAL BOX
UTILITY LINES	SURVEY FEATURE HATCHES
WATER LINE	ASPHALT
OVER-HEAD POWER LINE	CONCRETE
SEWER LINE	GRAVEL
FLOW LINE	POND
GAS LINE	FLOOD ZONE
FIBER OPTIC	
TELEPHONE LINE	

CURVE	RADIUS	ARC LENGTH	CHORD LENGTH	CHORD BEARING
C1	974.89'	159.71'	159.53'	N 72° 07' 42" E
C2	1412.42'	73.21'	73.20'	N 74° 28' 20" E
C3	1412.42'	152.24'	152.17'	N 84° 31' 17" E
C4	300.00'	60.81'	60.71'	S 86° 14' 59" E
C5	600.00'	68.33'	68.29'	S 83° 42' 18" E
C6	300.00'	1.92'	1.92'	S 84° 33' 32" E
C7	600.58'	86.30'	86.19'	S 84° 26' 28" E
C8	514.07'	118.15'	117.89'	S 06° 54' 12" W
C9	89.89'	62.98'	61.72'	S 70° 17' 18" W
C10	109.95'	76.97'	75.41'	S 70° 16' 54" W



Building Information

- Building 1
Height: 25.5'
11810.64 Sq. Feet
- Building 2
Height: 27.5'
65315.24 Sq. Feet
- Building 3
Height: 35.0'
27955.47 Sq. Feet
- Building 4
Height: 27.5'
5729.30 Sq. Feet
- Building 5
Height: 22.0'
13016.34 Sq. Feet
- Building 6
Height: 21.5'
4775.82 Sq. Feet
- Building 7
Height: 29.0'
30661.69 Sq. Feet

Case # USP180201

SCALE: 1" = 60'

0

60

120

180

Legend of Symbols & Abbreviations

SURVEY FEATURES	SURVEYING SYMBOLS
BOUNDARY LINE	SET FOUND MONUMENT
FOOTY LINE	SET FOUND COTTON SPINDLE
CENTRAL LINE OF ROAD	SET / FOUND PICK NAIL
RIGHT-OF-WAY	RAILROAD SPIKE
FENCE	ABANDONED WELL
TREE LINE	STONE ON LINE
FIELD MEASUREMENT	TREE
RECORDED MEASUREMENT	

EASEMENTS	UTILITY SYMBOLS
INGRESS & EGRESS EASEMENT	BANITARY SEWER
BUILDING SET BACK	MANHOLE
UTILITY EASEMENT	POWER POLE
	WATER VALVE
	GAS METER
	ELECTRICAL BOX
	TELEPHONE PEDESTAL
	WATER METER
	SEPTIC I.D.
	FIRE HYDRANT
	STORM WATER
	LIGHT

UTILITY LINES	SURVEY FEATURE HATCHES
WATER LINE	ASPHALT
OVER-HEAD POWER LINE	CONCRETE
SEWER LINE	POND
FLOW LINE	GRAVEL
GAS LINE	FLOOD ZONE
FIBER OPTIC	
TELEPHONE LINE	

CURVE	RADIUS	ARC LENGTH	CHORD LENGTH	CHORD BEARING
C1	574.55'	158.71'	158.55'	N 72° 01' 42" E
C2	1412.40'	73.25'	73.22'	N 74° 28' 25" E
C3	1412.40'	152.24'	152.17'	N 84° 51' 17" E
C4	300.00'	60.51'	60.71'	S 26° 14' 59" E
C5	600.00'	68.35'	68.25'	S 23° 42' 18" E
C6	300.00'	1.92'	1.92'	S 84° 33' 52" E
C7	600.25'	98.35'	98.15'	S 84° 26' 28" E
C8	114.07'	118.15'	117.85'	S 06° 54' 12" W
C9	89.89'	62.98'	61.70'	S 70° 17' 19" W
C10	109.89'	76.87'	75.41'	S 70° 16' 54" W

GREAT SOUTHWEST PARKWAY
Public Variable Width RW

N 00° 46' 22" E 25.00' (M)
S 89° 52' 00" E 25.00' (R)

N 00° 46' 22" E 65.00' (M)
N 00° 46' 22" E 65.00' (R)

N 00° 46' 22" E 142.00' (M)
N 00° 46' 22" E 142.00' (R)

N 00° 46' 22" E 221.00' (M)
N 00° 46' 22" E 221.00' (R)

N 00° 46' 22" E 221.00' (M)
N 00° 46' 22" E 221.00' (R)

N 00° 46' 22" E 221.00' (M)
N 00° 46' 22" E 221.00' (R)

N 00° 46' 22" E 221.00' (M)
N 00° 46' 22" E 221.00' (R)

N 00° 46' 22" E 221.00' (M)
N 00° 46' 22" E 221.00' (R)

N 00° 46' 22" E 221.00' (M)
N 00° 46' 22" E 221.00' (R)

N 00° 46' 22" E 221.00' (M)
N 00° 46' 22" E 221.00' (R)

N 00° 46' 22" E 221.00' (M)
N 00° 46' 22" E 221.00' (R)

N 00° 46' 22" E 221.00' (M)
N 00° 46' 22" E 221.00' (R)

N 00° 46' 22" E 221.00' (M)
N 00° 46' 22" E 221.00' (R)

N 00° 46' 22" E 221.00' (M)
N 00° 46' 22" E 221.00' (R)

N 00° 46' 22" E 221.00' (M)
N 00° 46' 22" E 221.00' (R)

N 00° 46' 22" E 221.00' (M)
N 00° 46' 22" E 221.00' (R)

N 00° 46' 22" E 221.00' (M)
N 00° 46' 22" E 221.00' (R)

N 00° 46' 22" E 221.00' (M)
N 00° 46' 22" E 221.00' (R)

N 00° 46' 22" E 221.00' (M)
N 00° 46' 22" E 221.00' (R)

N 00° 46' 22" E 221.00' (M)
N 00° 46' 22" E 221.00' (R)

N 00° 46' 22" E 221.00' (M)
N 00° 46' 22" E 221.00' (R)

N 00° 46' 22" E 221.00' (M)
N 00° 46' 22" E 221.00' (R)

N 00° 46' 22" E 221.00' (M)
N 00° 46' 22" E 221.00' (R)

N 00° 46' 22" E 221.00' (M)
N 00° 46' 22" E 221.00' (R)

N 00° 46' 22" E 221.00' (M)
N 00° 46' 22" E 221.00' (R)

N 00° 46' 22" E 221.00' (M)
N 00° 46' 22" E 221.00' (R)

Parcel Id: 0730768
SAMS REAL ESTATE BUSINESS TR.
GRAND PRAIRIE TX 75062

1,320'

1,040'

To Sgt. Greg Hunter Lane

Building Information

- Building 1
Height: 25.5'
11810.64 Sq. Feet
- Building 2
Height: 27.5'
65315.24 Sq. Feet
- Building 3
Height: 35.0'
27955.47 Sq. Feet
- Building 4
Height: 27.5'
5729.30 Sq. Feet
- Building 5
Height: 22.0'
13016.34 Sq. Feet
- Building 6
Height: 21.5'
4775.82 Sq. Feet
- Building 7
Height: 29.0'
30661.69 Sq. Feet

Case # USP180201

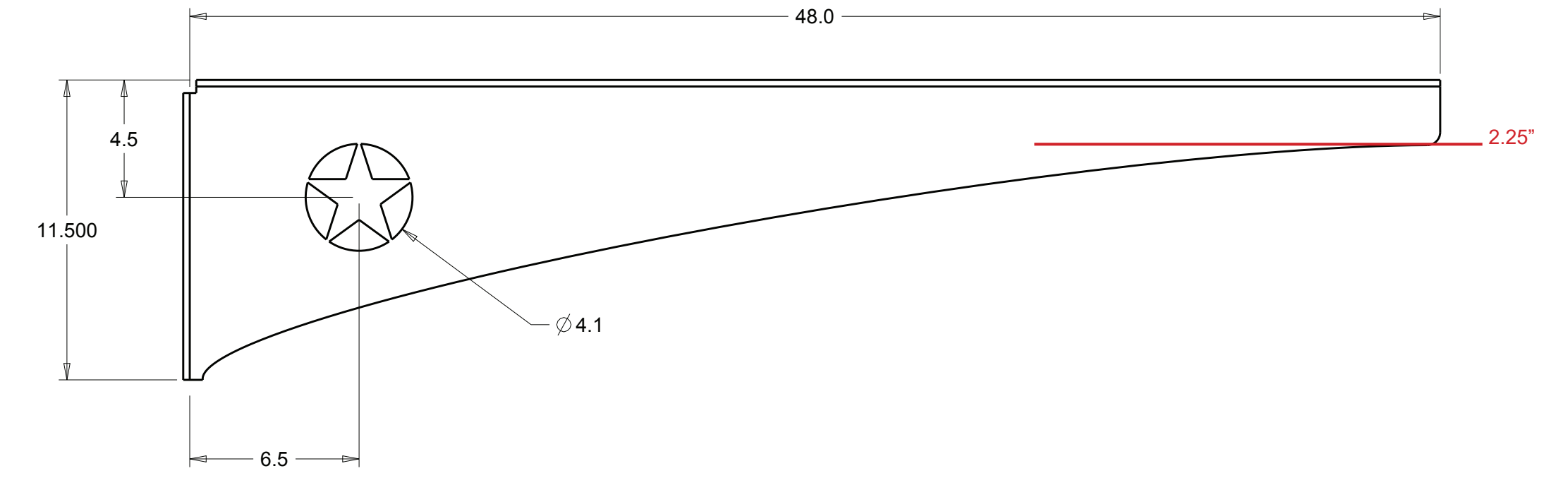
Represented by: Echowood Consulting | Brian Guenzel - brianguenzel@gmail.com | 817 713-7945



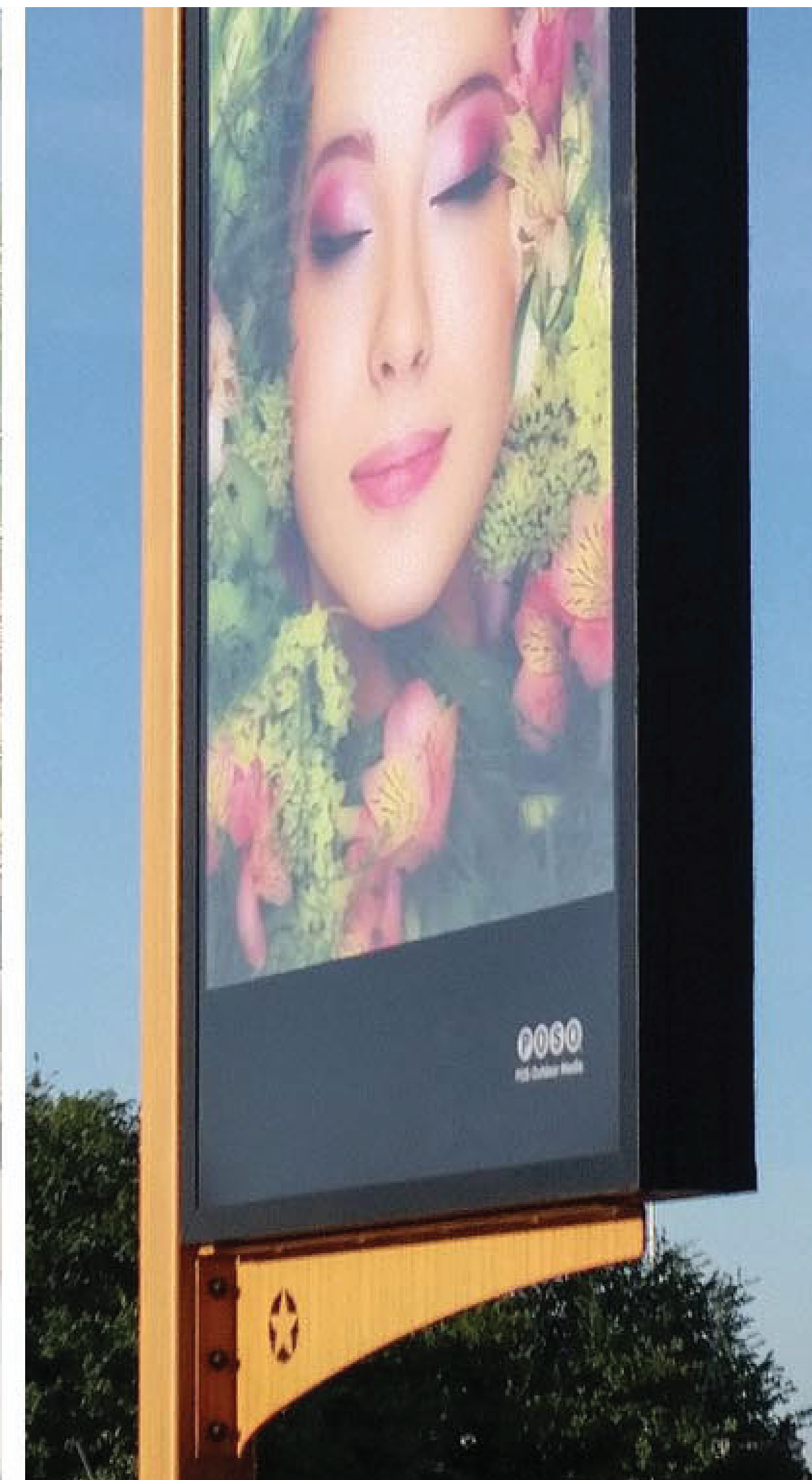
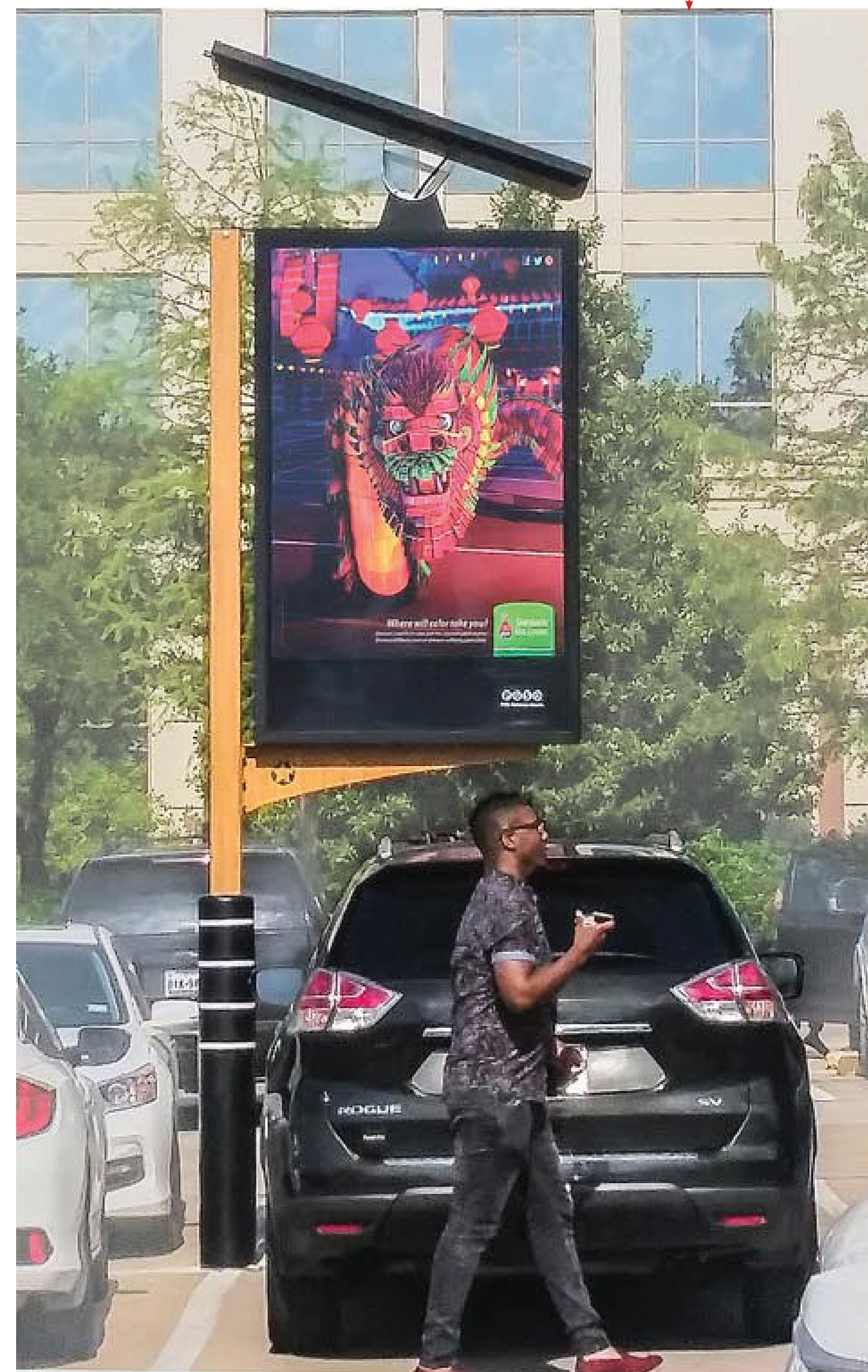
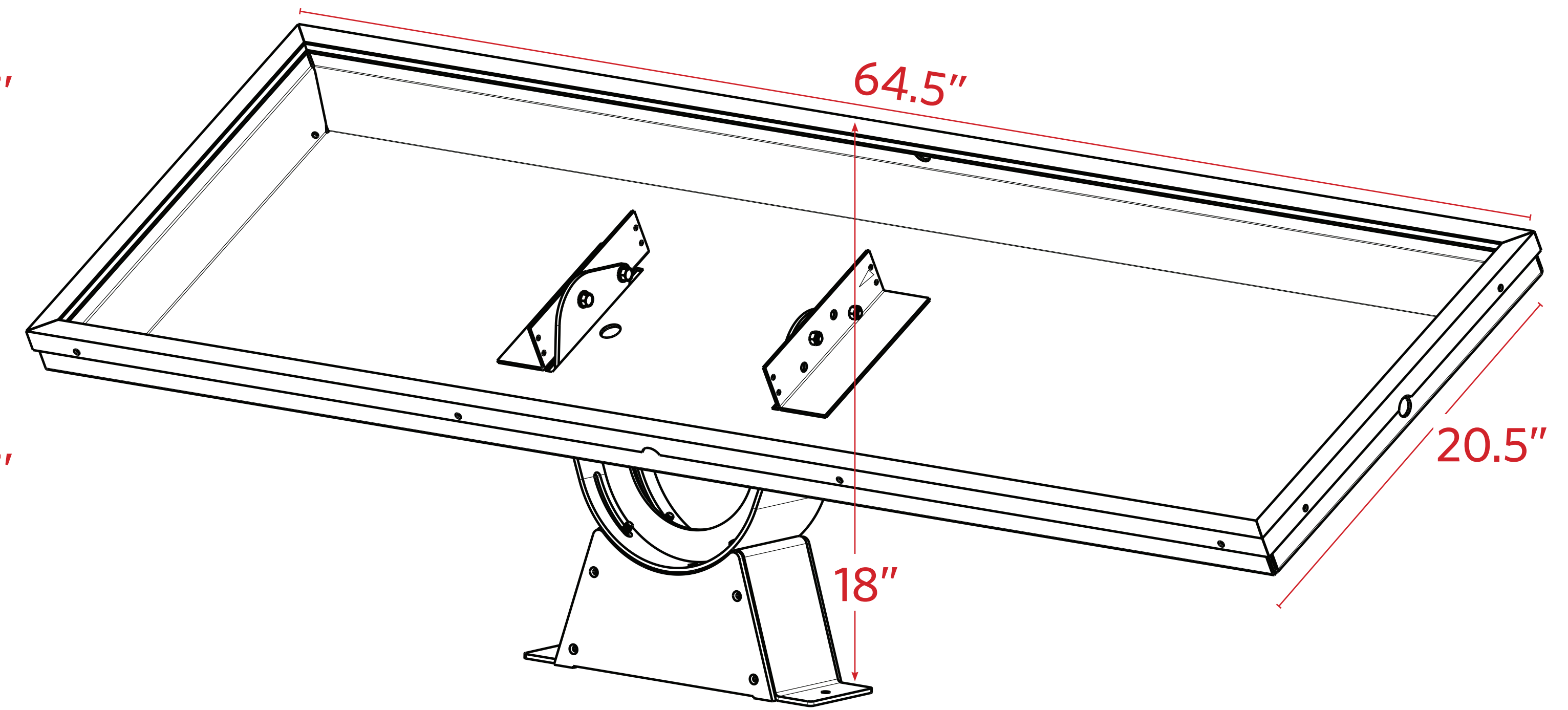
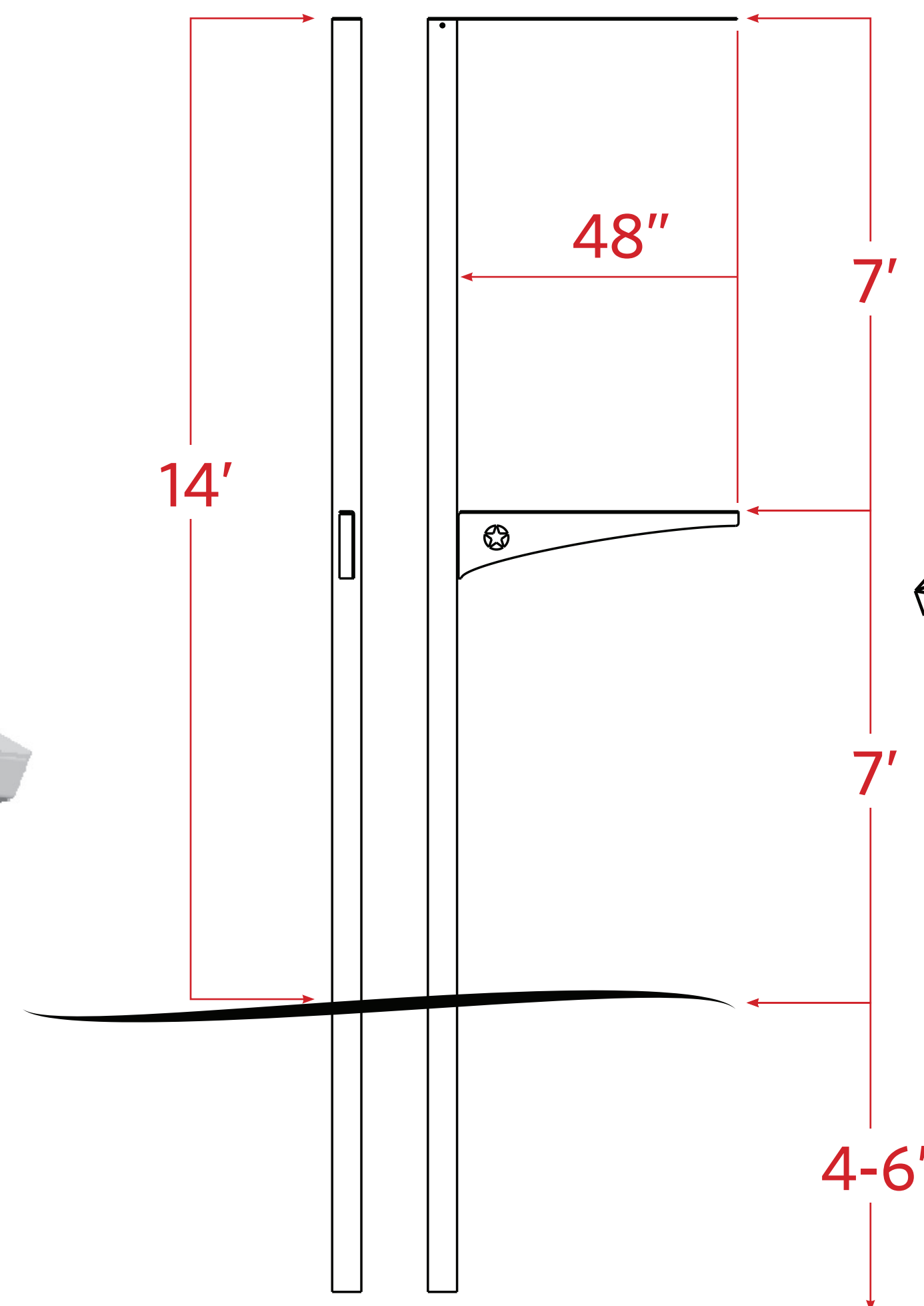
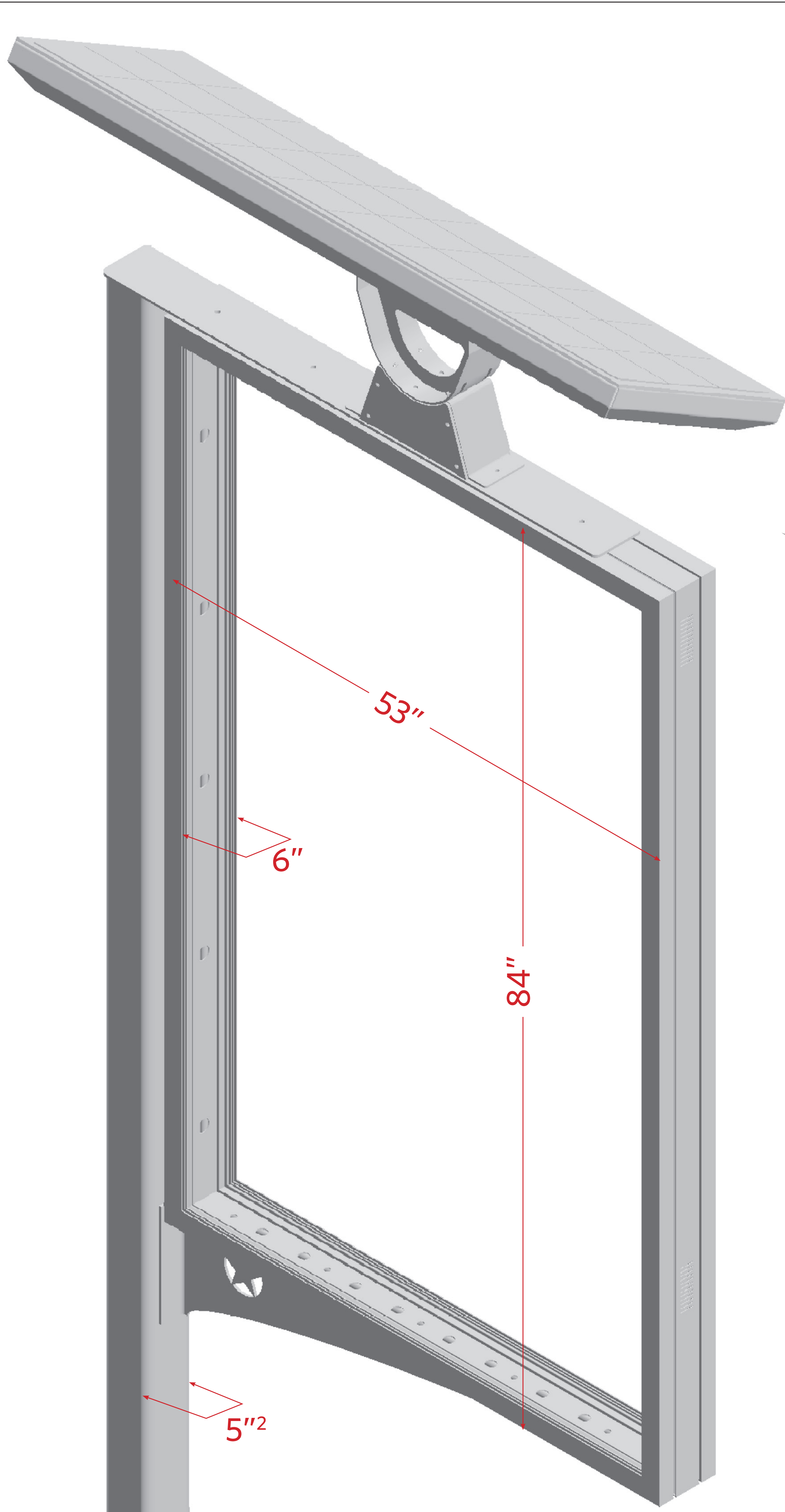
Most trucks and SUV's average 6", (72") at maximum cabin height, The cabinet has 84" ground clearance. The lowest point of the gusset arc is 72.5", and the highest is 80".



This front hood of this over-sized vehicle would fit underneath the lowest part of the gusset which is 6' 2" (74"), and the bottom of the cabinet is 84". Even if this vehicle pulled in all the way, the parking stop would prevent it from hitting the front windshield.



The distance from the Handicap sign to the parking stripe is 6' (72"), and the total height is 78". The cabinet and post together are 60" from post to the outer edge of the cabinet. The cabinet edge would be 12" from the Handicap sign, and 10" above the total Handicap sign height.



Case # USP180201