

Exhibit B - Concept Plan  
Page 1 of 1

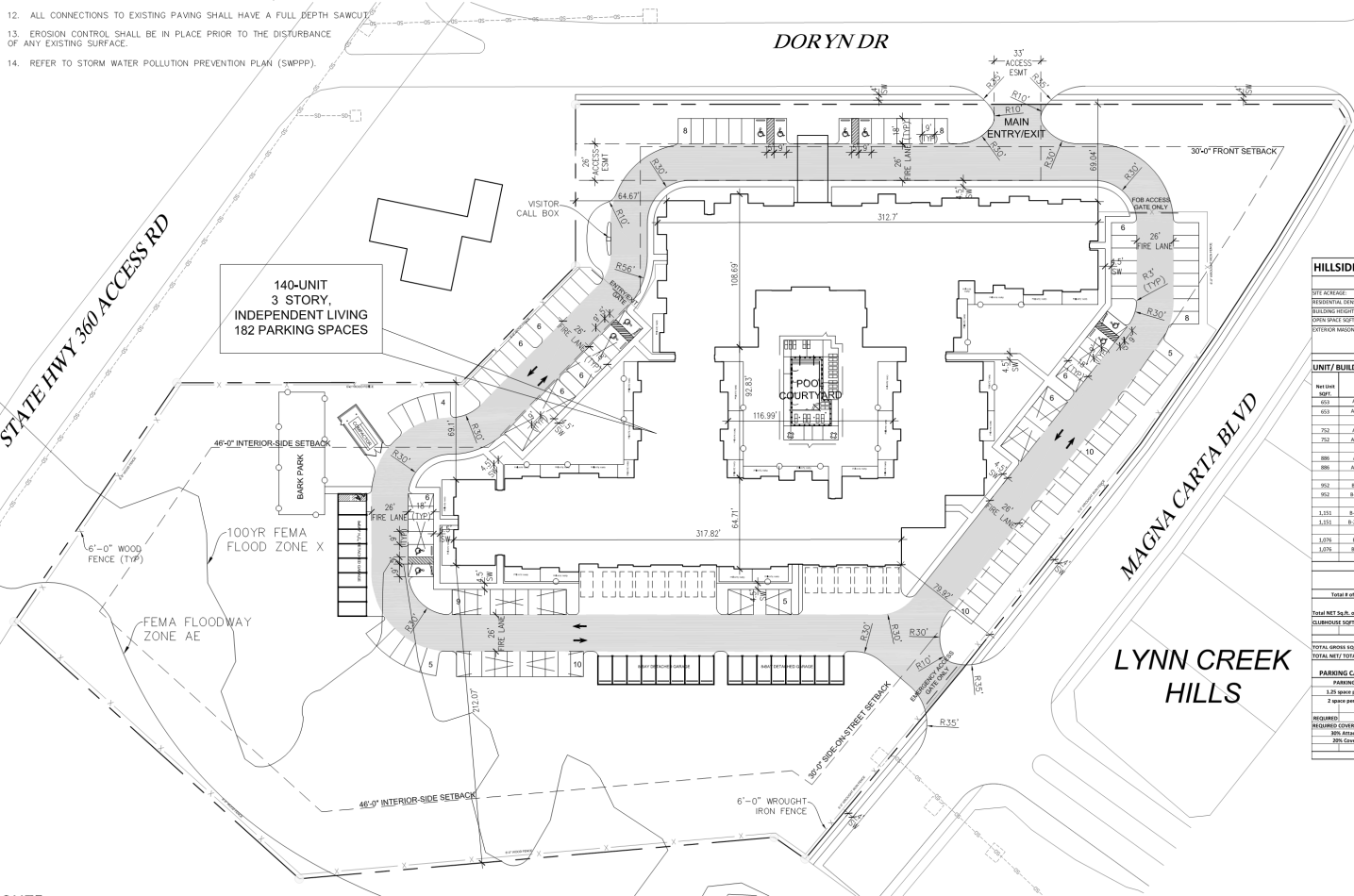
GENERAL NOTES:

1. THE CONTRACTOR SHALL VERIFY THE LOCATION, SIZE, AND MATERIAL OF ALL EXISTING UTILITIES AFFECTED BY CONSTRUCTION PRIOR TO COMMENCEMENT. CONTRACTOR SHALL CONTACT A UTILITY LOCATOR 48 HOURS PRIOR TO CONSTRUCTION.
2. THE CONTRACTOR SHALL BE RESPONSIBLE FOR OBTAINING ALL NECESSARY PERMITS FROM THE CITY.
3. THE CONTRACTOR SHALL BE SOLELY RESPONSIBLE FOR ALL CONSTRUCTION BEING IN ACCORDANCE WITH THE APPLICABLE FEDERAL, STATE, AND LOCAL REQUIREMENTS, REGULATIONS, STATUTES, STANDARDS, AND SPECIFICATIONS.
4. ALL MATERIALS AND WORKMANSHIP SHALL CONFORM TO THE STANDARD SPECIFICATIONS FOR PUBLIC WORKS CONSTRUCTION FOR NORTH CENTRAL TEXAS, LATEST EDITION.
5. CONTRACTOR SHALL PROTECT EXISTING CONTROL MONUMENTATION AND BENCHMARKS. ANY SUCH POINTS WHICH THE CONTRACTOR BELIEVES WILL BE DESTROYED SHALL HAVE OFFSET POINTS ESTABLISHED BY THE CONTRACTOR PRIOR TO CONSTRUCTION, ANY MONUMENTATION DESTROYED BY THE CONTRACTOR SHALL BE REESTABLISHED AT HIS EXPENSE.
6. CONTRACTOR SHALL PROTECT ALL PUBLIC UTILITIES IN THE CONSTRUCTION OF THIS PROJECT.
7. ALL EARTHWORK OPERATIONS, PAVEMENT INSTALLATION, ETC. SHALL CONFORM TO THE RECOMMENDATION OF THE GEOTECHNICAL REPORT.
8. THE CONTRACTOR SHALL VERIFY THE SUITABILITY OF ALL EXISTING AND PROPOSED SITE CONDITIONS, INCLUDING GRADES AND DIMENSIONS BEFORE COMMENCEMENT OF ANY CONSTRUCTION. IN THE EVENT OF ANY CONFLICT, AND PRIOR TO COMMENCEMENT OF ANY CONSTRUCTION, IMMEDIATELY NOTIFY THE ENGINEER.
9. ALL CONCRETE PAVEMENT SHALL BE 3,500 PSI CONCRETE. CONCRETE THICKNESS SHALL BE 6" UNDER ALL FIRELANES AND HEAVY DUTY TRAFFIC AREAS, 6" UNDER MEDIUM DUTY TRAFFIC AREAS AND 5" UNDER ALL PARKING AREAS AS RECOMMENDED BY THE GEOTECHNICAL REPORT. PLEASE REFER TO GEOTECHNICAL REPORT.  
\*\*\*\*\*CITY MAY HAVE ADDITIONAL REQUIREMENTS (ADD AS REQUIRED)\*\*\*\*\*
10. THE FIRE LANE SHALL BE 6" OF REINFORCED CONCRETE ON 6" OF STABILIZED SOIL WITH A MINIMUM OF 30 LBS/SQ YD OF LIME OR CEMENT AS INDICATED IN THE GEOTECH REPORT. AN ALTERNATE SECTION IS ALLOWED AND MAY BE CONSTRUCTED WITH 8" OF REINFORCED CONCRETE ON 95% COMPACTED BASE.  
\*\*\*\*\*CITY MAY HAVE ADDITIONAL REQUIREMENTS (ADD AS REQUIRED)\*\*\*\*\*
11. DIMENSIONS ARE FACE OF CURB OR FACE OF BUILDING, UNLESS OTHERWISE INDICATED.
12. ALL CONNECTIONS TO EXISTING PAVING SHALL HAVE A FULL DEPTH SAWCUT.
13. EROSION CONTROL SHALL BE IN PLACE PRIOR TO THE DISTURBANCE OF ANY EXISTING SURFACE.
14. REFER TO STORM WATER POLLUTION PREVENTION PLAN (SWPPP).

LEGEND

-  FIRELANE
-  EXPANSION JOINT

FEMA NOTE:  
A PORTION OF THIS PROPERTY IS LOCATED IN TARRANT COUNTY IN FLOOD ZONES X, X (SHADED), AE, AND FLOODWAY, AS SCALED FROM THE FEMA FLOOD INSURANCE RATE MAP DATED SEPTEMBER 25, 2009, IS LOCATED IN COMMUNITY NUMBER 485472 IN TARRANT COUNTY, AS SHOWN ON MAP AREA NUMBER 48439C0370K, AND AS SHOWN ON LOMR MAP AREA NUMBER 14-06-1706P, EFFECTIVE APRIL 1, 2015. THE LOCATION OF THE FLOOD ZONE IS APPROXIMATE FOR THE EXACT FLOOD ZONE DESIGNATION, PLEASE CONTACT 1-877-FEMA-MAP.



HILLSIDE SENIOR LIVING AT GRAND PRAIRIE 1/21/2019

SITE ADDRESS		7.34 ACRES	
PROPOSED DEVELOPMENT		N/A (NORTHWEST CORNER)	
BUILDING HEIGHT		3 STORY	
OPEN SPACE			
PROPOSED LANDSCAPE CONTENT		BRICKSTONE, STUCCO, KERNFARM	

UNIT / BUILDING SUMMARY									
UNIT NO.	1st Floor	2nd Floor	3rd Floor	Total # of Units	NET SQFT	% TOTAL			
UNIT TYPE	# OF UNITS	UNIT TYPE	UNIT TYPE	UNIT TYPE					
001	A-1 (1) BLDG BATH	A-1 (1) BLDG BATH	A-1 (1) BLDG BATH	3	11,100	11.1%			
002	A-2 (1) BLDG BATH	A-2 (1) BLDG BATH	A-2 (1) BLDG BATH	3	11,100	11.1%			
750	A-3 (1) BLDG BATH	A-3 (1) BLDG BATH	A-3 (1) BLDG BATH	3	11,100	11.1%			
751	A-4 (1) BLDG BATH	A-4 (1) BLDG BATH	A-4 (1) BLDG BATH	3	11,100	11.1%			
752	A-5 (1) BLDG BATH	A-5 (1) BLDG BATH	A-5 (1) BLDG BATH	3	11,100	11.1%			
753	A-6 (1) BLDG BATH	A-6 (1) BLDG BATH	A-6 (1) BLDG BATH	3	11,100	11.1%			
754	A-7 (1) BLDG BATH	A-7 (1) BLDG BATH	A-7 (1) BLDG BATH	3	11,100	11.1%			
755	A-8 (1) BLDG BATH	A-8 (1) BLDG BATH	A-8 (1) BLDG BATH	3	11,100	11.1%			
756	A-9 (1) BLDG BATH	A-9 (1) BLDG BATH	A-9 (1) BLDG BATH	3	11,100	11.1%			
757	A-10 (1) BLDG BATH	A-10 (1) BLDG BATH	A-10 (1) BLDG BATH	3	11,100	11.1%			
758	A-11 (1) BLDG BATH	A-11 (1) BLDG BATH	A-11 (1) BLDG BATH	3	11,100	11.1%			
759	A-12 (1) BLDG BATH	A-12 (1) BLDG BATH	A-12 (1) BLDG BATH	3	11,100	11.1%			
760	A-13 (1) BLDG BATH	A-13 (1) BLDG BATH	A-13 (1) BLDG BATH	3	11,100	11.1%			
761	A-14 (1) BLDG BATH	A-14 (1) BLDG BATH	A-14 (1) BLDG BATH	3	11,100	11.1%			
762	A-15 (1) BLDG BATH	A-15 (1) BLDG BATH	A-15 (1) BLDG BATH	3	11,100	11.1%			
763	A-16 (1) BLDG BATH	A-16 (1) BLDG BATH	A-16 (1) BLDG BATH	3	11,100	11.1%			
764	A-17 (1) BLDG BATH	A-17 (1) BLDG BATH	A-17 (1) BLDG BATH	3	11,100	11.1%			
765	A-18 (1) BLDG BATH	A-18 (1) BLDG BATH	A-18 (1) BLDG BATH	3	11,100	11.1%			
766	A-19 (1) BLDG BATH	A-19 (1) BLDG BATH	A-19 (1) BLDG BATH	3	11,100	11.1%			
767	A-20 (1) BLDG BATH	A-20 (1) BLDG BATH	A-20 (1) BLDG BATH	3	11,100	11.1%			
768	A-21 (1) BLDG BATH	A-21 (1) BLDG BATH	A-21 (1) BLDG BATH	3	11,100	11.1%			
769	A-22 (1) BLDG BATH	A-22 (1) BLDG BATH	A-22 (1) BLDG BATH	3	11,100	11.1%			
770	A-23 (1) BLDG BATH	A-23 (1) BLDG BATH	A-23 (1) BLDG BATH	3	11,100	11.1%			
771	A-24 (1) BLDG BATH	A-24 (1) BLDG BATH	A-24 (1) BLDG BATH	3	11,100	11.1%			
772	A-25 (1) BLDG BATH	A-25 (1) BLDG BATH	A-25 (1) BLDG BATH	3	11,100	11.1%			
773	A-26 (1) BLDG BATH	A-26 (1) BLDG BATH	A-26 (1) BLDG BATH	3	11,100	11.1%			
774	A-27 (1) BLDG BATH	A-27 (1) BLDG BATH	A-27 (1) BLDG BATH	3	11,100	11.1%			
775	A-28 (1) BLDG BATH	A-28 (1) BLDG BATH	A-28 (1) BLDG BATH	3	11,100	11.1%			
776	A-29 (1) BLDG BATH	A-29 (1) BLDG BATH	A-29 (1) BLDG BATH	3	11,100	11.1%			
777	A-30 (1) BLDG BATH	A-30 (1) BLDG BATH	A-30 (1) BLDG BATH	3	11,100	11.1%			
778	A-31 (1) BLDG BATH	A-31 (1) BLDG BATH	A-31 (1) BLDG BATH	3	11,100	11.1%			
779	A-32 (1) BLDG BATH	A-32 (1) BLDG BATH	A-32 (1) BLDG BATH	3	11,100	11.1%			
780	A-33 (1) BLDG BATH	A-33 (1) BLDG BATH	A-33 (1) BLDG BATH	3	11,100	11.1%			
781	A-34 (1) BLDG BATH	A-34 (1) BLDG BATH	A-34 (1) BLDG BATH	3	11,100	11.1%			
782	A-35 (1) BLDG BATH	A-35 (1) BLDG BATH	A-35 (1) BLDG BATH	3	11,100	11.1%			
783	A-36 (1) BLDG BATH	A-36 (1) BLDG BATH	A-36 (1) BLDG BATH	3	11,100	11.1%			
784	A-37 (1) BLDG BATH	A-37 (1) BLDG BATH	A-37 (1) BLDG BATH	3	11,100	11.1%			
785	A-38 (1) BLDG BATH	A-38 (1) BLDG BATH	A-38 (1) BLDG BATH	3	11,100	11.1%			
786	A-39 (1) BLDG BATH	A-39 (1) BLDG BATH	A-39 (1) BLDG BATH	3	11,100	11.1%			
787	A-40 (1) BLDG BATH	A-40 (1) BLDG BATH	A-40 (1) BLDG BATH	3	11,100	11.1%			
788	A-41 (1) BLDG BATH	A-41 (1) BLDG BATH	A-41 (1) BLDG BATH	3	11,100	11.1%			
789	A-42 (1) BLDG BATH	A-42 (1) BLDG BATH	A-42 (1) BLDG BATH	3	11,100	11.1%			
790	A-43 (1) BLDG BATH	A-43 (1) BLDG BATH	A-43 (1) BLDG BATH	3	11,100	11.1%			
791	A-44 (1) BLDG BATH	A-44 (1) BLDG BATH	A-44 (1) BLDG BATH	3	11,100	11.1%			
792	A-45 (1) BLDG BATH	A-45 (1) BLDG BATH	A-45 (1) BLDG BATH	3	11,100	11.1%			
793	A-46 (1) BLDG BATH	A-46 (1) BLDG BATH	A-46 (1) BLDG BATH	3	11,100	11.1%			
794	A-47 (1) BLDG BATH	A-47 (1) BLDG BATH	A-47 (1) BLDG BATH	3	11,100	11.1%			
795	A-48 (1) BLDG BATH	A-48 (1) BLDG BATH	A-48 (1) BLDG BATH	3	11,100	11.1%			
796	A-49 (1) BLDG BATH	A-49 (1) BLDG BATH	A-49 (1) BLDG BATH	3	11,100	11.1%			
797	A-50 (1) BLDG BATH	A-50 (1) BLDG BATH	A-50 (1) BLDG BATH	3	11,100	11.1%			
798	A-51 (1) BLDG BATH	A-51 (1) BLDG BATH	A-51 (1) BLDG BATH	3	11,100	11.1%			
799	A-52 (1) BLDG BATH	A-52 (1) BLDG BATH	A-52 (1) BLDG BATH	3	11,100	11.1%			
800	A-53 (1) BLDG BATH	A-53 (1) BLDG BATH	A-53 (1) BLDG BATH	3	11,100	11.1%			
801	A-54 (1) BLDG BATH	A-54 (1) BLDG BATH	A-54 (1) BLDG BATH	3	11,100	11.1%			
802	A-55 (1) BLDG BATH	A-55 (1) BLDG BATH	A-55 (1) BLDG BATH	3	11,100	11.1%			
803	A-56 (1) BLDG BATH	A-56 (1) BLDG BATH	A-56 (1) BLDG BATH	3	11,100	11.1%			
804	A-57 (1) BLDG BATH	A-57 (1) BLDG BATH	A-57 (1) BLDG BATH	3	11,100	11.1%			
805	A-58 (1) BLDG BATH	A-58 (1) BLDG BATH	A-58 (1) BLDG BATH	3	11,100	11.1%			
806	A-59 (1) BLDG BATH	A-59 (1) BLDG BATH	A-59 (1) BLDG BATH	3	11,100	11.1%			
807	A-60 (1) BLDG BATH	A-60 (1) BLDG BATH	A-60 (1) BLDG BATH	3	11,100	11.1%			
808	A-61 (1) BLDG BATH	A-61 (1) BLDG BATH	A-61 (1) BLDG BATH	3	11,100	11.1%			
809	A-62 (1) BLDG BATH	A-62 (1) BLDG BATH	A-62 (1) BLDG BATH	3	11,100	11.1%			
810	A-63 (1) BLDG BATH	A-63 (1) BLDG BATH	A-63 (1) BLDG BATH	3	11,100	11.1%			
811	A-64 (1) BLDG BATH	A-64 (1) BLDG BATH	A-64 (1) BLDG BATH	3	11,100	11.1%			
812	A-65 (1) BLDG BATH	A-65 (1) BLDG BATH	A-65 (1) BLDG BATH	3	11,100	11.1%			
813	A-66 (1) BLDG BATH	A-66 (1) BLDG BATH	A-66 (1) BLDG BATH	3	11,100	11.1%			
814	A-67 (1) BLDG BATH	A-67 (1) BLDG BATH	A-67 (1) BLDG BATH	3	11,100	11.1%			
815	A-68 (1) BLDG BATH	A-68 (1) BLDG BATH	A-68 (1) BLDG BATH	3	11,100	11.1%			
816	A-69 (1) BLDG BATH	A-69 (1) BLDG BATH	A-69 (1) BLDG BATH	3	11,100	11.1%			
817	A-70 (1) BLDG BATH	A-70 (1) BLDG BATH	A-70 (1) BLDG BATH	3	11,100	11.1%			
818	A-71 (1) BLDG BATH	A-71 (1) BLDG BATH	A-71 (1) BLDG BATH	3	11,100	11.1%			
819	A-72 (1) BLDG BATH	A-72 (1) BLDG BATH	A-72 (1) BLDG BATH	3	11,100	11.1%			
820	A-73 (1) BLDG BATH	A-73 (1) BLDG BATH	A-73 (1) BLDG BATH	3	11,100	11.1%			
821	A-74 (1) BLDG BATH	A-74 (1) BLDG BATH	A-74 (1) BLDG BATH	3	11,100	11.1%			
822	A-75 (1) BLDG BATH	A-75 (1) BLDG BATH	A-75 (1) BLDG BATH	3	11,100	11.1%			
823	A-76 (1) BLDG BATH	A-76 (1) BLDG BATH	A-76 (1) BLDG BATH	3	11,100	11.1%			
824	A-77 (1) BLDG BATH	A-77 (1) BLDG BATH	A-77 (1) BLDG BATH	3	11,100	11.1%			
825	A-78 (1) BLDG BATH	A-78 (1) BLDG BATH	A-78 (1) BLDG BATH	3	11,100	11.1%			
826	A-79 (1) BLDG BATH	A-79 (1) BLDG BATH	A-79 (1) BLDG BATH	3	11,100	11.1%			
827	A-80 (1) BLDG BATH	A-80 (1) BLDG BATH	A-80 (1) BLDG BATH	3	11,100	11.1%			
828	A-81 (1) BLDG BATH	A-81 (1) BLDG BATH	A-81 (1) BLDG BATH	3	11,100	11.1%			
829	A-82 (1) BLDG BATH	A-82 (1) BLDG BATH	A-82 (1) BLDG BATH	3	11,100	11.1%			
830	A-83 (1) BLDG BATH	A-83 (1) BLDG BATH	A-83 (1) BLDG BATH	3	11,100	11.1%			
831	A-84 (1) BLDG BATH	A-84 (1) BLDG BATH	A-84 (1) BLDG BATH	3	11,100	11.1%			
832	A-85 (1) BLDG BATH	A-85 (1) BLDG BATH	A-85 (1) BLDG BATH	3	11,100	11.1%			
833	A-86 (1) BLDG BATH	A-86 (1) BLDG BATH	A-86 (1) BLDG BATH	3	11,100	11.1%			
834	A-87 (1) BLDG BATH	A-87 (1) BLDG BATH	A-87 (1) BLDG BATH	3	11,100	11.1%			
835	A-88 (1) BLDG BATH	A-88 (1) BLDG BATH	A-88 (1) BLDG BATH	3	11,100	11.1%			
836	A-89 (1) BLDG BATH	A-89 (1) BLDG BATH	A-89 (1) BLDG BATH	3	11,100	11.1%			
837	A-90 (1) BLDG BATH	A-90 (1) BLDG BATH	A-90 (1) BLDG BATH	3	11,100	11.1%			
838	A-91 (1) BLDG BATH	A-91 (1) BLDG BATH	A-91 (1) BLDG BATH	3	11,100	11.1%			
839	A-92 (1) BLDG BATH	A-92 (1) BLDG BATH	A-92 (1) BLDG BATH	3	11,100	11.1%			
840	A-93 (1) BLDG BATH	A-93 (1) BLDG BATH	A-93 (1) BLDG BATH	3	11,100	11.1%			
841	A-94 (1) BLDG BATH	A-94 (1) BLDG BATH	A-94 (1) BLDG BATH	3	11,100	11.1%			
842	A-95 (1) BLDG BATH	A-95 (1) BLDG BATH	A-95 (1) BLDG BATH	3	11,100	11.1%			
843	A-96 (1) BLDG BATH	A-96 (1) BLDG BATH	A-96 (1) BLDG BATH	3	11,100	11.1%			
844	A-97 (1) BLDG BATH	A-97 (1) BLDG BATH	A-97 (1) BLDG BATH	3	11,100	11.1%			
845	A-98 (1) BLDG BATH	A-98 (1) BLDG BATH	A-98 (1) BLDG BATH	3	11,100	11.1%			
846	A-99 (1) BLDG BATH	A-99 (1) BLDG BATH	A-99 (1) BLDG BATH	3	11,100	11.1%			
847	A-100 (1) BLDG BATH	A-100 (1) BLDG BATH	A-100 (1) BLDG BATH	3	11,100	11.1%			
848	A-101 (1) BLDG BATH	A-101 (1) BLDG BATH	A-101 (1) BLDG BATH	3	11,100	11.1%			
849	A-102 (1) BLDG BATH	A-102 (1) BLDG BATH	A-102 (1) BLDG BATH	3	11,100	11.1%			
850	A-103 (1) BLDG BATH	A-103 (1) BLDG BATH	A-103 (1) BLDG BATH	3	11,100	11.1%			
851	A-104 (1) BLDG BATH	A-104 (1) BLDG BATH	A-104 (1) BLDG BATH	3	11,100	11.1%			
852	A-105 (1) BLDG BATH	A-105 (1) BLDG BATH	A-105 (1) BLDG BATH	3	11,100	11.1%			
853	A-106 (1) BLDG BATH	A-106 (1) BLDG BATH	A-106 (1) BLDG BATH	3	11,100	11.1%			
854	A-107 (1) BLDG BATH	A-107 (1) BLDG BATH	A-107 (1) BLDG BATH	3	11,100	11.1%			
855	A-108 (1) BLDG BATH	A-108 (1) BLDG BATH	A-108 (1) BLDG BATH	3	11,100	11.1%			
856	A-109 (1) BLDG BATH	A-109 (1) BLDG BATH	A-109 (1) BLDG BATH	3	11,100	11.1%			
857	A-110 (1) BLDG BATH	A-110 (1) BLDG BATH	A-110 (1) BLDG BATH	3	11,100	11.1%			
858	A-111 (1) BLDG BATH	A-111 (1) BLDG BATH	A-111 (1) BLDG BATH	3	11,100	11.1%			
859	A-112 (1) BLDG BATH	A-112 (1) BLDG BATH	A-112 (1) BLDG BATH	3	11,100	11.1%			
860	A-113 (1) BLDG BATH	A-113 (1) BLDG BATH	A-113 (1) BLDG BATH	3	11,100	11.1%			
861	A-114 (1) BLDG BATH	A-114 (1) BLDG BATH	A-114 (1) BLDG BATH	3	11,100	11.1%			
862	A-115 (1) BLDG BATH	A-115 (1) BLDG BATH	A-115 (1) BLDG BATH	3	11,100	11.1%			
863	A-116 (1) BLDG BATH	A-116 (1) BLDG BATH	A-116 (1) BLDG BATH	3	11,100	11.1%			
864	A-117 (1) BLDG BATH	A-117 (1) BLDG BATH	A-117 (1) BLDG BATH	3	11,100	11.1%			
865	A-118 (1) BLDG BATH	A-118 (1) BLDG BATH	A-118 (1) BLDG BATH	3	11,100	11.1%			
866	A-119 (1) BLDG BATH	A-119 (1) BLDG BATH	A-119 (1) BLDG BATH	3	11,100	11.1%			
867	A-120 (1) BLDG BATH	A-120 (1) BLDG BATH	A-120 (1) BLDG BATH	3	11,100	11.1%			
868	A-121 (1) BLDG BATH	A-121 (1) BLDG BATH	A-121 (1) BLDG BATH	3	11,100	11.1%			
869	A-122 (1) BLDG BATH	A-122 (1) BLDG BATH	A-122 (1) BLDG BATH	3	11,100	11.1%			
870	A-123 (1) BLDG BATH	A-123 (1) BLDG BATH	A-123 (1) BLDG BATH	3	11,100	11.1%			
871	A-124 (1) BLDG BATH	A-124 (1) BLDG BATH	A-124 (1) BLDG BATH	3	11,100	11.1%			
872	A-125 (1) BLDG BATH	A-125 (1) BLDG BATH	A-125 (1) BLDG BATH	3	11,100	11.1%			
873	A-126 (1) BLDG BATH	A-126 (1) BLDG BATH	A-126 (1) BLDG BATH	3	11,100	11.1%			
874	A-127 (1) BLDG BATH	A-127 (1) BLDG BATH	A-127 (1) BLDG BATH	3	11,100	11.1%			
875	A-128 (1) BLDG BATH	A-128 (1) BLDG BATH	A-128 (1) BLDG BATH	3	11,100	11.1%			
876	A-129 (1) BLDG BATH	A-129 (1) BLDG BATH	A-129 (1) BLDG BATH	3	11,100	11.1%			
877	A-130 (1) BLDG BATH	A-130 (1) BLDG BATH	A-130 (1) BLDG BATH	3	11,100	11.1%			
878	A-131 (1) BLDG BATH	A-131 (1) BLDG BATH	A-131 (1) BLDG BATH	3	11,100	11.1%			
879	A-132 (1) BLDG BATH	A-132 (1) BLDG BATH	A-132 (1) BLDG BATH	3	11,100	11.1%			
880	A-133 (1) BLDG BATH	A-133 (1) BLDG BATH	A-133 (1) BLDG BATH	3	11,100	11.1%			
881	A-134 (1) BLDG BATH	A-134 (1) BLDG BATH	A-134 (1) BLDG BATH	3	11,100	11.1%			
882	A-135 (1) BLDG BATH	A-135 (1) BLDG BATH	A-135 (1) BLDG BATH	3	11,100	11.1%			
883	A-136 (1) BLDG BATH	A-136 (1) BLDG BATH	A-136 (1) BLDG BATH	3	11,100	11.1%			
884	A-137 (1) BLDG BATH	A-137 (1) BLDG BATH	A-137 (1) BLDG BATH	3	11,100	11.1%			
885	A-138 (1) BLDG BATH	A-138 (1) BLDG BATH	A-138 (1) BLDG BATH	3	11,100	11.1%			
886	A-139 (1) BLDG BATH	A-139 (1) BLDG BATH	A-139 (1) BLDG BATH	3	11,100	11.1%			
887	A-140 (1) BLDG BATH	A-140 (1) BLDG BATH	A-140 (1) BLDG BATH	3	11,100	11.1%			
888	A-141 (1) BLDG BATH	A-141 (1) BLDG BATH	A-141 (1) BLDG BATH	3	11,100	11.1%			
889	A-142 (1) BLDG BATH	A-142 (							