

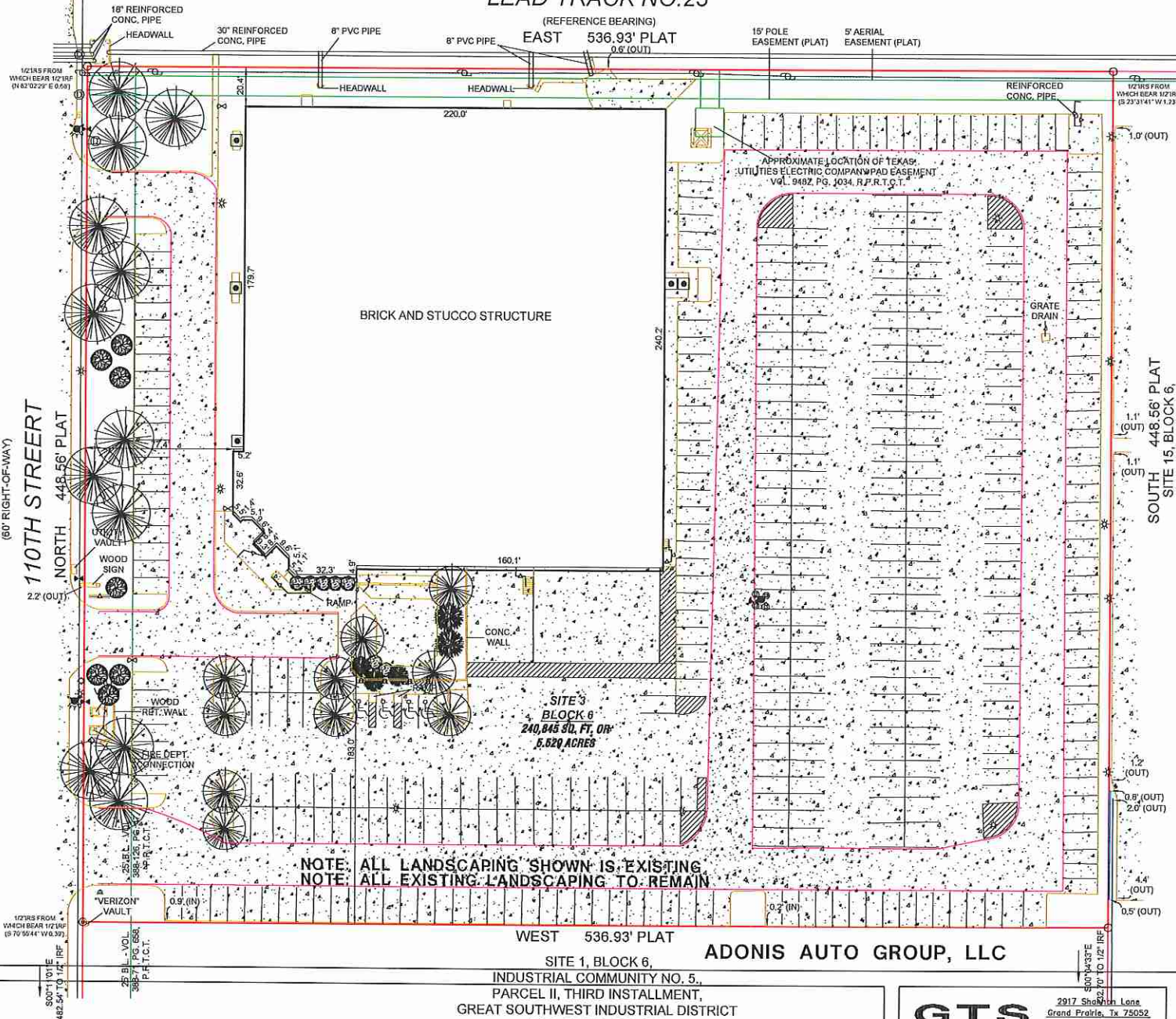
EXHIBIT C

Landscape Plan

(53' RIGHT-OF-WAY)
LEAD TRACK NO.23

(REFERENCE BEARING)
EAST 536.93' PLAT
0.6' (OUT)

15' POLE
EASEMENT (PLAT) 5' AERIAL
EASEMENT (PLAT)



MATURE LIVE OAK TREE -
12" TRUNK, 30" DIAMETER
CANOPY - TYPICAL



12' TALL, MATURE CREPE
MYRTLE - TYPICAL

NOTE: ALL LANDSCAPING SHOWN IS EXISTING

SOUTH 448.56' PLAT
SITE 15, BLOCK 6,
INDUSTRIAL COMMUNITY NO. 5,
GREAT SOUTHWEST INDUSTRIAL DISTRICT
VOL. 388-47, PG. 400,
P.R.T.C.T.

1908 110TH
GRAND PRAIRIE, TX

BUILDING SUMMARY

| | |
|------------------|------------------|
| OFFICE | 7,935 SF |
| MEZZANINE OFFICE | 17,814 SF |
| WAREHOUSE | 42,565 SF |
| TOTAL | 68,314 SF |



A LANDSCAPING PLAN
SCALE: 1" = 20'

SU181003/S181004
ZONED LIGHT INDUSTRIAL

MERCER COMPANY
3030 LBJ FREEWAY, SUITE #1600
DALLAS, TEXAS 75234
O (214) 630-7010 C (469) 360-3918

WEST 536.93' PLAT
SITE 1, BLOCK 6,
INDUSTRIAL COMMUNITY NO. 5,
PARCEL II, THIRD INSTALLMENT,
GREAT SOUTHWEST INDUSTRIAL DISTRICT
VOL. 388-71, PG. 658,
P.R.T.C.T.

ADONIS AUTO GROUP, LLC

GTS
PLANNERS

2917 Shoshone Lane
Grand Prairie, TX 75052
(972) 602-9041
gordonstone@gtsplanners.com

| | | | |
|-------------------|----------------------|-------|----------------------------|
| Date: 09/06/18 | Revised: 09/19/18 | | Sheet Number S-3 |
| 18-250 | | STONE | |

SU181003/S181004